

# Welsh

# Education

Two languages:

twice the opportunity



Find us on

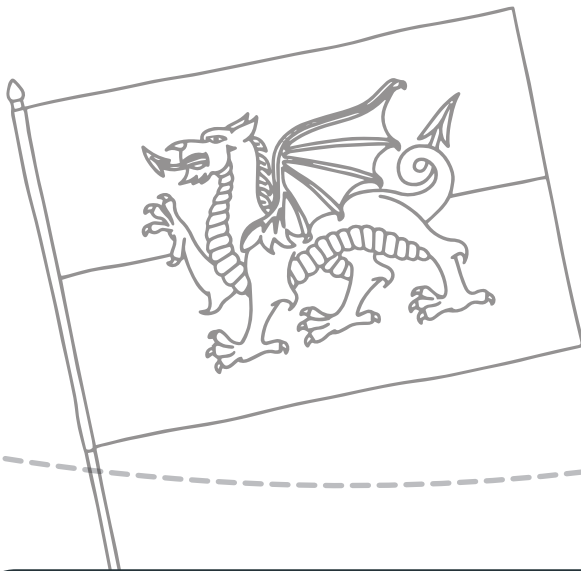


# Why choose **Welsh**?

Whichever language you speak at home, Welsh-medium education can give your child additional opportunities, experiences and skills.

Choosing a Welsh-medium education provides your child with the opportunity to extend their bilingual skills creatively and academically.

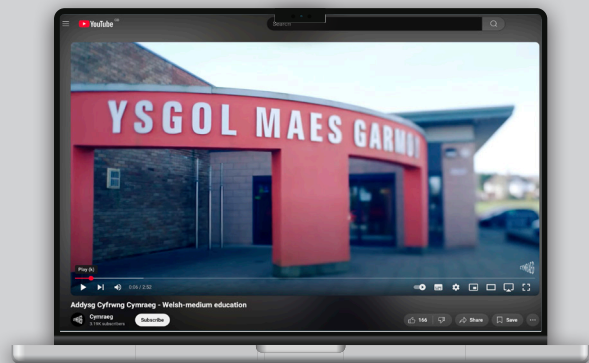
There are wider benefits to a bilingual education including a positive effect on a child's cognitive abilities, and these benefits last a lifetime.



Watch video here:



scan the QR code



**Cymraeg  
belongs to  
us all.**

Jeremy Miles AM,  
Minister for Education and the Welsh Language.  
February 2022.

## The benefits of being bilingual...

- ✓ Bilingual children are on average 6.5% more efficient in their thinking skills than monolingual children
- ✓ Bilingual people's average earnings are 8-10% higher
- ✓ Speaking more than one language helps reduce the risk of dementia in later life
- ✓ Bilingualism increases opportunities and choices

Watch video here:



scan the QR code







### **Educational advantages**

Bilingual children are on average 6.5% more efficient in their thinking skills compared with children who only use one language.

Learning two languages can have even more benefits for children's development.

### **Career advantages**

Speaking two languages offers more employment opportunities-having an additional skill adds value and a competitive edge.

Changes in recent legislation means more employers will need a bilingual workforce.

### **Cognitive advantages**

People who speak two languages are more flexible and creative-they have more than one word for objects and concepts.

Bilinguals are better at analysing data and multitasking, doing better in IQ tests and having higher cognitive skills.

### **Social & Communication advantages**

Being bilingual creates a closer relationship with the history, heritage, and traditions of Wales. These cultural benefits make for a strong identity which increases the sense of belonging and self-worth.

Bilingual people are more sensitive when communicating and are more aware of the needs of listeners especially when switching from one language to another.





Cymraeg



## Opportunities for Welsh

### **1. Choose Welsh Education from the start**

Pre-school: Cylch Ti a Fi. Moving into a Welsh-medium primary school setting for Nursery, with Cylch Meithrin providing additional childcare, and continuing in the Welsh-medium primary school in Reception onwards.

There are 5 Welsh-medium Primary Schools across 6 sites in Flintshire to choose from.

The majority of our pupils come from non-Welsh speaking backgrounds – you do not need to speak Welsh for your children to succeed!

### **2. Move from an English-medium primary school to a Welsh-medium primary school**

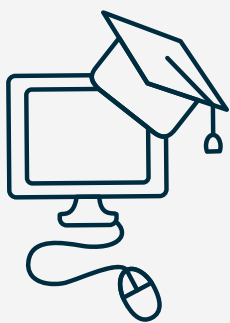
You can choose to move into Welsh-medium education at any time. Learners are well supported through a dedicated transition language programme.

### **3. Move from an English-medium primary school to a Welsh-medium secondary school: Ysgol Maes Garmon**

The school offers a highly effective immersion provision for pupils transferring from English-medium primary schools in Year 7. This programme ensures pupils successfully acquire the Welsh language and is supported by Flintshire.

# Choosing Welsh-medium Education from the start

Attending Cylch Ti a Fi and progressing to Cylch Meithrin is a great opportunity to start using Welsh. The Cylch activities support parents to use some Welsh at home and gives non-Welsh speaking families the opportunity to use the language for the first time with their children before they move into Nursery provision at a Welsh-medium primary school.



To find your nearest Cylch, visit the Mudiad Meithrin website: [meithrin.cymru](http://meithrin.cymru)





# Move from an English-medium primary school to a Welsh-medium primary school

Our Welsh-medium primary schools welcome your child at any age and offer a dedicated transition programme to support your decision to move your child to a Welsh-medium education.

The majority of pupils who attend these schools come from non-Welsh speaking homes. Our aim is to develop the children's ability to embrace and use two languages effectively by the time they leave primary school.

With this in mind, schools focus on Welsh during the early years. Welsh is the official language of all these schools, but the aim is to foster bilingualism throughout Junior years.

There are 5 Welsh-medium Primary schools in Flintshire, and all offer a cohesive and comprehensive programme for newcomers to the language.

These schools are:



**Ysgol Croes Atti,**  
Fflint & Shotton  
sites



**Ysgol Glanrafon,**  
Mold



**Ysgol Gwenffrwd,**  
Holywell



**Ysgol Terrig,**  
Treuddyn



**Ysgol Mornant,**  
Picton





# Newcomers to Cymraeg

**Children who start in year 3 or above**, who are new to Welsh, are supported through a dedicated and cohesive language immersion programme. Children are part of a small learning group taught by specialists in teaching Welsh, who are supported by Flintshire's Welsh Advisory Teachers. Children also have opportunities to practise the language they have been learning within their classroom environment.



“ I was born in Wales to English parents, and attended Welsh-medium primary education from three years, and Cylch Meithrin before that. Welsh was a huge part of my childhood, and I have very happy memories of being part of the Urdd Eisteddfods and clubs. I moved to bilingual provision aged 11 but continued to use Welsh socially and at work.

I see the bilingual education I had as a huge advantage, and has helped me by giving me more options, opportunities and choice. I hope my children will be even more fluent than I am, and I started from birth trying to pass the language on.

My husband's family is Scottish, and he appreciates the opportunity our children have of being educated through Welsh, in such a way that Gaelic isn't taught. It is important to him that the children are immersed in the Welsh culture and language and believes being confident in both languages will help them in their future careers.

Our children are happy to talk, read and write in both languages and if they know a word I don't know they are always happy (in fact delighted!) to translate for me and teach us something new.

”



“

My husband and I are not Welsh speakers however we moved to Wales just at the time when our eldest child was due to start school. We initially did not intend to send her to a Welsh-medium school, but we did decide to look round as it was local to us. We were really impressed and received such a warm welcome that it was an easy decision to send her there. We were reassured by the headteacher that it was not a problem that we didn't speak Welsh.

Our children have all enjoyed learning in Welsh and have never known anything different, so they take it in their stride. It's amazing to watch them soak in a new language without really thinking or worrying about it. It's great to think that this skill might also help them learn other languages in the future.

Our daughter has taken part in the Urdd Eisteddfod and has enjoyed it so much. Competing alongside those from Welsh speaking families and holding her own is a testament to the strength of the Welsh-medium education system.

I think extended family were a bit hesitant about Welsh-medium education initially but soon came around when they saw how well the children took to it. There is a lovely sense of community at the school, and they enjoy all aspects of Welsh culture that they are exposed to.

On a practical level we have always had all communication in English as well as Welsh so never a problem knowing what is going on. The staff have always been friendly and quick to help with any questions. My experience is that Welsh-medium education enriches the whole education journey, I always recommend it without hesitation.

”

# Move from an English-medium primary school to a Welsh-medium secondary school: Ysgol Maes Garmon

Pupils who choose Welsh-medium education from an English-medium primary school have an opportunity to attend an introductory programme at the end of Year 6 to prepare them for joining the Immersion programme at the start of Year 7.

Newcomers to the language in Year 7 follow the successful Trochi programme and are taught together in a small and very supportive class. This enables a greater focus on immersive language development in all subjects.

Over two years, pupils increasingly integrate with first language pupils, allowing them to develop and use their Welsh language skills in a greater variety of contexts, with the aim of being fully integrated by Year 9.







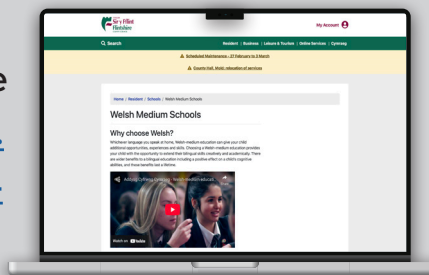
## Harvey

Harvey went to Hawarden Village Church Primary School. When we were looking at high schools for my son, the obvious choice was the local high school within walking distance. However, having started on my own Welsh language journey, I suggested Ysgol Maes Garmon - I'd only ever heard positive things about YMG, and I really liked the thought of my son speaking another language fluently. Also, I really feel that

speaking Welsh will help him in the future if he chooses to stay in Wales to live and work.

The open evening was a success: a real family feel; smiley students and friendly teachers (they were certainly patient with me when I was trying to communicate in Welsh!) So far, my son is enjoying his experience at YMG: he has made friends and is happy. I am blown away by how much Welsh he knows already - in such a short amount of time. He is able to recite language patterns confidently and has picked it up far quicker than I did when learning Welsh! I'm really looking forward to seeing his progress this year.

To find out more about the Trochi immersion scheme at YMG, visit the FCC website: <https://www.flintshire.gov.uk/en/Resident/Schools/Welsh-Medium-Schools.aspx>



or scan the QR code

## Pia

Pia chose Ysgol Maes Garmon because: 'I believe that learning Welsh can open up many opportunities. Ysgol Maes Garmon was a suitable school for me, with the small size and family feeling, which is more present in immersion.'

How was the change? 'It is an easier transition into secondary school because everyone makes new friends quickly in the small group. Going forward we transition into the rest of the year. This was comfortable, I was able to get to know people and make new friends more gradually.'

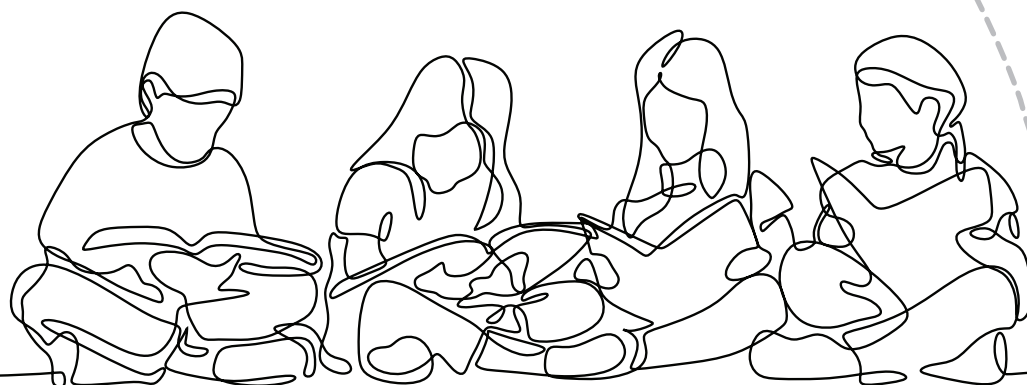
What would be your message to someone who is considering the Immersion? 'You would be very happy that you took the leap to do something completely new, to have a unique experience and learn a lot. It is the most rewarding experience I have had, and it has allowed me to confidently complete my exams in the Welsh language.'



And the School's website here: [www.ysgolmaesgarmon.com/immersion-scheme/](http://www.ysgolmaesgarmon.com/immersion-scheme/)



or scan the QR code



# What about after school?

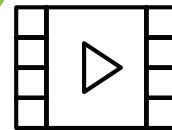
Looking into the future as a Welsh speaker - moving into further education or the world of training and work.

There is now an increasing choice of subjects, modules and apprenticeships available in Welsh to enable students to continue studying through Welsh. This is key in order to contribute to a skilled, bilingual workforce for the future.

Watch video here:



scan the QR code



**Menter iaith:**

**A series of short videos**

(all under 1 minute)

highlighting the advantages  
of a bilingual education.

## Supporting your Welsh in the Community

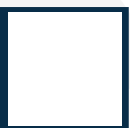
There are several organisations and societies that support the use of Welsh and arrange bilingual activities and events for young people and families:



Menter iaith Fflint a  
Wrecsam



Urdd Fflint a  
Wrecsam



Mudiad Meithrin



Cymraeg i Blant



RHAG





# Frequently asked questions:

## How can I help my child with homework if I don't speak Welsh?

Welsh-medium schools provide homework instructions in Welsh and English so there will be no problem understanding what your child is being asked to do. All schools provide educational advice, HWB provides access to a range of digital learning tools and resources.

## The children will be confused, and their English will suffer

On average, bilingual children achieve higher English language results. A child's knowledge and understanding are also reinforced when they explain to parents in English what they are doing.

## How can my child get to our local Welsh-medium School?

We're here to help. The LA provides free\* transport for children of compulsory school age (i.e. 5-16yrs) as follows:

- where a child receiving primary education lives over two miles from the nearest appropriate school,
- where a child receiving secondary education lives over three miles from the nearest appropriate school,
- where a child whose parents are in receipt of Income Support or Working Tax Credit resides more than 2.5 miles from the nearest appropriate school.

*(\*to the nearest Welsh-medium school under the criteria identified above)*

## My child has Additional Learning Needs, can we still access Welsh language education?

Yes, Welsh language provision for ALN is available. The Welsh language resource class is based at Ysgol Glanrafon, Mold.

Secondary provision and further ALN information can be found on Flintshire's website (details on page 16.)





Cymraeg



# Welsh Government's Million Welsh Speakers and Flintshire's Welsh in Education Strategy Plan

The Welsh Government aims to increase the number of Welsh speakers to a million by 2050 and boost the number of people who use the language every day.

The Welsh Education Strategic Plan in Flintshire is a long-term strategic tool for us to contribute our part in the country-wide goal of a million Welsh speakers by 2050.

We aspire for people of all ages to improve their Welsh language skills and have the ability to use these confidently within their families, in their places of learning, in their workplaces and in their communities.

# Welsh Education

## Two languages: twice the opportunity



Your child can be fully immersed in the Welsh language from their early years



Your child can join any Welsh-medium school in the County during primary education and will be supported



Your child will be supported if they move from an English-medium primary into Welsh secondary education through the Flintshire Immersion Scheme at Ysgol Maes Garmon

### Contacts for Admissions



01352 704068/704073



admissions@flintshire.gov.uk



www.flintshire.gov.uk



*Information correct Spring 2025.*

*Subject to changes with regular reviews of provision.*