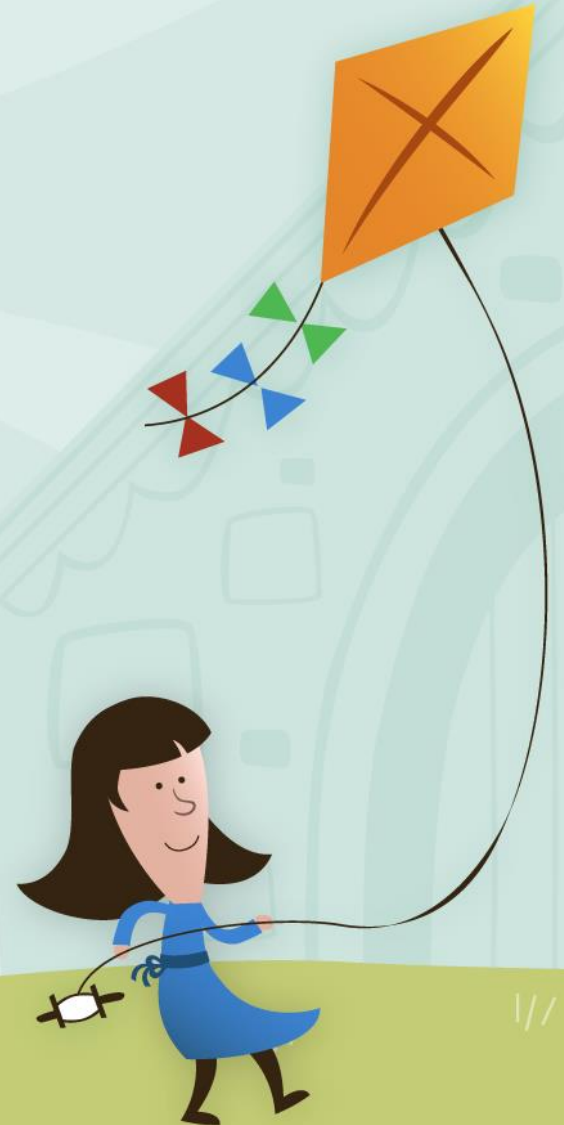


# Review of Saltney Community Primary Schools



# Who we are

Flintshire County Council are responsible for all the schools in our area.

We are part of a team that work for the Council to support schools.



# Why are we asking for your views again?

- We talked to people about these plans before, but we had to pause the process earlier this year.
- This was because there was a legal question raised that needed to be carefully checked.
- While this was being looked at, we ran out of time to follow the official rules for consultations.
- We now need to start the consultation again so that:
  - Everything follows the latest rules
  - Everyone has a fair chance to share their views
- We still think these plans could be a good way to improve schools, and we want to hear what you think before any decisions are made.



# The United Nations Convention on the Rights of the Child (UNCRC)

‘Children have the right to say what they think should happen, when adults are making decisions that affect them, and to have their opinions taken into account’.

## Article 12: The United Nations Convention on the Rights of the Child (UNCRC)

For information about the Children and Young People’s National Participation Standards visit:

[http://www.youngwales.wales/images/ParticipationStandards\\_Poster\\_9.pdf](http://www.youngwales.wales/images/ParticipationStandards_Poster_9.pdf)



# Our Aims

- To give all children the best chance to learn in excellent schools in our area.
- To have safe and strong school buildings.
- To make sure money for children and schools in our area is spent in a fair way.
- To give everyone the opportunity to have their voice heard and listened to, in decisions that affect them.



# Primary Schools Involved

## Two Primary Schools

- Saltney Ferry Community Primary School
- Saltney Wood Memorial Community Primary School



# Changes

It is not always possible for every school to stay as they are and sometimes this means the Council needs to make some important changes.

Changes can help to give everyone the best chance to learn, in the best possible school.



# What this means

We have looked at a lot of things that help schools give children the best education they can.

Things like:

- How good the building is
- How easy the building makes it to learn in
- The number of children here
- How many children we think may come here in the future



# What we found

- Some school buildings are old and need a lot of work to fix them.
- Some classrooms are too small or not the best shape for learning.
- It costs a lot of money to keep some schools warm and running.
- Some schools don't have many children, which can make it harder to run and means there might not be as many clubs, activities or learning opportunities.



# What we think

There is a plan to close Saltney Ferry and Saltney Wood Memorial schools in the future and build one brand-new school, where everyone can learn, play, and grow together in one happy place. This new school will:

- Bring all the children and teachers/staff together in one happy place.
- Be a lovely, new building that's safe and clean
- Have classrooms that are just the right size for learning and playing
- Help the planet by using less energy
- Save money so we can spend more on fun and learning
- Help teachers learn new things too
- Give you the chance to make even more friends!



# Where to build a new school

A new school for primary school children needs a lot of space.

Land at Saltney Ferry is in a future flood zone so it is very difficult to build here.

Wood Memorial does not have this problem and has land that can be built on whilst the current school remains open.

There is no other land available in Saltney to build on.

That's why we think Wood Memorial is the best place.



# Closing schools

We know that talking about closing a school can feel worrying..

- It can be a big change for the children who go there.
- It can also be a big change for the teachers and staff.
- We know it can affect the whole area around the school too. That's why we are thinking carefully about what's best for everyone.



# Effect on Pupils

Children who go to a school that closes:

- Will have to transfer to a new school.
- The distance some pupils may have to travel go to their new school will be more for some and less for others.
- The time it takes for pupils to get to their new school will be more for some and less for others.
- Have a new uniform.
- The school will have a new name.



# Difficult but Right

Even though we know how difficult it can be for everyone, we still think this is the right thing to do.

We think it is right to close Saltney Ferry and Saltney Wood Memorial because it means we will have:

- The right number of places for the number of primary school children in Saltney.
- Old buildings that cost a lot to run and maintain will not be needed.
- Better learning environment for pupils.



# The Proposal

What we think should happen is:

- To close Saltney Ferry and Saltney Wood Memorial.
- Keep both schools on their current sites as a joint school to begin with.
- Open a new school for all of the pupils at Saltney Ferry and Saltney Wood Memorial on land at Saltney Wood Memorial.



# What needs to happen

- We must ask lots of people what they think.
- We must take everyone's answers and put them all together.
- The Council's Cabinet, who make important decisions, will decide if it is right to continue.
- If so, we ask people if they object (think it is a bad idea) to the proposal.
- The Council's Cabinet will decide if it is right to continue.
- If so, then we will make it happen.



# When this could happen

- **Wednesday July 29<sup>th</sup> 2026** - Everyone's views must be received
- **September 2026** - Cabinet consider everyone's views
- **October 2026** - People who think it is a bad idea can tell us.
- **January 2027** – Cabinet makes final decision.



# When schools could close and open

- August 31st 2027 – Saltney Ferry and Saltney Wood Memorial close
- 1<sup>st</sup> September 2027 – A new Saltney Primary School opens on the current sites at Saltney Ferry and Saltney Wood Memorial.
- 01 September 2030 – new Primary School building opens on land at Saltney Wood Memorial.



# More Information

If you want to find out more, there is information in a much bigger document on the internet. Log on to:

<https://www.flintshire.gov.uk/en/Resident/Schools/School-Modernisation-Related/Proposal-To-Reorganise-Saltney-Ferry-C.P-And-Saltney-Wood-Memorial-C.P.aspx>



# Your views matter

Now that we've told you our idea, told you how you can find out more information and answered any of your questions, it is very important that you tell us what you think.

Your views matter.

In this booklet you can write down anything you want to tell us and any ideas you may have.



# Your School & Age

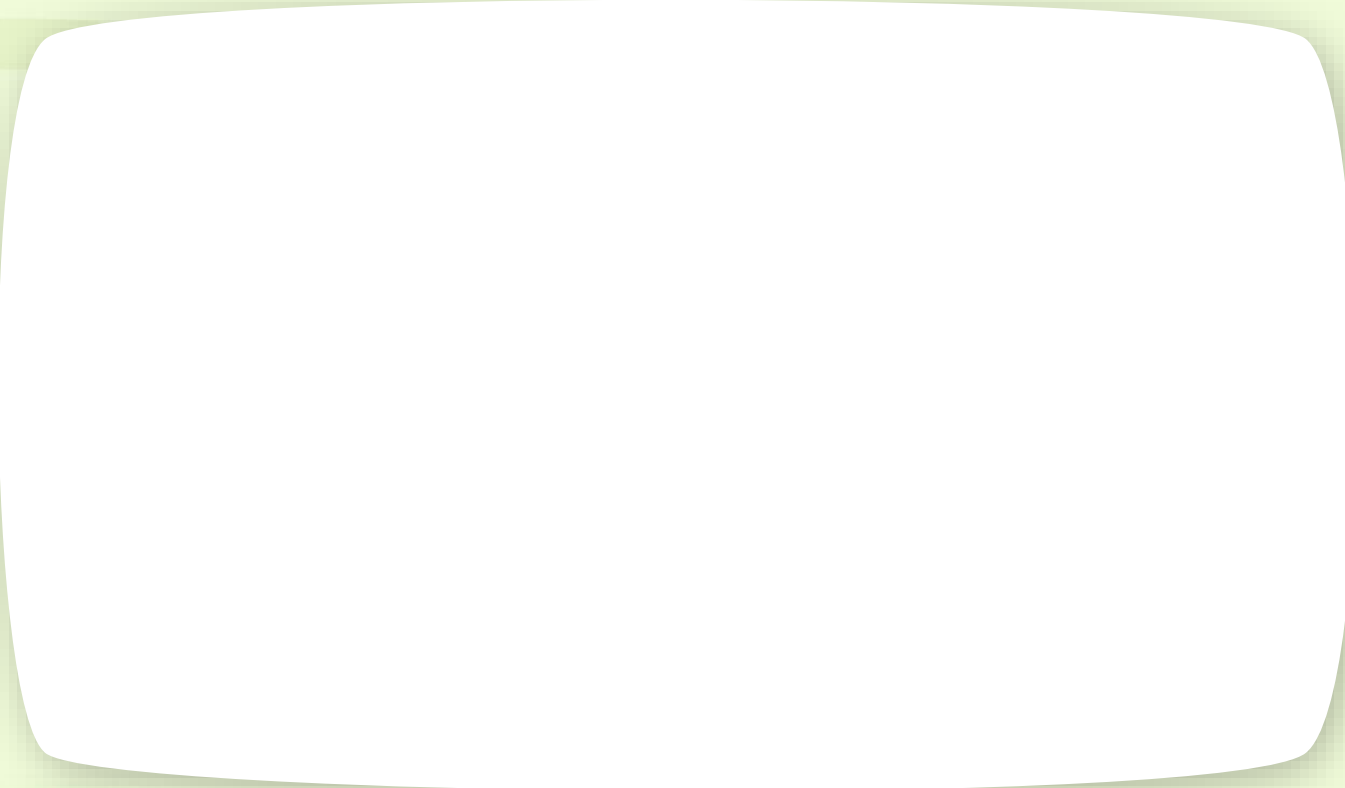
A large, empty white rounded rectangle intended for writing answers.

**Which school do you go to now and how old are you?**

Please write your answers in the box.



# Your Opinion

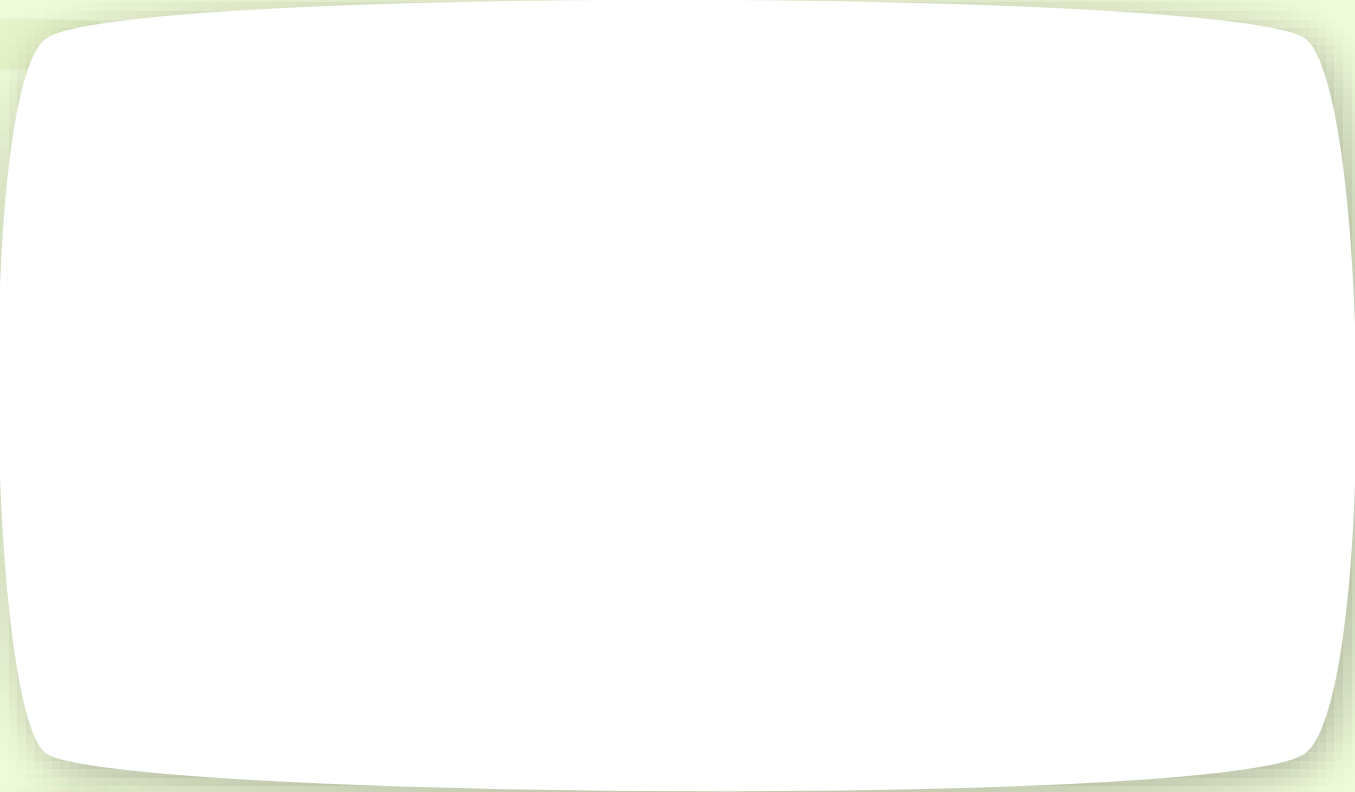


**Do you think our  
idea is good, bad  
or you're not sure?**

Please write your  
answers in the box.



# Your Reasons

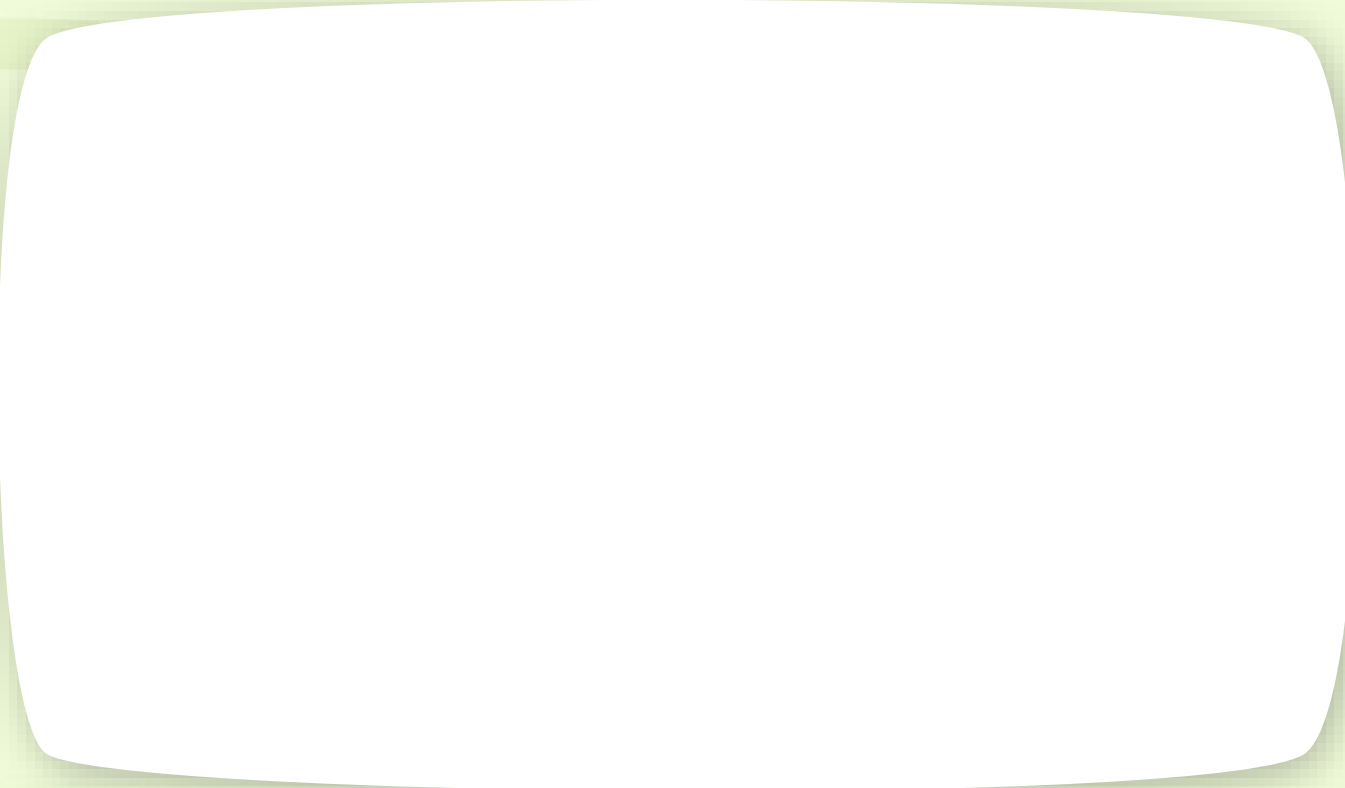


**Why do you think the proposal is good, bad or that you are unsure?**

**Please write your answers in the box.**



# Your Ideas

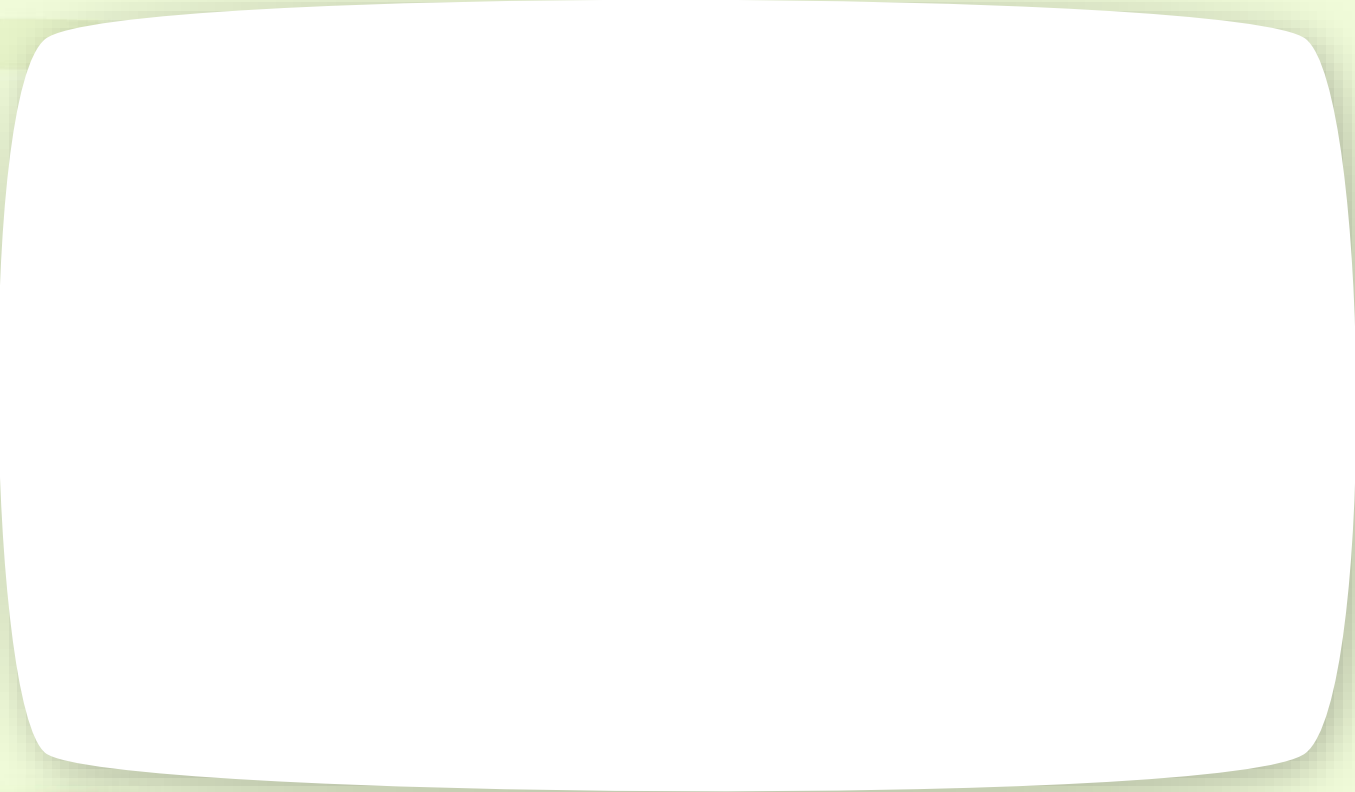


**Is there anything else  
you would like to see  
happen instead?**

**Please write your  
answers in the box.**



# Your voice



**Would you like to  
say anything  
else?**

Please write your  
answers in the box.



# What Happens Next?

Please post your completed booklet to us by **Wednesday July 29<sup>th</sup> 2026**. Unfortunately, we won't be able to accept anything you send us after this date.

Address: School Modernisation Team, Ty Dewi Sant, St David's Park, Ewloe, Flintshire, CH5 3TX

Or you can Email your comments to:  
**[saltneyconsultations@flintshire.gov.uk](mailto:saltneyconsultations@flintshire.gov.uk)**

## Would you like to say anything else?

Please write your answers in the box.



# Thank you!

