

STATUTORY CONSULTATION



Proposal to Reorganise the Catholic Education Provision in Flintshire



- Close St Anthony's Catholic VA Primary School in Saltney, which will cease to operate by 31 August 2026
- Amalgamate St David's Catholic VA Primary School in Mold, St Mary's Catholic VA Primary School in Flint and St Richard Gwyn Catholic VA High School in Flint
- Amalgamation would see the individual schools close by 31 August 2026 and a new amalgamated English medium 3-18 Catholic Voluntary Aided school, with a new name and school number, opened in September 2026, operating over the three current sites
- Move the new school to the new buildings from 01 September 2029



Consultation Period: Commences 03 June 2025 and Closes Midnight 18 July 2025

PART A. FOREWORD

On behalf of the Catholic Diocese of Wrexham

“The mission of the school is to develop a sense of truth, of what is good and beautiful. And this occurs through a rich path made up of many ingredients”.

“True education enables us to love life and opens us to the fullness of life”.

These words of Pope Francis addressed to school teachers in Italy on 10 May 2014, together with many educational documents and policies of the Catholic Bishops of England and Wales, have been an inspiration to me as I explore new patterns of collaboration between the schools of the Diocese of Wrexham. My core purpose is to ensure the future viability of our schools and to provide the best possible education for the children entrusted to our care.

Within the Diocese of Wrexham, part of our mission is to build on our current good practice to ensure the future excellence and viability of Catholic education. This mission is based on strong spiritual values and sound educational research. Our ambition is:

- The creation of a world class Catholic education system that enables all the children of the Diocese to achieve their spiritual, educational and human potential.*
- To work closely with stakeholders on re-structuring our schools to deliver a sustainable system that is fit for the future.*
- To provide a Catholic education for all those who wish to be educated within a Catholic setting and ethos*

We aim to review our school provision with this in mind.

Our mission is wholly in line with Welsh Government’s aspirations for education. This is backed by Organisation for Economic Co-operation and Development (OECD) evidence. I am conscious of the need for closer working between our schools. Our proposal for a new 3-18 school to replace St Anthony’s, Saltney, St David’s, Mold, St Mary’s, Flint and St Richard Gwyn, Flint which will allow for a seamless transition from early years up to A Level. It will put us in an advantageous position to deliver the new curriculum and give our children the benefits of an uninterrupted educational journey.

I firmly support this proposal which will develop:

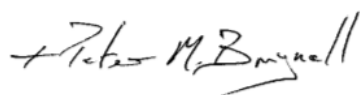
- a learning campus where children will develop their faith, skills and knowledge as confident citizens of the 21st century who are proud of their community, language and heritage;*
- continued improvement founded on current good practice;*
- a campus with excellent facilities for each age range;*

- *a centre of excellence in Catholic teaching and learning that works in close partnerships with all its feeder church schools;*
- *a worship and social centre for the schools' parishes and the community;*
- *A net zero carbon all through school;*
- *Shared leadership and excellence in governance*

This consultation process will give all associated with our community of Catholic schools in Flintshire the chance to ask questions about this exciting proposal. It is important that the vision of what can be achieved for our community is shared and understood by all.

I am confident that the proposed 3-18 Catholic school will be a strong and nurturing environment. I know the school will build on the ethos, successes and achievements already recognised in the four separate schools it will replace.

Your children deserve nothing less.



The Right Reverend Peter Brignall
Bishop of Wrexham



On behalf of Flintshire County Council

As the school curriculum evolves, as technologies advance and as external factors such as environmental and economic changes occur, Flintshire County Council must continually review its school estate to ensure that it is providing the best possible opportunities for learners, so that they can achieve their full potential.

The impact of years of financial austerity in the public sector and rising costs presents a major challenge to schools to ensure they remain financially sustainable. Driven by pupil numbers, school budgets are reducing due to a decreasing birth rate. This means that fewer children are entering the education system. The Catholic education provision in Flintshire has not been immune from falling pupil numbers and fewer children coming into schools means a higher number of surplus places and money being diverted from core curriculum activities which impacts directly on pupils.

With Council budgets also stretched to the limit, maintaining the current condition of schools is another challenge that is increasingly difficult to achieve. Despite significant investment by both the Diocese and the Council, the condition of school buildings could and should be better for both pupils and staff.

The Council has a responsibility to ensure that learning environments are maintained to a high standard, allowing pupils to feel safe and comfortable, as well as giving staff the facilities to deliver an outstanding education, as seen in many of our schools.

This is why, when the Council was approached by the Catholic Diocese of Wrexham with this proposal, the opportunity to review the Catholic education provision in Flintshire could not be ignored.

Through the School Modernisation Strategy, the Council has a proven track record of delivering modern, high-quality schools that provide a nurturing environment for both pupils and staff to flourish. Utilising funding made available via Welsh Government's Sustainable Communities for Learning Programme, along with the Council's own Capital Programme, £140m has been invested in new and refurbished school buildings over the last 10 years. This funding source can also be used to transform the Catholic education estate in Flintshire so there is equity for all learners..

The proposal being put forward by the Diocese is bold and not without its challenges but the prospect of a new, net zero carbon all-through school will ensure the delivery of Catholic education in Flintshire for years to come. This is why the Council have agreed to work with the Diocese as a strategic partner to deliver this transformative project.

Any proposal will have both positive and negative impacts should it be implemented. This is why consultation is the very important first step to determine whether or not the proposal is the right thing to do.

Your opinion matters.

The Council and the Diocese welcome your responses and they will be considered when deciding whether to proceed to the next stage.



Claire Homard

Chief Officer, Education and Youth, Flintshire County Council



CONTENTS

PART A. FOREWORD	2
PART B. OVERVIEW	8
B.1. Introduction	8
B.2. Overview of the Proposal	9
B.3. Consultation Requirements	9
B.4. Pre-Consultation	10
B.5. Who will be consulted?	10
B.6. How to respond to the consultation	11
B.7. Contact details	13
B.8. What will happen next?	13
PART C. THE CASE FOR CHANGE	15
C.1. Background to the Proposal	15
C.2. Current Position	16
C.3. School Locations	20
C.4. Demographical Information	20
C.5. Pupil Forecasts	25
C.6. Quality of Education Provision	29
PART D. THE PROPOSAL	32
D.1. What is being proposed?	32
D.2. What will the proposal provide?	32
D.3. When will the proposal be effective?	32
D.4. Cost of the Proposal	33
D.5. Options Considered	34
D.6. What will the preferred proposal achieve?	38
PART E. LIKELY IMPACTS OF THE PROPOSAL	39
E.1. Impact on Estyn Education Provision Areas	39
E.2. Impact on the Local Environment	40
E.3. Impact on Admissions	40



E.4.	Impact on Home to School Transport	40
E.5.	Impact on Transfer to Secondary Schools	41
E.6.	Impact on Additional Learning Needs (ALN) Pupils	41
E.7.	Impact on Governance Arrangements	41
E.8.	Impact on Staffing	41
E.9.	Impact on Other Schools	42
E.10.	Risks of the Proposal	45
E.11.	Integrated Impact Assessment	47
E.12.	Impact on Welsh Language Provision	47
E.13.	Building Impacts	47
E.14.	Interim Arrangements	47

This consultation document is published in hard copy, if you require a paper copy of this document, or a copy of the document in a different format for example braille or large print, or help with interpretation in a different language, please contact the School Modernisation Team on 01352 704014, 01352 704018 or 01352 702188, or e-mail CatholicEducationConsultation@flintshire.gov.uk.

PART B. OVERVIEW

B.1. Introduction

This consultation document is an opportunity for stakeholders and other interested parties to learn about changes and give feedback on the proposal to reorganise the Catholic education provision in Flintshire.

This document represents the responsibilities of the Catholic Diocese of Wrexham ([the Diocese](#)) and of Flintshire County Council ([the Council](#)) to consult with appropriate stakeholders when giving consideration to any significant school reorganisation. These responsibilities are part of the School Standards and Organisation (Wales) Act 2013.

Following the regulatory guidance of the School Organisation Code 2018, the Council wish to consult interested stakeholders regarding reorganisation of the Catholic education provision in Flintshire. The proposal involves the closures of St Anthony's Catholic VA Primary School in Saltney, St David's Catholic VA Primary School in Mold, St Mary's Catholic VA Primary School in Flint and St Richard Gwyn Catholic VA High School in Flint. The proposal also involves the opening of a new English-medium 3-18 Catholic Voluntary Aided School in Flint.

The consultation provides stakeholders with an opportunity to ask questions, make comments, and share their views on the proposals being put forward. Responses to this consultation will be reviewed carefully when the Council considers whether the proposal should be taken forward to implementation.

This document sets out information which stakeholders should consider to fully participate in the consultation process.

Any figures, statistics and material referenced in this document are the most accurate available at the time of preparation and publication.

B.2. Overview of the Proposal

The Diocese and the Council are seeking your views on a proposal to reorganise the Catholic education provision in Flintshire.

It is proposed to:

- Close St Anthony's Catholic VA Primary School in Saltney, which will cease to operate by 31 August 2026.
- Amalgamate St David's Catholic VA Primary School in Mold, St Mary's Catholic VA Primary School in Flint and St Richard Gwyn Catholic VA High School in Flint.
- Amalgamation would see the individual schools close by 31 August 2026 and a new amalgamated English medium 3-18 Catholic Voluntary Aided school, with a new name and school number, opened in September 2026, operating over the three current sites.
- Move the new school to the new buildings from 01 September 2029.

To achieve these changes, the Council, in partnership with Welsh Government, is planning to invest £55m in a new school. Under Welsh Government Sustainable Community for Learning funding conditions, Welsh Government will contribute 85% of the total project costs, with the remaining 15% funded by Council capital borrowing.

Note: this proposal is running concurrently with the proposal to amalgamate Saltney Ferry CP School and Wood Memorial CP School, Saltney.

B.3. Consultation Requirements

The Diocese and the Council have a responsibility as part of the School Standards and Organisation (Wales) Act 2013 to consult with appropriate stakeholders when giving consideration to any significant school reorganisation proposals.

The School Standards and Organisation (Wales) Act 2013 and School Organisation Code 2018 describes a number of regulated alterations to maintained schools, which must not be carried out unless the relevant local authority and/or governing body have complied with the requirements imposed by the Code.

Statutory procedures are usually necessary to make significant changes to schools. The procedures are designed to enable changes to be made where they are considered necessary, but in a way which protects the interests of learners and allows interested parties the opportunity to have their say in the process. Welsh Government have published these procedures within the School Organisation Code 2018 (["the Code"](#)).

The formal consultation process will operate for at least 42 days, with at least 20 of these being school days. There will be opportunities to ask questions and make comments that will be considered when the Council determines whether or not the proposal is to be implemented.

In accordance with the agreed children and young people's participation standards for Wales, Article 12 of UNCRC established that "*Children have the right to say what they think should happen, when adults are making decisions that affect them, and to have their opinions taking into account*".

The views of children and young people are extremely important to the Diocese and the Council, therefore children and young people will be provided with opportunities to contribute to this consultation process. The Council has produced a summary version of this document which will be made accessible for all children and young people affected by this proposal.

B.4. Pre-Consultation

Prior to publication, in accordance with the Code, the Diocese undertook a formal consultation with its trustees who supported the preferred option. No new options emerged. This consultation concluded on 22nd January 2025.

B.5. Who will be consulted?

This consultation **commences 03 June 2025 and closes Midnight 18 July 2025**. This allows 45 days for responses to be received, 33 of which are school days.

The following have advised by letter or email of the availability of this document and that, if they wish, can receive a hard copy:

- Parents (and where possible prospective parents) carers and guardians, and staff members of schools affected by the proposals;
- in the case of proposals affecting secondary provision, parents of pupils attending primary schools from which pupils normally transfer to that secondary school;
- the maintaining or proposed maintaining authority for any school likely to be affected by the proposals;
- any other local authority (including those in England, where appropriate) likely to be affected - including in the case of dedicated SEN provision any authority placing or likely to place pupils with SEN in it;
- the Church in Wales and Roman Catholic Diocesan Authority for the area in which any school likely to be affected is located;
- any other appropriate religious body for any school likely to be affected by the proposals;
- the governing body of any school which is the subject of the proposals;

- the governing body of other schools which the proposer consider are likely to be affected by the proposals;
- the Welsh Ministers;
- Constituency and Regional Assembly Members (AMs) and Members of Parliament (MPs) representing the area served by/intended to be served by any school which is the subject of the proposals;
- Estyn;
- teaching and staff trade unions representing teachers and other staff at any school which is the subject of the proposals;
- the relevant Regional Education Consortium;
- the Police and Crime Commissioner for the area served by/intended to be served by any school which is the subject of the proposals;
- any community or town council for the area served by/ intended to be served by any school which is the subject of the proposals;
- in the case of proposals affecting nursery provision any independent or voluntary providers who may be affected including Mudiad Meithrin;
- in the case of proposals affecting nursery provision, the Children and Young People's Partnership and/or the Early Years Development and Childcare Partnerships where present;
- in the case of proposals affecting SEN provision, any relevant health or third sector bodies with an interest;
- in the case of proposals affecting secondary provision, any further education institutions serving the area of the school; and
- in the case of proposals affecting Welsh language provision, the Welsh Language Commissioner.

This document has been published on the Diocese's website and can be found by following the link below:

<https://www.rcdwxmeducation.org/flintshire-reorganisation>

This document has also been published on the Council's website and can be found by following the link below:

<https://flintshire.gov.uk/CatholicEducationConsultation>

B.6. How to respond to the consultation

Your views on the proposals to reorganise the Catholic education provision in Flintshire are important to us. The Diocese and the Council wants you to engage in this consultation and tell us what you think of the proposal, particularly if they may affect you or your children.

The Diocese and the Council are now engaging in statutory consultation processes with all interested parties to ensure that any decision taken is one that is informed.

The timescales for the formal consultation aspects of these statutory proposals are:

Statutory Consultation Period Commences	Statutory Consultation Period Ends	Period Of Consultation
03 June 2025	18 July 2025	45 days, 33 of which are school days

You can respond to this consultation by completing the online questionnaire which is available on our website or by following this link:

<https://www.smartsurvey.co.uk/s/catholiceducationconsultation/>



A paper copy of the questionnaire is also available at the back of this document. Alternatively, you can respond in writing using the contact details on the next page.

Large print, Braille, and alternative language versions of this document will also be made available upon request via the contact details below. We welcome correspondence in Welsh and English and you will receive a response in the same language. Use of either language will not lead to a delay.

To allow children and young people to participate in this consultation, a version of this document has been created that is relevant to their age and their level of likely understanding. This presents the information in a friendly way and allows children and young people to reach an informed decision. The document can be found here:

<https://flintshire.gov.uk/CatholicEducationConsultation>

All responses must be received by **midnight 18 July 2025**.

No public drop-in events will be held during this consultation. Instead, questions can be submitted by e-mail to **CatholicEducationConsultation@flintshire.gov.uk**. Council Officers will provide a response within 7 working days on matters of process.

Staff and Governor events have been co-ordinated with the individual schools.

B.7. Contact details

All responses should be sent to the following address:

- School Modernisation Team
Flintshire County Council
Ty Dewi Sant
St David's Park
Ewloe
Flintshire CH5 3FF
- E-mail: CatholicEducationConsultation@flintshire.gov.uk
- Phone: 01352 704014, 01352 704018 or 01352 702188

A post-box will also be available at St Anthony's, St David's, St Mary's, St Richard Gwyn, St Winefride's and Venerable Edward Morgan receptions to post responses.

B.8. What will happen next?

Once the consultation period has ended, a Consultation Report will be produced which will outline the feedback received. The Council's Cabinet will consider the consultation report and will decide whether or not they wish to proceed with the preferred option outlined in the consultation document. **It should be noted that responses received during this period will not be logged as objections to the proposal.**

If the first part of the process is approved to proceed by the Council's Cabinet, a **Statutory Notice** will be published, followed by a period of 28 days for you to submit formal objections in writing. To be considered as a statutory objection, an objection **must** be made in writing or by email at the addresses above within the 28-day timescale.

Following the Statutory Notice period the Council's Cabinet would then need to consider another report, summarising any objections and issues raised and the Council's response to them, called the **Objection Report**. This will determine whether or not to proceed to implementation. This report will also be available for all persons to view on the Council's website or by request for a hard copy.

The Council's Cabinet will determine whether to approve, or not, the proposal after consideration of the Objection Report.

Once a decision has been made an electronic copy will be sent out to all stakeholders identified on the correspondence list called a **Decision Notification** within 7 days of the decision.

The proposed timetable for decision making following the formal consultation process is:

Stage of Process	Key Dates
Cabinet consider the results of the consultation and determines whether to proceed with proposals	September / October 2025
Council publish statutory notice and enter into an objection period	October / November 2025
Cabinet consider the objection report and determine whether or not to implement the proposals	January / February 2026
Decision notification letter is issued with outcome from Cabinet determination	January / February / March 2026

The remainder of the consultation document sets out the rationale for the proposed changes to reorganise the Catholic education provision in Flintshire. We would like you to consider the information contained within this document and to hear your views as to whether or not you support the proposals.

PART C. THE CASE FOR CHANGE

C.1. Background to the Proposal

This school modernisation proposal is necessary because the local authority must ensure the following:

- Provision of high-quality and sustainable education.
- Improvement of school buildings and facilities.
- Availability of the right number and type of school places in the right locations.
- Addressing unsustainable school buildings and supporting infrastructure.
- Recognition that inaction will lead to higher pupil-teacher ratios as funding decreases.
- Maximisation of external funding through the Welsh Government's Sustainable Communities for Learning Programme.

As part of the consultation process, the Diocese and the Council are seeking your views on the proposal to reorganise the Catholic education provision in Flintshire.

Delivery of this reorganisation is proposed by:

- Close St Anthony's Catholic VA Primary School in Saltney, which will cease to operate by 31 August 2026.
- Amalgamate St David's Catholic VA Primary School in Mold, St Mary's Catholic VA Primary School in Flint and St Richard Gwyn Catholic VA High School in Flint.
- Amalgamation would see the individual schools close by 31 August 2026 and a new amalgamated English medium 3-18 Catholic Voluntary Aided school, with a new name and school number, opened in September 2026, operating over the three current sites.
- Move the new school to the new buildings from 01 September 2029.

C.2. Current Position

C.2.i. St Anthony's Catholic Voluntary Aided Primary School, Saltney

Location of the School		High Street, Saltney CH4 8SG	
Age Range		3-11	
School Category		Voluntary Aided	
Language Medium Category		English medium	
Faith denomination		Catholic	
		Reception-Year 6	Nursery
Number of pupils on the school register	September 2020	99	8
	September 2021	76	5
	September 2022	77	2
	September 2023	69	4
	September 2024	68	6
Capacity	September 2024	152	19
Surplus Places	September 2024	84	13
Pupil Forecasts	September 2025	59	6
	September 2026	55	6
	September 2027	52	6
	September 2028	46	6
	September 2029	42	6
Building Condition Category	Condition Grade B – Satisfactory Performing as intended but exhibiting minor deterioration.		
Building Suitability	Suitability C - Poor Teaching methods inhibited/adverse		
Cost to Resolve Condition Issues	£16,300 This is exclusive of any applicable fees, preliminaries, and VAT.		

Carbon Impact

St Anthony's Catholic Primary School has a Display Energy Certificate with an energy performance operational rating of E. The school uses a natural gas heating system. In 2023-24 the school consumed 25,322kWh of electricity and 59,087kWh of gas. This equated to a total of 19,554kgCO₂e. A replacement facility built to Net Zero Carbon in Operation (NZCio) standard would remove these emissions from the Council's carbon footprint by incorporating renewable energy systems and natural ventilation and shading.

C.2.ii. St David's Catholic Voluntary Aided Primary School, Mold

Location of the School		St David's Lane, Mold CH7 1LH	
Age Range		3-11	
School Category		Voluntary Aided	
Language Medium Category		English medium	
Faith denomination		Catholic	
		Reception-Year 6	Nursery
Number of pupils on the school register	September 2020	80	11
	September 2021	74	10
	September 2022	77	5
	September 2023	68	7
	September 2024	71	8
Capacity	September 2024	144	14
Surplus Places	September 2024	73	6
Pupil Forecasts	September 2025	68	7
	September 2026	63	8
	September 2027	59	8
	September 2028	54	8
	September 2029	51	8
Building Condition Category	Condition Grade B – Satisfactory Performing as intended but exhibiting minor deterioration.		
Building Suitability	Suitability C - Poor Teaching methods inhibited/adverse		
Cost to Resolve Condition Issues	£90,112 This is exclusive of any applicable fees, preliminaries, and VAT. (note: Reduced from £150,000 stated in Cabinet report due to new Condition Report becoming available in February 2025)		

Carbon Impact

St David's Catholic Primary School has a Display Energy Certificate with an energy performance operational rating of C. The school uses a natural gas heating system. In 2023-24 the school consumed 22,765kWh of electricity and 118,312kWh of gas. This equated to a total of 31,474kgCO₂e. A replacement facility built to Net Zero Carbon in Operation (NZCio) standard would remove these emissions from the Council's carbon footprint by incorporating renewable energy systems and natural ventilation and shading.

C.2.iii. St Mary's Catholic Voluntary Aided Primary School, Flint

Location of the School		Ffordd Llewelyn, Flint CH6 5JZ	
Age Range		3-11	
School Category		Voluntary Aided	
Language Medium Category		English medium	
Faith denomination		Catholic	
		Reception-Year 6	Nursery
Number of pupils on the school register	September 2020	211	27
	September 2021	208	26
	September 2022	218	25
	September 2023	224	28
	September 2024	232	29
Capacity	September 2024	317	29
Surplus Places	September 2024	85	0
Pupil Forecasts	September 2025	232	32
	September 2026	232	32
	September 2027	231	31
	September 2028	221	32
	September 2029	222	32
Building Condition Category	Condition C - Poor Exhibiting major defects and/or not operating as intended.		
Building Suitability	B - Satisfactory Performing as intended but does not support the Curriculum in some areas		
Cost to Resolve Condition Issues	£253,200 This is exclusive of any applicable fees, preliminaries, and VAT.		

Carbon Impact

St Mary's Catholic Primary School has a Display Energy Certificate with an energy performance operational rating of D. The school uses a natural gas heating system. In 2023-24 the school consumed 51,980kWh of electricity and 206,712kWh of gas. This equated to a total of 58,345kgCO₂e. A replacement facility built to Net Zero Carbon in Operation (NZCio) standard would remove these emissions from the Council's carbon footprint by incorporating renewable energy systems and natural ventilation and shading.

C.2.iv. St Richard Gwyn Catholic Voluntary Aided Secondary School, Flint

Location of the School		Albert Avenue, Flint CH6 5JZ
Age Range		11-18
School Category		Voluntary Aided
Language Medium Category		English medium
Faith denomination		Catholic
		Year 7-13
Number of pupils on the school register	September 2020	784
	September 2021	808
	September 2022	805
	September 2023	772
	September 2024	794
Capacity	September 2024	969
Surplus Places	September 2024	175
Pupil Forecasts	September 2025	796
	September 2026	762
	September 2027	774
	September 2028	741
	September 2029	711
Building Condition Category	Condition C - Poor Exhibiting major defects and/or not operating as intended.	
Building Suitability	Suitability C - Poor Teaching methods inhibited/adverse	
Cost to Resolve Condition Issues	£430,000 This is exclusive of any applicable fees, preliminaries, and VAT.	

Carbon Impact

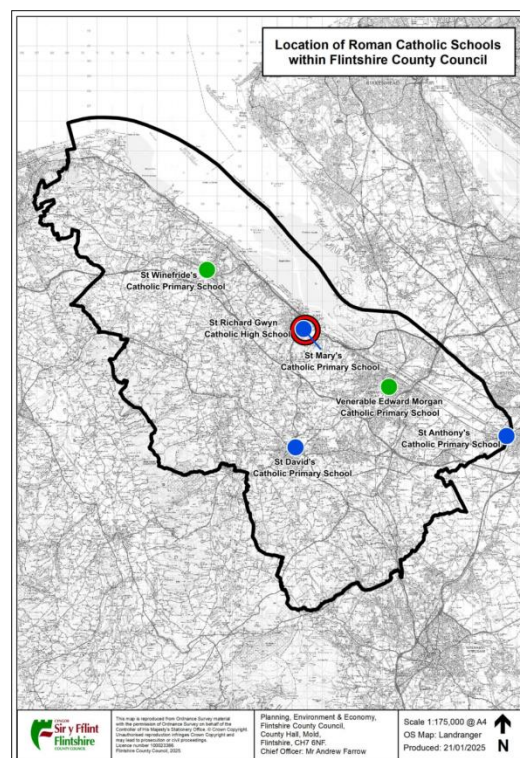
St Richard Gwyn Catholic High School has a Display Energy Certificate with an energy performance operational rating of D. The school uses a natural gas heating system. In 2023-24 the school consumed 245,094kWh of electricity and 808,630kWh of gas. This equated to a total of 239,717kgCO₂e. A replacement facility built to Net Zero Carbon in Operation (NZCio) standard would remove these emissions from the Council's carbon footprint by incorporating renewable energy systems and natural ventilation and shading.

C.3. School Locations

Saltney is a town and part of the Saltney Ferry electoral ward of Flintshire, situated to the east of the village of Broughton and on the Welsh-English border with the City of Chester. The resident population of the Saltney Ferry ward, as measured in the 2021 census, was 5,140.

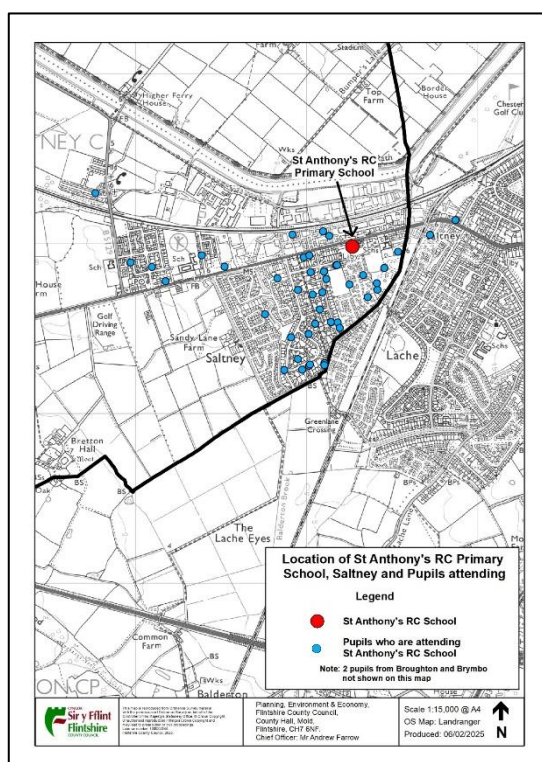
Mold is a town consisting of four electoral wards of Flintshire, situated centrally within the county. The resident population of the four Mold wards, as measured in the 2021 census, was 10,148.

Flint is a coastal town consisting of three electoral wards of Flintshire, situated in the north of the county. The resident population of the three Flint wards, as measured in the 2021 census, was 13,736.



C.4. Demographical Information

C.4.i. St Anthony's Catholic Voluntary Aided Primary School, Saltney



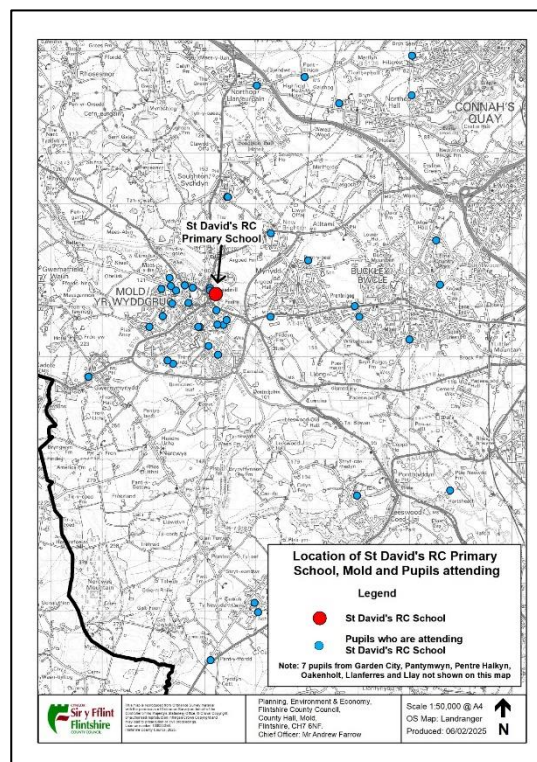
Demographically analysis (as at September 2024) has shown that 98.39% of pupils attending St Anthony's are attending their nearest English-medium voluntary aided Catholic primary school.

Map of Locations of Pupils Attending St Anthony's.

C.4.ii. St David's Catholic Voluntary Aided Primary School, Mold

Demographically analysis (as at September 2024) has shown that 79.71% of pupils attending St David's are attending their nearest English-medium voluntary aided Catholic primary school.

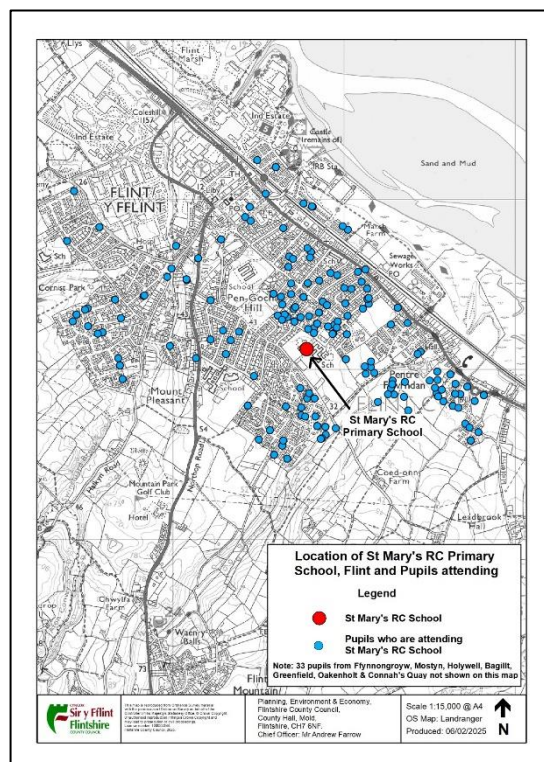
Map of Locations of Pupils Attending St David's.



C.4.iii. St Mary's Catholic Voluntary Aided Primary School, Flint

Demographically analysis (as at September 2024) has shown that 91.98% of pupils attending St Mary's are attending their nearest English-medium voluntary aided Catholic primary school.

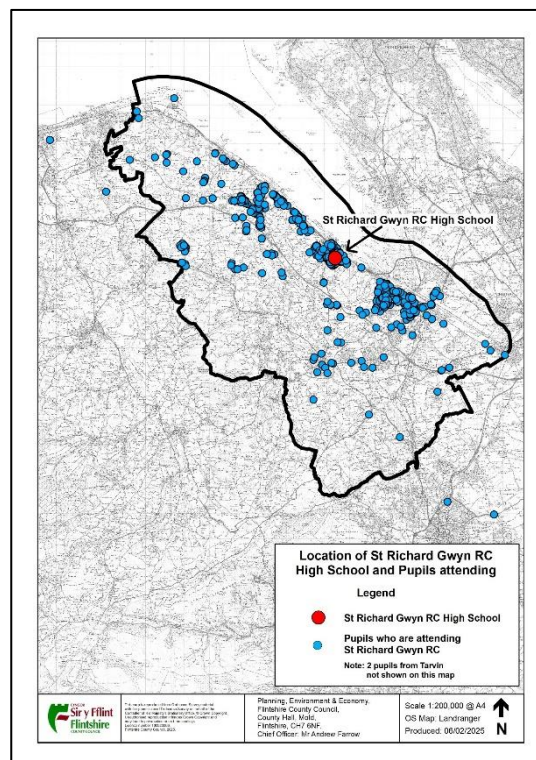
Map of Locations of Pupils Attending St Mary's.



C.4.iv. St Richard Gwyn Catholic Voluntary Aided Secondary School, Flint

Demographically analysis (as at September 2024) has shown that 100.00% of pupils attending St Richard Gwyn are attending their nearest English-medium voluntary aided Catholic secondary school.

Map of Locations of Pupils Attending St Richard Gwyn.



C.4.v. Area Evaluations

The Flintshire Local Development Plan (LDP) was adopted by the Council in 2023 and covers the period 2015 to 2030. The plan sets out how towns and villages in Flintshire will grow and change, including where development should and shouldn't happen.

The LDP may impact pupil numbers and could influence Council's duty to provide the appropriate number of school places in the right locations, whilst reducing running costs and ensuring sustainability.

In the Saltney Ferry ward, there are four schools:

- Saltney Ferry Community Primary School.
- Wood Memorial Community Primary School.
- St Anthony's Catholic Voluntary Aided Primary School.
- St David's High School.

The nearest Catholic primary and secondary schools to St Anthony's, by walking distance, are:

- Venerable Edward Morgan Catholic Voluntary Aided Primary School, Shotton (6.11 miles).
- St Richard Gwyn Catholic Voluntary Aided High School, Flint (10.32 miles).

This makes St Anthony's the only Catholic primary school directly serving the Saltney Ferry ward.

There are no sites for development in the Saltney area identified in the current LDP. Without additional pupils moving to the area, the high number of surplus places at St Anthony's (84 / 55.26%) indicate insufficient demand for the school. Therefore, closing St Anthony's would remove the surplus places in the area.

In the Mold East ward, there are two schools:

- St David's Catholic Voluntary Aided Primary School.
- Ysgol Bryn Coch.

Within the other three Mold ward there are four schools:

- Ysgol Bryn Gwalia.
- Ysgol Glanrafon.
- Alun High School.
- Ysgol Maes Garmon.

The nearest Catholic primary and secondary schools to St David's, by walking distance, are:

- Venerable Edward Morgan Catholic Voluntary Aided Primary School, Shotton (5.56 miles).
- St Richard Gwyn Catholic Voluntary Aided High School, Flint (5.90 miles).

This makes St David's the only Catholic primary school directly serving the Mold East ward and the wider Mold area.

There are sites in the Mold area that were allocated for development in the LDP but have yet to be completed. These sites could attract more pupils to the area when completed, however given the number of schools in the area, and the application of parental preference for school admissions, it cannot be determined where any additional pupils would attend school.

Without any or very low additional pupils attending the school, the high number of surplus places at St David's (73 / 50.69%) indicate insufficient demand for the school. Therefore closing St David's would remove the surplus places in the area.

In the Flint Coleshill and Trelawny ward, there are five schools:

- Cornist Park Community Primary School.
- St Mary's Catholic Voluntary Aided Primary School.
- Ysgol Gwynedd.

- Flint High School.
- St Richard Gwyn Catholic Voluntary Aided High School.

Within the other two Flint wards there is one school:

- Ysgol Gymraeg Croes Atti.

The nearest Catholic primary and secondary schools to St Mary's, by walking distance, are:

- Venerable Edward Morgan Catholic Voluntary Aided Primary School, Shotton (4.94 miles).
- St Richard Gwyn Catholic Voluntary Aided High School, Flint (0.15 miles).

This makes St Mary's the only Catholic primary school directly serving the Flint Coleshill and Trelawny ward and the wider Flint area.

St Richard Gwyn is the only Catholic high school in Flintshire and therefore serves the whole county.

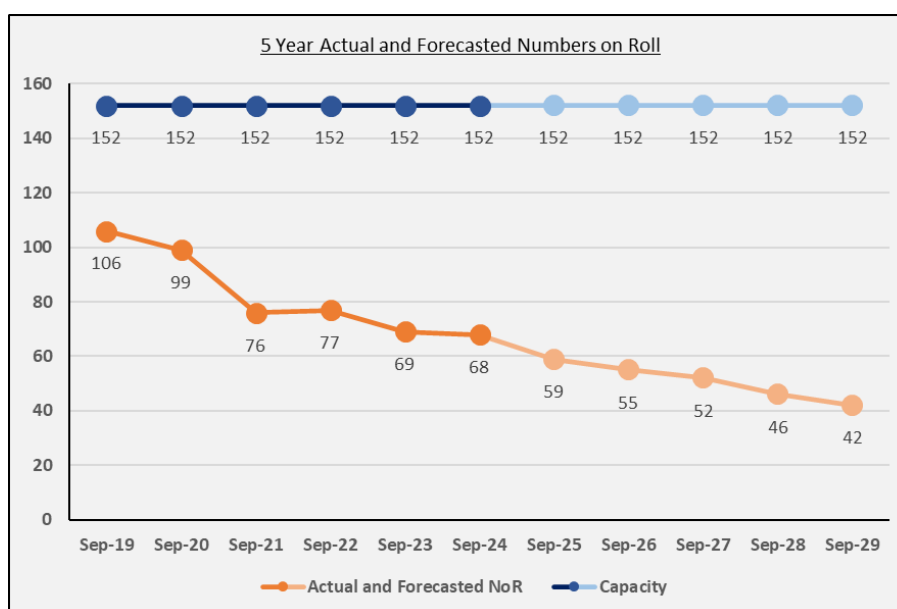
There are sites in the Flint area that were allocated for development in the LDP but have yet to be completed. These sites could attract more pupils to the area when completed, however given the number of schools in the area, and the application of parental preference for school admissions, it cannot be determined where any additional pupils would attend school.

Without any or very low additional pupils attending the school from housing developments, the number of surplus places at St Mary's (85 / 26.81%) will still be high but significantly lower when compared to St Anthony's and St David's respectfully.

C.5. Pupil Forecasts

C.5.i. St Anthony's Catholic Voluntary Aided Primary School, Saltney

	ACTUAL					LATEST DATA	FORECAST					
Year Group	Sep-19	Sep-20	Sep-21	Sep-22	Sep-23	Sep-24	Sep-25	Sep-26	Sep-27	Sep-28	Sep-29	5 Year Trend
Nursery	10	8	5	2	4	6	6	6	6	6	6	0
Reception	16	12	9	6	4	6	6	6	6	6	6	0
Year 1	19	15	10	10	7	6	6	6	6	6	6	0
Year 2	12	17	9	9	9	10	6	6	6	6	6	-4
Year 3	17	12	15	11	9	12	10	6	6	6	6	-6
Year 4	15	16	11	14	13	9	12	10	6	6	6	-3
Year 5	16	12	14	11	14	10	9	12	10	6	6	-4
Year 6	11	15	8	16	13	15	10	9	12	10	6	-9
Total	106	99	76	77	69	68	59	55	52	46	42	-26
Capacity	152	152	152	152	152	152	152	152	152	152	152	0
Surplus Places	46	53	76	75	83	84	93	97	100	106	110	26
Surplus Places %	30.26%	34.87%	50.00%	49.34%	54.61%	55.26%	61.18%	63.82%	65.79%	69.74%	72.37%	17.11%
Admission Number	21	21	21	21	21	21	21	21	21	21	21	0
	Reception transfers in to the school from a nearby school forecasted to exceed their admission number											0
	Reception transfers out of the school to a nearby school as admission number forecasted to be exceeded											0

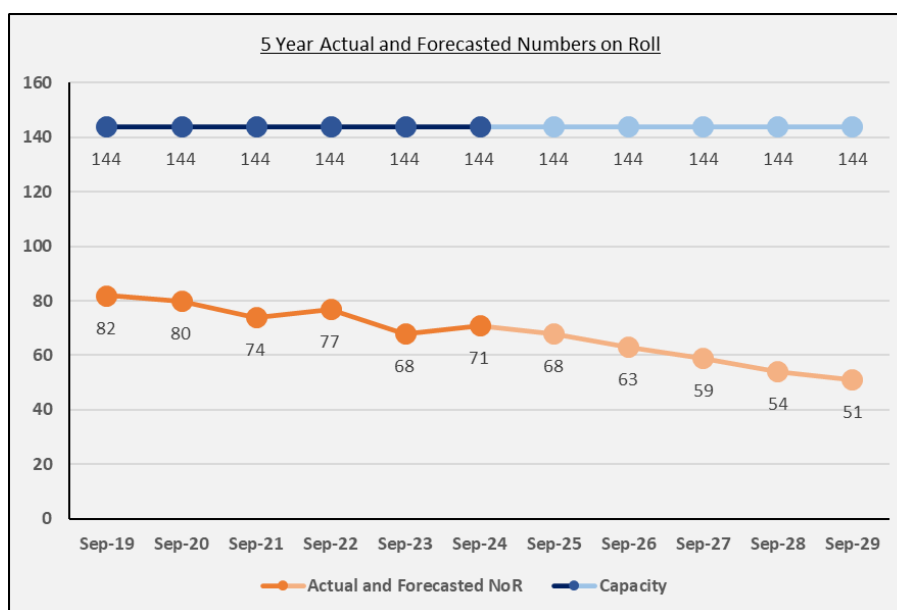


September 2025

Flintshire County Council School Admissions has announced that as of the current publication date, 5 reception class places have been assigned for September 2025, under the anticipated figure of 6. 3 nursery places have been allocated, under of the projected 6. Together these statistics reflect a decreasing number at St Anthony's and significant surplus places compared to capacity.

C.5.ii. St David's Catholic Voluntary Aided Primary School, Mold

	ACTUAL					LATEST DATA	FORECAST					
Year Group	Sep-19	Sep-20	Sep-21	Sep-22	Sep-23	Sep-24	Sep-25	Sep-26	Sep-27	Sep-28	Sep-29	5 Year Trend
Nursery	14	11	10	5	7	8	7	8	8	8	8	0
Reception	9	12	11	11	4	8	8	7	8	8	8	0
Year 1	11	7	11	12	10	4	8	8	7	8	8	4
Year 2	8	12	7	12	13	11	4	8	8	7	8	-3
Year 3	12	8	13	10	13	13	11	4	8	8	7	-6
Year 4	12	13	7	12	10	12	13	11	4	8	8	-4
Year 5	15	14	11	9	10	12	12	13	11	4	8	-4
Year 6	15	14	14	11	8	11	12	12	13	11	4	-7
Total	82	80	74	77	68	71	68	63	59	54	51	-20
Capacity	144	144	144	144	144	144	144	144	144	144	144	0
Surplus Places	62	64	70	67	76	73	76	81	85	90	93	20
Surplus Places %	43.06%	44.44%	48.61%	46.53%	52.78%	50.69%	52.78%	56.25%	59.03%	62.50%	64.58%	13.89%
Admission Number	20	20	20	20	20	20	20	20	20	20	20	0
	Reception transfers in to the school from a nearby school forecasted to exceed their admission number											0
	Reception transfers out of the school to a nearby school as admission number forecasted to be exceeded											0

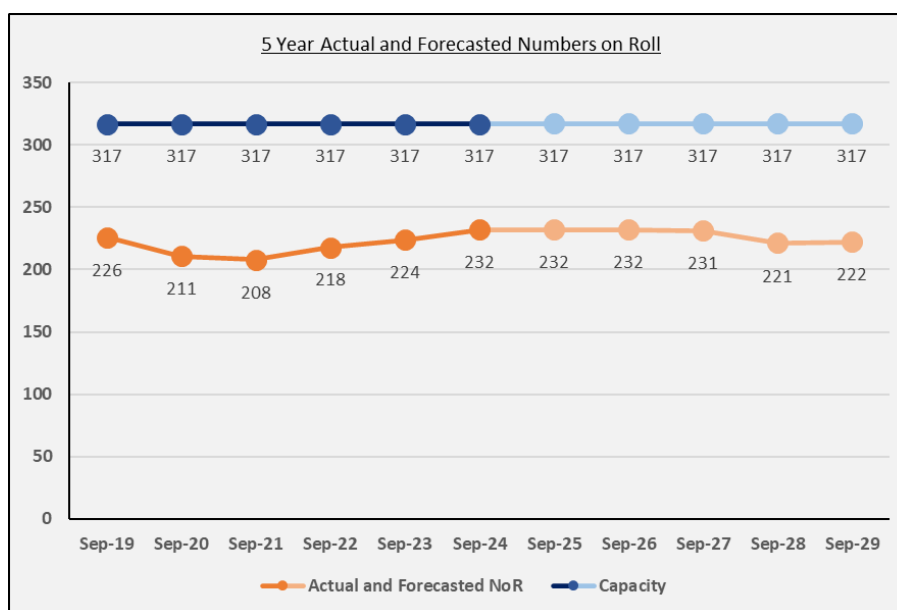


September 2025

Flintshire County Council School Admissions has announced that as of the current publication date, 8 reception class places have been assigned for September 2025, as anticipated. 11 nursery places have been allocated, over of the projected 7. Together these statistics reflect a decreasing number at St David's and significant surplus places compared to capacity.

C.5.iii. St Mary's Catholic Voluntary Aided Primary School, Flint

	ACTUAL					LATEST DATA	FORECAST					
Year Group	Sep-19	Sep-20	Sep-21	Sep-22	Sep-23	Sep-24	Sep-25	Sep-26	Sep-27	Sep-28	Sep-29	5 Year Trend
Nursery	21	27	26	25	28	29	32	32	31	32	32	3
Reception	18	23	29	29	28	33	29	32	32	31	32	-1
Year 1	28	19	26	36	30	33	33	29	32	32	31	-2
Year 2	31	28	23	29	40	31	33	33	29	32	32	1
Year 3	31	30	28	27	32	41	31	33	33	29	32	-9
Year 4	35	30	32	26	30	33	41	31	33	33	29	-4
Year 5	47	35	33	36	28	32	33	41	31	33	33	1
Year 6	36	46	37	35	36	29	32	33	41	31	33	4
Total	226	211	208	218	224	232	232	232	231	221	222	-10
Capacity	317	317	317	317	317	317	317	317	317	317	317	0
Surplus Places	91	106	109	99	93	85	85	85	86	96	95	10
Surplus Places %	28.71%	33.44%	34.38%	31.23%	29.34%	26.81%	26.81%	26.81%	27.13%	30.28%	29.97%	3.15%
Admission Number	45	45	45	45	45	45	45	45	45	45	45	0
	Reception transfers in to the school from a nearby school forecasted to exceed their admission number											0
	Reception transfers out of the school to a nearby school as admission number forecasted to be exceeded											0

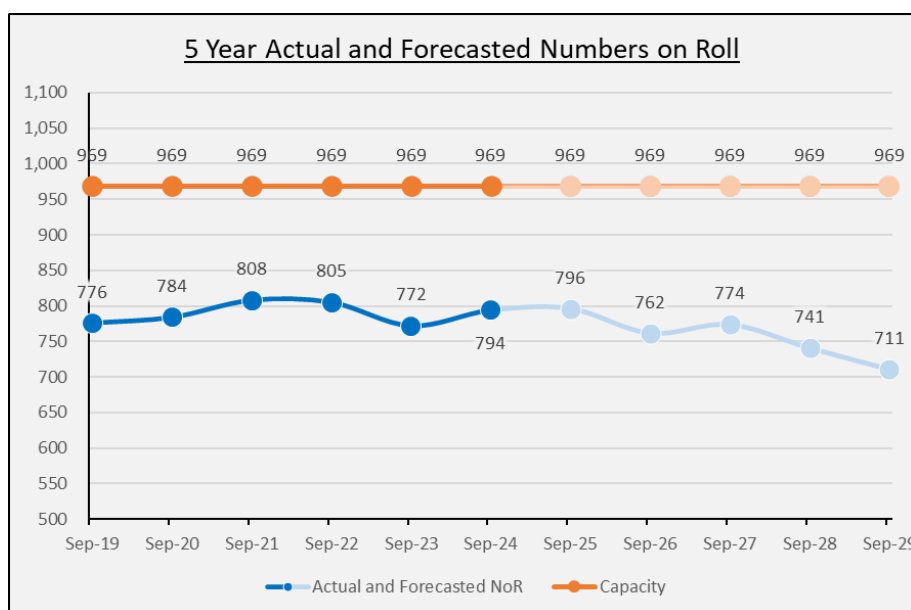


September 2025

Flintshire County Council School Admissions has announced that as of the current publication date, 29 reception class places have been assigned for September 2025, as the anticipated. 20 nursery places have been allocated, under of the projected 32. The number of surplus places for September 2025 is concerning.

C.5.iv. St Richard Gwyn Catholic Voluntary Aided Secondary School, Flint

	ACTUAL					LATEST DATA	FORECAST					
Year Group	Sep-19	Sep-20	Sep-21	Sep-22	Sep-23	Sep-24	Sep-25	Sep-26	Sep-27	Sep-28	Sep-29	5 Year Trend
Year 7	168	121	151	123	129	136	131	128	144	111	103	-33
Year 8	145	167	124	149	128	134	136	131	128	144	111	-23
Year 9	103	149	167	131	155	127	134	136	131	128	144	17
Year 10	142	106	149	160	136	165	127	134	136	131	128	-37
Year 11	123	143	102	152	161	137	165	127	134	136	131	-6
Year 12	50	51	70	31	40	59	50	60	47	49	50	-9
Year 13	45	47	45	59	23	36	53	45	54	42	44	8
Total	776	784	808	805	772	794	796	762	774	741	711	-83
Capacity	969	969	969	969	969	969	969	969	969	969	969	0
Surplus Places	193	185	161	164	197	175	173	207	195	228	258	83
Surplus Places %	19.92%	19.09%	16.62%	16.92%	20.33%	18.06%	17.82%	21.40%	20.13%	23.53%	26.62%	8.56%
Admission Number	166	166	166	166	166	166	166	166	166	166	166	0
	Year 7 transfers in to the school from a nearby school forecasted to exceed their admission number											0
	Year 7 transfers out of the school to a nearby school as admission number forecasted to be exceeded											0



September 2025

Flintshire County Council School Admissions has announced that as of the current publication date, 103 Year 7 class places have been assigned for September 2025, under the anticipated figure of 131. Together these statistics reflect a decreasing number at St Richard Gwyn and significant surplus places compared to capacity.

C.6. Quality of Education Provision

Quality and standards in schools in Flintshire are monitored by Estyn and the Council. Estyn is the office of His Majesty's Chief Inspector of Education and Training in Wales. It is a Crown body, established under the Education Act 1992. Estyn is independent of the Senedd but receives its funding from the Welsh Government under Section 104 of the Government of Wales Act 1998. Estyn inspects quality and standards in education and training providers in Wales.

Comments on the curriculum provision of the four schools, taken from their most recent Estyn inspection reports, are shown below. Also within each school section is a link to the report and a summary of any recommendations.

C.6.i. St Anthony's Catholic Voluntary Aided Primary School, Saltney

January 2019

"There is an effective working relationship between adults and pupils, which supports a purposeful learning environment. Teachers prepare effective lessons and activities flow well. They explain new ideas carefully and extend pupils' learning through practical experiences well. They ask probing questions to broaden pupils' understanding and encourage them to use their thinking skills throughout the lesson. Support staff make a positive contribution to the quality of pupils' learning."

The full report can be found here:

<https://estyn.gov.wales/system/files/2021-08/Inspection%20report%20St%20Anthony%27s%20R.C.%20Primary%20School%202019.pdf>

Recommendations

- Improve standards in Welsh as a second language across the school.
- Improve attendance overall.
- Provide more opportunities for pupils in key stage 2 to take responsibility for their own learning in order to develop as independent learners.
- Provide more opportunities for pupils to develop their numeracy and information and communication technology (ICT) skills across different areas of learning.

C.6.ii. St David's Catholic Voluntary Aided Primary School, Mold

March 2020

"Teachers and support staff work well together to plan and deliver a wide range of learning experiences that engage most pupils' interest effectively. They know the pupils well and give them effective support while they work and interact with other pupils. This has a positive effect on pupils' standards and wellbeing. Teachers have up-to-date subject knowledge and use a suitable variety of effective teaching methods that motivate pupils to learn. Support staff work alongside teachers skilfully and contribute effectively to pupils' learning"

The full report can be found here:

https://estyn.gov.wales/system/files/2022-01/St%20David%2527s%20Catholic%20Primary%20School_1.pdf

Recommendations

- Challenge all pupils in key stage 2 to improve and to guide their own learning in order to achieve to the best of their ability.
- Sharpen monitoring procedures so that they focus more clearly on pupil outcomes.
- Ensure that all processes relating to the provision for pupils with special educational needs are robust and give a clear overview of pupils' progress.
- Improve the quality of pupils' extended writing in key stage 2.

C.6.iii. St Mary's Catholic Voluntary Aided Primary School, Flint

February 2018

"Overall, the quality of teaching at the school is good. All staff know their pupils well and many respond sensitively to the needs and interests of individuals. Most staff manage pupils' behaviour well. Many teaching assistants know when to intervene and provide effective support to individuals and groups of pupils, particularly those pupils who have English as an additional language."

The full report can be found here:

https://estyn.gov.wales/system/files/2020-08/St%20Mary%2527s%20R.C.%20Primary%20School_3.pdf

Recommendations

- Plan for pupils to have more opportunities to develop their ICT skills.
- Improve links between self-evaluation and school development plans.
- Comply with Welsh Government guidance when planning spending of specific grants.
- Plan opportunities to develop pupils' independent learning skills.
- Improve processes to monitor attendance.
- Address the safeguarding issue identified during the inspection.

C.6.iv. St Richard Gwyn Catholic Voluntary Aided Secondary School, Flint

April 2024

“Most teachers establish positive and purposeful relationships with pupils to support their learning. They know their pupils well and maintain caring learning environments. Many teachers have well-established routines for the start of lessons. They explain the learning intentions clearly and use frequent questioning to check that pupils understand. These teachers are good language models and ensure that pupils know what they must do. They have good subject knowledge and use praise judiciously to encourage learning. A minority of teachers are particularly enthusiastic and share their passion for their subject. They provide clear explanations of concepts, model expectations for learning well and provide useful verbal feedback on how to improve.”

The full report can be found here:

<https://estyn.gov.wales/app/uploads/2024/07/Inspection-report-St-Richard-Gwyn-Roman-Catholic-High-School-2024-1.pdf>

Recommendations

- Improve the quality of teaching to improve engagement and pupils' progress in learning to address the shortcomings identified in the report.
- Ensure that self-evaluation and improvement processes focus more precisely on improving teaching and its impact on pupils' progress.
- Develop a strategic approach to planning, evaluating and improving the progressive development of pupils' skills for all pupils.
- Ensure that all pupils have full access to provision to develop their Welsh language skills.

PART D. THE PROPOSAL

D.1. What is being proposed?

The proposal put forward by the Diocese provided the Council with an opportunity to review the Catholic education provision in Flintshire.

It is proposed to:

- Close St Anthony's Catholic VA Primary School in Saltney, which will cease to operate by 31 August 2026.
- Amalgamate St David's Catholic VA Primary School in Mold, St Mary's Catholic VA Primary School in Flint and St Richard Gwyn Catholic VA High School in Flint.
- Amalgamation would see the individual schools close by 31 August 2026 and a new amalgamated English medium 3-18 Catholic Voluntary Aided school, with a new name and school number, opened in September 2026, operating over the three current sites.
- Move the new school to the new buildings from 01 September 2029.

D.2. What will the proposal provide?

The proposal will be facilitated by a capital build project, which will be delivered through the Council's Capital Development Programme.

This project will:

- Construct a new 3-18 English medium Catholic voluntary aided school in Flint, on the adjoining sites that currently have St Mary's and St Richard Gwyn on them.
- The overall capacity of the school will be for 1185 pupils.
- Capacity will be divided between 315 full-time primary pupil places and 750 secondary full-time pupil places. Sixth-form accommodation will be provided for 120 part-time pupils.
- Nursery accommodation will be provided for 45 part-time pupils.

D.3. When will the proposal be effective?

It is anticipated that a final decision whether or not to proceed with the proposal, should it get to this point, would be taken in early 2026. If the proposal is to be implemented, immediately after the final decision will see a period of design development begin.

During this process St Anthony's is proposed to close by 31 August 2026.

A new amalgamated school will open 01 September 2026.

Construction on the new school would commence in early 2027 and be completed by August 2029.

D.4. Cost of the Proposal

The project will require an estimated capital investment of £55,000,000. Financing this has been made possible by the Council's capital borrowing and from Welsh Government's Sustainable Communities for Learning funding.

The Welsh Government's Sustainable Communities for Learning funding programme aims to:

- improve the quality of school buildings.
- ensure places are available to serve local pupil demand.
- reduce surplus capacity.
- reduce running costs.
- promote sustainability.

Under Welsh Government Sustainable Community for Learning funding conditions, Welsh Government will contribute 85% of the total project costs, with the remaining 15% funded by Council capital borrowing.

One of the drivers for the proposal is equality of funding for pupils and through the closing of four schools and opening of a new 3-18 school the cost per pupil for the Catholic education provision will be rationalised.

As part of the Council's funding formula, schools are funded on the number of pupils and on other non-teaching costs. The new school will be funded using this formula, with a single budget that will be smaller than the budget of operating as four separate schools.

In Flintshire, the average primary school budget cost per pupil in 2025 / 2026 is £5,667.

Budgets and cost per pupils for the individual schools during the same period are as follows:

- The revenue allocation for St Anthony's is £433,628 with a budget share per pupil figure of £6,107.
- The revenue allocation for St David's is £450,633 with a budget share per pupil figure of £6,008.
- The revenue allocation for St Mary's is £1,141,631 with a budget share per pupil figure of £4,468.

In Flintshire, the average secondary school budget cost per pupil in 2025 / 2026 is £6,041.

- The revenue allocation for St Richard Gwyn during the same period is £4,495,115 with a budget share per pupil figure of £5,661.

Revenue costs have been calculated for the proposed new school based on the 2025/26 School Funding Formula.

Based on existing pupil numbers

• Estimated Primary Numbers on Roll:	301* plus 45 Nursery
• Estimated Primary Budget Allocation:	£ £1,149,912
• Estimated Allocation per Primary Pupil:	£ £4,796
• Estimated Secondary Numbers on Roll:	794
• Estimated Secondary Budget Allocation:	£3,258,803
• Estimated Allocation per Secondary Pupil:	£5,661

Based on Proposed Capacity of New School

• Estimated Primary Numbers on Roll	315 plus 45 Nursery
• Estimated Primary Budget Allocation:	£1,195,964
• Estimated Allocation per Primary Pupil:	£4,744
• Estimated Secondary Numbers on Roll	870
• Estimated Secondary Budget Allocation:	£3,443,644
• Estimated Allocation per Secondary Pupil:	£5,406

D.5. Options Considered

In total, 6 options were considered before the preferred option was identified. The advantages and disadvantages of each option formed the basis of each outcome and the eventual identification of the preferred option.

Option 1 - Maintain the Status Quo	
Allow all Catholic schools to continue without any intervention.	
Advantages	Disadvantages
<ul style="list-style-type: none"> • Requires no investment • All schools retained in their respective communities • No disruption to pupils 	<ul style="list-style-type: none"> • Does not address maintenance issues • Does not address high numbers of surplus places • Does not provide a sustainable long-term solution • Does not contribute to FCC Carbon Reduction Strategy • No appetite to do nothing
Outcome – Option Discounted	

Option 2 – Do Minimum	
Address all backlog maintenance issues at all schools.	
Advantages	Disadvantages
<ul style="list-style-type: none"> • Requires relatively minor investment • Backlog maintenance issues addressed • All schools retained in their respective communities • No disruption to pupils 	<ul style="list-style-type: none"> • Does not address high numbers of surplus places • Does not provide a sustainable long-term solution • Does not contribute to FCC Carbon Reduction Strategy
Outcome – Option Discounted	

Option 3 - New 3-18 Catholic School in Flint (2 schools)	
<p>Amalgamate St Mary's and St Richard Gwyn</p> <p>Inject significant investment into the Flint site (either a completely new build or extensive remodelling/ refurbishment)</p> <p>Retain St Anthony's, St David's, St Winefride's and Venerable Edward Morgan</p>	
Advantages	Disadvantages
<ul style="list-style-type: none"> • Through school experience for Flint pupils, easing transition • Shared leadership and governance • Through school development and curriculum with shared expertise • Four primary schools retained in their respective communities • Minimal disruption to pupils 	<ul style="list-style-type: none"> • Considerable financial investment required • Does not address maintenance issues at four other primary schools • Does not significantly address high numbers of surplus places • Does not provide a sustainable long-term solution • Does not contribute to FCC Carbon Reduction Strategy
Outcome – Option Discounted	

Option 4 - New 3-18 Catholic School in Flint (4 schools)	
<p>Close St Anthony's, St David's, St Mary's and St Richard Gwyn</p> <p>Construction of a purpose built new 3-18 school in Flint</p> <p>Retain St Winefride's and Venerable Edward Morgan</p>	
Advantages	Disadvantages
<ul style="list-style-type: none"> • New, modern facilities designed for a contemporary curriculum • Net zero carbon building(s) • Significantly reduces maintenance issues and cost across the Catholic sector • Through school experience for Flint pupils, easing transition • Through school development and curriculum with shared expertise • Shared leadership and governance • Potential for greater staff development opportunities • Significant reduction in surplus places • Sustainable long-term solution • Two primary schools retained in their respective communities 	<ul style="list-style-type: none"> • Considerable financial investment required • Does not address maintenance issues at two other primary schools • Removes two schools from their local communities • Increased journey times for pupils at, and those who would have attended, St Anthony's and St David's to their next nearest Catholic primary school • Potential increase in transportation costs • Potential loss of pupils who are currently attending, or would potentially attend, St Anthony's and St David's to non-Catholic alternatives • Potential loss of employment opportunities in Saltney and Mold areas • Loss of historical school settings
Outcome – Option Preferred	

Option 5 - New 3-18 Catholic School in Flint (6 schools)	
<p>Close St Anthony's, St David's, St Mary's, St Winefride's, Venerable Edward Morgan and St Richard Gwyn</p> <p>Construction of a purpose built new 3-18 school in Flint</p>	
Advantages	Disadvantages
<ul style="list-style-type: none"> • New, modern facilities designed for a contemporary curriculum • Net zero carbon building(s) • One centralised Catholic provision • Removes maintenance issues and cost across the Catholic sector • Through school experience for Flint pupils, easing transition • Through school development and curriculum with shared expertise • Shared leadership and governance • Potential for greater staff development opportunities • Significant reduction in surplus places • Sustainable long-term solution 	<ul style="list-style-type: none"> • Considerable financial investment required • Removes four schools from their local communities • Increased journey times for pupils at, and those who would have attended, St Anthony's, St David's, St Winefride's and Venerable Edward Morgan to their next nearest Catholic primary school • Potential increase in transportation costs • Potential loss of pupils who are currently attending, or would potentially attend, St Anthony's, St David's, St Winefride's and Venerable Edward Morgan to non-Catholic alternatives • Potential loss of employment opportunities in Saltney, Mold, Holywell and Shotton areas • Loss of historical school settings
Outcome – Option Discounted	

Option 6 - New 3-18 Catholic School in Flint (4 schools) and Federation (2 schools)	
<p>Close St Anthony's, St David's, St Mary's and St Richard Gwyn</p> <p>Construction of a purpose built new 3-18 school in Flint</p> <p>Federate St Winefride's and Venerable Edward Morgan</p>	
Advantages	Disadvantages
<ul style="list-style-type: none"> • New, modern facilities designed for a contemporary curriculum • Net zero carbon building(s) • Significantly reduces maintenance issues and cost across the Catholic sector • Through school experience for Flint pupils, easing transition • Through school development and curriculum with shared expertise • Shared leadership and governance • Potential for greater staff development opportunities • Significant reduction in surplus places • Sustainable long-term solution • Two primary schools retained in their respective communities • Two primary schools retain their individual identities • Federation provides shared vision, resources, policies, governance across two schools 	<ul style="list-style-type: none"> • Considerable financial investment required • Does not address maintenance issues at two other primary schools • Removes two schools from their local communities • Increased journey times for pupils at, and those who would have attended, St Anthony's and St David's to their next nearest Catholic primary school • Potential increase in transportation costs • Potential loss of pupils who are currently attending, or would potentially attend, St Anthony's and St David's to non-Catholic alternatives • Potential loss of employment opportunities in Saltney and Mold areas • Approximately 10 miles between federated sites which may reduce any potential positive impacts • Loss of historical school settings
Outcome – Option Discounted	

D.6. What will the preferred proposal achieve?

If implemented, the proposal will significantly reduce the large number of surplus primary school places in the Catholic education provision, reduce running costs whilst providing a new modern learning environment fit for purpose and to enhance learning opportunities for children.

PART E. LIKELY IMPACTS OF THE PROPOSAL

Outlined below are key impacts that are anticipated should the Proposal be implemented.

E.1. Impact on Estyn Education Provision Areas

E.1.i. Standards

The new state-of-the-art school facilities will enable the teaching staff to deliver enhanced educational provision, subsequently improving learning opportunities for the students.

E.1.ii. Wellbeing and attitudes to learning

The construction of a state-of-the-art school facility will enhance the wellbeing of both staff and students by providing access to resources and amenities that will improve educational provision and foster more positive attitudes towards learning.

The new school's design will incorporate input from the school's stakeholders to ensure it aligns with the school's curriculum vision and overall ethos, thereby maximising its positive impact on student wellbeing and learning engagement.

E.1.iii. Teaching and learning experiences

The new school will provide pupils and staff with enhanced access to resources and facilities, thereby improving the overall teaching and learning experience. Additionally, the school will offer greater opportunities for professional development and a broader range of curricular activities.

E.1.iv. Care, support and guidance

The inclusive and nurturing learning environments of the current schools will be transitioned to the new school, accompanied by their respective teaching staff. The new school's enhanced facilities will provide greater resources and improved amenities to better support the learners.

E.1.v. Leadership & Management

The new school's leadership will be strengthened by the exchange of best practices between current school leaders and their accumulated experience. Furthermore, structures will be developed to offer a broader range of opportunities for both staff and students. As a result, students will benefit from enhanced learning opportunities and a wider scope of curricular activities.

E.2. Impact on the Local Environment

During the design development phase traffic impacts of constructing the new school will be assessed and any anticipated negative consequences will be removed or reduced to ensure minimal impact.

Safe routes to school and active travel arrangements will be considered in partnership with colleagues in Planning and Streetscene Teams. A coherent travel strategy and school travel plan will be put in place to promote ecologically friendly travel choices.

The removal of four buildings and a school built to a Net Zero Carbon in Operation (NZCio) standard would remove emissions from the Council's carbon footprint by incorporating renewable energy systems and natural ventilation and shading.

E.3. Impact on Admissions

Admission arrangements for the new school will be determined and administered by the new governing body. This approach is used by the governing bodies of the four current schools and will not change following implementation.

There will be sufficient spaces available for pupils on roll at St Anthony's and St David's to transfer to an alternative Catholic school, irrespective of their residence.

E.4. Impact on Home to School Transport

The Council is required to determine whether the provision of transport for pupils of statutory school age is necessary to facilitate the attendance at a designated school of the pupil concerned. If such transport is deemed necessary, then the transport must be provided free of charge.

The Council provides free transport for children of compulsory school age (i.e. 5-16yrs) as follows:

- where a child receiving primary education lives over two miles from the nearest appropriate school
- where a child receiving secondary education lives over three miles from the nearest appropriate school.

In addition to its statutory obligations, the Council also provides free transport for pupils of statutory age to the nearest voluntary aided school where the admission to the school is on denominational grounds, subject to the distance criteria.

The full Transport Policy can be found via the following link:

<https://www.flintshire.gov.uk/en/Resident/Schools/School-Transport-Application.aspx>

A Transport Impact Assessment has concluded that closing St Anthony's and St David's (site) would:

- Significantly increase average walking distances for pupils at these school to their alternative Catholic primary school.
- Significantly increase journey times for pupils at these school to get to their alternative Catholic primary school.
- increase costs to the Council to provide transport for all pupils at these school to get to their alternative Catholic primary school (actual costs cannot be determined).

The full Transport Impact Assessment can be found here:

<https://flintshire.gov.uk/CatholicEducationConsultation>

E.5. Impact on Transfer to Secondary Schools

There will be no change to the current transfer arrangements for pupils in respect of secondary education. The transition arrangements for primary school pupils in Flint should be improved due to being part of the 3-18 school.

E.6. Impact on Additional Learning Needs (ALN) Pupils

Those pupils with ALN will lose access to provision offered in the Saltney and Mold areas. However, the ALN provision in the new school will be considered during the design development process and will likely be enhanced beyond the current offering in Flint with new state-of-the-art facilities and additional resources available.

E.7. Impact on Governance Arrangements

During design development representatives from the governing bodies of the Flint schools will form a 'shadow' governing body / working group to contribute to the facilities at the new school. Approaching the completion of the new school the 'shadow' governing body / a new governing body will be established.

E.8. Impact on Staffing

Staffing requirements at a school are derived from the number of pupils at a school. Therefore, if all the pupils are retained within Flintshire's Catholic education provision, overall staffing numbers may not change that much.

However, what the proposal will impact is the location where jobs are available. Opportunities to work in Saltney and Mold will be removed but there could be additional opportunities created in Flint, Shotton and Holywell, depending upon where pupils migrate to.

Staff will be supported through any changes by the Council's Employment Services teams.

The Proposal may also present more and higher quality professional development opportunities for staff where more senior leadership posts may be available to facilitate career progression.

E.9. Impact on Other Schools

The Code states that impacts on schools likely to be affected by a proposal should also be considered. There is/are no criteria set out in the Code to determine a school that will "likely be affected" by a proposal. Therefore, the Council usually compares schools of same type and language relatively close to the main school(s).

As there are only two other Catholic schools in Flintshire, consideration has been given to whether either would 'likely be affected'. St Winefride's Catholic Voluntary Aided Primary School in Holywell is not likely to be significantly impact by the Proposal due to the home location of pupils currently attending St Anthony's and St David's.

However, for the majority current pupils attending St Anthony's, should the school close, their next nearest Catholic primary school would be Venerable Edward Morgan Catholic Voluntary Aided Primary School in Shotton. Therefore, it is reasonable to determine that Venerable Edward Morgan is likely to be affected by the Proposal.

If all pupils currently attending St Anthony's transferred to Venerable Edward Morgan then numbers on roll at the school would increase from 167 (September 2024) to 229. The school has capacity to accommodate 281 full-time pupils and would see surplus places reduce from 114 to 52. This potential impact is something that will be monitored closely and, if necessary, a review of accommodation at the school will be undertaken to identify ways to minimise the impact of any additional pupils received.

Full information for Venerable Edward Morgan is shown below.

E.9.i. Venerable Edward Morgan Catholic Primary School, Shotton

E.9.i.a. Current Position

Location of the School		Caernarfon Close, Shotton CH5 1AR	
Age Range		3-11	
School Category		Voluntary Aided	
Language Medium Category		English medium	
Faith denomination		Catholic	
		Reception – Year 6	Nursery
Number of pupils on the school register	September 2020	201	18
	September 2021	196	12
	September 2022	184	17
	September 2023	165	23
	September 2024	167	19
Capacity	September 2024	281	16
Surplus Places	September 2024	114	-3
Pupil Forecasts	September 2025	157	21
	September 2026	151	22
	September 2027	146	21
	September 2028	141	22
	September 2029	149	22
Building Condition Category	Condition C - Poor Exhibiting major defects and/or not operating as intended.		
Building Suitability	B - Satisfactory Performing as intended but does not support the Curriculum in some areas		
Cost to Resolve Condition Issues	£305,600 This is exclusive of any applicable fees, preliminaries, and VAT.		

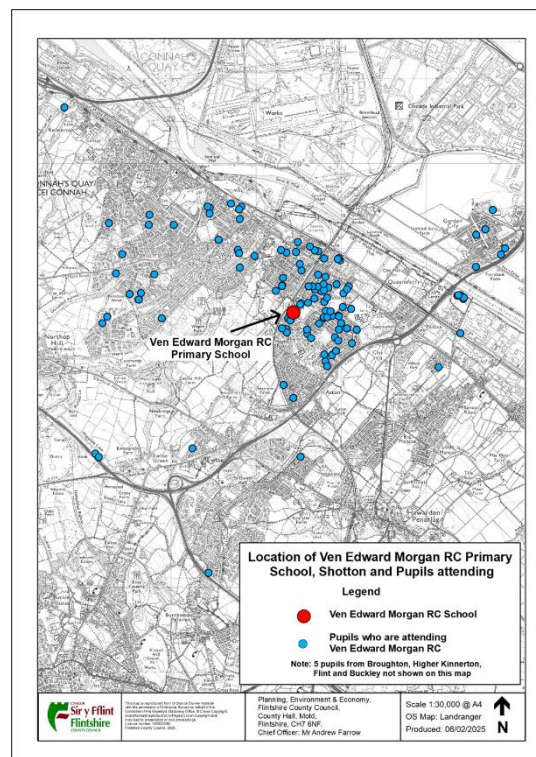
E.9.i.b. School Location

Shotton is a town consisting of two electoral wards of Flintshire, situated north east of Mold. The resident population two wards, as measured in the 2021 census, was 6,499.

E.9.i.c. Demographical Information

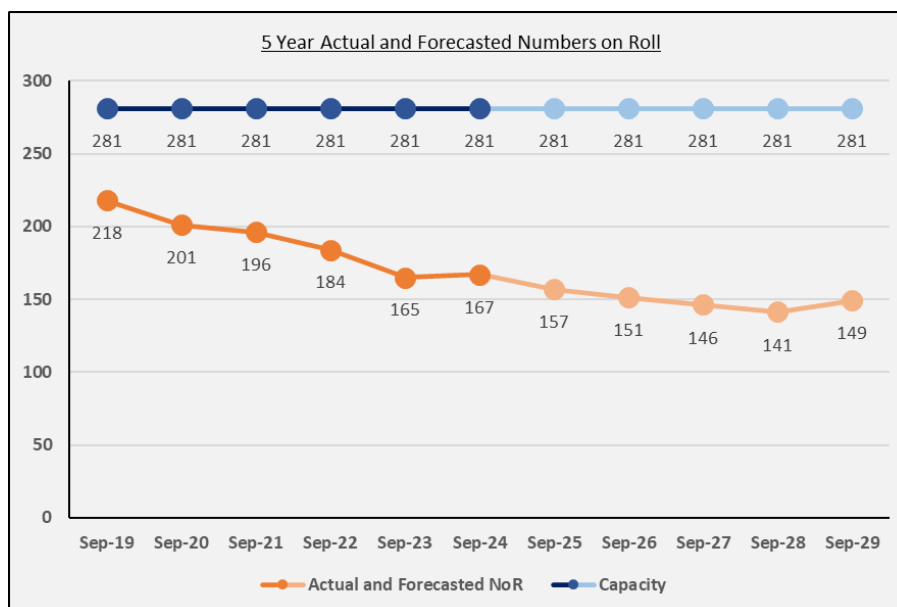
Demographical analysis (as at September 2024) has shown that 94.64% of pupils attending Venerable Edward Morgan are attending their nearest English-medium voluntary aided Catholic primary school.

Map of locations of pupils attending Venerable Edward Morgan.



E.9.i.d. Pupil Forecasts

	ACTUAL					LATEST DATA	FORECAST					
Year Group	Sep-19	Sep-20	Sep-21	Sep-22	Sep-23	Sep-24	Sep-25	Sep-26	Sep-27	Sep-28	Sep-29	5 Year Trend
Nursery	19	18	12	17	23	19	21	22	21	22	22	3
Reception	27	22	25	15	15	26	19	21	22	21	22	-4
Year 1	26	24	22	24	14	18	26	19	21	22	21	3
Year 2	28	26	25	23	24	14	18	26	19	21	22	8
Year 3	38	29	29	25	26	26	14	18	26	19	21	-5
Year 4	24	41	30	29	25	27	26	14	18	26	19	-8
Year 5	35	24	37	30	30	27	27	26	14	18	26	-1
Year 6	40	35	28	38	31	29	27	27	26	14	18	-11
Total	218	201	196	184	165	167	157	151	146	141	149	-18
Capacity	281	281	281	281	281	281	281	281	281	281	281	0
Surplus Places	63	80	85	97	116	114	124	130	135	140	132	18
Surplus Places %	22.42%	28.47%	30.25%	34.52%	41.28%	40.57%	44.13%	46.26%	48.04%	49.82%	46.98%	6.41%
Admission Number	40	40	40	40	40	40	40	40	40	40	40	0
	Reception transfers in to the school from a nearby school forecasted to exceed their admission number											0
	Reception transfers out of the school to a nearby school as admission number forecasted to be exceeded											0



E.9.i.e. Quality of Education Provision

February 2025

“The Venerable Edward Morgan Roman Catholic Primary School is a happy, caring and inclusive school. Staff work together to create a purposeful learning environment for all pupils, where they feel safe and know that adults will support them if they have any worries or concerns. During their time in the school, most pupils make good progress from their starting points, including those with additional learning needs (ALN) and those who are eligible for free school meals.”

The full report can be found here:

<https://estyn.gov.wales/app/uploads/2025/03/Inspection-report-Ven.-Edward-Morgan-R.C.-Primary-School-2025.pdf>

Recommendations

- Increase opportunities for older pupils to develop their independence skills
- Continue to improve attendance and reduce levels of persistent absence

E.10. Risks of the Proposal

Key risks of the proposal include:

RISK	POTENTIAL MITIGATION
The consultation may uncover an alternative approach which could offer a long-term solution to safeguard the Catholic education sector in Flintshire	Any alternative approach will be assessed to determine its viability. Once established a decision will be taken to either continue with this proposal or pursue the alternative.
Overall affordability of the project	The affordability of the project is under constant review. The Council constantly monitors costs of project to ensure they remain within budget. Any significant increases in costs will result in a pause of the project in order to review causes and identify potential solutions.
85% of funding is to be obtained from Welsh Government but there is no guarantee that any funding application will be successful	Without this funding the proposal cannot be implemented.
The remaining 15% funding requirement is to be provided by the Council which has significant financial pressures, as do all local authorities	The proposed scope of the project and outline design has been commercially assessed and is considered affordable within the Flintshire County Council capital programme envelope.
Increased pupil transport costs for the Council	Possible revision of school transport policy may be required
The estimated completion date may not be met	The anticipated timeline is a guide and is subject to various stages that mean the proposal may take longer to deliver. However, with extensive previous experience delivering similar projects the timeline is viewed as realistic.
Loss of pupils to non-Catholic provision due to uncertainty of the future offering	The proposed Catholic provision will have sufficient space to accommodate all current pupil numbers on roll.
Possible resistance to or disengagement with the change process amongst stakeholders	Presentation of clear information and data to allow stakeholders to fully participate in the consultation process.

E.11. Integrated Impact Assessment

An integrated impact assessment has been conducted for this proposal and is available on the Council website.

<https://flintshire.gov.uk/CatholicEducationConsultation>

E.12. Impact on Welsh Language Provision

This proposal will not support the Council's objectives under its Welsh in Education Strategic Plan (WESP). The Council has made a significant investment in Welsh-medium education since 2020, with over £20m being used on a new primary school, extensions to another and refurbishment of another. In addition, funding has delivered a number of Welsh-medium childcare settings to provide access to the Welsh language at an early age.

It is anticipated that the proposal would not negatively impact the Welsh language provision within the County as the number of full-time Welsh-medium pupil places will be unaffected. Whilst the Council supports the drive to increase the number of Welsh speakers, it also has a responsibility to provide high quality opportunities for non-Welsh speaking pupils too.

E.13. Building Impacts

The futures of the sites at Saltney and Mold are yet to be determined and will be managed in accordance with the agreed Council Policy on Surplus Land and Buildings.

E.14. Interim Arrangements

Although the new school would be constructed on the same site as St Mary's and St Richard Gwyn, the site is big enough to allow construction to happen whilst the two schools remain in operation. Therefore, implementation of the proposal will not require any interim arrangements.