

Notice of Proposal

THE FLINTSHIRE COUNTY COUNCIL (OFF-STREET PARKING PLACES) ORDERS

Notice is hereby given that Flintshire County Council (“the Council”) propose to make Orders in exercise of its powers under the Road Traffic Regulation Act 1984 as amended (‘the 1984 Act’) and The Traffic Management Act 2004 (“the 2004 act”) and of all other enabling powers, and after consultation with the Chief Officer of Police in accordance with Part III of Schedule 9 to the 1984 Act, the effect of which will be to amend :-

- The Flintshire County Council (Off-Street Parking Places – Connah’s Quay) (Revocation) Order 2018
- The Flintshire County Council (Off-Street Parking Places – Holywell) (Revocation) Order 2018
- The Flintshire County Council (Off-Street Parking Places – Queensferry) (Revocation) Order 2018
- The Flintshire County Council (Off-Street Parking Places – Flint) (Revocation) Order 2018
- The Flintshire County Council (Off-Street Parking Places – Mold) (Civil Enforcement) Order 2018
- The Flintshire County Council (Off-Street Parking Places – Buckley) (Revocation) Order 2018
- The Flintshire County Council (Off-Street Parking Places – Tŷ Dewi Sant, Ewloe) (Civil Enforcement) Order 2019
- The Flintshire County Council (Off-Street Parking Places – Buckley) (Amendment) Order 2020

so as to:-

1. Amend the provisions of the use of Electric Vehicle Parking Places and introduce overnight charging.
2. Introduce cashless payments options

And amend:

- The Flintshire County Council (Off-Street Parking Places – Shotton) (Revocation) Order 2018

so as to:-

1. Amend the provisions of the use of Electric Vehicle Parking Places and introduce overnight charging.
2. Introduce cashless payments options
3. The area known as King George Street Car Park shown in Schedule 2 of this Order shall now be known as Charmleys Lane Car Park in Schedule 2A of this Order.

In all other respects the present provisions of the above Orders will remain in force.

And revoke:

- The Flintshire County Council (Off-Street Parking Places – Talacre) Order 2015
- The Flintshire County Council (Off-Street Parking Places – Talacre) (Amendment No 1) Order 2016

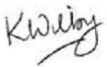
so as to:-

1. Be consistent with the Car Park Orders as above and also
2. Introduce the provisions of the use of Electric Vehicle Parking Places
3. Introduce cashless payments options

In the interests of safety during the COVID-19 Pandemic, should you wish to view a copy of this Notice, the proposed Order, plans and a statement of the Council's reasons for proposing to make the Orders it is advisable that you view them on our website at www.Flintshire.gov.uk > Resident > Roads, Streets and Travel > Traffic Regulation Orders or you can request a copy of the documents by emailing Streetscene@flintshire.gov.uk or calling 01352701234.

If you wish to object to or make representations relating to the proposed Order you may do so in writing, setting out the grounds on which they are made to Katie Wilby, Chief Officer (Streetscene and Transportation), Flintshire County Council, County Hall, Mold, Flintshire. CH7 6NR, quoting reference PS/OFS-AMENDMENT ORDERS/JB or emailed to: Parkingservices@flintshire.gov.uk (Emails sent to any other address will not be looked at), by Friday 18th March 2022

Date: Friday 25th February 2022



Katie Wilby,
Chief Officer (Streetscene and Transportation),
County Hall,
Mold,
Flintshire,
CH7 6NR

DATED

15TH

MAY

2018

**THE FLINTSHIRE COUNTY COUNCIL
(OFF-STREET PARKING PLACES – HOLYWELL)
(REVOCACTION) ORDER 2018**

**Steve Jones,
Chief Officer
(Streetscene & Transportation),
County Hall,
Mold,
Flintshire,
CH7 6NF**

THE FLINTSHIRE COUNTY COUNCIL
(OFF-STREET PARKING PLACES – HOLYWELL)
(REVOCAATION) ORDER 2018

Flintshire County Council (hereinafter called “the Council”) in exercise of its powers under Sections 32, 33, 34 and 35 and Part IV of Schedule 9 of the Road Traffic Regulation Act 1984 as amended (“the 1984 Act”), the Traffic management Act 2004 (“the 2004 Act”) and of all other enabling powers, and after consultation with the Chief Officer of Police in accordance with Part III of Schedule 9 to the 1984 Act hereby makes the following Order:

Commencement and Citation

1. This Order shall come into operation on 21st May 2018 and may be cited as The Flintshire County Council (Off-Street Parking Places – Holywell) (Revocation) Order 2018.

Interpretation

2. In this Order, except where the context otherwise requires, the following expressions have the following meanings:

“agent” is any person appointed by the Council to carry out its duties on its behalf;

“bus” shall have the same meaning as in the Traffic Signs Regulations and General Directions 2016;

“civil enforcement officer” means a person employed in accordance with Section 76 of the 2004 Act to carry out the functions thereof;

“Council” means Flintshire County Council or its successor authority;

“disabled person’s vehicle” means a vehicle which lawfully displays in the relevant position a disabled person’s badge issued in accordance with the provisions of the being a vehicle which, immediately before or after any period of waiting, issued in accordance with the Disabled Persons (Badges for Motor Vehicles) (Wales) Regulations 2000 has been immediately before or after any period of waiting, or is being used for carrying disabled persons.

“disabled person’s badge” has the same meaning as in the Disabled Persons (Badges for Motor Vehicles) (Wales) Regulations 2000;

“driver” in relation to a vehicle waiting in off street parking place means the person driving the vehicle at the time it was left in the said parking place;

“electric vehicle” means a vehicle in which the electrical motive power is derived from an internal electrical storage battery that can be plugged into mains electricity for the purpose of recharging the said battery and shall include any vehicle that is so powered in part by such a battery, including plug-in hybrid and extended range electric vehicles;

“electric vehicle recharging point” means equipment situated adjacent to an electric vehicle recharging parking bay that supplies electric energy for recharging the battery of electric vehicles via connection to an electric cable;

“electric vehicle recharging parking bay” means a parking bay that is provided by this Order and subject to the provisions of this Order for the sole use of an electric vehicle whilst recharging;

“recharging” in relation to an electric vehicle means an electric vehicle which is connected by electric cable to an electric vehicle recharging point situated adjacent to an electric vehicle recharging bay for the purpose of recharging the battery of the electric vehicle;

“loading/unloading” refers to when a vehicle is parked wholly within a bay marked for that purpose, within a parking place, for the purpose of delivering or collecting goods or merchandise or loading or unloading the vehicle at premises adjacent to the parking place or bay and the vehicle does not park for more than twenty minutes or such longer period as a civil enforcement officer may authorise;

“motor cycle” refers to a solo motorcycle only and excludes any motor cycle which has a side-car or trailer, or which has more than two wheels;

“park” and “parked” refer to the stopping of a vehicle and it remaining at rest for some time whether or not the driver is still in the vehicle and a vehicle shall be deemed to be parked for any period in the same parking place or parking bay (as the case may be) if any part of it is below the vehicle or the vehicle’s load (if any) whether or not the vehicle is moved during that period;

“parking bay” means a space in the parking place, which is provided for the leaving of a vehicle of a class specified and indicated by markings on the surface or indicated by signs in accordance with the provisions of the Order;

“parking permit” means a season ticket, contract permit, business permit or staff permit of a type and design issued by the Council on such terms and conditions as it may determine, providing an entitlement to use of the parking place;

“permit holder” means the person to whom a parking permit has been issued under the provisions of this Order;

“parking ticket” means a ticket issued by a parking ticket meter pursuant to this Order and indicating the payment of the parking charge and the time when the parking period expires;

“parking charge” means the amount specified in column 8 of schedule 2 to this Order in relation to the parking place specified in column 1 of schedule 2 to this Order;

“parking period” in relation to the parking place specified in column 1 of schedule 2 to this Order means that period of time specified in column 5 of schedule 2 to this Order which corresponds to the amount of parking charge set out in column 8 of schedule 2 to the Order;

“parking ticket meter” means apparatus designed to display the time externally, to accept payment by drivers and to issue parking tickets indicating the payment of a parking charge and the date and parking period in respect of which has been paid;

“parking place” means the area of land specified by name in column 1 of schedule 2 to this Order and on the plans accompanying this Order;

“penalty charge” means the charge set by the Council under Section 77 of and Schedule 9 to the 2004 Act which is to be paid to the Council following the issue of a penalty charge notice;

“penalty charge notice” means a penalty charge notice issued or served by a civil enforcement officer pursuant to the provisions of the Civil Enforcement of Road Traffic Contraventions (General Provisions) (Wales) Regulations 2013;

“registered keeper” is the person for the time being registered with the Driver and Vehicle Licensing Agency as the person who is recorded as keeping the vehicle on the date on which the vehicle was parked in the parking place in question. The registered keeper is not necessarily the legal owner of the vehicle or the driver or user of the vehicle for the time being;

“vehicle” means a mechanically propelled vehicle constructed or adapted to carry not more than seven passengers exclusive of the driver, or any other vehicle the weight of which unladen does not exceed 3.5 tonnes and is not drawing a trailer.

3. For the purposes of this Order a vehicle shall be regarded as displaying:

(a) a disabled person’s badge in the relevant position if:

- (i) the badge is exhibited on the dashboard or fascia panel of the vehicle; or
- (ii) where the vehicle is not fitted with a dashboard or fascia, the badge is exhibited in a conspicuous position on the vehicle

so that the front of the badge is clearly legible from the outside of the vehicle.

(b) a parking ticket in the relevant position if:

- (i) the parking ticket is exhibited on the dashboard or fascia panel of the vehicle; or
- (ii) where the vehicle is not fitted with a dashboard or fascia, the parking ticket is exhibited in a conspicuous position on the vehicle

so that the front of the parking ticket is clearly legible from the outside of the vehicle.

(c) a parking permit in the relevant position if:

- (i) the parking permit is exhibited on the dashboard or fascia panel of the vehicle; or
- (ii) where the vehicle is not fitted with a dashboard or fascia, the parking permit is exhibited in a conspicuous position on the vehicle

so that the front of the parking permit is clearly legible from the outside of the vehicle.

4. Except where the context requires otherwise, any reference in this Order to a numbered Article or to the Schedule shall be construed as a reference to the Article bearing that number in, and to the Schedule to, this Order.

5. Any reference in this Order to any enactment shall be construed as a reference to that enactment as amended, applied, consolidated, re-enacted by or as having effect by virtue of any subsequent enactment.

6. Unless the context otherwise requires, words denoting the singular shall include the plural and vice versa and words denoting the persons shall include either gender, bodies corporate, unincorporated associations and partnerships.

7. The Interpretation Act 1978 shall apply for the interpretation of this Order.

Designation of Parking Places

8. The parking Places specified in column 1 of schedule 2 to this Order may be used, subject to the provisions of this Order, as a place to park vehicles of such classes in column 3 of schedule 2 to this Order in such positions in column 4, on such days and hours in column 5 and for such periods in column 6 as are specified in relation to the Parking Place in schedule 2.

Exemptions from Parking Charge

9. Within the parking places specified in column 1 of schedule 2 to this Order where parking charges or permits are specified in column 8 and column 9 of schedule 2 to this Order, no person shall, except upon the direction or permission of a police constable in uniform or civil enforcement officer, cause or permit any vehicle to wait in the parking places specified in column 1 of schedule 2 to this Order unless that vehicle is displaying in the relevant position:

- (a) a valid parking ticket issued by a parking ticket meter in accordance with Article 45 of this Order; or
- (b) a valid parking permit issued by the Council for use in that parking place in accordance with the provisions of this Order; or
- (c) the vehicle is an electric vehicle parked within an electric vehicle recharging bay and recharging.

Vehicles which may use the Parking Places

10. No person shall cause or permit a vehicle to be parked in a parking bay unless it is specified in column 3 of schedule 2 to this Order.

11. Where at or near the entrance to the parking place there is a sign or surface marking which indicates that the parking place is available only to vehicles under a specified height, width, length or weight or only at certain times, no person shall cause or permit to enter the parking place any vehicle which exceeds that height, width, length or weight or outside those times.

Position of vehicle

12. If the limits of parking bays are marked out in the parking place in such a manner as the Council may determine by lines, studs or other indications, the driver of a vehicle shall ensure that it is not parked beyond the parking bay markings and shall not permit it to remain parked in the parking place unless it is so positioned.

13. If parking bays are not marked out in the parking place the driver of a vehicle shall ensure that it is parked so that it does not obstruct other vehicles using the parking place, the free flow of traffic circulating within the parking place, and the entrances to and exit from the parking place.

14. No person shall in the parking place, park the vehicle in such a manner or place where it causes an obstruction to any other users of Parking Place.

15. Any vehicle left in the parking place shall so stand that every part of the vehicle is within the limits of a parking bay, provided in the case of any parking place where the length of any vehicle precludes it from standing wholly within the limits of a parking bay, that vehicle shall so stand in the parking bay that as much of the vehicle as possible is within the limits of the bay and that such portion as is beyond the limits of the parking bay does not constitute a danger or obstruction to other users of the parking place.

16. Where a sign or surface marking at the parking place, or any bay within the parking place, is described as available for a vehicle or a specified class of vehicles to be parked in a specific location, no person shall cause or permit a vehicle to be parked in the parking place or in any parking bay within the parking place, unless it is of the specified class.

17. Where within the parking place, there is a sign or surface marking which indicates that a parking bay is available only for vehicles displaying a valid parking permit, the driver of the vehicle shall not permit the vehicle to wait in the parking bay unless it displays in the relevant position a valid parking permit.

18. Where within the parking place specified in column 1 of schedule 2 to this Order there is a sign or surface marking which indicates that a parking bay is available only for the recharging of electric vehicles the driver of a vehicle shall not permit the vehicle to wait in the electric vehicle recharging parking bay unless it is an electric vehicle and the said electric vehicle is recharging from an electric vehicle recharging point whilst in occupation of the electric vehicle recharging point

Disabled person's parking bays

19. No person shall cause or permit a vehicle to be parked in a parking bay with a surface marking or sign for disabled persons unless the vehicle displays a valid disabled person's badge in the relevant position and immediately before or immediately after the act of parking the vehicle has been or is about to be used by the person(s) in respect of whom the disabled person's badge has been issued.

Loading and unloading bays

20. No person shall cause or permit a vehicle to park in any area marked as a loading bay unless the vehicle is being used for the purpose of loading or unloading.

Motor cycle parking bays

21. No person shall cause or permit a vehicle to park in a parking bay marked for motor cycles unless the vehicle is a solo motor cycle.

Power to Close or Suspend the Parking Place

22. Nothing in this Order shall prevent the Council by notice, sign or barrier displayed or erected in the Parking Place:

(i) from closing the parking place or any part thereof for any period; and/or

(ii) from setting aside the parking place or any part or parts thereof on all days or on certain days or during certain parts of days for use only by particular vehicles or organisations.

(iii) No person shall cause or permit any vehicle to wait in any part of the parking place which has been suspended in accordance with the provisions of this Article except with the permission of a person authorised by the Council

23. On closing or suspending the use of the parking place or any part thereof the Council shall place or cause to be placed in or adjacent to the parking place or that part thereof a notice or traffic sign indicating that the parking place or that part thereof is closed or the use is suspended and that parking by vehicles is prohibited.

24. No person shall cause or permit a vehicle to be parked in the parking place or any part thereof during such periods that the parking place or that part thereof is closed or the use is suspended or during such period as there is in or adjacent thereto a notice or traffic sign indicating the closure or suspension placed by or on behalf of the Council, except without the permission of a person authorised by the Council.

Driving within the Parking Place

25. Where in the parking place signs have been erected or surface marking are laid for the purpose of indicating the entrance to or exit from the parking place, or indicating that a vehicle using the parking place shall proceed in a specified direction within the parking place no person shall drive or cause or permit to be driven any vehicle so that it enters the parking place otherwise than by an entrance or leaves the parking place otherwise than by an exit, so indicated, or proceeds in a direction other than so specified.

Restrictions of use of the Parking Places

26. When a vehicle has left the parking place after waiting therein, the driver thereof shall not within one hour after its leaving cause or permit it to wait again in the Parking Place.

27. No electric vehicle shall remain in an electric vehicle recharging parking bay within a parking place specified in column 1 of schedule 2 to this Order for a period in excess of 4 hours and such electric vehicles shall not be left again in an electric vehicle recharging parking bay in that parking place until 4 hours have elapsed from the time at which the said electric vehicle was taken away from that parking place.

Sale of Goods

28. No person shall in the parking place without the express written permission of the Council, use a vehicle in connection with the sale of any article, including the vehicle itself, to any person in or near

the parking place or in connection with the selling or offering for hire of skills or services in any other capacity.

Parked with engine running

29. The driver of a vehicle using the parking place shall stop the engine as soon as the vehicle is parked in a parking bay and shall not start the engine except when about to change the position of the vehicle or to depart from the parking place.

Domestic purposes

30. No person shall use any part of the parking place or any vehicle parked in the parking place for sleeping or camping or cooking.

31. No person shall use any part of the parking place for the purpose of servicing, washing or overhauling any vehicle or part thereof except such repairs as may be essential to enable the vehicle to depart from the parking place.

Behaviour

32. The driver of a vehicle using the parking place shall not sound any horn or other similar instrument except for the avoidance of danger when about to change the position of the vehicle in, or to depart from the parking place.

33. No person shall in the parking place shout or otherwise make any loud noise to the disturbance or annoyance of users of the parking place or residents premises in the neighbourhood.

34. No person shall in the parking place use any threatening, abusive or insulting language, gesture or conduct with intent to put any person in fear or so as to occasion a breach of the peace or whereby a breach of the peace is likely to be occasioned.

Other activities

35. No person shall in the parking place erect or cause or permit to be erected any tent, booth, stand or other structure without the written consent of the Council, or light or cause to light any fire.

Relocation, Removal and Disposal of Vehicles

Emergencies

36. An agent authorised by the Council or a police officer in uniform may, using such measures as are appropriate, move or cause to be moved in the case of an emergency to any place he/she thinks fit, any vehicle parked in the parking place.

Contraventions in Suspended Parking Place

37. An agent authorised by the Council may, using such measures as are appropriate, move or cause to be moved to any place he/she thinks fit, any vehicle parked in the parking place which has been

closed or suspended in whole or in part by the Council and the cost of movement or removal and safe keeping shall be the liability of the registered keeper of the vehicle.

Alteration of Position of Vehicle in Parking Places

38. Where any vehicle is standing in the parking place in contravention of the provisions of this Order an agent authorised by the Council may alter or cause to be altered the position of the vehicle in order that its position shall comply with those provisions and may recover any expenses associated with this alteration from the registered keeper of the vehicle.

Removal of Vehicles from Parking Places

39. Where an agent authorised by the Council is of the opinion that any of the provisions contained in this Order have been contravened or not complied with in respect of a vehicle left in the parking place, he may remove or cause to be removed the vehicle from the parking place. Any expenses incurred by the Council in removing any vehicle from the parking place shall be recoverable by the Council from the registered keeper of the vehicle.

40. An agent removing the vehicle or altering its position by virtue of Articles 37, 38 and 39 of this Order may do so by towing or driving the vehicle or in such other manner as he may think necessary and may take such measures in relation to the vehicle as he may think necessary to enable him to remove it or alter its position as the case may be.

Safe keeping

41. Any agent removing a vehicle from the parking place under the provisions of this Order shall make such arrangements as may be reasonably necessary to provide for the safe keeping of the vehicle.

Disposal of vehicles abandoned in a parking place

42. The Council may as respects to a vehicle which has been removed from a parking place in pursuance of Articles 37 and 39 of this Order, if it appears to them to have been abandoned, sell or otherwise dispose of, in accordance with current legislation.

Amount of Parking Charge at Parking Places

43. The parking charge for a vehicle left in the parking place during the chargeable hours shall be in accordance with the parking charges and parking period specified in column 8 of schedule 2 to this Order.

Payment of Parking Charge

44. Except as provided in Article 9 of this Order no person shall leave any vehicle in the parking place specified in column 1 of schedule 2 to this Order without having paid the parking charge in respect

of the parking period for which the vehicle has been left and without having displayed a parking ticket issued by a parking ticket meter in accordance with Article 45 to this Order.

PROVIDED that for the purposes of this Article if a vehicle when first placed in a parking place is exempt from payment of any charge by virtue of the provisions of Article 9 of this Order and continues to wait in that parking place otherwise in accordance with those provisions the parking charge shall be treated as having been incurred and to be payable at the time when the vehicle ceased to wait by virtue of those provisions and all the provisions of this Order shall then apply accordingly

Display of Parking Ticket issued by a Parking Ticket Meter

45. (1) Subject to Article 9 of this Order the parking charge shall be payable on the leaving of the vehicle in the parking place specified in column 1 of schedule 2 to this Order by: -

- (i) the insertion in a ticket parking meter of any combination of coins or notes of the denominations specified on the ticket parking meter together making up the amount of the parking charge for the parking period for which payment is being made and where more than one coin is required for the payment of that charge the coins shall be inserted in the ticket parking meter one immediately after the other; or
- (ii) by insertion in a ticket parking meter of an approved credit or debit card and making a payment up to the amount of the parking charge for the parking period for which payment is being made in accordance with the instructions set out either on screen or on the ticket parking meter.

(2) Where payment of the parking charge for a vehicle left in the parking place specified in column 1 of Schedule 2 of this Order has been made in accordance with the provisions of Article 43 the driver thereof shall display or cause to be displayed on the inside of the vehicle in accordance with the provisions of paragraph (3) of this Article the ticket issued by the parking meter on payment of the parking charge.

(3) The parking ticket referred to in Article 44 to this Order shall be displayed in the vehicle in respect of which it was issued at all times during which the vehicle is left during the permitted hours in the parking place so that all the particulars on that side of the ticket which bears the indication that a parking charge has been paid are readily visible from outside the vehicle.

(4) Tickets purchased are not transferable between vehicles and/or parking places.

Indications of Payment of Parking Charge

46. (1) Payment of the parking charge for a vehicle left in the parking place specified in column 1 of schedule 2 to this Order has been made in accordance with the provisions of Article 44 to this Order shall be indicated by the issue by a ticket parking meter of a ticket indicating that a parking charge has been paid and the day and time by which the parking period for which payment was made by the parking charge will expire and by the display of the ticket in the manner specified in Article 45 to this Order.

(2) Where the parking ticket indicates the day and time of expiry of the parking ticket the period for which the parking charge has been paid shall be deemed to have expired when the time shown on the clock on the ticket parking meter which issued the parking ticket is later than the time shown on the ticket.

(3) Where the parking ticket indicates the day and time of payment the period for which the parking charge has been paid shall be deemed to have expired when the time shown on the clock on the ticket parking meter which issued the parking ticket exceeds the time of payment including the time paid for.

Indications of Payment of Parking Charge as Evidence

47. (1) If at any time while a vehicle is left in the parking place specified in column 1 to schedule 2 to this Order during the chargeable hours no ticket issued by a ticket parking meter is displayed on that vehicle in accordance with the provisions of Article 45(3) of this Order it shall be presumed unless the contrary is proved that the parking charge has not been duly paid.

(2) If at any time while a vehicle is left in the parking place specified in column 1 to schedule 2 to this Order during the chargeable hours the ticket issued by a ticket parking meter and displayed on the vehicle in accordance with the provisions of Article 45 of this Order and the clock on the ticket parking meter by which such ticket was issued gives the indication mentioned in Article 46 of this Order it shall be presumed unless the contrary is proved that the parking charge has been duly paid in respect of that vehicle and that the parking period for which payment was made by the parking charge has already expired.

(3) Any ticket issued by a parking meter relating to the parking place specified in column 1 in schedule 2 to this Order shall be presumed unless the contrary is proved to have been issued on the day shown thereon.

Contravention

48. If a vehicle is parked in the parking place without complying with the requirements of this Order, a contravention shall have occurred and a penalty charge shall be payable and a penalty charge notice may then be issued.

Restriction on Removal of Notices

49. Any penalty charge notice fixed to a vehicle in accordance with this Order shall not be removed or interfered with except by or under the authority of the owner, or person in charge of, the vehicle or the Council.

Indications as Evidence

50. The particulars given in any penalty charge notice attached to a vehicle in accordance with the provisions of this Order shall be treated as evidence in any proceedings relating to failure to pay the penalty charge.

Liability and Other Provisions

Liability

51. The Council accepts no liability for loss or damage to vehicles or other property left in the parking place to which this order applies save for that arising from the negligence of the Council.

Validity

52. If a court, the Department of Transport, the Welsh Ministers, the Traffic Penalty Tribunal or the Traffic Enforcement Centre declares any part of this Order to be invalid or unenforceable, such declaration shall not invalidate the remainder of the Order.

Disabled Person's Vehicles

53. The following vehicles when parked within a disabled persons parking bay in the parking place specified in column 1 of schedule 2, except where column 2 of schedule 2 indicates Permits Only, shall be exempt from any limitation on the time and scale of charges specified in column 8 of schedule 2 but only insofar as that vehicle is parking in such a parking bay is a disabled person's vehicle which displays in the relevant position a disabled person's badge.

Permits

54. The Council may issue or arrange for the issuing of permits free of charge allowing vehicles to wait in the Parking Places referred to in column 1 and the scale of charges in column 8 in schedule 2 of this Order but subject to the conditions and eligibility as set out in the provisions in article 56.

55. A person may, on application to the Council, purchase a permit, allowing vehicles to wait in the Parking Places, for a period and at the charge, referred to in schedule 2 to this Order, subject to the provisions in article 56.

56. A concessionary permit or permit must be used in accordance with the following provisions:

- (a) The concessionary permit or permit must be exhibited inside the windscreen of the vehicle so that the particulars shown are clearly visible from outside the vehicle at all times;

(b) The concessionary permit or permit shall not entitle the driver of the vehicle to the reservation of an individual Parking Bay other than permits A, B and G, referred to in Schedule 2. If restricted in use to certain Parking Places, shall be used only in accordance with such restriction;

(c) No person shall alter the information given on the concessionary permit or permit, or knowingly exhibit on a vehicle a concessionary permit or permit which has been altered, defaced, mutilated or added to or upon which the figures or particulars have become illegible;

(d) The concessionary permit or permit shall only be valid for the Parking Place and during the period for which it is issued and shall not be transferrable to another Parking Place;

(e) A vehicle that exhibits an expired concessionary permit or permit, shall be subject to the normal restrictions and Articles referred to in the Order;

(f) The issue and availability of concessionary permits or permits shall be at the discretion of the Council and on such terms as the Council may from time to time decree;

(g) In the event of any Owner seeking a replacement concessionary permit or permit following its loss or destruction and application may be made to the Council and such replacement will be effected and any concessionary permit or permit previously issued to such permit holder shall thereupon to be deemed surrendered and of no effect;

(h) The Council shall be entitled to terminate all rights granted by the issue of any concessionary permit or permit or pre-purchased ticket or waiver if at any time the Owner of the permit or pre purchased ticket or waiver is in contravention of any of the provisions contained in this Order and in any such circumstances the Owner shall not be entitled to any refund whatsoever without prejudice to any other right of action the Council may have whether under this Order or otherwise.

Revocations

57. The Orders specified in Schedule 1 to this Order are revoked insofar as it relates to Parking Places listed in Schedule 1 to this Order.

THE COMMON SEAL of)
FLINTSHIRE COUNTY COUNCIL)
was hereunto affixed)
this 15th day of May 2018)
in the presence of:-)



CHAIRMAN *Purminela*

LEGAL SERVICES MANAGER *Steele*

CHIEF OFFICER (GOVERNANCE)

SCHEDULE 1

THE FLINTSHIRE COUNTY COUNCIL (OFF-STREET PARKING PLACES - HOLYWELL)(CIVIL ENFORCEMENT AND CONSOLIDATION)(AMENDMENT) ORDER 2015

THE FLINTSHIRE COUNTY COUNCIL (OFF-STREET PARKING PLACES)(CIVIL ENFORCEMENT) ORDER 2013

Revoked schedule:

- Station Road, Holywell, as shown edged red on plan 25 attached to this Order

SCHEDULE 2

Column 1	Column 2	Column 3	Column 4	Column 5	Column 6	Column 7	Column 8	Column 9
Name of Parking Place	Classification of Parking Place	Class of Vehicle	Position in Which Vehicle may Wait	Chargeable Days and hours of Parking Places	Operational days and hours	Maximum Period for which Vehicles may stay	Scale of charges	Permit Type
Bevans Yard, Holywell, as shown edged red on Plan 1 attached to this Order	Pay & Display and permits	All Vehicles (not having a trailer attached) not exceeding 3.5 tonnes	Wholly within a parking bay.	Monday to Saturday 08:00 to 17:00	All Days All hours	All Day	30p for up to 1 hour 50p for up to 2 hours £1.50 for all day Residents permit £25 per annum Annual permit £300 per annum Staff permit £12 per annum	Resident Permit Annual Permit Staff Permit

SCHEDULE 2 – continued

Column 1	Column 2	Column 3	Column 4	Column 5	Column 6	Column 7	Column 8	Column 9
Name of Parking Place	Classification of Parking Place	Class of Vehicle	Position in Which Vehicle may Wait	Chargeable Days and hours of Parking Places	Operational days and hours	Maximum Period for which Vehicles may stay	Scale of charges	Permit Type
Halkyn Road, Holywell, as shown edged red on Plan 2 attached to this Order	Pay & Display and permits	All Vehicles (not having a trailer attached) not exceeding 3.5 tonnes	Wholly within a parking bay.	Monday to Saturday 08:00 to 17:00	All Days All hours	All Day	30p for up to 1 hour 50p for up to 2 hours £1.50 for all day Residents permit £25 per annum Annual permit £300 per annum Staff permit £12 per annum	Resident Permit Annual Permit Staff Permit

SCHEDULE 2 – continued

Column 1	Column 2	Column 3	Column 4	Column 5	Column 6	Column 7	Column 8	Column 9
Name of Parking Place	Classification of Parking Place	Class of Vehicle	Position in Which Vehicle may Wait	Chargeable Days and hours of Parking Places	Operational days and hours	Maximum Period for which Vehicles may stay	Scale of charges	Permit Type
Plas yn Dre, Holywell, as shown edged red on Plan 3 attached to this Order	Pay & Display and permits	All Vehicles (not having a trailer attached) not exceeding 3.5 tonnes	Wholly within a parking bay.	Monday to Saturday 08:00 to 17:00	All Days All hours	All Day	30p for up to 1 hour 50p for up to 2 hours £1.50 for all day Residents permit £25 per annum Annual permit £300 per annum Staff permit £12 per annum	Resident Permit Annual Permit Staff Permit

SCHEDULE 2 – continued

Column 1	Column 2	Column 3	Column 4	Column 5	Column 6	Column 7	Column 8	Column 9
Name of Parking Place	Classification of Parking Place	Class of Vehicle	Position in Which Vehicle may Wait	Chargeable Days and hours of Parking Places	Operational days and hours	Maximum Period for which Vehicles may stay	Scale of charges	Permit Type
High Street, Holywell, as shown edged red on Plan 4 attached to this Order	Pay & Display and permits	All Vehicles (not having a trailer attached) not exceeding 3.5 tonnes	Wholly within a parking bay.	Monday to Saturday 08:00 to 17:00	All Days All hours	All Day	30p for up to 1 hour 50p for up to 2 hours £1.50 for all day Residents permit £25 per annum Annual permit £300 per annum Staff permit £12 per annum	Resident Permit Annual Permit Staff Permit
Station Road, Holywell, as shown edged red on Plan 5 attached to this Order	Blue Badge Holders Only	All Vehicles (not having a trailer attached) not exceeding 3.5 tonnes	Wholly within a parking bay.	None	All Days All hours	All Day	None	Blue Badge Holders Only

SCHEDULE 2 – continued

Column 1	Column 2	Column 3	Column 4	Column 5	Column 6	Column 7	Column 8	Column 9
Name of Parking Place	Classification of Parking Place	Class of Vehicle	Position in Which Vehicle may Wait	Chargeable Days and hours of Parking Places	Operational days and hours	Maximum Period for which Vehicles may stay	Scale of charges	Permit Type
Well Street Car Park, Holywell, as shown edged red on Plan 6 attached to this Order	Pay & Display and permits	All Vehicles (not having a trailer attached) not exceeding 3.5 tonnes	Wholly within a parking bay.	Monday to Saturday 08:00 to 17:00	All Days All hours	All Day	30p for up to 1 hour 50p for up to 2 hours £1.50 for all day Residents permit £25 per annum Annual permit £300 per annum Staff permit £12 per annum	Resident Permit Annual Permit Staff Permit



13



SIFY Flint
Flintshire
COUNTY COUNCIL

STREETS/CENE

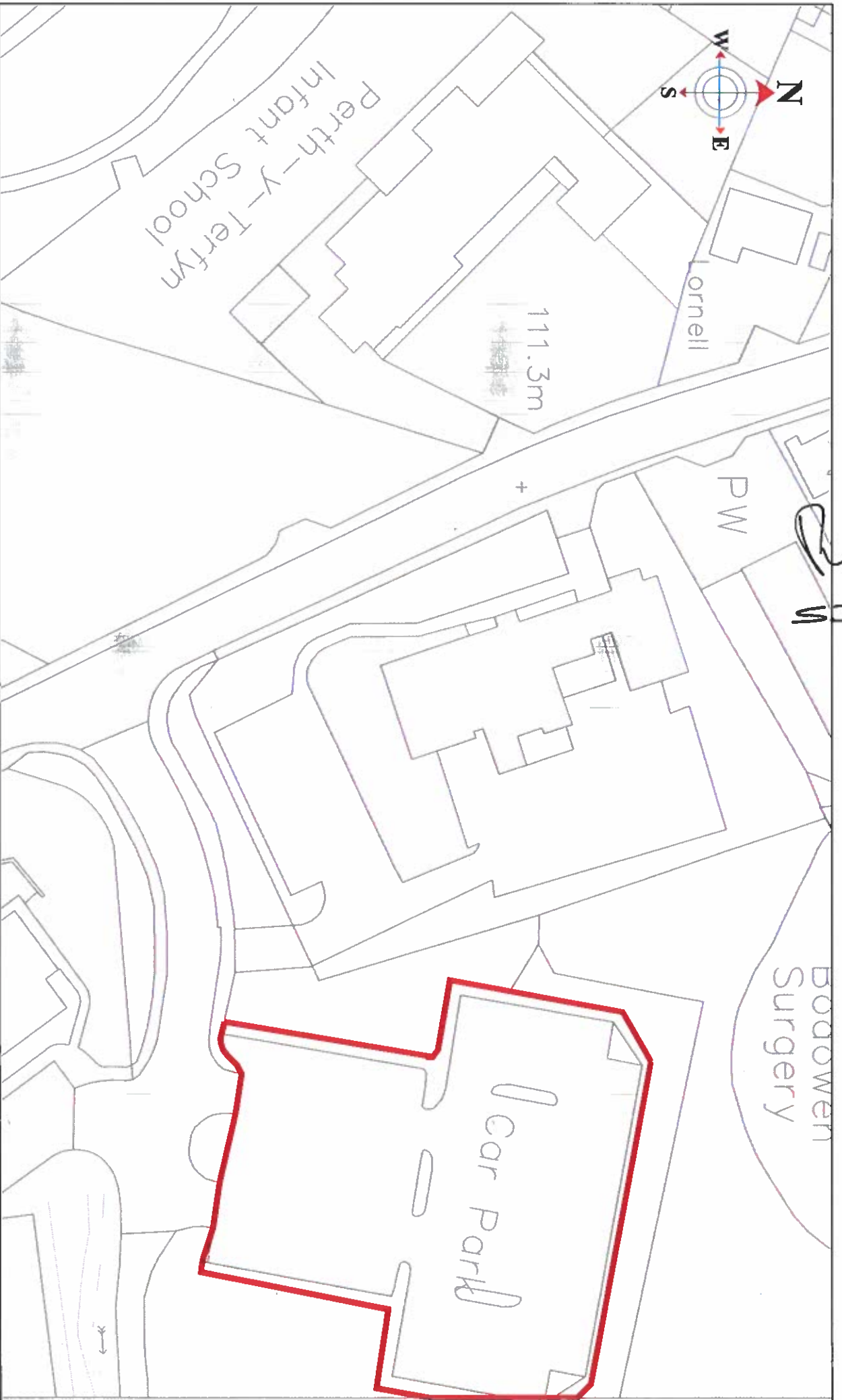
Steve Jones
Civil Engineer (Professional and 11 registrations)
Civil Engineering (Professional) Steve Jones Ltd, 11 registrations, Civil Eng

STANDARD CONDITIONS APPLY TO ALL PLANS WITH THE REMARKS:
THESE PLANS ARE NOT TO BE USED FOR CONSTRUCTION WITHOUT THE RELEVANT
PERMITS AND LICENSES NUMBERED LA (LOCAL AUTHORITY PLANNING COUNTY
COUNCIL, COUNTY HALL, WENTON)

DRAWN BY: NH
CHECKED BY: GT
SCALE: 1:500 @ A4
M.A.T. GRID REF: 511815

PRELIMINARY	AMENDMENTS:	DATE:

Bevan's Yard, Holywell
Car Park Plan 1
DRAWING NUMBER: ST/PS/0001 109 P1



Steve Jones
 Chief Officer (Administration and Transportation)
 Perth Fire Station (Glasgow Road) Perth, Perthshire

Chief Officer (Administration and Transportation)
 Perth Fire Station (Glasgow Road) Perth, Perthshire

STREETS/CENES

THIS DRAWING IS A PRELIMINARY DESIGN AND SHOULD NOT BE USED FOR CONSTRUCTION OR AS A BASIS FOR ANY CONTRACTS OR AGREEMENTS. THE DRAWING IS THE PROPERTY OF STRY FRIM FIREHIRE AND WILL BE DESTROYED OR RECYCLED WITHOUT NOTICE.

DRAWN BY: NH
 CHECKED BY: CT
 SCALE: 1:500 @ A4
 MAT. GRD. REF: S.1075

PRELIMINARY	AMENDMENTS:	DATE

Halkyn Road, Holywell
 Car Park Plan 2
 DRAWING NUMBER
 ST/PS/0001 109 P1

21
11



Gwyn Jones

Chief Office of Transportation and Transportation
The Strategic Development Services Directorate
County Hall, North, Old Park
Newbury Road, Newbury, RG16 1AA

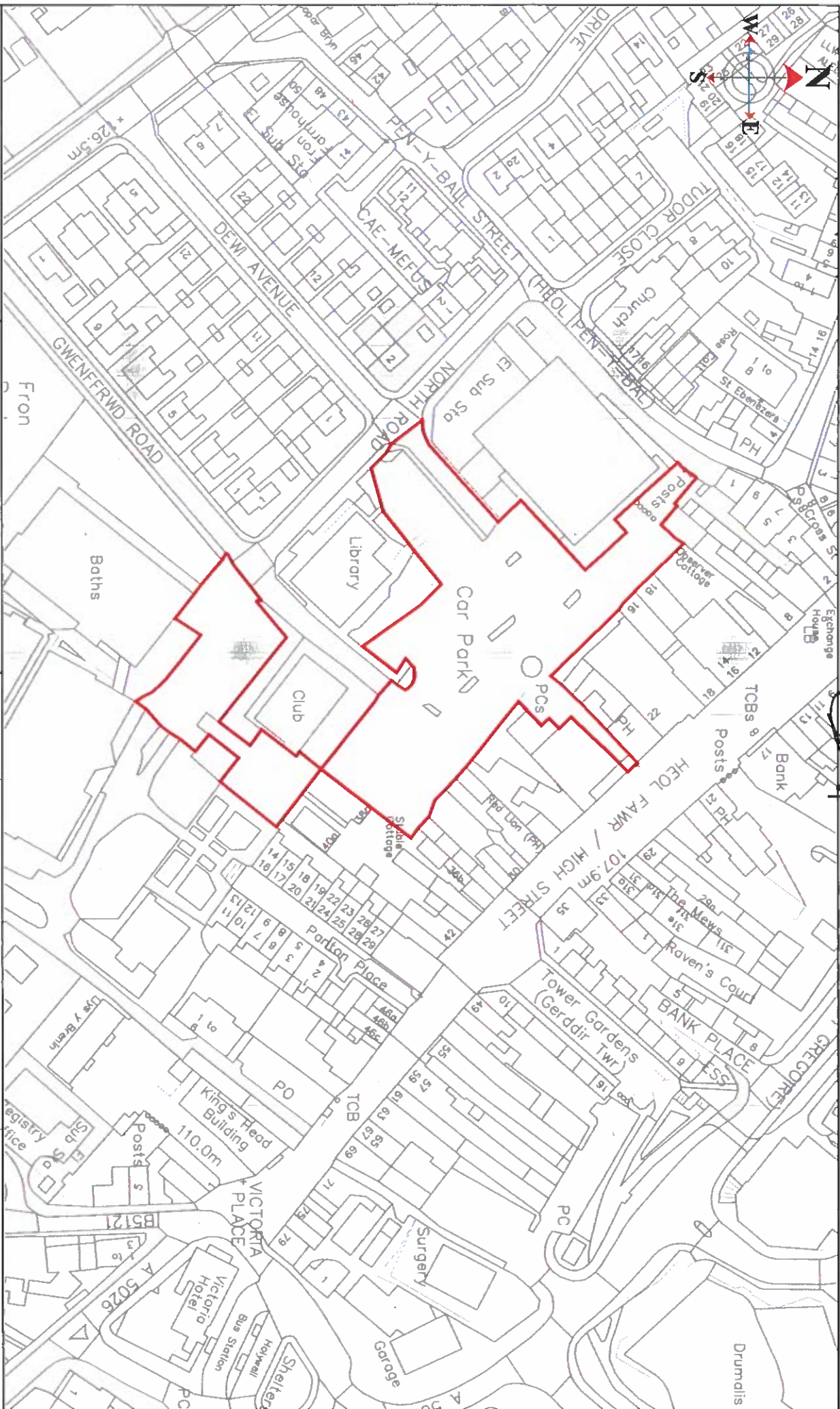
STREETSCENE

PLANNING PERMISSIONS
PLANNING PERMISSIONS
PLANNING PERMISSIONS
PLANNING PERMISSIONS
PLANNING PERMISSIONS
PLANNING PERMISSIONS
PLANNING PERMISSIONS
PLANNING PERMISSIONS
PLANNING PERMISSIONS
PLANNING PERMISSIONS

DRAWN BY: NH
CHECKED BY: CT
SCALE: 1:400 @ A4
MAT. GRID REF: S117/D

PRELIMINARY	AMENDMENTS	DATE

Plas Yn Dre, Holywell
Car Park Plan 3
DRAWING NUMBER
ST/PS/0001 109 [P1]



11



Steve Jones

Chief Engineer (Streetscene and Transportation) Cwm Y Plant Road, Cwm Y Plant
 Chief Planning (Development) 51/52 Tindalwell, Rhosddu, Cwm Y Plant

STREETSCENE

GRABED IJUN EN WANDON CHINDANCE. BUIRE V MAPS WITTI THE PLANINGAM
 OF THE COUNCILLEN OF THE IAN IANREY OF THE COUNCILLEN
 OF THE COUNCILLEN OF THE IAN IANREY OF THE COUNCILLEN
 COUNCIL, COUNCILY WALK, BNS

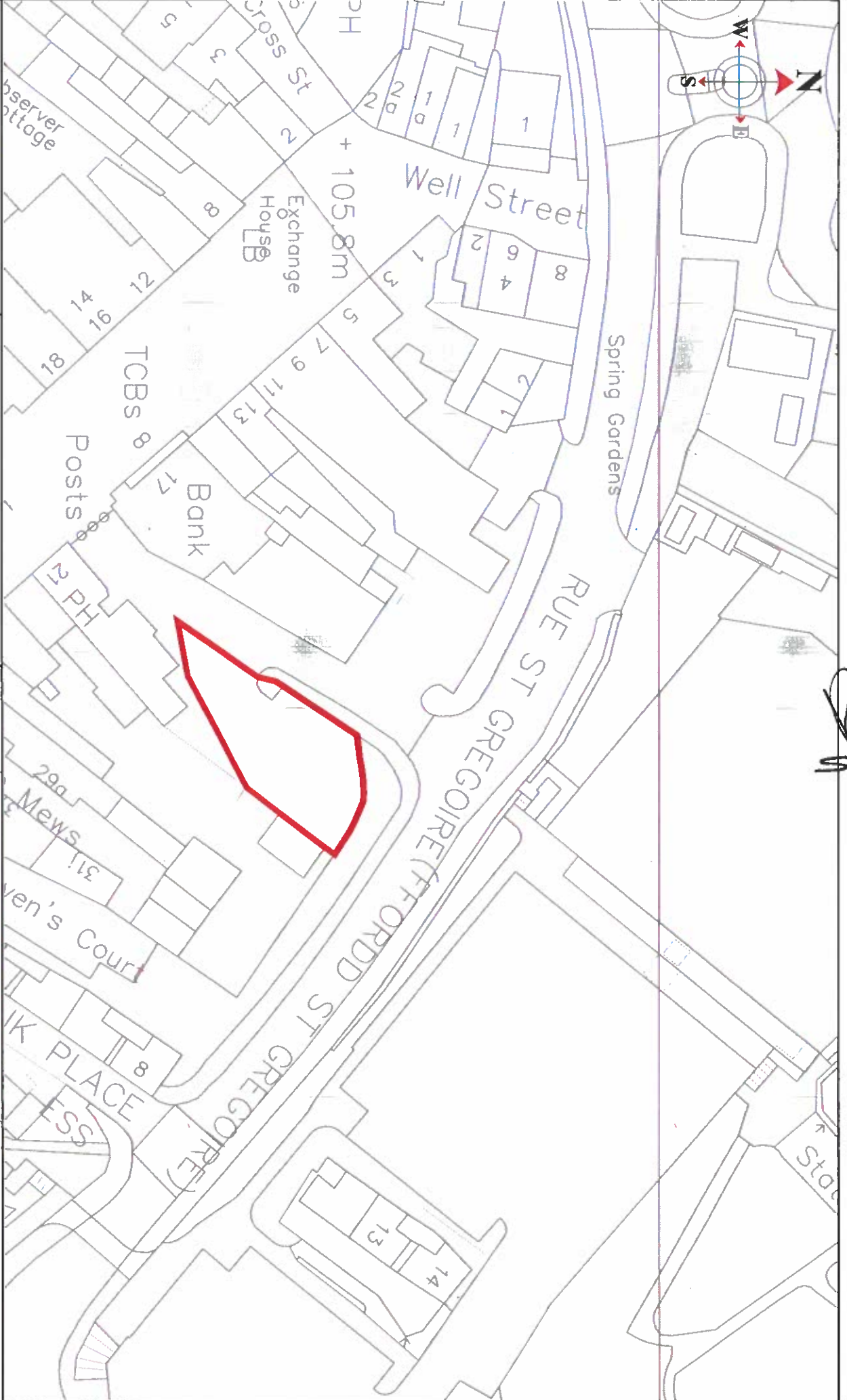
DRAWN BY: MM
 CHECKED BY: GT

PRELIMINARY	AMENDMENTS:	DATE

High Street, Holywell
 Car Park Plan 4

DRAWING NUMBER
 ST/PS/0001 109 P1

SCALE: 1:1000 @ A4
 MAT. GRID REF: S117/2



Handwritten signature or initials.



Str y Flint
Finishire
CONTRACTORS

STREETS/CENE

PLANNED UNDER THE CONTROL OF THE LOCAL AUTHORITY AND THE PERMISSION OF THE COMMISSIONER OF THE ENVIRONMENTAL OFFICE, SOUTH WALES. THE PLANNING PERMISSION NUMBER IS LA 100123000. PLANNING COUNTY NUMBER IS CONY/11/11/11/11/11.

DRAWN BY: JB

PRELIMINARY

AMENDMENTS:

DATE

Station Road, Holywell

CHECKED BY:

DATE

Car Park Plan 5

SCALE:

AMENDMENTS:

DRAWING NUMBER

MAT. GRID REF:

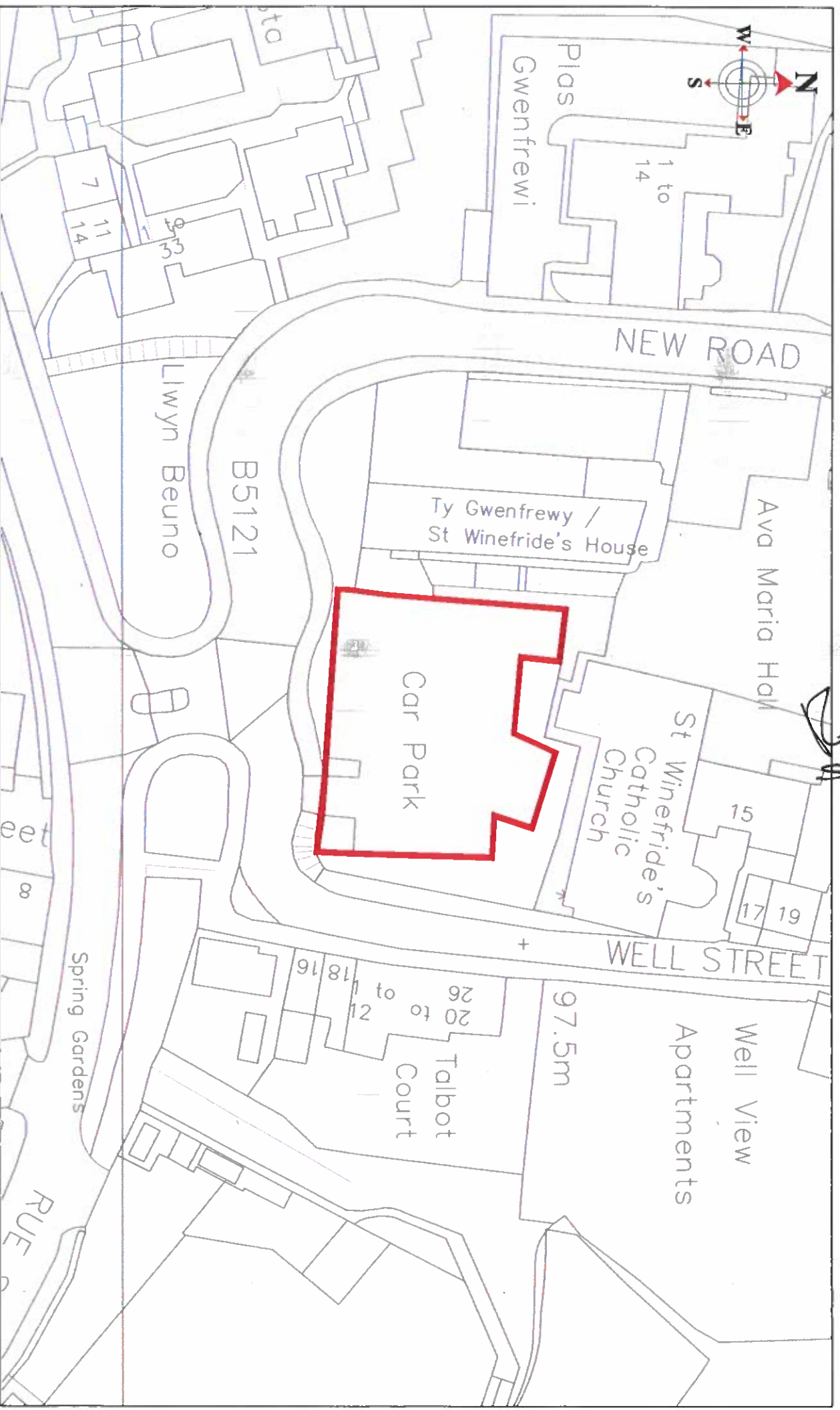
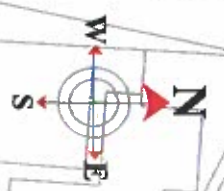
AMENDMENTS:

ST/PS/0001 1001 P1

S.0007

AMENDMENTS:

ST/PS/0001 1001 P1



Steve Jones

Chief Officer (Operations and Transport) / Chief Inspector (Operations and Transport)

Cardiff Road, Holywell, Flintshire, Flintshire, Flintshire, Flintshire

STREETSCENE

THIS DRAWING IS A PRELIMINARY DESIGN AND SHOULD NOT BE USED FOR CONSTRUCTION OR AS A BASIS FOR ANY CONTRACT. THE DRAWING IS THE PROPERTY OF THE DRAWING OFFICE AND WILL BE DESTROYED IF NOT ORDERED BY THE CLIENT WITHIN 12 MONTHS OF THE DATE OF ISSUE.

DRAWN BY:	NH
CHECKED BY:	CJ
SCALE:	1:500 @ A4
MAT. GRID REF:	SJ70

PRELIMINARY	AMENDMENTS:	DATE

Well Street, Holywell
Car Park Plan 6

DRAWING NUMBER
ST/PS/0001 109 P1



THE FLINTSHIRE COUNTY COUNCIL
(OFF-STREET PARKING PLACES – HOLYWELL)
(AMENDMENT NO. 1) ORDER 20XX

STATEMENT OF REASONS

Flintshire County Council, in accordance with the provisions of the Road Traffic Regulation Act 1984, and other enabling enactments, makes provision for off-street parking places.

The Council now proposes to amend the existing Flintshire County Council (Off-Street Parking Places – Holywell) (Revocation) Order 2018 by:

1. Introducing a cashless payment solution for chargeable car parks to supplement the coin only option at the Pay and Display Machines. This proposal supports the Councils digital strategy commitments and offers a flexible and convenient payment method for taking car parking payments.
2. Formalising the length of stay, types of vehicles and the charging structure for vehicles parking within electric vehicle charging spaces in public car parks and introduce overnight charging. This proposal supports the Councils commitment to introducing infrastructure and provision of Ultra-Low Emission Vehicles.

The proposals are detailed in the Public Notice and are contained in the proposed draft order

DATED

XXTH

XXXX

20XX

**THE FLINTSHIRE COUNTY COUNCIL
(OFF-STREET PARKING PLACES – HOLYWELL)
(ADMENDMENT NO. 1) ORDER 20xx**

**Katie Wilby,
Chief Officer
(Streetscene & Transportation),
County Hall,
Mold,
Flintshire,
CH7 6NF**

**THE FLINTSHIRE COUNTY COUNCIL
(OFF-STREET PARKING PLACES – HOLYWELL)
(AMENDMENT No. 2) ORDER 20XX**

Flintshire County Council (hereinafter called “the Council”) in exercise of its powers under Sections 32, 33, 34, 35, 124 (1) and Part IV of Schedule 9 of the Road Traffic Regulation Act 1984 as amended (“the 1984 Act”), the Traffic management Act 2004 (“the 2004 Act”) and of all other enabling powers, and after consultation with the Chief Officer of Police in accordance with Part III of Schedule 9 to the 1984 Act hereby makes the following Order:

Commencement and Citation

1. This Order is supplemental to the Flintshire County Council (Off-Street Parking Places – Holywell) (Revocation) Order 2018 (“the Original Order”) which subject as hereinafter mentioned remains in full force and effect.

2. The Interpretation Act 1978 shall apply for the interpretation of this Order as it applies for the interpretation of an Act of Parliament.

3. This Order shall come into operation on xxth xxxxxx 20xx and may be cited as the Flintshire County Council Off-Street Parking Places – Holywell (Amendment No. 1) Order 20 (“the Order”).

4. Definitions are set out in the Original Order.

Interpretation

5. The Original Order is hereby amended with the inclusion of the following definitions:

“Virtual parking permit” means an electronic record of parking ticket, parking permit or dispensation issued and confirmed by the Council to exempt a vehicle from a restriction or to make payment other than on site covered in the provisions of this order, under the terms applicable at the time of issue. A virtual parking permit may be obtained by any of the methods provided from time to time by the Council and to be valid must be registered on an account in an electronic database approved by the

Council with an indication that the permit has been issued and validated in accordance with Council procedures

“electric motor cycle” means a motor cycle powered only by electricity and charged by an external source.

“electric motor cycle charging bay” means a parking bay which has been marked and signed exclusively for the use of an electric motor cycle whilst that motor cycle is being charged by means of an electric motor cycle charging point.

“electric motor cycle charging point” means a purpose built unit designed specifically for charging electric motor cycles.

Residents Permit means a permit for residents living in domestic properties within the immediate vicinity of a public car park who do not have adequate on street or off street parking provision. All permit applications must provide proof of residency at an address within the immediate vicinity of the car park and the vehicle must be registered to that address.

Staff Permit means a permit for staff and Councillors employed by the Local Authority working at designated Council office(s). A permit will be issued for a public car park in the immediate vicinity of the workplace.

Annual Permit means a parking permit issued to a vehicle for the purposes of parking in a public car park on multiple occasions throughout a year period. The annual permit provides a convenient method of payment for individuals utilising the parking places on a frequent basis.

The below shall be deleted from the Original Order :-

“parking permit” means a season ticket, contract permit, business permit or staff permit of a type and designs issued by the Council on such terms and conditions as it may determine, providing an entitlement to use of the parking place;

And shall be replaced with:-

“parking permit” means any type of permit or virtual permit of a type and design issued by the Council for the purpose of authorising parking in accordance with the provisions of this order.

6. Schedule 2 in the Original Order shall be deleted and replaced with Schedule 2A.
7. Any reference to Schedule 2 within the Original Order shall now be replaced with Schedule 2A.

Exemptions from Parking Charge

8. Article 9 in the Original Order shall be amended as follows:-
9. Within the parking places specified in column 1 of schedule 2A to this Order where parking charges or parking permits are specified in column 8 and column 9 of schedule 2A to this Order, no person shall, except upon the direction or permission of a police constable in uniform or civil enforcement officer, cause or permit any vehicle to wait in the parking places specified in column 1 of schedule 2A to this Order unless that vehicle is displaying in the relevant position:
 - (d) Or has a valid virtual parking permit, where no ticket is required to be displayed.

Restrictions of use of the Parking Place

10. Article 27 in the Original Order shall be amended as follows:-

27. No electric vehicle shall remain in an electric vehicle recharging parking bay within a parking place specified in column 1 of Schedule 2A to this Order for a period in excess of 3 hours and such electric vehicles shall not be left again in an electric vehicle recharging parking bay in that parking place until 3 hours have elapsed from the time at which the said electric vehicle was taken away from that parking place within the hours specified in Column 7. No electric vehicle shall remain within a recharging bay parking bay unless the

vehicle is plugged in and charging. Duration of stay for overnight charging is unlimited between the hours of 5pm -8am.

Indications of Payment of Parking Charge as Evidence

11. Article 47 in the Original Order shall be amended as though the following is added:

(4) If at any time while a vehicle is parked in a parking place, no ticket is displayed on that vehicle in the relevant position and in accordance with the provisions of this order, it shall be deemed that the charge has not been paid unless the vehicle has a valid virtual parking permit.

Valid Virtual Parking Permit

47A. Where arrangements to pay the daily charge have been made by obtaining a valid virtual parking permit, and no pay and display ticket is produced by following the process, the driver of a vehicle shall be exempt from the requirement to display such a ticket.

THE COMMON SEAL of)
FLINTSHIRE COUNTY COUNCIL)
was hereunto affixed)
this xxth day of xxxx 20xx)
in the presence of:-)

CHAIRMAN

LEGAL SERVICES MANAGER

CHIEF OFFICER (GOVERNANCE)

SCHEDULE 2A

Column 1	Column 2	Column 3	Column 4	Column 5	Column 6	Column 7	Column 8	Column 9
Name of Parking Place	Classification of Parking Place	Class of Vehicle	Position in Which Vehicle may Wait	Chargeable Days and hours of Parking Places	Operational days and hours	Maximum Period for which Vehicles may stay	Scale of charges	Permit Type
Bevans Yard, Holywell, as shown edged red on Plan 1 attached to this Order	Pay & Display, Parking Permits	All Vehicles (not having a trailer attached) not exceeding 3.5 tonnes	Wholly within a parking bay.	Monday to Saturday 08:00 to 17:00	All Days All hours	All Day	30p for up to 1 hour 50p for up to 2 hours £1.50 for up to 9 hours Residents permit £25 per annum Annual permit £300 per annum Staff permit £48 per annum	Valid Parking Permit
	Electric vehicles Recharging parking bay	Electric vehicles Electric motor cycles	Wholly within an electric vehicle parking bay	None	All Days All hours	3 hours no return within 3 hours Monday to Sunday 08:00 to 17:00 17.00 to 08.00 no limit	Free Parking	

SCHEDULE 2A – continued

Column 1	Column 2	Column 3	Column 4	Column 5	Column 6	Column 7	Column 8	Column 9
Name of Parking Place	Classification of Parking Place	Class of Vehicle	Position in Which Vehicle may Wait	Chargeable Days and hours of Parking Places	Operational days and hours	Maximum Period for which Vehicles may stay	Scale of charges	Permit Type
Halkyn Road, Holywell, as shown edged red on Plan 2 attached to this Order	Pay & Display, Parking Permits	All Vehicles (not having a trailer attached) not exceeding 3.5 tonnes	Wholly within a parking bay.	Monday to Saturday 08:00 to 17:00	All Days All hours	All Day	30p for up to 1 hour 50p for up to 2 hours £1.50 for up to 9 hours Residents permit £25 per annum Annual permit £48 per annum Staff permit £48 per annum	Valid Parking Permit
	Electric vehicles Recharging parking bay	Electric vehicles Electric motor cycles	Wholly within an electric vehicle parking bay	None	All Days All hours	3 hours no return within 3 hours Monday to Sunday 08:00 to 17:00 17.00 to 08.00 no limit	Free Parking	

SCHEDULE 2A – continued

Column 1	Column 2	Column 3	Column 4	Column 5	Column 6	Column 7	Column 8	Column 9
Name of Parking Place	Classification of Parking Place	Class of Vehicle	Position in Which Vehicle may Wait	Chargeable Days and hours of Parking Places	Operational days and hours	Maximum Period for which Vehicles may stay	Scale of charges	Permit Type
Plas yn Dre, Holywell, as shown edged red on Plan 3 attached to this Order	Pay & Display, Parking Permits	All Vehicles (not having a trailer attached) not exceeding 3.5 tonnes	Wholly within a parking bay.	Monday to Saturday 08:00 to 17:00	All Days All hours	All Day	30p for up to 1 hour 50p for up to 2 hours £1.50 for up to 9 hours Residents permit £25 per annum Annual permit £300 per annum Staff permit £48 per annum	Valid Parking Permit
	Electric vehicles Recharging parking bay	Electric vehicles Electric motor cycles	Wholly within an electric vehicle parking bay	None	All Days All hours	3 hours no return within 3 hours Monday to Sunday 08:00 to 17:00 17.00 to 08.00 no limit	Free Parking	

SCHEDULE 2A – continued

Column 1	Column 2	Column 3	Column 4	Column 5	Column 6	Column 7	Column 8	Column 9
Name of Parking Place	Classification of Parking Place	Class of Vehicle	Position in Which Vehicle may Wait	Chargeable Days and hours of Parking Places	Operational days and hours	Maximum Period for which Vehicles may stay	Scale of charges	Permit Type
High Street, Holywell, as shown edged red on Plan 4 attached to this Order	Pay & Display, Parking Permits	All Vehicles (not having a trailer attached) not exceeding 3.5 tonnes	Wholly within a parking bay.	Monday to Saturday 08:00 to 17:00	All Days All hours	All Day	30p for up to 1 hour 50p for up to 2 hours £1.50 for up to 9 hours Residents permit £25 per annum Annual permit £300 per annum Staff permit £48 per annum	Valid Parking Permit
	Electric vehicles Recharging parking bay	Electric vehicles Electric motor cycles	Wholly within an electric vehicle parking bay	None	All Days All hours	3 hours no return within 3 hours Monday to Sunday 08:00 to 17:00 17.00 to 08.00 no limit	Free Parking	
Station Road, Holywell, as shown edged red on Plan 5 attached to this Order	Blue Badge Holders Only	All Vehicles (not having a trailer attached) not exceeding 3.5 tonnes	Wholly within a parking bay.	None	All Days All hours	All Day	None	Blue Badge Holders Only

	Electric vehicles Recharging parking bay	Electric vehicles Electric motor cycles	Wholly within an electric vehicle parking bay	None	All Days All hours	3 hours no return within 3 hours Monday to Sunday 08:00 to 17:00 17.00 to 08.00 no limit	Free Parking	
--	---	--	---	------	-----------------------	--	--------------	--

SCHEDULE 2A – continued

Column 1	Column 2	Column 3	Column 4	Column 5	Column 6	Column 7	Column 8	Column 9
Name of Parking Place	Classification of Parking Place	Class of Vehicle	Position in Which Vehicle may Wait	Chargeable Days and hours of Parking Places	Operational days and hours	Maximum Period for which Vehicles may stay	Scale of charges	Permit Type
Well Street Car Park, Holywell, as shown edged red on Plan 6 attached to this Order	Pay & Display, Parking Permits	All Vehicles (not having a trailer attached) not exceeding 3.5 tonnes	Wholly within a parking bay.	Monday to Saturday 08:00 to 17:00	All Days All hours	All Day	30p for up to 1 hour 50p for up to 2 hours £1.50 for up to 9 hours Residents permit £25 per annum Annual permit £300 per annum Staff permit £48 per annum	Valid Parking Permit
	Electric vehicles Recharging parking bay	Electric vehicles Electric motor cycles	Wholly within an electric vehicle parking bay	None	All Days All hours	3 hours no return within 3 hours Monday to Sunday 08:00 to 17:00 17.00 to 08.00 no limit	Free Parking	

