

Assessment of Local Well-being for Flintshire - **Area Profiles**

April 2017



FLINTSHIRE PUBLIC SERVICES BOARD
BWRDD GWASANAETHAU CYHOEDDUS SIR Y FFLINT

Appendix 1: community well-being assessments

Introduction

To enable meaningful analysis below the Flintshire level, the well-being assessment has been split into seven areas. These areas have been broadly defined by considering town and community council ward boundaries and grouping together those which have the most natural affinity to one another.

In its statutory guidance on the Well-being of Future Generations (Wales) Act 2015¹, Welsh Government states that:

“The assessment must identify the geographic community areas which comprise the board’s entire area. It is intended that these ‘communities’ are localities within the board’s area which are large enough to show differences between them and have a sense of identity but not as small as electoral wards...

...Assessing the well-being of each community is intended to ensure that the differences between the various communities within a board’s area are analysed. The board will have the principles of sustainable development in mind when analysing these differences.”

Profiles for Flintshire’s seven community areas are shown in the following pages.

Limitations of community level analysis

We have some concerns about putting too much weight on community level analysis at such an early stage in the development of the Public Services Board.

Often people see their community as being their town or village, and sometimes just their particular housing estate or group of streets. Other people felt that their community was focussed around an activity or a particular cultural or religious group they were involved with and not necessarily a geographic location.

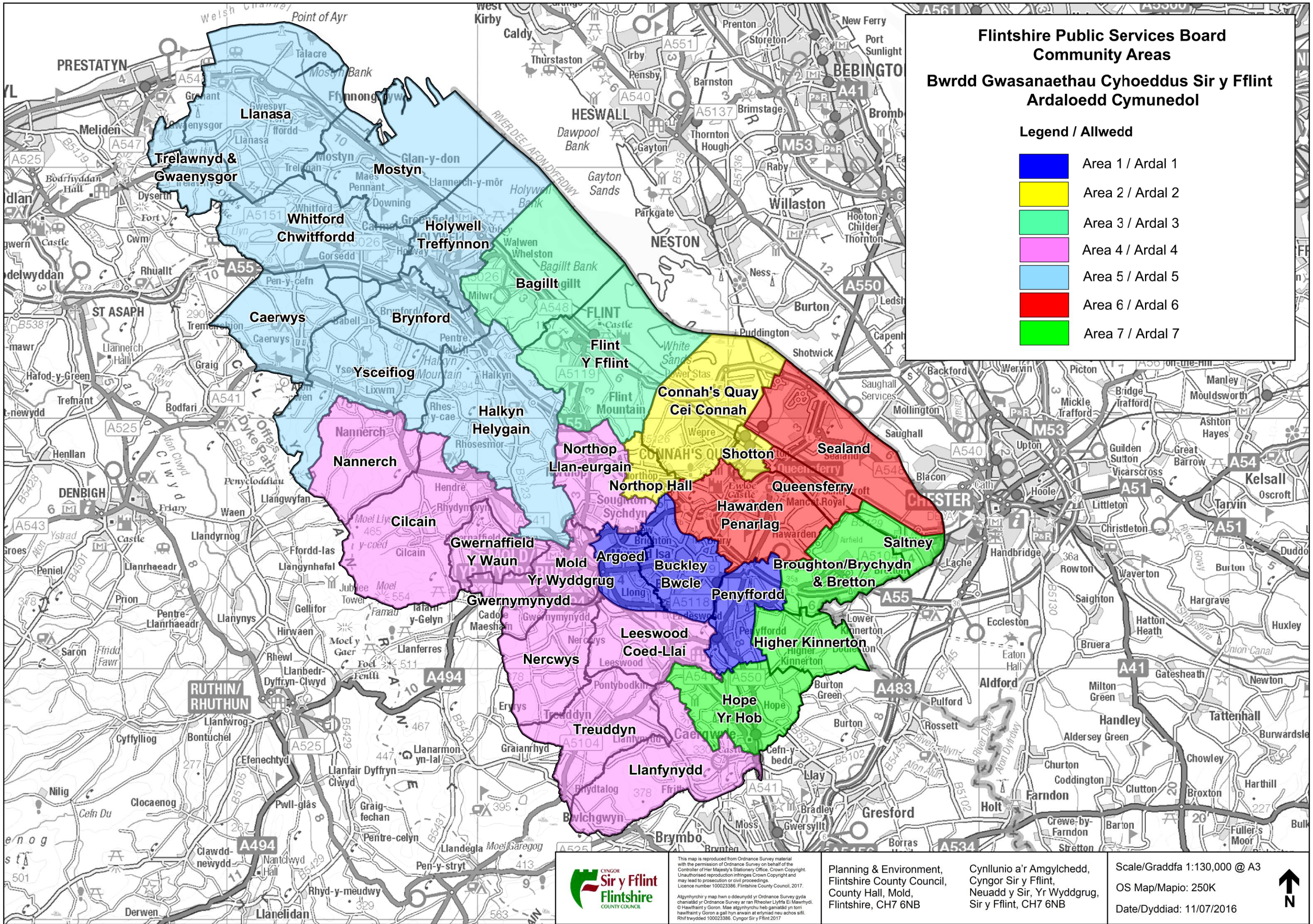
All of the topics discussed in this assessment cross multiple communities. When putting together a response to the topics raised, we suggest that public services should seek to avoid focussing too closely on geographies rather than the groups of people affected, as this can result in ‘postcode lotteries’ where some at-need groups and individuals are excluded from support because they live in the ‘wrong’ place.

Analysis at the LSOA level conducted as part of the Communities First programme raised concerns around hidden deprivation, particularly in rural communities. A single LSOA in rural areas can cover a number of disparate small villages with very different well-being needs. Pockets of deprivation are often smaller and harder to identify and can get lost in the broader area profile. This is due to the more scattered and less uniform mix of housing, employment, and other factors affecting material and economic well-being. On a larger scale, this is also an

¹ SPSF 3: Collective role (public services boards), Guidance for the Well-being of Future Generations Act (Wales)

issue for other community areas. Where the boundaries are drawn and the dwellings they include or exclude can have a big impact on the content of assessments and the conclusions made.

There is also a need to make sure that community level analysis under the Well-being of Future Generations Act fits in with the Place Plans being produced as part of the Planning (Wales) Act 2015. The development of Place Plans is still in its early stages and formal guidance has not yet been published by the Welsh Government. In order to reduce duplication and produce co-ordinated, effective and efficient community well-being assessments which will be of use to both Acts, it is wise to delay detailed assessment for small areas until the production of Place Plans is more advanced.



Flintshire Public Services Board

Community Areas

Bwrdd Gwasanaethau Cyhoeddus Sir y Fflint

Ardaloedd Cymunedol

Legend / Allwedd

Area 1 / Ardal 1

Area 2 / Ardal 2

Area 3 / Ardal 3

Area 4 / Ardal 4

Area 5 / Ardal 5

Area 6 / Ardal 6

Area 7 / Ardal 7

Flintshire community area 1

Encompasses extensive settlements within the towns and communities of Buckley, Argoed and Penyffordd. It contains the following lower super output areas (LSOAs) and wards (electoral divisions).

Area 1			
LSOA		Ward (electoral district)	
W01000249	Argoed (Flintshire) 1	W05000180	Argoed
W01000250	Argoed (Flintshire) 2	W05000187	Buckley Bistre East
W01000259	Buckley Bistre East 1	W05000188	Buckley Bistre West
W01000260	Buckley Bistre East 2	W05000189	Buckley Mountain
W01000261	Buckley Bistre West 1	W05000190	Buckley Pentrobin
W01000262	Buckley Bistre West 2	W05000223	New Brighton
W01000263	Buckley Bistre West 3	W05000226	Penyffordd
W01000264	Buckley Mountain 1		
W01000265	Buckley Mountain 2		
W01000266	Buckley Pentrobin 1		
W01000267	Buckley Pentrobin 2		
W01000268	Buckley Pentrobin 3		
W01000321	New Brighton 1		
W01000322	New Brighton 2		
W01000326	Penyffordd 1		
W01000327	Penyffordd 2		

The town of Buckley, historically famous for its potteries, has expanded considerably over the years and is one of the largest towns in Flintshire.

Flintshire area 1

Key points

Population characteristics - slightly older age structure than GB, with noticeable dip in 16-29 age group. Population density relatively high. Ethnicity & religion significantly less diverse than national averages. Welsh speakers well below Welsh average.

Health - limiting long term illness slightly above England & Wales average. High levels of hypertension and asthma, compared to Wales average.

Housing and living arrangements - one person households lower than national average. Overcrowding and lack of central heating levels well below national average, as is proportion of households with no car. High levels of owner occupation & low levels of renting from both social landlords and other. House prices well above Welsh average. Affordability (income to houseprice ratio) particularly poor at lower quartile level.

Community safety - crime rates very low compared to national averages.

Economy - employment in professional/technical/scientific and education industries slightly low compared to national figures. Comparatively high employment in manufacturing. Proportion of people in managerial/professional/high skilled socio-economic groupings above Welsh average. Unemployed claimant rate lower than GB average.

Income and benefits - income levels above national average. Low proportion of people claiming out of work benefits.

Poverty and deprivation - lower than average levels.

These statistics may be used under the terms of the Open Government Licence.

Produced by the Corporate Research and Information Unit, Conwy County Borough Council

Population characteristics

Population, age and gender 2014 (ONS MYE)

	Area 1		Flintshire	Wales	GB
	Number	%	%	%	%
Mid-year population 2004	24,700	Change	Change	Change	Change
Mid-year population 2014	25,650	3.8%	2.8%	4.9%	7.8%
Males	12,500	48.8%	49.3%	49.2%	49.2%
Females	13,150	51.2%	50.7%	50.8%	50.8%
Aged 0-15	4,550	17.7%	18.5%	18.0%	18.8%
Aged 16-29	4,000	15.6%	16.4%	18.2%	18.3%
Aged 30-44	4,900	19.0%	18.1%	18.0%	19.7%
Aged 45-64	6,850	26.7%	27.3%	26.3%	25.5%
Aged 65+	5,400	21.0%	19.7%	19.5%	17.7%
Population density 2014 (persons/ha)		9.96	3.51	1.49	4.16

Population characteristics (Census 2011)

	Area 1		Flintshire	Wales	E & W
	Number	%			
Born in Wales	11,956	47.1%	50.0%	72.7%	4.9%
Born outside the UK	802	3.2%	4.2%	5.5%	13.4%
Ethnicity - white British	24,726	97.4%	95.9%	93.2%	80.5%
Other white	394	1.6%	2.6%	2.4%	5.5%
Mixed ethnic group	103	0.4%	0.6%	1.0%	2.2%
Other ethnic groups	153	0.6%	1.0%	3.4%	11.8%
Religion - Christian	17,094	67.4%	66.4%	57.6%	59.3%
Other religion	159	0.6%	0.9%	2.7%	8.4%
No religion	6,254	24.6%	25.4%	32.1%	25.1%
(of persons aged 3+)					
Speak Welsh	2,813	11.5%	13.2%	19.0%	-
No skills in Welsh	19,914	81.2%	79.4%	73.3%	-

Flintshire area 1

Health

Health and provision of care (Census 2011)

	Area 1		Flintshire	Wales	E & W
	Number	%			
People with limiting long term illness	4,739	18.7%	19.5%	22.7%	17.9%
People providing unpaid care	3,018	11.9%	11.6%	12.1%	10.3%

Patients with chronic illness, by GP cluster (General Medical Services QOF 2015-16)

	Area 1	Flintshire	Wales
Cluster name	South Flintshire		
Hypertension (high blood pressure)	16.4%	16.0%	15.6%
Asthma	7.5%	7.0%	6.9%
Diabetes	5.7%	5.6%	5.9%
Coronary heart disease	3.9%	3.8%	3.8%
Chronic obstructive pulmonary disease*	2.1%	2.3%	2.2%
Epilepsy	0.7%	0.7%	0.8%
Heart failure	1.0%	1.0%	1.0%
Cancer	3.3%	2.8%	2.6%
Dementia	0.6%	0.5%	0.6%

* lung diseases including chronic bronchitis and emphysema

Based on clusters of GP surgeries as identified by local health boards. The health boards have formally developed arrangements for small groups of GP practices to work collaboratively to develop services in the community, serving populations of between 30 and 50 thousand patients. Clusters are best fit to the sub areas and do not exactly match the same boundaries.

Housing and living arrangements

Households (Census, 2011)

	Area 1		Flintshire	Wales	E & W
	Number	%			
Total households	10,643		63,781	1,302,676	23,366,044
All one person household	2,831	26.6%	27.4%	30.8%	30.2%
- one person; aged 65+	1,341	12.6%	12.9%	13.7%	12.4%
All households with dependent children	3,083	29.0%	29.7%	28.2%	29.1%
- lone parents with dependents	662	6.2%	7.0%	7.5%	7.2%
All households of only pensioners	2,439	22.9%	22.2%	22.9%	20.9%
Population in private households	25,200	99.3%	99.5%	98.3%	98.2%
Average household size	2.37			2.31	2.36

Household facilities

No central heating	97	0.9%	1.6%	2.3%	2.7%
Overcrowded	274	2.6%	3.8%	5.2%	8.5%
Average rooms per household	5.8		5.8	5.7	5.4
No car	1,393	13.1%	17.0%	22.9%	25.6%

Tenure

Owner occupied	8,429	79.2%	73.4%	67.8%	64.3%
Rented from social landlord	1,098	10.3%	15.1%	16.5%	17.6%
Other rented	1,116	10.5%	11.5%	15.7%	18.0%

Dwellings by council tax band (Neighbourhood Stats, March 2011)

	Area 1		Flintshire	Wales
	Number	%		
Total dwellings	10,666	100%	65,332	1,375,592
Band A	510	4.8%	6.1%	14.9%
Band B	657	6.2%	14.0%	21.3%
Band C	3,061	28.7%	30.1%	21.7%
Band D	2,702	25.3%	18.5%	16.0%
Band E	2,305	21.6%	15.1%	13.1%
Band F	1,066	10.0%	10.2%	8.0%
Band G	311	2.9%	4.6%	3.7%
Band H	45	0.4%	0.9%	0.9%
Band I	9	0.1%	0.3%	0.4%

Flintshire area 1

House prices (Land Registry, 2015; CACI PayCheck, 2015)

	Area 1	Flintshire	Wales	E & W
Median (All house types)	£ 163,000	£ 150,000	£ 140,000	£ 203,995
Lower quartile (All house types)	£ 135,500	£ 116,500	£ 100,000	£ 135,000
Ratio income:houseprice (median)	5.6	5.5	5.8	7.1
Ratio income:houseprice (lower quartile)	8.3	7.8	7.4	8.7

Community safety

Crime incidences (North Wales Police, 2016)

	Area 1		Flintshire	Wales	E & W
	Number	Rate*			
All crime incidences 2015/16	707	27.56	47.01	61.16	78.63
Violence against the person	239	9.32	12.96	16.84	17.32
Theft & handling	125	4.87	10.19	-	-
Criminal damage & arson	166	6.47	9.56	10.19	9.40

*annual crime rate per 1,000 population

Fire incidences - accidental dwelling fires (North Wales Fire and Rescue Service, three year data 2013-2016)

Incidents	7 three year average
Casualties (injuries & fatalities)	7 three year total

Economy & employment

Industry of employment (Census 2011)

	Area 1		Flintshire	Wales	E & W
	Number	%			
All in employment (aged 16-74)	12,680		74,049	1,363,615	26,526,336
Agriculture, forestry & fishing	68	0.5%	0.9%	1.7%	0.9%
Mining, quarrying, energy, water	220	1.7%	2.0%	1.9%	1.5%
Manufacturing	2,268	17.9%	18.9%	10.5%	8.9%
Construction	1,077	8.5%	7.7%	8.2%	7.7%
Wholesale & retail	2,072	16.3%	16.3%	15.6%	15.9%
Transport & storage	432	3.4%	4.1%	3.9%	5.0%
Accommodation & food services	601	4.7%	5.2%	6.2%	5.6%
Communication, finance, property	1,000	7.9%	6.8%	6.6%	9.7%
Professional, scientific, technical	542	4.3%	4.5%	4.3%	6.6%
Administrative & support services	481	3.8%	4.4%	4.0%	4.9%
Public administration & defence	828	6.5%	5.7%	7.9%	6.0%
Education	1,061	8.4%	8.6%	10.1%	9.9%
Health & social work	1,528	12.1%	11.1%	14.5%	12.5%
Other	502	4.0%	3.8%	4.5%	5.0%
No qualifications (all aged 16+)	4,245	20.4%	23.5%	25.9%	22.7%
Level 4+ qualification	4,851	23.4%	22.4%	24.5%	27.2%

Social class (Census, 2011)

	Area 1		Flintshire	Wales	E & W
	Number	%			
All aged 16-74	18,861		112,325	2,245,166	41,126,540
Managerial & professional	5,726	30.4%	28.0%	27.4%	31.1%
Skilled	6,349	33.7%	31.6%	29.4%	29.1%
Part / unskilled	5,095	27.0%	30.2%	28.8%	25.2%
Students & other	1,691	9.0%	10.2%	14.5%	14.6%

Unemployment (claimant count) (NOMIS, 2016)

	Area 1		Flintshire	Wales	GB
Dec-15	215	1.4%	1.6%	2.2%	1.7%
Mar-16	210	1.3%	1.7%	2.4%	1.9%
Jun-16	190	1.2%	1.6%	2.2%	1.8%
Sep-16	190	1.2%	1.6%	2.2%	1.8%
Claimants aged 16-24 (Sep-16)*	40	21.1%	26.1%	25.8%	22.5%
Claimants aged 50+ (Sep-16)*	35	18.4%	21.5%	22.1%	23.8%

* Rounded to nearest 5. % is of all claimants.

Well-being of future generations - community assessment

Flintshire area 1

Income & benefits

Household income (CACI PayCheck, 2015)

	Area 1		Flintshire	Wales	GB
	£	%			
Median income	29,200		27,300	24,250	28,700
Lower quartile	16,350		15,000	13,600	15,450
Households below 60% GB median (= £17,173)		27.0%	30.1%	34.5%	28.8%

Benefits (NOMIS, 2016)

	Area 1		Flintshire	Wales	GB
	Number	%			
February 2015					
All working age client group*	1,535	9.8%	12.3%	16.3%	12.5%
Job seekers*	230	1.5%	1.7%	2.5%	2.0%
ESA/incapacity benefits*	740	4.7%	6.0%	8.6%	6.3%
Lone parent*	125	0.8%	1.1%	1.3%	1.1%
Other income related*	35	0.2%	0.3%	0.3%	0.3%
All key out of work benefits*	1,130	7.2%	9.1%	12.8%	9.7%
Carers*	190	1.2%	1.7%	2.0%	1.5%
Disabled*	180	1.2%	1.3%	1.3%	1.1%
Bereaved*	35	0.2%	0.2%	0.2%	0.2%
Pension credit**	775	13.5%	17.6%	20.3%	18.6%
February 2016					
All working age client group*	1,415	9.1%	11.2%	15.2%	11.8%
Job seekers*	140	0.9%	1.0%	1.9%	1.5%
Incapacity benefits*	735	4.7%	5.9%	8.4%	6.2%
Lone parent*	115	0.7%	1.0%	1.2%	1.1%
Other income related*	25	0.2%	0.2%	0.3%	0.2%
All key out of work benefits*	1,015	6.5%	8.1%	11.8%	9.0%
Carers*	225	1.4%	1.8%	2.1%	1.6%
Disabled*	150	1.0%	1.0%	1.1%	1.0%
Bereaved*	25	0.2%	0.2%	0.2%	0.2%
Pension credit**	715	12.4%	16.0%	18.7%	17.1%

* % is of all work age ** % is of all receiving state pension

Poverty and deprivation

Children in families receiving tax credits (HMRC, 2016)

	Area 1		Flintshire	Wales	GB
Children in in-work families	1,745	34.2%	38.0%	40.0%	38.8%
Children in out-of-work families	690	13.5%	17.7%	22.1%	19.8%
Total	2,435	47.7%	55.7%	62.1%	58.6%

As % all children. In work is working 16 hrs a week or more

Welsh index of multiple deprivation (Welsh Government, 2014)

	Area 1		Flintshire	
Total LSOAs in area	16		92	
No. LSOAs in most deprived:	10%	25%	10%	25%
In each deprivation domain				
Overall Index	0	1	2	16
Income	0	1	4	13
Employment	0	0	2	9
Health	0	0	2	10
Education	0	1	4	18
Access to services	0	0	3	20
Community safety	0	4	8	20
Physical environment	1	8	32	48
Housing	0	1	6	26

Deprivation data shows how many lower super output areas (LSOAs) in the area are in the 10% and 25% most deprived LSOAs in Wales.

Flintshire community area 2

Encompasses the former industrial towns of Connah's Quay and Shotton, located on the River Dee, and Northop Hall a rural village community sitting on a ridge above the towns. It contains the following lower super output areas (LSOAs) and wards (electoral divisions).

Area 2			
LSOA		Ward (electoral district)	
W01000273	Connah's Quay Central 1	W05000194	Connah's Quay Central
W01000274	Connah's Quay Central 2	W05000195	Connah's Quay Golftyn
W01000275	Connah's Quay Golftyn 1	W05000196	Connah's Quay South
W01000276	Connah's Quay Golftyn 2	W05000197	Connah's Quay Wepre
W01000277	Connah's Quay Golftyn 3	W05000225	Northop Hall
W01000278	Connah's Quay Golftyn 4	W05000231	Shotton East
W01000279	Connah's Quay South 1	W05000232	Shotton Higher
W01000280	Connah's Quay South 2	W05000233	Shotton West
W01000281	Connah's Quay South 3		
W01000282	Connah's Quay South 4		
W01000283	Connah's Quay Wepre		
W01000325	Northop Hall		
W01000334	Shotton East		
W01000335	Shotton Higher 1		
W01000336	Shotton Higher 2		
W01000337	Shotton West		

Wepre Park, an ancient woodland rich in wildlife and history, is located in this area. Coleg Cambria's Deeside Campus and new 6th form hub is located on the western boundary and a part of Deeside Industrial Park, one of the largest employment sites in the Country, sits to the east.

Flintshire area 2

Key points

Population characteristics - slightly younger age structure than Wales & GB. Population density relatively high. Ethnicity & religion significantly less diverse than England & Wales averages, but high proportion of 'other white' ethnic group compared to Wales as a whole. Welsh speakers well below Welsh average.

Health - limiting long term illness below Wales average. Levels of chronic illness similar to averages for Wales as a whole.

Housing and living arrangements - higher proportion of households with children - including lone parent households - than national average. Overcrowding and lack of central heating levels well below national average. Owner occupation above national level. House prices well below Welsh average.

Community safety - crime rates above Wales levels but overall below England & Wales rates.

Economy - employment in professional/technical/scientific, communications/finance/property, education and health & social work industries slightly low compared to national figures. Comparatively high employment in manufacturing and wholesale & retail. Qualification levels low compared to national figures. Proportion of people in part/low skilled socio-economic grouping well above Wales and England & Wales average.

Income and benefits - income levels below national average. Proportion of people claiming out of work benefits below Wales level, comparable to England & Wales figures.

Poverty and deprivation - proportion of children in families claiming Working Tax Credits slightly above GB level. Higher than average levels of deprivation in the community safety, physical environment and housing domains of the Welsh Index of Multiple Deprivation.

These statistics may be used under the terms of the Open Government Licence.

Produced by the Corporate Research and Information Unit, Conwy County Borough Council

Population characteristics

Population, age and gender 2014 (ONS MYE)

	Area 2		Flintshire	Wales	GB
	Number	%	%	%	%
Mid-year population 2004	24,200	Change	Change	Change	Change
Mid-year population 2014	25,250	4.3%	2.8%	4.9%	7.8%
Males	12,500	49.6%	49.3%	49.2%	49.2%
Females	12,700	50.4%	50.7%	50.8%	50.8%
Aged 0-15	4,950	19.6%	18.5%	18.0%	18.8%
Aged 16-29	4,700	18.6%	16.4%	18.2%	18.3%
Aged 30-44	5,000	19.7%	18.1%	18.0%	19.7%
Aged 45-64	6,450	25.6%	27.3%	26.3%	25.5%
Aged 65+	4,150	16.5%	19.7%	19.5%	17.7%
Population density 2014 (persons/ha)		10.25	3.51	1.49	4.16

Population characteristics (Census 2011)

	Area 2		Flintshire	Wales	E & W
	Number	%			
Born in Wales	11,706	46.9%	50.0%	72.7%	4.9%
Born outside the UK	1,309	5.2%	4.2%	5.5%	13.4%
Ethnicity - white British	23,539	94.3%	95.9%	93.2%	80.5%
Other white	960	3.8%	2.6%	2.4%	5.5%
Mixed ethnic group	166	0.7%	0.6%	1.0%	2.2%
Other ethnic groups	302	1.2%	1.0%	3.4%	11.8%
Religion - Christian	16,170	64.8%	66.4%	57.6%	59.3%
Other religion	218	0.9%	0.9%	2.7%	8.4%
No religion	6,840	27.4%	25.4%	32.1%	25.1%
(of persons aged 3+)					
Speak Welsh	2,386	10.0%	13.2%	19.0%	-
No skills in Welsh	20,177	84.5%	79.4%	73.3%	-

Flintshire area 2

Health

Health and provision of care (Census 2011)

	Area 2		Flintshire	Wales	E & W
	Number	%			
People with limiting long term illness	4,587	18.4%	19.5%	22.7%	17.9%
People providing unpaid care	2,597	10.4%	11.6%	12.1%	10.3%

Patients with chronic illness, by GP cluster (General Medical Services QOF 2015-16)

	Area 2		Flintshire	Wales
Cluster name	North east Flintshire			
Hypertension (high blood pressure)		15.3%	16.0%	15.6%
Asthma		6.7%	7.0%	6.9%
Diabetes		5.3%	5.6%	5.9%
Coronary heart disease		3.7%	3.8%	3.8%
Chronic obstructive pulmonary disease*		2.2%	2.3%	2.2%
Epilepsy		0.6%	0.7%	0.8%
Heart failure		0.9%	1.0%	1.0%
Cancer		2.6%	2.8%	2.6%
Dementia		0.3%	0.5%	0.6%

* lung diseases including chronic bronchitis and emphysema

Based on clusters of GP surgeries as identified by local health boards. The health boards have formally developed arrangements for small groups of GP practices to work collaboratively to develop services in the community, serving populations of between 30 and 50 thousand patients. Clusters are best fit to the sub areas and do not exactly match the same boundaries.

Housing and living arrangements

Households (Census, 2011)

	Area 2		Flintshire	Wales	E & W
	Number	%			
Total households	10,258		63,781	1,302,676	23,366,044
All one person household	2,775	27.1%	27.4%	30.8%	30.2%
- one person; aged 65+	1,150	11.2%	12.9%	13.7%	12.4%
All households with dependent children	3,293	32.1%	29.7%	28.2%	29.1%
- lone parents with dependents	863	8.4%	7.0%	7.5%	7.2%
All households of only pensioners	1,968	19.2%	22.2%	22.9%	20.9%
Population in private households	24,901	99.7%	99.5%	98.3%	98.2%
Average household size	2.43			2.31	2.36

Household facilities

No central heating	197	1.9%	1.6%	2.3%	2.7%
Overcrowded	499	4.9%	3.8%	5.2%	8.5%
Average rooms per household	5.6		5.8	5.7	5.4
No car	2,144	20.9%	17.0%	22.9%	25.6%

Tenure

Owner occupied	7,211	70.3%	73.4%	67.8%	64.3%
Rented from social landlord	1,782	17.4%	15.1%	16.5%	17.6%
Other rented	1,265	12.3%	11.5%	15.7%	18.0%

Dwellings by council tax band (Neighbourhood Stats, March 2011)

	Area 2		Flintshire	Wales
	Number	%		
Total dwellings	10,538	100%	65,332	1,375,592
Band A	1,092	10.4%	6.1%	14.9%
Band B	1,846	17.5%	14.0%	21.3%
Band C	4,106	39.0%	30.1%	21.7%
Band D	1,485	14.1%	18.5%	16.0%
Band E	1,385	13.1%	15.1%	13.1%
Band F	468	4.4%	10.2%	8.0%
Band G	138	1.3%	4.6%	3.7%
Band H	9	0.1%	0.9%	0.9%
Band I	9	0.1%	0.3%	0.4%

Flintshire area 2

House prices (Land Registry, 2015; CACI PayCheck, 2015)

	Area 2	Flintshire	Wales	E & W
Median (All house types)	£ 127,000	£ 150,000	£ 140,000	£ 203,995
Lower quartile (All house types)	£ 105,000	£ 116,500	£ 100,000	£ 135,000
Ratio income:houseprice (median)	5.1	5.5	5.8	7.1
Ratio income:houseprice (lower quartile)	7.5	7.8	7.4	8.7

Community safety

Crime incidences (North Wales Police, 2016)

	Area 2		Flintshire	Wales	E & W
	Number	Rate*			
All crime incidences 2015/16	1,673	66.28	47.01	61.16	78.63
Violence against the person	438	17.35	12.96	16.84	17.32
Theft & handling	392	15.53	10.19	-	-
Criminal damage & arson	338	13.39	9.56	10.19	9.40

*annual crime rate per 1,000 population

Fire incidences - accidental dwelling fires (North Wales Fire and Rescue Service, three year data 2013-2016)

Incidents	20	three year average
Casualties (injuries & fatalities)	1	three year total

Economy & employment

Industry of employment (Census 2011)

	Area 2		Flintshire	Wales	E & W
	Number	%			
All in employment (aged 16-74)	12,204		74,049	1,363,615	26,526,336
Agriculture, forestry & fishing	53	0.4%	0.9%	1.7%	0.9%
Mining, quarrying, energy, water	256	2.1%	2.0%	1.9%	1.5%
Manufacturing	2,855	23.4%	18.9%	10.5%	8.9%
Construction	790	6.5%	7.7%	8.2%	7.7%
Wholesale & retail	2,303	18.9%	16.3%	15.6%	15.9%
Transport & storage	572	4.7%	4.1%	3.9%	5.0%
Accommodation & food services	564	4.6%	5.2%	6.2%	5.6%
Communication, finance, property	734	6.0%	6.8%	6.6%	9.7%
Professional, scientific, technical	411	3.4%	4.5%	4.3%	6.6%
Administrative & support services	657	5.4%	4.4%	4.0%	4.9%
Public administration & defence	612	5.0%	5.7%	7.9%	6.0%
Education	858	7.0%	8.6%	10.1%	9.9%
Health & social work	1,134	9.3%	11.1%	14.5%	12.5%
Other	405	3.3%	3.8%	4.5%	5.0%
No qualifications (all aged 16+)	5,029	25.2%	23.5%	25.9%	22.7%
Level 4+ qualification	3,315	16.6%	22.4%	24.5%	27.2%

Social class (Census, 2011)

	Area 2		Flintshire	Wales	E & W
	Number	%			
All aged 16-74	18,338		112,325	2,245,166	41,126,540
Managerial & professional	4,089	22.3%	28.0%	27.4%	31.1%
Skilled	5,619	30.6%	31.6%	29.4%	29.1%
Part / unskilled	6,456	35.2%	30.2%	28.8%	25.2%
Students & other	2,174	11.9%	10.2%	14.5%	14.6%

Unemployment (claimant count) (NOMIS, 2016)

	Area 2		Flintshire	Wales	GB
Dec-15	285	1.8%	1.6%	2.2%	1.7%
Mar-16	325	2.0%	1.7%	2.4%	1.9%
Jun-16	315	1.9%	1.6%	2.2%	1.8%
Sep-16	315	1.9%	1.6%	2.2%	1.8%
Claimants aged 16-24 (Sep-16)*	80	25.4%	26.1%	25.8%	22.5%
Claimants aged 50+ (Sep-16)*	70	22.2%	21.5%	22.1%	23.8%

* Rounded to nearest 5. % is of all claimants.

Well-being of future generations - community assessment

Flintshire area 2

Income & benefits

Household income (CACI PayCheck, 2015)

	Area 2		Flintshire	Wales	GB
	£	%			
Median income	24,950		27,300	24,250	28,700
Lower quartile	13,950		15,000	13,600	15,450
Households below 60% GB median (= £17,173)		33.3%	30.1%	34.5%	28.8%

Benefits (NOMIS, 2016)

	Area 2		Flintshire	Wales	GB
	Number	%			
February 2015					
All working age client group*	2,125	13.5%	12.3%	16.3%	12.5%
Job seekers*	255	1.6%	1.7%	2.5%	2.0%
ESA/incapacity benefits*	1,065	6.8%	6.0%	8.6%	6.3%
Lone parent*	215	1.4%	1.1%	1.3%	1.1%
Other income related*	35	0.2%	0.3%	0.3%	0.3%
All key out of work benefits*	1,570	10.0%	9.1%	12.8%	9.7%
Carers*	295	1.9%	1.7%	2.0%	1.5%
Disabled*	210	1.3%	1.3%	1.3%	1.1%
Bereaved*	50	0.3%	0.2%	0.2%	0.2%
Pension credit**	895	19.8%	17.6%	20.3%	18.6%
February 2016					
All working age client group*	1,940	12.3%	11.2%	15.2%	11.8%
Job seekers*	135	0.9%	1.0%	1.9%	1.5%
Incapacity benefits*	1,050	6.7%	5.9%	8.4%	6.2%
Lone parent*	200	1.3%	1.0%	1.2%	1.1%
Other income related*	15	0.1%	0.2%	0.3%	0.2%
All key out of work benefits*	1,400	8.9%	8.1%	11.8%	9.0%
Carers*	320	2.0%	1.8%	2.1%	1.6%
Disabled*	185	1.2%	1.0%	1.1%	1.0%
Bereaved*	35	0.2%	0.2%	0.2%	0.2%
Pension credit**	830	18.3%	16.0%	18.7%	17.1%

* % is of all work age ** % is of all receiving state pension

Poverty and deprivation

Children in families receiving tax credits (HMRC, 2016)

	Area 2		Flintshire	Wales	GB
Children in in-work families	2,260	40.3%	38.0%	40.0%	38.8%
Children in out-of-work families	1,195	21.3%	17.7%	22.1%	19.8%
Total	3,455	61.6%	55.7%	62.1%	58.6%

As % all children. In work is working 16 hrs a week or more

Welsh index of multiple deprivation (Welsh Government, 2014)

	Area 2		Flintshire	
Total LSOAs in area	16		92	
No. LSOAs in most deprived:	10%	25%	10%	25%
In each deprivation domain				
Overall Index	1	4	2	16
Income	1	4	4	13
Employment	1	3	2	9
Health	0	4	2	10
Education	1	4	4	18
Access to services	0	2	3	20
Community safety	2	6	8	20
Physical environment	9	12	32	48
Housing	3	7	6	26

Deprivation data shows how many lower super output areas (LSOAs) in the area are in the 10% and 25% most deprived LSOAs in Wales.

Flintshire community area 3

Located along the Dee estuary the area includes the town of Flint and community of Bagillt. It contains the following lower super output areas (LSOAs) and wards (electoral divisions).

Area 3			
LSOA		Ward (electoral district)	
W01000253	Bagillt East	W05000182	Bagillt East
W01000254	Bagillt West	W05000183	Bagillt West
W01000288	Flint Castle	W05000200	Flint Castle
W01000289	Flint Coleshill 1	W05000201	Flint Coleshill
W01000290	Flint Coleshill 2	W05000202	Flint Oakenholt
W01000291	Flint Coleshill 3	W05000203	Flint Trelawny
W01000292	Flint Oakenholt 1		
W01000293	Flint Oakenholt 2		
W01000294	Flint Trelawny 1		
W01000295	Flint Trelawny 2		

Flint, famous for its Castle, is currently subject to a regeneration programme that will renovate its historic buildings, refurbish its town centre and create high quality housing, health and community facilities. Bagillt, historically a mining and mill town, is an extensive settlement, surrounded at the South and West by agricultural land.

Flintshire area 3

Key points

Population characteristics - age structure similar to GB average. No net population growth in past 10 years. Population density relatively high. Ethnicity & religion significantly less diverse than England & Wales averages, but high proportion of 'other white' ethnic group compared to Wales as a whole. Welsh speakers well below Welsh average.

Health - limiting long term illness above England & Wales level, similar to Wales average. High levels of hypertension compared to Wales average.

Housing and living arrangements - higher proportion of households with children - including lone parent households - than national average. Overcrowding and lack of central heating levels below national average. Renting from social landlords above national level. House prices well below Welsh average.

Community safety - crime rates low compared to national averages, but high for criminal damage & arson.

Economy - employment in professional/technical/scientific, communications/finance/property, education and health & social work industries slightly low compared to national figures. Comparatively high employment in manufacturing. Qualification levels low compared to national figures. Proportion of people in part/low skilled socio-economic grouping well above Wales and England & Wales average. Unemployed claimant rate higher than GB average.

Income and benefits - income levels well below national average. Proportion of people claiming benefits below Wales level, but higher than England & Wales, particularly for those claiming incapacity benefits.

Poverty and deprivation - high proportion of children in families claiming Working Tax Credits - particularly 'in-work' families. Higher than average levels of deprivation in the community safety and physical environment domains of the Welsh Index of Multiple Deprivation.

These statistics may be used under the terms of the Open Government Licence.

Produced by the Corporate Research and Information Unit, Conwy County Borough Council

Population characteristics

Population, age and gender 2014 (ONS MYE)

	Area 3		Flintshire	Wales	GB
	Number	%	%	%	%
Mid-year population 2004	16,900	Change	Change	Change	Change
Mid-year population 2014	16,900	0.0%	2.8%	4.9%	7.8%
Males	8,350	49.3%	49.3%	49.2%	49.2%
Females	8,550	50.7%	50.7%	50.8%	50.8%
Aged 0-15	3,300	19.6%	18.5%	18.0%	18.8%
Aged 16-29	2,900	17.3%	16.4%	18.2%	18.3%
Aged 30-44	3,050	18.1%	18.1%	18.0%	19.7%
Aged 45-64	4,550	27.1%	27.3%	26.3%	25.5%
Aged 65+	3,050	17.9%	19.7%	19.5%	17.7%
Population density 2014 (persons/ha)		5.93	3.51	1.49	4.16

Population characteristics (Census 2011)

	Area 3		Flintshire	Wales	E & W
	Number	%			
Born in Wales	11,424	66.7%	50.0%	72.7%	4.9%
Born outside the UK	911	5.3%	4.2%	5.5%	13.4%
Ethnicity - white British	16,196	94.6%	95.9%	93.2%	80.5%
Other white	678	4.0%	2.6%	2.4%	5.5%
Mixed ethnic group	88	0.5%	0.6%	1.0%	2.2%
Other ethnic groups	156	0.9%	1.0%	3.4%	11.8%
Religion - Christian	11,755	68.7%	66.4%	57.6%	59.3%
Other religion	129	0.8%	0.9%	2.7%	8.4%
No religion	4,091	23.9%	25.4%	32.1%	25.1%
(of persons aged 3+)					
Speak Welsh	2,025	12.3%	13.2%	19.0%	-
No skills in Welsh	13,171	80.2%	79.4%	73.3%	-

Flintshire area 3

Health

Health and provision of care (Census 2011)

	Area 3		Flintshire	Wales	E & W
	Number	%			
People with limiting long term illness	3,703	21.6%	19.5%	22.7%	17.9%
People providing unpaid care	1,944	11.4%	11.6%	12.1%	10.3%

Patients with chronic illness, by GP cluster (General Medical Services QOF 2015-16)

	Area 3		Flintshire	Wales
Cluster name	North west Flintshire			
Hypertension (high blood pressure)		16.7%	16.0%	15.6%
Asthma		6.8%	7.0%	6.9%
Diabetes		6.0%	5.6%	5.9%
Coronary heart disease		3.7%	3.8%	3.8%
Chronic obstructive pulmonary disease*		2.5%	2.3%	2.2%
Epilepsy		0.7%	0.7%	0.8%
Heart failure		0.9%	1.0%	1.0%
Cancer		2.3%	2.8%	2.6%
Dementia		0.5%	0.5%	0.6%

* lung diseases including chronic bronchitis and emphysema

Based on clusters of GP surgeries as identified by local health boards. The health boards have formally developed arrangements for small groups of GP practices to work collaboratively to develop services in the community, serving populations of between 30 and 50 thousand patients. Clusters are best fit to the sub areas and do not exactly match the same boundaries.

Housing and living arrangements

Households (Census, 2011)

	Area 3		Flintshire	Wales	E & W
	Number	%			
Total households	6,966		63,781	1,302,676	23,366,044
All one person household	1,930	27.7%	27.4%	30.8%	30.2%
- one person; aged 65+	901	12.9%	12.9%	13.7%	12.4%
All households with dependent children	2,231	32.0%	29.7%	28.2%	29.1%
- lone parents with dependents	633	9.1%	7.0%	7.5%	7.2%
All households of only pensioners	1,457	20.9%	22.2%	22.9%	20.9%
Population in private households	16,968	99.1%	99.5%	98.3%	98.2%
Average household size	2.44			2.31	2.36

Household facilities

No central heating	122	1.8%	1.6%	2.3%	2.7%
Overcrowded	356	5.1%	3.8%	5.2%	8.5%
Average rooms per household	5.5		5.8	5.7	5.4
No car	1,630	23.4%	17.0%	22.9%	25.6%

Tenure

Owner occupied	4,635	66.5%	73.4%	67.8%	64.3%
Rented from social landlord	1,586	22.8%	15.1%	16.5%	17.6%
Other rented	745	10.7%	11.5%	15.7%	18.0%

Dwellings by council tax band (Neighbourhood Stats, March 2011)

	Area 3		Flintshire	Wales
	Number	%		
Total dwellings	7,240	100%	65,332	1,375,592
Band A	667	9.2%	6.1%	14.9%
Band B	1,857	25.6%	14.0%	21.3%
Band C	2,683	37.1%	30.1%	21.7%
Band D	908	12.5%	18.5%	16.0%
Band E	669	9.2%	15.1%	13.1%
Band F	346	4.8%	10.2%	8.0%
Band G	89	1.2%	4.6%	3.7%
Band H	15	0.2%	0.9%	0.9%
Band I	6	0.1%	0.3%	0.4%

Flintshire area 3

House prices (Land Registry, 2015; CACI PayCheck, 2015)

	Area 3	Flintshire	Wales	E & W
Median (All house types)	£ 129,973	£ 150,000	£ 140,000	£ 203,995
Lower quartile (All house types)	£ 100,250	£ 116,500	£ 100,000	£ 135,000
Ratio income:houseprice (median)	5.7	5.5	5.8	7.1
Ratio income:houseprice (lower quartile)	7.7	7.8	7.4	8.7

Community safety

Crime incidences (North Wales Police, 2016)

	Area 3		Flintshire	Wales	E & W
	Number	Rate*			
All crime incidences 2015/16	944	55.87	47.01	61.16	78.63
Violence against the person	264	15.62	12.96	16.84	17.32
Theft & handling	188	11.13	10.19	-	-
Criminal damage & arson	224	13.26	9.56	10.19	9.40

*annual crime rate per 1,000 population

Fire incidences - accidental dwelling fires (North Wales Fire and Rescue Service, three year data 2013-2016)

Incidents	11	three year average
Casualties (injuries & fatalities)	4	three year total

Economy & employment

Industry of employment (Census 2011)

	Area 3		Flintshire	Wales	E & W
	Number	%			
All in employment (aged 16-74)	7,969		74,049	1,363,615	26,526,336
Agriculture, forestry & fishing	52	0.7%	0.9%	1.7%	0.9%
Mining, quarrying, energy, water	188	2.4%	2.0%	1.9%	1.5%
Manufacturing	2,046	25.7%	18.9%	10.5%	8.9%
Construction	583	7.3%	7.7%	8.2%	7.7%
Wholesale & retail	1,281	16.1%	16.3%	15.6%	15.9%
Transport & storage	403	5.1%	4.1%	3.9%	5.0%
Accommodation & food services	400	5.0%	5.2%	6.2%	5.6%
Communication, finance, property	362	4.5%	6.8%	6.6%	9.7%
Professional, scientific, technical	233	2.9%	4.5%	4.3%	6.6%
Administrative & support services	374	4.7%	4.4%	4.0%	4.9%
Public administration & defence	373	4.7%	5.7%	7.9%	6.0%
Education	571	7.2%	8.6%	10.1%	9.9%
Health & social work	808	10.1%	11.1%	14.5%	12.5%
Other	295	3.7%	3.8%	4.5%	5.0%
No qualifications (all aged 16+)	4,123	30.2%	23.5%	25.9%	22.7%
Level 4+ qualification	2,012	14.7%	22.4%	24.5%	27.2%

Social class (Census, 2011)

	Area 3		Flintshire	Wales	E & W
	Number	%			
All aged 16-74	12,381		112,325	2,245,166	41,126,540
Managerial & professional	2,443	19.7%	28.0%	27.4%	31.1%
Skilled	3,576	28.9%	31.6%	29.4%	29.1%
Part / unskilled	4,949	40.0%	30.2%	28.8%	25.2%
Students & other	1,413	11.4%	10.2%	14.5%	14.6%

Unemployment (claimant count) (NOMIS, 2016)

	Area 3		Flintshire	Wales	GB
Dec-15	205	1.9%	1.6%	2.2%	1.7%
Mar-16	240	2.3%	1.7%	2.4%	1.9%
Jun-16	225	2.1%	1.6%	2.2%	1.8%
Sep-16	255	2.4%	1.6%	2.2%	1.8%
Claimants aged 16-24 (Sep-16)*	55	21.6%	26.1%	25.8%	22.5%
Claimants aged 50+ (Sep-16)*	55	21.6%	21.5%	22.1%	23.8%

* Rounded to nearest 5. % is of all claimants.

Well-being of future generations - community assessment

Flintshire area 3

Income & benefits

Household income (CACI PayCheck, 2015)

	Area 3		Flintshire	Wales	GB
	£	%			
Median income	22,900		27,300	24,250	28,700
Lower quartile	12,950		15,000	13,600	15,450
Households below 60% GB median (= £17,173)		36.8%	30.1%	34.5%	28.8%

Benefits (NOMIS, 2016)

	Area 3		Flintshire	Wales	GB
	Number	%			
February 2015					
All working age client group*	1,580	15.0%	12.3%	16.3%	12.5%
Job seekers*	230	2.2%	1.7%	2.5%	2.0%
ESA/incapacity benefits*	755	7.2%	6.0%	8.6%	6.3%
Lone parent*	140	1.3%	1.1%	1.3%	1.1%
Other income related*	45	0.4%	0.3%	0.3%	0.3%
All key out of work benefits*	1,170	11.1%	9.1%	12.8%	9.7%
Carers*	235	2.2%	1.7%	2.0%	1.5%
Disabled*	160	1.5%	1.3%	1.3%	1.1%
Bereaved*	15	0.1%	0.2%	0.2%	0.2%
Pension credit**	820	24.7%	17.6%	20.3%	18.6%
February 2016					
All working age client group*	1,470	13.9%	11.2%	15.2%	11.8%
Job seekers*	155	1.5%	1.0%	1.9%	1.5%
Incapacity benefits*	750	7.1%	5.9%	8.4%	6.2%
Lone parent*	140	1.3%	1.0%	1.2%	1.1%
Other income related*	30	0.3%	0.2%	0.3%	0.2%
All key out of work benefits*	1,075	10.2%	8.1%	11.8%	9.0%
Carers*	240	2.3%	1.8%	2.1%	1.6%
Disabled*	145	1.4%	1.0%	1.1%	1.0%
Bereaved*	10	0.1%	0.2%	0.2%	0.2%
Pension credit**	730	22.0%	16.0%	18.7%	17.1%

* % is of all work age ** % is of all receiving state pension

Poverty and deprivation

Children in families receiving tax credits (HMRC, 2016)

	Area 3		Flintshire	Wales	GB
Children in in-work families	1,695	43.5%	38.0%	40.0%	38.8%
Children in out-of-work families	805	20.7%	17.7%	22.1%	19.8%
Total	2,500	64.2%	55.7%	62.1%	58.6%

As % all children. In work is working 16 hrs a week or more

Welsh index of multiple deprivation (Welsh Government, 2014)

	Area 3		Flintshire	
Total LSOAs in area	10		92	
No. LSOAs in most deprived:	10%	25%	10%	25%
In each deprivation domain				
Overall Index	0	4	2	16
Income	0	3	4	13
Employment	0	2	2	9
Health	1	1	2	10
Education	1	3	4	18
Access to services	0	1	3	20
Community safety	2	2	8	20
Physical environment	5	6	32	48
Housing	1	6	6	26

Deprivation data shows how many lower super output areas (LSOAs) in the area are in the 10% and 25% most deprived LSOAs in Wales.

Flintshire community area 4

Includes the market town of Mold and the communities of Cilcain; Gwernaffield; Gwernymynydd; Leeswood; Llanfynydd; Nannerch; Nercwys; Northop; Treuddyn; which are scattered across a wide rural hinterland. It contains the following lower super output areas (LSOAs) and wards (electoral divisions).

Area 4			
LSOA		Ward (electoral district)	
W01000272	Cilcain	W05000193	Cilcain
W01000299	Gwernaffield	W05000206	Gwernaffield
W01000300	Gwernymynydd	W05000207	Gwernymynydd
W01000309	Leeswood	W05000215	Leeswood
W01000310	Llanfynydd	W05000216	Llanfynydd
W01000313	Mold Broncoed 1	W05000218	Mold Broncoed
W01000314	Mold Broncoed 2	W05000219	Mold East
W01000315	Mold East	W05000220	Mold South
W01000316	Mold South 1	W05000221	Mold West
W01000317	Mold South 2	W05000224	Northop
W01000318	Mold West 1	W05000235	Treuddyn
W01000319	Mold West 2		
W01000323	Northop 1		
W01000324	Northop 2		
W01000339	Treuddyn		

With a number of heritage assets including Bailey Hill castle site, St. Mary's Church and the historic court house, Mold retains a vibrant historic shopping area supported by a successful twice-weekly market. The wider rural area includes part of the Clwydian Hills and Dee Valley Area of Outstanding Natural Beauty as well as part of the popular Loggerheads Country Park.

Flintshire area 4

Key points

Population characteristics - age structure older than GB and Wales averages, with noticeable dip in 16-29 age group. Low net population growth in past 10 years. Population density relatively low. Ethnicity & religion significantly less diverse than England & Wales average. Welsh speakers higher than other Flintshire sub areas - comparable to Welsh average.

Health - limiting long term illness below Wales average, but proportion of people providing unpaid care slightly higher. Higher levels of hypertension and asthma than Wales average.

Housing and living arrangements - higher proportion of pensioner only households than national average. Overcrowding and lack of central heating levels below national average, as is proportion of households with no car. High levels of owner occupation & low levels of renting from both social landlords and other. House prices well below Welsh average.

Community safety - crime rates low compared to national averages.

Economy - employment in communications/finance/property industries low compared to national figures. Comparatively high employment in manufacturing and education. Employment in professional/technical/scientific industries high compared to Wales and Flintshire averages. Qualification levels high compared to national figures. Proportion of people in managerial/professional/high skilled socio-economic groupings above Welsh average. Unemployed claimant rate lower than Wales and GB level. Young people (aged 16-24) make up a larger proportion of unemployed claimants than average.

Income and benefits - income levels well above national average. Proportion of people claiming benefits below national levels.

Poverty and deprivation - relatively low proportion of children in families claiming Working Tax Credits. Higher than average levels of deprivation in the physical environment domain of the Welsh Index of Multiple Deprivation.

These statistics may be used under the terms of the Open Government Licence.

Produced by the Corporate Research and Information Unit, Conwy County Borough Council

Population characteristics

Population, age and gender 2014 (ONS MYE)

	Area 4		Flintshire	Wales	GB
	Number	%	%	%	%
Mid-year population 2004	24,050	Change	Change	Change	Change
Mid-year population 2014	24,500	1.8%	2.8%	4.9%	7.8%
Males	11,900	48.7%	49.3%	49.2%	49.2%
Females	12,550	51.3%	50.7%	50.8%	50.8%
Aged 0-15	4,350	17.8%	18.5%	18.0%	18.8%
Aged 16-29	3,450	14.0%	16.4%	18.2%	18.3%
Aged 30-44	3,900	15.9%	18.1%	18.0%	19.7%
Aged 45-64	7,150	29.2%	27.3%	26.3%	25.5%
Aged 65+	5,650	23.1%	19.7%	19.5%	17.7%
Population density 2014 (persons/ha)		1.90	3.51	1.49	4.16

Population characteristics (Census 2011)

	Area 4		Flintshire	Wales	E & W
	Number	%			
Born in Wales	13,651	56.3%	50.0%	72.7%	4.9%
Born outside the UK	802	3.3%	4.2%	5.5%	13.4%
Ethnicity - white British	23,537	97.0%	95.9%	93.2%	80.5%
Other white	405	1.7%	2.6%	2.4%	5.5%
Mixed ethnic group	132	0.5%	0.6%	1.0%	2.2%
Other ethnic groups	187	0.8%	1.0%	3.4%	11.8%
Religion - Christian	16,301	67.2%	66.4%	57.6%	59.3%
Other religion	262	1.1%	0.9%	2.7%	8.4%
No religion	5,980	24.6%	25.4%	32.1%	25.1%
(of persons aged 3+)					
Speak Welsh	4,463	19.0%	13.2%	19.0%	-
No skills in Welsh	16,843	71.7%	79.4%	73.3%	-

Flintshire area 4

Health

Health and provision of care (Census 2011)

	Area 4		Flintshire	Wales	E & W
	Number	%			
People with limiting long term illness	4,540	18.7%	19.5%	22.7%	17.9%
People providing unpaid care	2,991	12.3%	11.6%	12.1%	10.3%

Patients with chronic illness, by GP cluster (General Medical Services QOF 2015-16)

	Area 4		Flintshire	Wales
Cluster name	South Flintshire (best fit)			
Hypertension (high blood pressure)		16.4%	16.0%	15.6%
Asthma		7.5%	7.0%	6.9%
Diabetes		5.7%	5.6%	5.9%
Coronary heart disease		3.9%	3.8%	3.8%
Chronic obstructive pulmonary disease*		2.1%	2.3%	2.2%
Epilepsy		0.7%	0.7%	0.8%
Heart failure		1.0%	1.0%	1.0%
Cancer		3.3%	2.8%	2.6%
Dementia		0.6%	0.5%	0.6%

* lung diseases including chronic bronchitis and emphysema

Based on clusters of GP surgeries as identified by local health boards. The health boards have formally developed arrangements for small groups of GP practices to work collaboratively to develop services in the community, serving populations of between 30 and 50 thousand patients. Clusters are best fit to the sub areas and do not exactly match the same boundaries.

Housing and living arrangements

Households (Census, 2011)

	Area 4		Flintshire	Wales	E & W
	Number	%			
Total households	10,289		63,781	1,302,676	23,366,044
All one person household	2,808	27.3%	27.4%	30.8%	30.2%
- one person; aged 65+	1,412	13.7%	12.9%	13.7%	12.4%
All households with dependent children	2,880	28.0%	29.7%	28.2%	29.1%
- lone parents with dependents	601	5.8%	7.0%	7.5%	7.2%
All households of only pensioners	2,569	25.0%	22.2%	22.9%	20.9%
Population in private households	24,129	99.5%	99.5%	98.3%	98.2%
Average household size	2.35			2.31	2.36

Household facilities

No central heating	166	1.6%	1.6%	2.3%	2.7%
Overcrowded	323	3.1%	3.8%	5.2%	8.5%
Average rooms per household	6.1		5.8	5.7	5.4
No car	1,458	14.2%	17.0%	22.9%	25.6%

Tenure

Owner occupied	7,883	76.6%	73.4%	67.8%	64.3%
Rented from social landlord	1,302	12.7%	15.1%	16.5%	17.6%
Other rented	1,104	10.7%	11.5%	15.7%	18.0%

Dwellings by council tax band (Neighbourhood Stats, March 2011)

	Area 4		Flintshire	Wales
	Number	%		
Total dwellings	10,512	100%	65,332	1,375,592
Band A	275	2.6%	6.1%	14.9%
Band B	1,052	10.0%	14.0%	21.3%
Band C	2,397	22.8%	30.1%	21.7%
Band D	2,003	19.1%	18.5%	16.0%
Band E	1,749	16.6%	15.1%	13.1%
Band F	1,733	16.5%	10.2%	8.0%
Band G	1,002	9.5%	4.6%	3.7%
Band H	193	1.8%	0.9%	0.9%
Band I	108	1.0%	0.3%	0.4%

Flintshire area 4

House prices (Land Registry, 2015; CACI PayCheck, 2015)

	Area 4	Flintshire	Wales	E & W
Median (All house types)	£ 168,000	£ 150,000	£ 140,000	£ 203,995
Lower quartile (All house types)	£ 125,000	£ 116,500	£ 100,000	£ 135,000
Ratio income:houseprice (median)	5.6	5.5	5.8	7.1
Ratio income:houseprice (lower quartile)	7.7	7.8	7.4	8.7

Community safety

Crime incidences (North Wales Police, 2016)

	Area 4		Flintshire	Wales	E & W
	Number	Rate*			
All crime incidences 2015/16	956	39.05	47.01	61.16	78.63
Violence against the person	237	9.68	12.96	16.84	17.32
Theft & handling	239	9.76	10.19	-	-
Criminal damage & arson	166	6.78	9.56	10.19	9.40

*annual crime rate per 1,000 population

Fire incidences - accidental dwelling fires (North Wales Fire and Rescue Service, three year data 2013-2016)

Incidents	12	three year average
Casualties (injuries & fatalities)	1	three year total

Economy & employment

Industry of employment (Census 2011)

	Area 4		Flintshire	Wales	E & W
	Number	%			
All in employment (aged 16-74)	11,485		74,049	1,363,615	26,526,336
Agriculture, forestry & fishing	156	1.4%	0.9%	1.7%	0.9%
Mining, quarrying, energy, water	200	1.7%	2.0%	1.9%	1.5%
Manufacturing	1,690	14.7%	18.9%	10.5%	8.9%
Construction	899	7.8%	7.7%	8.2%	7.7%
Wholesale & retail	1,593	13.9%	16.3%	15.6%	15.9%
Transport & storage	391	3.4%	4.1%	3.9%	5.0%
Accommodation & food services	608	5.3%	5.2%	6.2%	5.6%
Communication, finance, property	731	6.4%	6.8%	6.6%	9.7%
Professional, scientific, technical	655	5.7%	4.5%	4.3%	6.6%
Administrative & support services	463	4.0%	4.4%	4.0%	4.9%
Public administration & defence	823	7.2%	5.7%	7.9%	6.0%
Education	1,403	12.2%	8.6%	10.1%	9.9%
Health & social work	1,372	11.9%	11.1%	14.5%	12.5%
Other	501	4.4%	3.8%	4.5%	5.0%
No qualifications (all aged 16+)	4,084	20.5%	23.5%	25.9%	22.7%
Level 4+ qualification	6,208	31.1%	22.4%	24.5%	27.2%

Social class (Census, 2011)

	Area 4		Flintshire	Wales	E & W
	Number	%			
All aged 16-74	17,794		112,325	2,245,166	41,126,540
Managerial & professional	6,291	35.4%	28.0%	27.4%	31.1%
Skilled	5,551	31.2%	31.6%	29.4%	29.1%
Part / unskilled	4,247	23.9%	30.2%	28.8%	25.2%
Students & other	1,705	9.6%	10.2%	14.5%	14.6%

Unemployment (claimant count) (NOMIS, 2016)

	Area 4		Flintshire	Wales	GB
Dec-15	210	1.4%	1.6%	2.2%	1.7%
Mar-16	220	1.5%	1.7%	2.4%	1.9%
Jun-16	210	1.4%	1.6%	2.2%	1.8%
Sep-16	235	1.6%	1.6%	2.2%	1.8%
Claimants aged 16-24 (Sep-16)*	75	31.9%	26.1%	25.8%	22.5%
Claimants aged 50+ (Sep-16)*	45	19.1%	21.5%	22.1%	23.8%

* Rounded to nearest 5. % is of all claimants.

Well-being of future generations - community assessment

Flintshire area 4

Income & benefits

Household income (CACI PayCheck, 2015)

	Area 4		Flintshire	Wales	GB
	£	%			
Median income	29,750		27,300	24,250	28,700
Lower quartile	16,250		15,000	13,600	15,450
Households below 60% GB median (= £17,173)		27.0%	30.1%	34.5%	28.8%

Benefits (NOMIS, 2016)

	Area 4		Flintshire	Wales	GB
	Number	%			
February 2015					
All working age client group*	1,495	10.1%	12.3%	16.3%	12.5%
Job seekers*	210	1.4%	1.7%	2.5%	2.0%
ESA/incapacity benefits*	725	4.9%	6.0%	8.6%	6.3%
Lone parent*	125	0.8%	1.1%	1.3%	1.1%
Other income related*	35	0.2%	0.3%	0.3%	0.3%
All key out of work benefits*	1,095	7.4%	9.1%	12.8%	9.7%
Carers*	190	1.3%	1.7%	2.0%	1.5%
Disabled*	155	1.1%	1.3%	1.3%	1.1%
Bereaved*	55	0.4%	0.2%	0.2%	0.2%
Pension credit**	785	13.1%	17.6%	20.3%	18.6%
February 2016					
All working age client group*	1,340	9.1%	11.2%	15.2%	11.8%
Job seekers*	145	1.0%	1.0%	1.9%	1.5%
Incapacity benefits*	685	4.6%	5.9%	8.4%	6.2%
Lone parent*	120	0.8%	1.0%	1.2%	1.1%
Other income related*	25	0.2%	0.2%	0.3%	0.2%
All key out of work benefits*	975	6.6%	8.1%	11.8%	9.0%
Carers*	205	1.4%	1.8%	2.1%	1.6%
Disabled*	120	0.8%	1.0%	1.1%	1.0%
Bereaved*	40	0.3%	0.2%	0.2%	0.2%
Pension credit**	720	11.8%	16.0%	18.7%	17.1%

* % is of all work age ** % is of all receiving state pension

Poverty and deprivation

Children in families receiving tax credits (HMRC, 2016)

	Area 4		Flintshire	Wales	GB
Children in in-work families	1,530	34.8%	38.0%	40.0%	38.8%
Children in out-of-work families	645	14.7%	17.7%	22.1%	19.8%
Total	2,175	49.4%	55.7%	62.1%	58.6%

As % all children. In work is working 16 hrs a week or more

Welsh index of multiple deprivation (Welsh Government, 2014)

	Area 4		Flintshire	
Total LSOAs in area	15		92	
No. LSOAs in most deprived:	10%	25%	10%	25%
In each deprivation domain				
Overall Index	0	2	2	16
Income	2	2	4	13
Employment	0	1	2	9
Health	0	1	2	10
Education	1	1	4	18
Access to services	0	7	3	20
Community safety	1	2	8	20
Physical environment	5	6	32	48
Housing	0	2	6	26

Deprivation data shows how many lower super output areas (LSOAs) in the area are in the 10% and 25% most deprived LSOAs in Wales.

Flintshire community area 5

Includes the market town of Holywell and the communities of Brynford; Caerwys; Halkyn; Llanasa; Mostyn; Trelawnyd & Gwaenysgor; Whitford. Located along the coastline of the Dee Estuary the area also includes the tourist hub at Talacre, with a major concentration of holiday parks, and a popular beach that also attracts day visitors. It contains the following lower super output areas (LSOAs) and wards (electoral divisions).

Area 5			
LSOA		Ward (electoral district)	
W01000258	Brynford	W05000186	Brynford
W01000270	Caerwys 1	W05000192	Caerwys
W01000271	Caerwys 2	W05000199	Ffynnongroyw
W01000287	Ffynnongroyw	W05000204	Greenfield
W01000296	Greenfield 1	W05000205	Gronant
W01000297	Greenfield 2	W05000208	Halkyn
W01000298	Gronant	W05000211	Holywell Central
W01000301	Halkyn	W05000212	Holywell East
W01000304	Holywell Central	W05000213	Holywell West
W01000305	Holywell East	W05000222	Mostyn
W01000306	Holywell West	W05000234	Trelawnyd and Gwaenysgor
W01000320	Mostyn (Flintshire)	W05000236	Whitford
W01000338	Trelawnyd and Gwaenysgor		
W01000340	Whitford		

Recent investment in Holywell's historic buildings makes it uniquely attractive. The town also borders Greenfield Valley, which includes the Holy Well, country park & education centre, Basingwerk Abbey and access to the Dee at Greenfield Dock. The upland areas of the Clwydian Hills and Dee Valley Area of Outstanding Natural Beauty and Halkyn Common form an attractive and popular backdrop.

Flintshire area 5

Key points

Population characteristics - age structure older than GB, Wales and Flintshire averages, with noticeable dip in 16-29 age group. Population total decreased in past 10 years. Population density relatively low. Ethnicity & religion significantly less diverse than average. Welsh speakers comparable to Welsh average.

Health - limiting long term illness above England & Wales average and slightly higher than Flintshire figure, as is proportion of unpaid carers. Higher levels of hypertension than Wales average.

Housing and living arrangements - higher proportion of pensioner only households than national average. Overcrowding levels below national average, as is proportion of households with no car. High levels of owner occupation. House prices below Welsh average.

Community safety - crime rates low compared to national level but above Flintshire average.

Economy - employment in communications/finance/property and professional/technical/scientific industries low. Comparatively high employment in manufacturing. Employment in health & social work high compared to GB and Flintshire averages. Qualification levels low compared to national figures. Unemployed claimant rate lower than Wales level. Young people (aged 16-24) make up a larger proportion of unemployed claimants than average.

Income and benefits - income levels below GB and Flintshire average but above Welsh figure. Proportion of people claiming benefits low compared to Wales but high for Flintshire.

Poverty and deprivation - the proportion of children in families claiming Working Tax Credits is slightly below the Wales level but higher than GB averages. Higher than expected levels of deprivation in the access to services domain of the Welsh Index of Multiple Deprivation.

These statistics may be used under the terms of the Open Government Licence.

Produced by the Corporate Research and Information Unit, Conwy County Borough Council

Population characteristics

Population, age and gender 2014 (ONS MYE)

	Area 5		Flintshire	Wales	GB
	Number	%	%	%	%
Mid-year population 2004	25,300	Change	Change	Change	Change
Mid-year population 2014	24,900	-1.7%	2.8%	4.9%	7.8%
Males	12,300	49.4%	49.3%	49.2%	49.2%
Females	12,600	50.6%	50.7%	50.8%	50.8%
Aged 0-15	4,400	17.7%	18.5%	18.0%	18.8%
Aged 16-29	3,950	15.8%	16.4%	18.2%	18.3%
Aged 30-44	4,050	16.2%	18.1%	18.0%	19.7%
Aged 45-64	7,250	29.1%	27.3%	26.3%	25.5%
Aged 65+	5,250	21.2%	19.7%	19.5%	17.7%
Population density 2014 (persons/ha)		1.66	3.51	1.49	4.16

Population characteristics (Census 2011)

	Area 5		Flintshire	Wales	E & W
	Number	%			
Born in Wales	15,042	60.8%	50.0%	72.7%	4.9%
Born outside the UK	674	2.7%	4.2%	5.5%	13.4%
Ethnicity - white British	24,082	97.4%	95.9%	93.2%	80.5%
Other white	364	1.5%	2.6%	2.4%	5.5%
Mixed ethnic group	112	0.5%	0.6%	1.0%	2.2%
Other ethnic groups	174	0.7%	1.0%	3.4%	11.8%
Religion - Christian	16,318	66.0%	66.4%	57.6%	59.3%
Other religion	203	0.8%	0.9%	2.7%	8.4%
No religion	6,189	25.0%	25.4%	32.1%	25.1%
(of persons aged 3+)					
Speak Welsh	4,322	18.1%	13.2%	19.0%	-
No skills in Welsh	17,080	71.6%	79.4%	73.3%	-

Flintshire area 5

Health

Health and provision of care (Census 2011)

	Area 5		Flintshire	Wales	E & W
	Number	%			
People with limiting long term illness	5,540	22.4%	19.5%	22.7%	17.9%
People providing unpaid care	3,064	12.4%	11.6%	12.1%	10.3%

Patients with chronic illness, by GP cluster (General Medical Services QOF 2015-16)

	Area 5		Flintshire	Wales
Cluster name	North west Flintshire (best fit)			
Hypertension (high blood pressure)		16.7%	16.0%	15.6%
Asthma		6.8%	7.0%	6.9%
Diabetes		6.0%	5.6%	5.9%
Coronary heart disease		3.7%	3.8%	3.8%
Chronic obstructive pulmonary disease*		2.5%	2.3%	2.2%
Epilepsy		0.7%	0.7%	0.8%
Heart failure		0.9%	1.0%	1.0%
Cancer		2.3%	2.8%	2.6%
Dementia		0.5%	0.5%	0.6%

* lung diseases including chronic bronchitis and emphysema

Based on clusters of GP surgeries as identified by local health boards. The health boards have formally developed arrangements for small groups of GP practices to work collaboratively to develop services in the community, serving populations of between 30 and 50 thousand patients. Clusters are best fit to the sub areas and do not exactly match the same boundaries.

Housing and living arrangements

Households (Census, 2011)

	Area 5		Flintshire	Wales	E & W
	Number	%			
Total households	10,508		63,781	1,302,676	23,366,044
All one person household	3,047	29.0%	27.4%	30.8%	30.2%
- one person; aged 65+	1,490	14.2%	12.9%	13.7%	12.4%
All households with dependent children	2,909	27.7%	29.7%	28.2%	29.1%
- lone parents with dependents	659	6.3%	7.0%	7.5%	7.2%
All households of only pensioners	2,487	23.7%	22.2%	22.9%	20.9%
Population in private households	24,586	99.4%	99.5%	98.3%	98.2%
Average household size	2.34			2.31	2.36

Household facilities

No central heating	230	2.2%	1.6%	2.3%	2.7%
Overcrowded	353	3.4%	3.8%	5.2%	8.5%
Average rooms per household	5.8		5.8	5.7	5.4
No car	1,766	16.8%	17.0%	22.9%	25.6%

Tenure

Owner occupied	7,562	72.0%	73.4%	67.8%	64.3%
Rented from social landlord	1,703	16.2%	15.1%	16.5%	17.6%
Other rented	1,243	11.8%	11.5%	15.7%	18.0%

Dwellings by council tax band (Neighbourhood Stats, March 2011)

	Area 5		Flintshire	Wales
	Number	%		
Total dwellings	11,137	100%	65,332	1,375,592
Band A	801	7.2%	6.1%	14.9%
Band B	2,653	23.8%	14.0%	21.3%
Band C	2,447	22.0%	30.1%	21.7%
Band D	1,521	13.7%	18.5%	16.0%
Band E	1,323	11.9%	15.1%	13.1%
Band F	1,481	13.3%	10.2%	8.0%
Band G	706	6.3%	4.6%	3.7%
Band H	155	1.4%	0.9%	0.9%
Band I	50	0.4%	0.3%	0.4%

Flintshire area 5

House prices (Land Registry, 2015; CACI PayCheck, 2015)

	Area 5	Flintshire	Wales	E & W
Median (All house types)	£ 134,000	£ 150,000	£ 140,000	£ 203,995
Lower quartile (All house types)	£ 95,500	£ 116,500	£ 100,000	£ 135,000
Ratio income:houseprice (median)	5.2	5.5	5.8	7.1
Ratio income:houseprice (lower quartile)	6.6	7.8	7.4	8.7

Community safety

Crime incidences (North Wales Police, 2016)

	Area 5	Flintshire	Wales	E & W	
	Number	Rate*			
All crime incidences 2015/16	1,265	50.84	47.01	61.16	78.63
Violence against the person	400	16.08	12.96	16.84	17.32
Theft & handling	240	9.65	10.19	-	-
Criminal damage & arson	258	10.37	9.56	10.19	9.40

*annual crime rate per 1,000 population

Fire incidences - accidental dwelling fires (North Wales Fire and Rescue Service, three year data 2013-2016)

Incidents	13	three year average
Casualties (injuries & fatalities)	2	three year total

Economy & employment

Industry of employment (Census 2011)

	Area 5		Flintshire	Wales	E & W
	Number	%			
All in employment (aged 16-74)	11,502		74,049	1,363,615	26,526,336
Agriculture, forestry & fishing	211	1.8%	0.9%	1.7%	0.9%
Mining, quarrying, energy, water	259	2.3%	2.0%	1.9%	1.5%
Manufacturing	1,851	16.1%	18.9%	10.5%	8.9%
Construction	1,063	9.2%	7.7%	8.2%	7.7%
Wholesale & retail	1,644	14.3%	16.3%	15.6%	15.9%
Transport & storage	485	4.2%	4.1%	3.9%	5.0%
Accommodation & food services	724	6.3%	5.2%	6.2%	5.6%
Communication, finance, property	590	5.1%	6.8%	6.6%	9.7%
Professional, scientific, technical	573	5.0%	4.5%	4.3%	6.6%
Administrative & support services	446	3.9%	4.4%	4.0%	4.9%
Public administration & defence	654	5.7%	5.7%	7.9%	6.0%
Education	1,014	8.8%	8.6%	10.1%	9.9%
Health & social work	1,520	13.2%	11.1%	14.5%	12.5%
Other	468	4.1%	3.8%	4.5%	5.0%
No qualifications (all aged 16+)	5,305	26.2%	23.5%	25.9%	22.7%
Level 4+ qualification	4,567	22.5%	22.4%	24.5%	27.2%

Social class (Census, 2011)

	Area 5		Flintshire	Wales	E & W
	Number	%			
All aged 16-74	18,337		112,325	2,245,166	41,126,540
Managerial & professional	5,046	27.5%	28.0%	27.4%	31.1%
Skilled	5,744	31.3%	31.6%	29.4%	29.1%
Part / unskilled	5,606	30.6%	30.2%	28.8%	25.2%
Students & other	1,941	10.6%	10.2%	14.5%	14.6%

Unemployment (claimant count) (NOMIS, 2016)

	Area 5		Flintshire	Wales	GB
Dec-15	310	2.0%	1.6%	2.2%	1.7%
Mar-16	315	2.1%	1.7%	2.4%	1.9%
Jun-16	285	1.9%	1.6%	2.2%	1.8%
Sep-16	260	1.7%	1.6%	2.2%	1.8%
Claimants aged 16-24 (Sep-16)*	80	30.8%	26.1%	25.8%	22.5%
Claimants aged 50+ (Sep-16)*	60	23.1%	21.5%	22.1%	23.8%

* Rounded to nearest 5. % is of all claimants.

Well-being of future generations - community assessment

Flintshire area 5

Income & benefits

Household income (CACI PayCheck, 2015)

	Area 5		Flintshire	Wales	GB
	£	%			
Median income	26,000		27,300	24,250	28,700
Lower quartile	14,400		15,000	13,600	15,450
Households below 60% GB median (= £17,173)		31.8%	30.1%	34.5%	28.8%

Benefits (NOMIS, 2016)

	Area 5		Flintshire	Wales	GB
	Number	%			
February 2015					
All working age client group*	2,510	15.4%	12.3%	16.3%	12.5%
Job seekers*	395	2.4%	1.7%	2.5%	2.0%
ESA/incapacity benefits*	1,300	8.0%	6.0%	8.6%	6.3%
Lone parent*	205	1.3%	1.1%	1.3%	1.1%
Other income related*	45	0.3%	0.3%	0.3%	0.3%
All key out of work benefits*	1,945	11.9%	9.1%	12.8%	9.7%
Carers*	330	2.0%	1.7%	2.0%	1.5%
Disabled*	225	1.4%	1.3%	1.3%	1.1%
Bereaved*	10	0.1%	0.2%	0.2%	0.2%
Pension credit**	1,275	22.0%	17.6%	20.3%	18.6%
February 2016					
All working age client group*	2,290	14.1%	11.2%	15.2%	11.8%
Job seekers*	240	1.5%	1.0%	1.9%	1.5%
Incapacity benefits*	1,260	7.7%	5.9%	8.4%	6.2%
Lone parent*	195	1.2%	1.0%	1.2%	1.1%
Other income related*	35	0.2%	0.2%	0.3%	0.2%
All key out of work benefits*	1,730	10.6%	8.1%	11.8%	9.0%
Carers*	360	2.2%	1.8%	2.1%	1.6%
Disabled*	180	1.1%	1.0%	1.1%	1.0%
Bereaved*	20	0.1%	0.2%	0.2%	0.2%
Pension credit**	1,160	20.0%	16.0%	18.7%	17.1%

* % is of all work age ** % is of all receiving state pension

Poverty and deprivation

Children in families receiving tax credits (HMRC, 2016)

	Area 5		Flintshire	Wales	GB
Children in in-work families	2,055	40.2%	38.0%	40.0%	38.8%
Children in out-of-work families	1,050	20.5%	17.7%	22.1%	19.8%
Total	3,105	60.7%	55.7%	62.1%	58.6%

As % all children. In work is working 16 hrs a week or more

Welsh index of multiple deprivation (Welsh Government, 2014)

	Area 5		Flintshire	
Total LSOAs in area	14		92	
No. LSOAs in most deprived:	10%	25%	10%	25%
In each deprivation domain				
Overall Index	1	3	2	16
Income	1	2	4	13
Employment	1	2	2	9
Health	1	2	2	10
Education	1	3	4	18
Access to services	3	8	3	20
Community safety	1	3	8	20
Physical environment	1	3	32	48
Housing	0	3	6	26

Deprivation data shows how many lower super output areas (LSOAs) in the area are in the 10% and 25% most deprived LSOAs in Wales.

Flintshire community area 6

Dominated primarily by industry and agriculture this area includes the communities of Sealand and Queensferry and the historic village community of Hawarden. It contains the following lower super output areas (LSOAs) and wards (electoral divisions).

Area 6			
LSOA		Ward (electoral district)	
W01000251	Aston 1	W05000181	Aston
W01000252	Aston 2	W05000198	Ewloe
W01000284	Ewloe 1	W05000209	Hawarden
W01000285	Ewloe 2	W05000217	Mancot
W01000286	Ewloe 3	W05000227	Queensferry
W01000302	Hawarden	W05000230	Sealand
W01000311	Mancot 1		
W01000312	Mancot 2		
W01000328	Queensferry		
W01000332	Sealand 1		
W01000333	Sealand 2		

Deeside Industrial Park, one of the largest employment sites in the country sits to the north and is home to a number of international production and manufacturing companies.

Flintshire area 6

Key points

Population characteristics - age structure older than GB but similar to Wales and Flintshire average. Population total increased well above Flintshire and Wales average in past 10 years. Ethnicity & religion significantly less diverse than England & Wales averages, but high proportion of 'other white' ethnic group compared to Wales as a whole. Welsh speakers well below Welsh average.

Health - limiting long term illness below Wales & Flintshire average. Lower levels of chronic illness than Wales average.

Housing and living arrangements - higher proportion of pensioner only households than national average. Overcrowding and lack of central heating levels below national average, as is proportion of households with no car. House prices above Welsh average.

Community safety - crime rates low compared to national level and comparable to Flintshire average.

Economy - employment in health & social work is relatively low. Comparatively high employment in manufacturing. Employment in communications/finance/property work high compared to Wales and Flintshire averages. Qualification levels low compared to national figures. Unemployed claimant rate lower than GB and Wales levels.

Income and benefits - income levels above national average - highest sub area in Flintshire. Low proportion of people claiming out of work benefits.

Poverty and deprivation - the proportion of children in families claiming Working Tax Credits is below national averages. Higher than expected levels of deprivation in the community safety and physical environment domains of the Welsh Index of Multiple Deprivation.

These statistics may be used under the terms of the Open Government Licence.

Produced by the Corporate Research and Information Unit, Conwy County Borough Council

Population characteristics

Population, age and gender 2014 (ONS MYE)

	Area 6		Flintshire	Wales	GB
	Number	%	%	%	%
Mid-year population 2004	18,100	Change	Change	Change	Change
Mid-year population 2014	19,450	7.4%	2.8%	4.9%	7.8%
Males	9,650	49.6%	49.3%	49.2%	49.2%
Females	9,800	50.4%	50.7%	50.8%	50.8%
Aged 0-15	3,600	18.5%	18.5%	18.0%	18.8%
Aged 16-29	3,200	16.5%	16.4%	18.2%	18.3%
Aged 30-44	3,750	19.3%	18.1%	18.0%	19.7%
Aged 45-64	5,150	26.5%	27.3%	26.3%	25.5%
Aged 65+	3,700	19.1%	19.7%	19.5%	17.7%
Population density 2014 (persons/ha)		4.69	3.51	1.49	4.16

Population characteristics (Census 2011)

	Area 6		Flintshire	Wales	E & W
	Number	%			
Born in Wales	7,017	36.9%	50.0%	72.7%	4.9%
Born outside the UK	1,208	6.3%	4.2%	5.5%	13.4%
Ethnicity - white British	17,804	93.6%	95.9%	93.2%	80.5%
Other white	784	4.1%	2.6%	2.4%	5.5%
Mixed ethnic group	119	0.6%	0.6%	1.0%	2.2%
Other ethnic groups	318	1.7%	1.0%	3.4%	11.8%
Religion - Christian	12,524	65.8%	66.4%	57.6%	59.3%
Other religion	241	1.3%	0.9%	2.7%	8.4%
No religion	4,917	25.8%	25.4%	32.1%	25.1%
(of persons aged 3+)					
Speak Welsh	1,769	9.7%	13.2%	19.0%	-
No skills in Welsh	15,538	84.8%	79.4%	73.3%	-

Flintshire area 6

Health

Health and provision of care (Census 2011)

	Area 6		Flintshire	Wales	E & W
	Number	%			
People with limiting long term illness	3,536	18.6%	19.5%	22.7%	17.9%
People providing unpaid care	2,124	11.2%	11.6%	12.1%	10.3%

Patients with chronic illness, by GP cluster (General Medical Services QOF 2015-16)

	Area 6		Flintshire	Wales
Cluster name	North east Flintshire (best fit)			
Hypertension (high blood pressure)		15.3%	16.0%	15.6%
Asthma		6.7%	7.0%	6.9%
Diabetes		5.3%	5.6%	5.9%
Coronary heart disease		3.7%	3.8%	3.8%
Chronic obstructive pulmonary disease*		2.2%	2.3%	2.2%
Epilepsy		0.6%	0.7%	0.8%
Heart failure		0.9%	1.0%	1.0%
Cancer		2.6%	2.8%	2.6%
Dementia		0.3%	0.5%	0.6%

* lung diseases including chronic bronchitis and emphysema

Based on clusters of GP surgeries as identified by local health boards. The health boards have formally developed arrangements for small groups of GP practices to work collaboratively to develop services in the community, serving populations of between 30 and 50 thousand patients. Clusters are best fit to the sub areas and do not exactly match the same boundaries.

Housing and living arrangements

Households (Census, 2011)

	Area 6		Flintshire	Wales	E & W
	Number	%			
Total households	8,020		63,781	1,302,676	23,366,044
All one person household	2,215	27.6%	27.4%	30.8%	30.2%
- one person; aged 65+	1,020	12.7%	12.9%	13.7%	12.4%
All households with dependent children	2,336	29.1%	29.7%	28.2%	29.1%
- lone parents with dependents	525	6.5%	7.0%	7.5%	7.2%
All households of only pensioners	1,821	22.7%	22.2%	22.9%	20.9%
Population in private households	18,965	99.7%	99.5%	98.3%	98.2%
Average household size	2.36			2.31	2.36

Household facilities

No central heating	132	1.6%	1.6%	2.3%	2.7%
Overcrowded	385	4.8%	3.8%	5.2%	8.5%
Average rooms per household	5.8		5.8	5.7	5.4
No car	1,248	15.6%	17.0%	22.9%	25.6%

Tenure

Owner occupied	5,917	73.8%	73.4%	67.8%	64.3%
Rented from social landlord	1,106	13.8%	15.1%	16.5%	17.6%
Other rented	997	12.4%	11.5%	15.7%	18.0%

Dwellings by council tax band (Neighbourhood Stats, March 2011)

	Area 6		Flintshire	Wales
	Number	%		
Total dwellings	8,113	100%	65,332	1,375,592
Band A	497	6.1%	6.1%	14.9%
Band B	773	9.5%	14.0%	21.3%
Band C	2,287	28.2%	30.1%	21.7%
Band D	1,570	19.4%	18.5%	16.0%
Band E	1,457	18.0%	15.1%	13.1%
Band F	915	11.3%	10.2%	8.0%
Band G	503	6.2%	4.6%	3.7%
Band H	89	1.1%	0.9%	0.9%
Band I	22	0.3%	0.3%	0.4%

Flintshire area 6

House prices (Land Registry, 2015; CACI PayCheck, 2015)

	Area 6	Flintshire	Wales	E & W
Median (All house types)	£ 158,000	£ 150,000	£ 140,000	£ 203,995
Lower quartile (All house types)	£ 120,000	£ 116,500	£ 100,000	£ 135,000
Ratio income:houseprice (median)	5.3	5.5	5.8	7.1
Ratio income:houseprice (lower quartile)	7.4	7.8	7.4	8.7

Community safety

Crime incidences (North Wales Police, 2016)

	Area 6		Flintshire	Wales	E & W
	Number	Rate*			
All crime incidences 2015/16	954	49.06	47.01	61.16	78.63
Violence against the person	229	11.78	12.96	16.84	17.32
Theft & handling	208	10.70	10.19	-	-
Criminal damage & arson	186	9.57	9.56	10.19	9.40

*annual crime rate per 1,000 population

Fire incidences - accidental dwelling fires (North Wales Fire and Rescue Service, three year data 2013-2016)

Incidents	13	three year average
Casualties (injuries & fatalities)	9	three year total

Economy & employment

Industry of employment (Census 2011)

	Area 6		Flintshire	Wales	E & W
	Number	%			
All in employment (aged 16-74)	9,503		74,049	1,363,615	26,526,336
Agriculture, forestry & fishing	77	0.8%	0.9%	1.7%	0.9%
Mining, quarrying, energy, water	177	1.9%	2.0%	1.9%	1.5%
Manufacturing	1,816	19.1%	18.9%	10.5%	8.9%
Construction	656	6.9%	7.7%	8.2%	7.7%
Wholesale & retail	1,603	16.9%	16.3%	15.6%	15.9%
Transport & storage	372	3.9%	4.1%	3.9%	5.0%
Accommodation & food services	486	5.1%	5.2%	6.2%	5.6%
Communication, finance, property	800	8.4%	6.8%	6.6%	9.7%
Professional, scientific, technical	534	5.6%	4.5%	4.3%	6.6%
Administrative & support services	469	4.9%	4.4%	4.0%	4.9%
Public administration & defence	503	5.3%	5.7%	7.9%	6.0%
Education	741	7.8%	8.6%	10.1%	9.9%
Health & social work	912	9.6%	11.1%	14.5%	12.5%
Other	357	3.8%	3.8%	4.5%	5.0%
No qualifications (all aged 16+)	3,325	21.5%	23.5%	25.9%	22.7%
Level 4+ qualification	3,685	23.8%	22.4%	24.5%	27.2%

Social class (Census, 2011)

	Area 6		Flintshire	Wales	E & W
	Number	%			
All aged 16-74	14,074		112,325	2,245,166	41,126,540
Managerial & professional	4,206	29.9%	28.0%	27.4%	31.1%
Skilled	4,439	31.5%	31.6%	29.4%	29.1%
Part / unskilled	4,076	29.0%	30.2%	28.8%	25.2%
Students & other	1,353	9.6%	10.2%	14.5%	14.6%

Unemployment (claimant count) (NOMIS, 2016)

	Area 6		Flintshire	Wales	GB
Dec-15	160	1.3%	1.6%	2.2%	1.7%
Mar-16	165	1.4%	1.7%	2.4%	1.9%
Jun-16	150	1.2%	1.6%	2.2%	1.8%
Sep-16	155	1.3%	1.6%	2.2%	1.8%
Claimants aged 16-24 (Sep-16)*	35	22.6%	26.1%	25.8%	22.5%
Claimants aged 50+ (Sep-16)*	35	22.6%	21.5%	22.1%	23.8%

* Rounded to nearest 5. % is of all claimants.

Well-being of future generations - community assessment

Flintshire area 6

Income & benefits

Household income (CACI PayCheck, 2015)

	Area 6		Flintshire	Wales	GB
	£	%			
Median income	29,900		27,300	24,250	28,700
Lower quartile	16,300		15,000	13,600	15,450
Households below 60% GB median (= £17,173)		27.0%	30.1%	34.5%	28.8%

Benefits (NOMIS, 2016)

	Area 6		Flintshire	Wales	GB
	Number	%			
February 2015					
All working age client group*	1,290	10.9%	12.3%	16.3%	12.5%
Job seekers*	130	1.1%	1.7%	2.5%	2.0%
ESA/incapacity benefits*	635	5.4%	6.0%	8.6%	6.3%
Lone parent*	125	1.1%	1.1%	1.3%	1.1%
Other income related*	30	0.3%	0.3%	0.3%	0.3%
All key out of work benefits*	920	7.8%	9.1%	12.8%	9.7%
Carers*	185	1.6%	1.7%	2.0%	1.5%
Disabled*	155	1.3%	1.3%	1.3%	1.1%
Bereaved*	30	0.3%	0.2%	0.2%	0.2%
Pension credit**	635	15.5%	17.6%	20.3%	18.6%
February 2016					
All working age client group*	1,200	10.2%	11.2%	15.2%	11.8%
Job seekers*	85	0.7%	1.0%	1.9%	1.5%
Incapacity benefits*	655	5.6%	5.9%	8.4%	6.2%
Lone parent*	110	0.9%	1.0%	1.2%	1.1%
Other income related*	15	0.1%	0.2%	0.3%	0.2%
All key out of work benefits*	865	7.3%	8.1%	11.8%	9.0%
Carers*	200	1.7%	1.8%	2.1%	1.6%
Disabled*	115	1.0%	1.0%	1.1%	1.0%
Bereaved*	20	0.2%	0.2%	0.2%	0.2%
Pension credit**	580	14.2%	16.0%	18.7%	17.1%

* % is of all work age ** % is of all receiving state pension

Poverty and deprivation

Children in families receiving tax credits (HMRC, 2016)

	Area 6		Flintshire	Wales	GB
Children in in-work families	1,360	35.7%	38.0%	40.0%	38.8%
Children in out-of-work families	645	16.9%	17.7%	22.1%	19.8%
Total	2,005	52.6%	55.7%	62.1%	58.6%

As % all children. In work is working 16 hrs a week or more

Welsh index of multiple deprivation (Welsh Government, 2014)

	Area 6		Flintshire	
Total LSOAs in area	11		92	
No. LSOAs in most deprived:	10%	25%	10%	25%
In each deprivation domain				
Overall Index	0	2	2	16
Income	0	1	4	13
Employment	0	1	2	9
Health	0	2	2	10
Education	0	4	4	18
Access to services	0	2	3	20
Community safety	2	2	8	20
Physical environment	8	9	32	48
Housing	1	4	6	26

Deprivation data shows how many lower super output areas (LSOAs) in the area are in the 10% and 25% most deprived LSOAs in Wales.

Flintshire community area 7

Encompasses the town of Saltney and surrounding communities of Broughton & Bretton, Higher Kinnerton and Hope. It contains the following lower super output areas (LSOAs) and wards (electoral divisions).

Area 7			
LSOA		Ward (electoral district)	
W01000255	Broughton North East	W05000184	Broughton North East
W01000256	Broughton South 1	W05000185	Broughton South
W01000257	Broughton South 2	W05000191	Caergwrle
W01000269	Caergwrle	W05000210	Higher Kinnerton
W01000303	Higher Kinnerton	W05000214	Hope
W01000307	Hope 1	W05000228	Saltney Mold Junction
W01000308	Hope 2	W05000229	Saltney Stonebridge
W01000329	Saltney Mold Junction		
W01000330	Saltney Stonebridge 1		
W01000331	Saltney Stonebridge 2		

Bordering England the area is home to Airbus UK and a successful retail park, cinema and restaurant complex.

Flintshire area 7

Key points

Population characteristics - age structure similar to GB average. Population total increased well above Flintshire average in past 10 years. Ethnicity & religion significantly less diverse than England & Wales averages. Welsh speakers well below to Welsh average.

Health - limiting long term illness below Wales & Flintshire average. Lower levels of chronic illness than Wales average.

Housing and living arrangements - lower proportion of person households than national average. Overcrowding and lack of central heating levels below national average, as is proportion of households with no car - all measures similar to Flintshire average. High level of owner occupation compared to national averages. House prices above wales and Flintshire average. Affordability (income to houseprice ratio) particularly poor at lower quartile level.

Community safety - crime rates low compared to national level and Flintshire average.

Economy - employment in professional/technical/scientific, health & social work, public administration and education industries is relatively low. Comparatively high employment in manufacturing and wholesale & retail. Employment in communications/finance/property work high compared to Wales and Flintshire averages. Qualification levels low compared to national figures. Unemployed claimant rate lower than GB and Wales levels.

Income and benefits - income levels around England & Wales average, significantly above Wales level. Low proportion of people claiming out of work benefits.

Poverty and deprivation - the proportion of children in families claiming Working Tax Credits is below national averages. Higher than average levels of deprivation in the physical environment domain of the Welsh Index of Multiple Deprivation.

These statistics may be used under the terms of the Open Government Licence.

Produced by the Corporate Research and Information Unit, Conwy County Borough Council

Population characteristics

Population, age and gender 2014 (ONS MYE)

	Area 7		Flintshire	Wales	GB
	Number	%	%	%	%
Mid-year population 2004	16,400	Change	Change	Change	Change
Mid-year population 2014	17,200	5.0%	2.8%	4.9%	7.8%
Males	8,500	49.5%	49.3%	49.2%	49.2%
Females	8,700	50.5%	50.7%	50.8%	50.8%
Aged 0-15	3,250	18.9%	18.5%	18.0%	18.8%
Aged 16-29	3,050	17.6%	16.4%	18.2%	18.3%
Aged 30-44	3,300	19.1%	18.1%	18.0%	19.7%
Aged 45-64	4,550	26.5%	27.3%	26.3%	25.5%
Aged 65+	3,100	17.9%	19.7%	19.5%	17.7%
Population density 2014 (persons/ha)		4.44	3.51	1.49	4.16

Population characteristics (Census 2011)

	Area 7		Flintshire	Wales	E & W
	Number	%			
Born in Wales	5,447	32.0%	50.0%	72.7%	4.9%
Born outside the UK	722	4.2%	4.2%	5.5%	13.4%
Ethnicity - white British	16,301	95.7%	95.9%	93.2%	80.5%
Other white	391	2.3%	2.6%	2.4%	5.5%
Mixed ethnic group	131	0.8%	0.6%	1.0%	2.2%
Other ethnic groups	204	1.2%	1.0%	3.4%	11.8%
Religion - Christian	11,136	65.4%	66.4%	57.6%	59.3%
Other religion	233	1.4%	0.9%	2.7%	8.4%
No religion	4,455	26.2%	25.4%	32.1%	25.1%
(of persons aged 3+)					
Speak Welsh	1,565	9.5%	13.2%	19.0%	-
No skills in Welsh	14,013	85.4%	79.4%	73.3%	-

Flintshire area 7

Health

Health and provision of care (Census 2011)

	Area 7		Flintshire	Wales	E & W
	Number	%			
People with limiting long term illness	3,018	17.7%	19.5%	22.7%	17.9%
People providing unpaid care	1,905	11.2%	11.6%	12.1%	10.3%

Patients with chronic illness, by GP cluster (General Medical Services QOF 2015-16)

	Area 7		Flintshire	Wales
Cluster name	North east Flintshire (best fit)			
Hypertension (high blood pressure)		15.3%	16.0%	15.6%
Asthma		6.7%	7.0%	6.9%
Diabetes		5.3%	5.6%	5.9%
Coronary heart disease		3.7%	3.8%	3.8%
Chronic obstructive pulmonary disease*		2.2%	2.3%	2.2%
Epilepsy		0.6%	0.7%	0.8%
Heart failure		0.9%	1.0%	1.0%
Cancer		2.6%	2.8%	2.6%
Dementia		0.3%	0.5%	0.6%

* lung diseases including chronic bronchitis and emphysema

Based on clusters of GP surgeries as identified by local health boards. The health boards have formally developed arrangements for small groups of GP practices to work collaboratively to develop services in the community, serving populations of between 30 and 50 thousand patients. Clusters are best fit to the sub areas and do not exactly match the same boundaries.

Housing and living arrangements

Households (Census, 2011)

	Area 7		Flintshire	Wales	E & W
	Number	%			
Total households	7,097		63,781	1,302,676	23,366,044
All one person household	1,871	26.4%	27.4%	30.8%	30.2%
- one person; aged 65+	886	12.5%	12.9%	13.7%	12.4%
All households with dependent children	2,185	30.8%	29.7%	28.2%	29.1%
- lone parents with dependents	550	7.7%	7.0%	7.5%	7.2%
All households of only pensioners	1,450	20.4%	22.2%	22.9%	20.9%
Population in private households	16,930	99.4%	99.5%	98.3%	98.2%
Average household size	2.39			2.31	2.36

Household facilities

No central heating	105	1.5%	1.6%	2.3%	2.7%
Overcrowded	264	3.7%	3.8%	5.2%	8.5%
Average rooms per household	5.8		5.8	5.7	5.4
No car	1,195	16.8%	17.0%	22.9%	25.6%

Tenure

Owner occupied	5,154	72.6%	73.4%	67.8%	64.3%
Rented from social landlord	1,074	15.1%	15.1%	16.5%	17.6%
Other rented	869	12.2%	11.5%	15.7%	18.0%

Dwellings by council tax band (Neighbourhood Stats, March 2011)

	Area 7		Flintshire	Wales
	Number	%		
Total dwellings	7,126	100%	65,332	1,375,592
Band A	174	2.4%	6.1%	14.9%
Band B	305	4.3%	14.0%	21.3%
Band C	2,716	38.1%	30.1%	21.7%
Band D	1,891	26.5%	18.5%	16.0%
Band E	1,003	14.1%	15.1%	13.1%
Band F	672	9.4%	10.2%	8.0%
Band G	273	3.8%	4.6%	3.7%
Band H	73	1.0%	0.9%	0.9%
Band I	19	0.3%	0.3%	0.4%

Flintshire area 7

House prices (Land Registry, 2015; CACI PayCheck, 2015)

	Area 7	Flintshire	Wales	E & W
Median (All house types)	£ 160,000	£ 150,000	£ 140,000	£ 203,995
Lower quartile (All house types)	£ 129,995	£ 116,500	£ 100,000	£ 135,000
Ratio income:houseprice (median)	5.6	5.5	5.8	7.1
Ratio income:houseprice (lower quartile)	8.3	7.8	7.4	8.7

Community safety

Crime incidences (North Wales Police, 2016)

	Area 7		Flintshire	Wales	E & W
	Number	Rate*			
All crime incidences 2015/16	641	37.25	47.01	61.16	78.63
Violence against the person	164	9.53	12.96	16.84	17.32
Theft & handling	165	9.59	10.19	-	-
Criminal damage & arson	126	7.32	9.56	10.19	9.40

*annual crime rate per 1,000 population

Fire incidences - accidental dwelling fires (North Wales Fire and Rescue Service, three year data 2013-2016)

Incidents	6	three year average
Casualties (injuries & fatalities)	-	three year total

Economy & employment

Industry of employment (Census 2011)

	Area 7		Flintshire	Wales	E & W
	Number	%			
All in employment (aged 16-74)	8,706		74,049	1,363,615	26,526,336
Agriculture, forestry & fishing	68	0.8%	0.9%	1.7%	0.9%
Mining, quarrying, energy, water	148	1.7%	2.0%	1.9%	1.5%
Manufacturing	1,487	17.1%	18.9%	10.5%	8.9%
Construction	607	7.0%	7.7%	8.2%	7.7%
Wholesale & retail	1,557	17.9%	16.3%	15.6%	15.9%
Transport & storage	360	4.1%	4.1%	3.9%	5.0%
Accommodation & food services	466	5.4%	5.2%	6.2%	5.6%
Communication, finance, property	825	9.5%	6.8%	6.6%	9.7%
Professional, scientific, technical	420	4.8%	4.5%	4.3%	6.6%
Administrative & support services	368	4.2%	4.4%	4.0%	4.9%
Public administration & defence	442	5.1%	5.7%	7.9%	6.0%
Education	726	8.3%	8.6%	10.1%	9.9%
Health & social work	932	10.7%	11.1%	14.5%	12.5%
Other	300	3.4%	3.8%	4.5%	5.0%
No qualifications (all aged 16+)	3,005	21.8%	23.5%	25.9%	22.7%
Level 4+ qualification	3,153	22.9%	22.4%	24.5%	27.2%

Social class (Census, 2011)

	Area 7		Flintshire	Wales	E & W
	Number	%			
All aged 16-74	12,540		112,325	2,245,166	41,126,540
Managerial & professional	3,669	29.3%	28.0%	27.4%	31.1%
Skilled	4,193	33.4%	31.6%	29.4%	29.1%
Part / unskilled	3,490	27.8%	30.2%	28.8%	25.2%
Students & other	1,188	9.5%	10.2%	14.5%	14.6%

Unemployment (claimant count) (NOMIS, 2016)

	Area 7		Flintshire	Wales	GB
Dec-15	120	1.1%	1.6%	2.2%	1.7%
Mar-16	125	1.1%	1.7%	2.4%	1.9%
Jun-16	130	1.2%	1.6%	2.2%	1.8%
Sep-16	130	1.2%	1.6%	2.2%	1.8%
Claimants aged 16-24 (Sep-16)*	35	26.9%	26.1%	25.8%	22.5%
Claimants aged 50+ (Sep-16)*	30	23.1%	21.5%	22.1%	23.8%

* Rounded to nearest 5. % is of all claimants.

Well-being of future generations - community assessment

Flintshire area 7

Income & benefits

Household income (CACI PayCheck, 2015)

	Area 7		Flintshire	Wales	GB
	£	%			
Median income	28,450		27,300	24,250	28,700
Lower quartile	15,700		15,000	13,600	15,450
Households below 60% GB median (= £17,173)		28.4%	30.1%	34.5%	28.8%

Benefits (NOMIS, 2016)

	Area 7		Flintshire	Wales	GB
	Number	%			
February 2015					
All working age client group*	1,110	10.6%	12.3%	16.3%	12.5%
Job seekers*	150	1.4%	1.7%	2.5%	2.0%
ESA/incapacity benefits*	535	5.1%	6.0%	8.6%	6.3%
Lone parent*	105	1.0%	1.1%	1.3%	1.1%
Other income related*	20	0.2%	0.3%	0.3%	0.3%
All key out of work benefits*	810	7.8%	9.1%	12.8%	9.7%
Carers*	140	1.3%	1.7%	2.0%	1.5%
Disabled*	150	1.4%	1.3%	1.3%	1.1%
Bereaved*	10	0.1%	0.2%	0.2%	0.2%
Pension credit**	550	16.9%	17.6%	20.3%	18.6%
February 2016					
All working age client group*	990	9.5%	11.2%	15.2%	11.8%
Job seekers*	70	0.7%	1.0%	1.9%	1.5%
Incapacity benefits*	515	4.9%	5.9%	8.4%	6.2%
Lone parent*	80	0.8%	1.0%	1.2%	1.1%
Other income related*	15	0.1%	0.2%	0.3%	0.2%
All key out of work benefits*	680	6.5%	8.1%	11.8%	9.0%
Carers*	180	1.7%	1.8%	2.1%	1.6%
Disabled*	110	1.1%	1.0%	1.1%	1.0%
Bereaved*	20	0.2%	0.2%	0.2%	0.2%
Pension credit**	525	16.0%	16.0%	18.7%	17.1%

* % is of all work age ** % is of all receiving state pension

Poverty and deprivation

Children in families receiving tax credits (HMRC, 2016)

	Area 7		Flintshire	Wales	GB
Children in in-work families	1,330	37.4%	38.0%	40.0%	38.8%
Children in out-of-work families	545	15.3%	17.7%	22.1%	19.8%
Total	1,875	52.7%	55.7%	62.1%	58.6%

As % all children. In work is working 16 hrs a week or more

Welsh index of multiple deprivation (Welsh Government, 2014)

	Area 7		Flintshire	
Total LSOAs in area	10		92	
No. LSOAs in most deprived:	10%	25%	10%	25%
In each deprivation domain				
Overall Index	0	0	2	16
Income	0	0	4	13
Employment	0	0	2	9
Health	0	0	2	10
Education	0	2	4	18
Access to services	0	0	3	20
Community safety	0	1	8	20
Physical environment	3	4	32	48
Housing	1	3	6	26

Deprivation data shows how many lower super output areas (LSOAs) in the area are in the 10% and 25% most deprived LSOAs in Wales.

