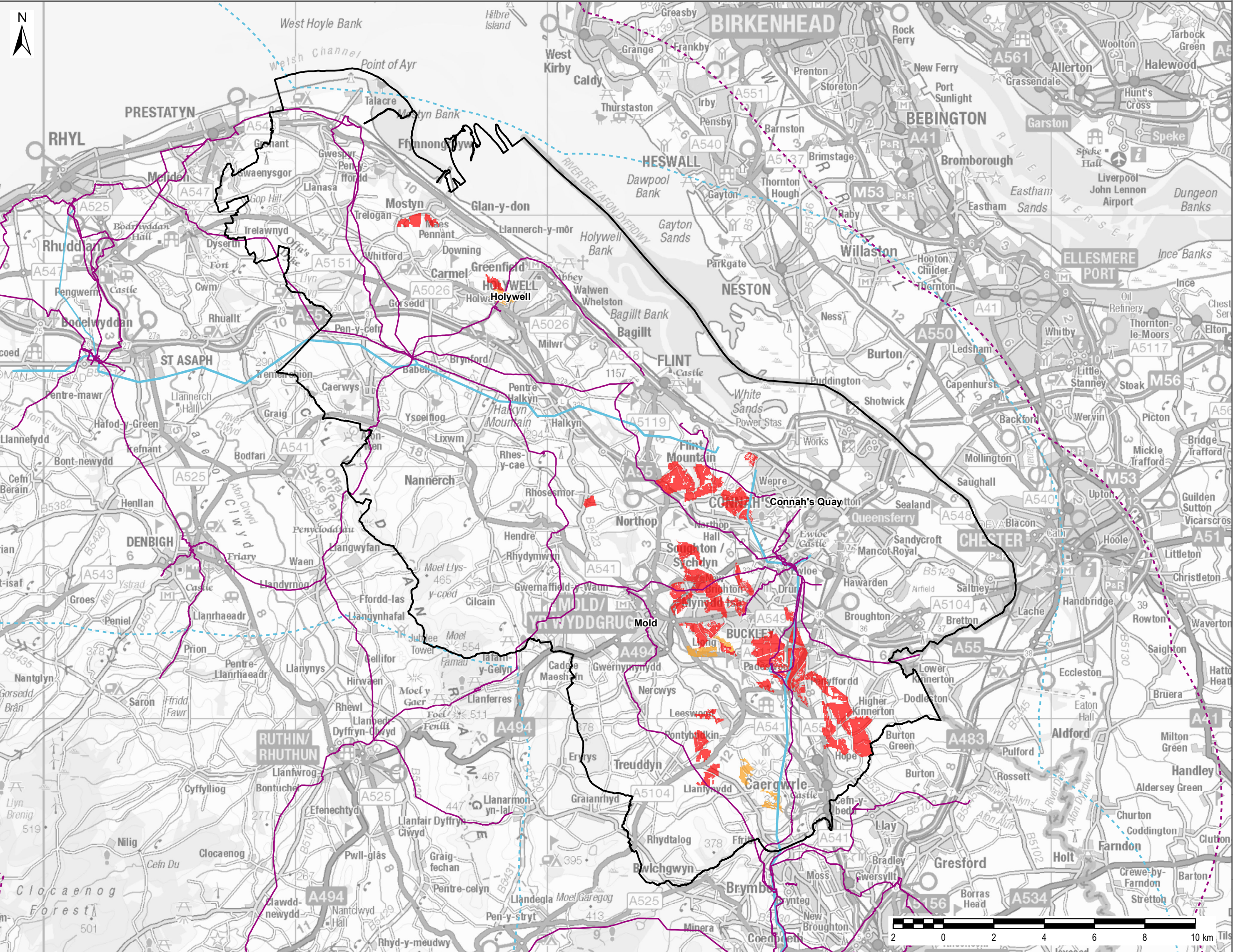


This drawing has been prepared for the use of AECOM's client. It may not be used, modified, reproduced or relied upon by third parties, except as agreed by AECOM or as required by law. AECOM accepts no responsibility, and denies any liability whatsoever, to any party that uses or relies on this drawing without AECOM's express written consent. Do not scale this document. All measurements must be obtained from the stated dimensions.



**LEGEND**

- Flintshire County Council Boundary
- Grid Infrastructure 33kV
- Grid Infrastructure 132kV
- Grid Infrastructure 33kV 10km Buffer
- Grid Infrastructure 132kV 10km Buffer
- Potential Solar PV Resource - All Orientations
- Potential Solar PV Resource - SE to SW Orientations

Copyright:  
 Contains Natural Resources Wales information © Natural Resources Wales and Database Right. All rights Reserved. Contains Ordnance Survey Data. Ordnance Survey Licence number 100019741. Crown Copyright and Database Right.

S6  
 Solar PV Resource  
 Available within  
 Grid Connection

21/08/19

