

# Council Tax Payments

## Paying Council Tax over 12 months

To make payments more manageable did you know that you can spread monthly payments over 12 months from April - March?



## Flexible ways to pay

Did you know that if you switch to payment by Direct Debit you can choose from a variety of payment dates.

We offer monthly Direct Debits on 1st, 8th, 18th or 25th of the month.

We also offer a weekly option and from 1st April 2021 you can now choose to pay 4 weekly



If you don't pay by Direct Debit payments are due on 1st of each month  
Change the way you pay with one easy phone call to

**01352 704848**

[www.flintshire.gov.uk/counciltax](http://www.flintshire.gov.uk/counciltax)



**Payment**

# Taliadau Treth y Cyngor

## Talu Treth y Cyngor dros 12 mis

I wneud eich taliadau yn haws eu rheoli, oeddech chi'n gwybod y gallwch wasgaru eich taliadau misol dros 12 mis o Ebrill i Mawrth?



## Dulliau hyblyg o dalu

Oeddech chi'n gwybod pe baech yn talu gyda Debyd Uniongyrchol y gallwch ddewis o amrywiaeth o ddyddiadau talu?

Rydym yn cynnig cymryd taliadau Debyd Uniongyrchol ar y 1af, 8fed, 18fed neu 25ain o'r mis. Rydym hefyd yn cynnig dewis wythnosol ac o 1 Ebrill 2021, gallwch nawr ddewis talu bob 4 wythnos.

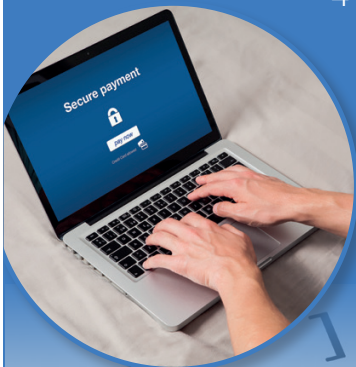


Os nad ydych yn talu gyda Debyd Uniongyrchol, byddwn yn disgwyl eich taliad ar y 1af o bob mis.

Newidiwch y ffordd rydych yn talu trwy wneud un galwad ffôn hawdd i

**01352 704848**

[www.siryfflint.gov.uk/trethcyngor](http://www.siryfflint.gov.uk/trethcyngor)



**Taliad**