



Formal Consultation Document

**Proposal to close Ysgol Gymraeg Mornant,
Picton (Welsh Medium, Community School) as of
31st of August 2016 with pupils transferring to
other Welsh medium schools in the local area
subject to parental preference**

November 2015

Table of Contents

- 1. Introduction**
- 2. Development of School Organisation Proposal**
- 3. Background to the Proposal**
- 4. The Proposal**
- 5. Benefits, disadvantages and risks of the proposal**
- 6. What will be the impact of the proposal on the Quality and Standards in Education?**
- 7. Evaluation of the impact of the proposal on Quality and Standard in education**
- 8. Alternative provision**
- 9. Adequacy of School Accommodation and Impact of the Proposal on the Quality of Accommodation**
- 10. What will be the impact of the proposal on financing of Schools?**
- 11. What will be the impact of the proposal on the land and buildings of the School?**
- 12. What issues have been considered in developing the proposal?**
- 13. Welsh Language, Community and Equality Impacts**
- 14. Impact of the Proposal on Teachers, Support Staff and Governing Body**
- 15. Impact of the Proposal on Pupils**
- 16. Additional Learning Needs (ALN) and Groups of Vulnerable Learners**
- 17. Transport Arrangements**
- 18. Admission Arrangements**
- 19. Impact of the Proposal on Secondary Provision**
- 20. How will the consultation take place?**

1.0 Introduction

- 1.1 Flintshire County Council wishes to seek the views of interested parties regarding the proposal to close Ysgol Gymraeg Mornant, Picton from 31st of August 2016 with existing pupils transferring to other Welsh medium schools in the local area, subject to parental preference.
- 1.2 This consultation document sets out information which consultees should consider to participate fully in the consultation process. The process follows regulatory guidance as set out in the Welsh Government's School Organisation Code 2013.
- 1.3 The formal consultation period commences on Wednesday 11th November 2015 and ends on Wednesday 23rd December 2015.

2. Development of School Organisation Proposals

- 2.1 Development of school organisation proposals should have regard to overarching national policies and principles, including:
 - United Nations Convention on the Rights of the Child;
 - A Living Language : A Language for Living - Welsh Language Strategy 2012 - 2017;
 - Welsh Medium Education Strategy (WESP);
 - One Wales: One Planet, a new sustainable development scheme for Wales May 2009 or any successor strategy;
 - Child Poverty Strategy for Wales (issued February 2011 information document number 95/2011), or any successor strategy;
 - Faith in Education.
- 2.2 Additionally, the development of school organisation proposals should have regard to local plans, including;
 - Local plans for economic or housing development;
 - Welsh in education strategic plans;
 - Children and Young People's Partnership plans;
 - School Modernisation Strategy.
- 2.3 Regard should also be given to Welsh Government guidance on matters to relating to school organisation, such as:
 - Learner Travel (Wales) Measure (2008);
 - Measuring capacity of schools in Wales (October 2011).
- 2.4 Factors that should be taken into account by relevant bodies when preparing, publishing, approving or determining school organisation proposals are as follows:

- Quality and standards in education - outcomes, provision and leadership and management;
- Need for places and the impact on accessibility of schools; and
- Resourcing of education and other financial implications.

2.5 Other factors are also taken into account, such as the impact of the proposal on children from economically deprived backgrounds, and any equality issues (including those identified through equality impact assessments).

3. Background to the Proposal

3.1 Our aim is that children and young people in Flintshire will develop essential life skills, a strong desire for lifelong learning and be very well prepared for the world of work. All children and young people will be supported to progress through the different stages of their education. Every child and young person will be entitled to a learning programme that will be personalised to make the most of his or her abilities. Children and young people will learn in an exciting and innovative range of styles and settings. These will include vocational, enterprising, voluntary, spiritual, cultural and sporting learning experiences. School organisation objectives will provide opportunities for Welsh and English medium provision, and also faith provision.

Flintshire County Council is committed to continuing to raise standards, with key tasks include securing:

- high expectations and a clear focus on improving teaching, learning and attainment in all school communities;
- all resources available to schools focusing on improving outcomes for children and young people in a context of annual budget pressures;
- a consistent approach to the collection, analysis and use of assessment information, including tracking systems, to target support and interventions;
- continued commitment to the development of school teaching and support staff; and
- Supporting, expanding and promoting Welsh-medium education within the whole community, increasing the number and percentage of pupils receiving Welsh-medium education in compliance with the Welsh Government's Welsh-Medium Education Strategy of developing learners who are fully bilingual (i.e. fluent in both English and Welsh) and where there is demand.

3.2 Flintshire County Council's Cabinet approved the revised School Modernisation Strategy in January 2015, which was updated from the Council's previous strategy adopted by Cabinet in 2010. This document is available at:

www.flintshire.gov.uk/schoolmodernisation.

- 3.3 The School Modernisation Programme is required because we need to:
- Ensure education provision is both high quality and sustainable;
 - Improve the quality of school buildings and facilities;
 - Provide the right number of school places, of the right type, in the right locations;
 - Address unsustainable school buildings and supporting infrastructure;
 - Recognise that doing nothing means higher pupil teacher ratios as funding reduces; and
 - Ensure that we maximise external funding through the Welsh Government's 21st Century Schools Programme.
- 3.4 The key 'drivers' or criteria for modernisation which underpin the above are:
- Educational improvement
 - Resilient school leadership
 - Suitable buildings
 - Unfilled places
 - Diminishing resources
- 3.5 The primary school portfolio has 1967 (or 17.15%) unfilled places (based on January 2015 PLASC¹, whilst the national target set by Welsh Government is to reduce this level to under 10%.
- 3.6 The Council recognises there is a need to ensure that all schools and school sites are able to provide children with the widest possible opportunities. As a result the Council must consider the educational challenges faced by small schools, as referenced in the Estyn 2003 report 'Small Primary Schools in Wales', which include:
- Teaching mixed age classes containing more than 2 or 3 age groups;
 - The restricted size of peer groups;
 - Limited opportunities for social interaction;
 - Difficulties with recruitment and retention of staff;
 - Excessive burdens on staff;
 - Increased expertise required to support pupils with additional learning needs.
- 3.7 The objectives of the schools modernisation strategy and the review of schools contained within the council's implementation plan are to address these challenges and ensure that the current standards and attainment within the primary sector are maintained for the future.

¹ PLASC – Pupil Level Annual School Census

- 3.8 Future primary school provision will endeavour to follow one of the Council's recommended models described below. The models are:
- a) 1 form entry or more – primary school providing a minimum of 210 full-time places or more (approximately 30 pupils per year group) and with no more than 25% unfilled places. Other models of at least one form of entry, for example, 1.5, 2, 2.5 or 3 forms of entry are also efficient and effective.
 - b) Schools with less than 1 form of entry, but with more than 0.5 forms of entry providing at least 105 full-time places (approximately 15 pupils per year group) where needed, may be considered for the formation of a federated school or an area school. Area schools would be formed in accordance with the Council's preferred operating model at (a) above.
- 3.9 Where the school is unable to sustain sufficient pupil numbers or an area review determines that a school is to be closed, statutory proposals need to be published in order to close any primary school, including those within a federation.
- 3.10 The Council is bringing forward these proposals as it is of the view that the changes proposed would be of long term benefit to all pupils within Flintshire.

4. The Proposal

- 4.1 The proposal is to close Ysgol Gymraeg Mornant, Picton Road, Penyffordd, Near Holywell, Flintshire, CH8 9JQ (Welsh Medium, community school) as of 31st August 2016 with the pupils transferring to the local network of schools based on parental preference.
- 4.2 The proposal is put forward on the basis that the school meets the following triggers as notes in the Council's School Modernisation Strategy:-
- Unfilled places across the primary school portfolio – Ysgol Gymraeg Mornant, Picton, as at January 2015 (PLASC) had 48 full time pupils with unfilled places at 57.76%. As at September 2015 the school is 44 full time pupils, with unfilled places at 60.36% (based on the current school capacity assessment of 111 full time pupils);
 - Diminishing resource criteria (i.e. small numbers within the community raise concern regarding sustainability within the school's portfolio);
 - Small School – The school population of Ysgol Gymraeg Mornant, Picton is lower than national designation of a small school, additionally school numbers do not meet the minimum requirements of primary school models as noted in the Council's School Modernisation Strategy.
 - Ysgol Gymraeg Mornant, Picton is currently (July 2015) in Welsh Government categorisation 4 (out of 1-4) with 4 being the lowest for standards. Welsh Government review their categorisation annually, at the time of writing this

document, the categorisation of Ysgol Gymraeg Mornant, Picton had not been reviewed by Welsh Government.

- 4.3 This leads to higher costs per pupil; unnecessary building, leadership and administration costs. The proposal will enable the Council to focus spending on the classroom in a time of annual diminishing budgets for schools for the foreseeable future.
- 4.4 Within the nearby area there are currently 2 Welsh medium community primary schools which have been identified as alternative schools should Ysgol Gymraeg Mornant, Picton close. The schools are listed below (together with their national school categorisation for standards):
- Ysgol Gwenffrwd, Holywell (Category 3)
 - Ysgol Y Llys, Prestatyn, Denbighshire (Category 3)

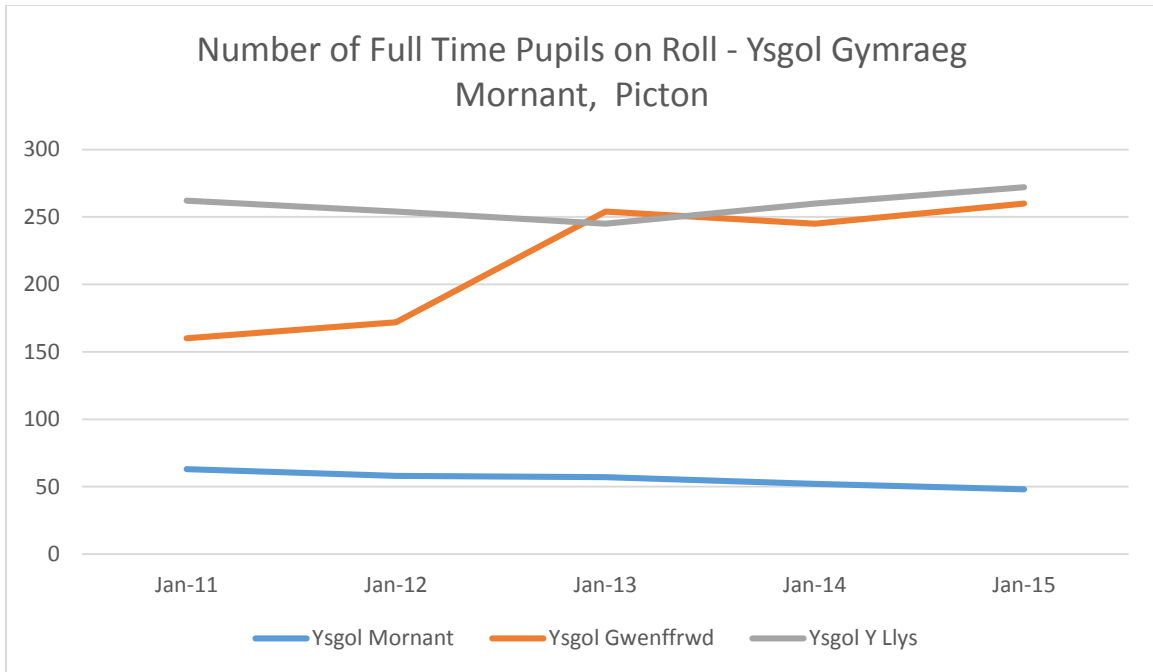
The National School Categorisation System has now been introduced in Wales. The National School Categorisation System provides a clear and simple way of understanding how well a school is performing for all its pupils, how effectively it is led and managed, the quality of teaching and learning and the level of support and challenge it needs to do even better. Schools will be in one of four standards groups (1 to 4), with schools in standards group 1 demonstrating very good overall performance and those in standards group 4 demonstrating the greatest need for improved performance.

- 4.5 Pupil numbers in the two alternative Welsh medium schools identified in this document have seen an increase in pupil numbers since 2011.

Numbers of **full time pupils** on Roll (*Source: January Annual PLASC Data*) Jan 2011-2015 – Compared to Nearby Schools

School Name	Jan 11	Jan 12	Jan 13	Jan 14	Jan 15
Ysgol Gymraeg Mornant, Picton (WM)	63	58	57	52	48
Ysgol Gwenffrwd, Holywell (WM)	160	172	180	195	202
Ysgol Y Llys, Prestatyn (WM)	262	254	245	260	272
Totals	485	484	482	507	522
Capacity (Full Time)	787	787	787	787	787
Unfilled Numbers	302	303	305	280	265
Unfilled %	38.37%	38.5%	38.75%	35.57%	33.67%

(WM – Welsh Medium)

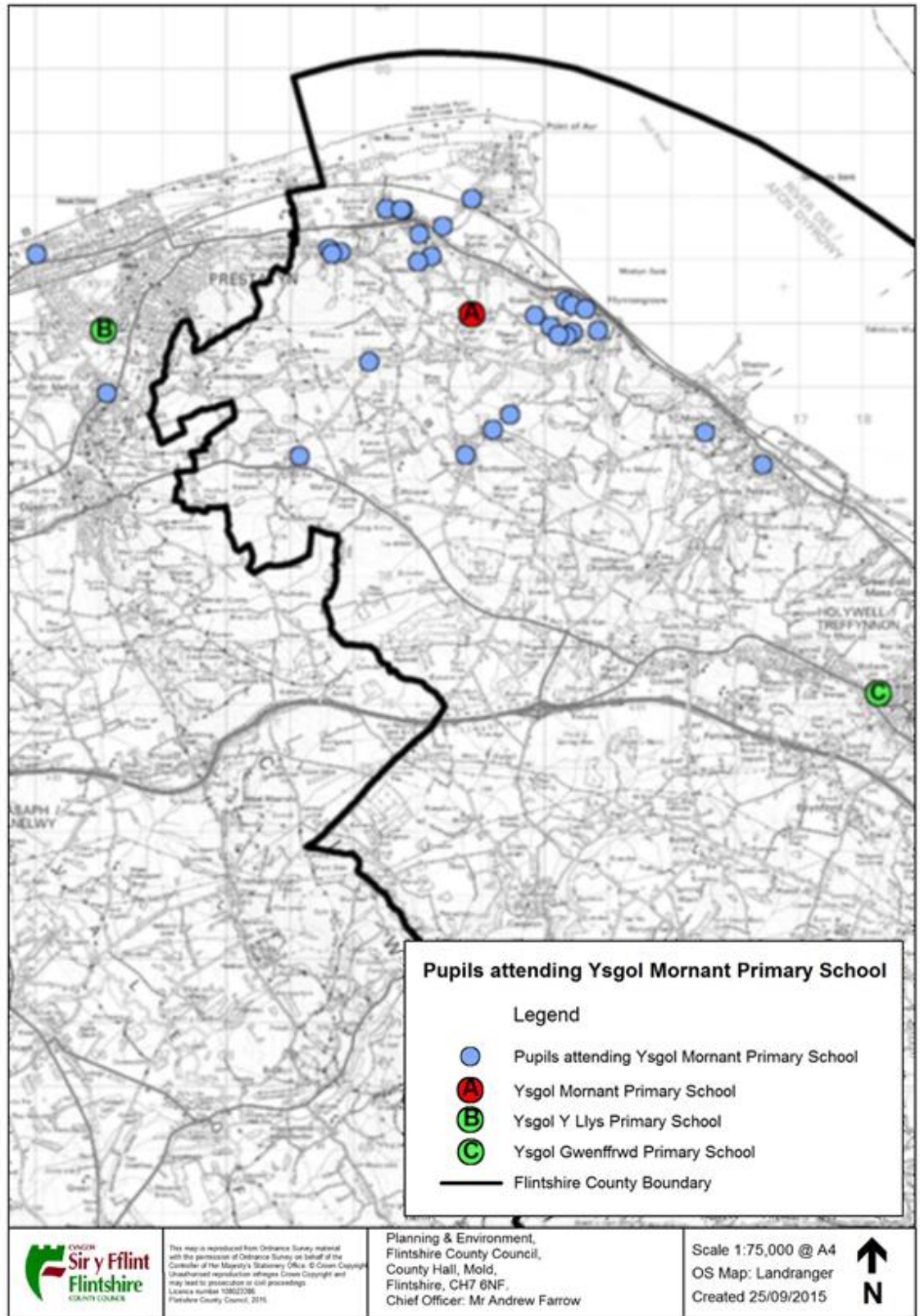


Flintshire County Council has a statutory responsibility to ensure there is a sufficient number of school places, of the right type, in the right locations. The local demand for Welsh medium education in the Gwespyr-Picton area is insufficient to support a suitably sized primary school, the school has fallen to 44 full time pupils as at September 2015.

The Council acknowledges that statutory consultation around school organisation change can cause a level of uncertainty within the local school community, which can be a contributory factor in a fall in pupil numbers.

Pupils in the Gwespyr-Picton area are predominately selecting to attend their nearest available school Ysgol Gymraeg Mornant, Picton. However, there is a small number of pupils who reside in the Gwespyr-Picton area whom are selecting other Welsh medium schools. There are insufficient pupil numbers and demand in the area to ensure that Ysgol Gymraeg Mornant, Picton is sustainable as austerity hits further. .

The map on the next page displays the current (September 2015) home location for Ysgol Gymraeg Mornant, Picton pupils.



4.6 Percentage of pupils attending Ysgol Gymraeg Mornant, Picton (Source: snapshot of pupils from the ONE system, September 2015)

School	% of pupils whose nearest Welsh Medium School is Ysgol Gymraeg Mornant, Picton	% of pupils where Ysgol Gymraeg is not their nearest Welsh medium school
Ysgol Gymraeg Mornant, Picton	90.9%	9.1%

4.7 The table below provides the current full time number on roll (January census 2015), current capacities of schools, admission number and unfilled places likely to be affected by the proposal.

Name of School	Total (FT) Pupils Jan 2015	Current Capacity (FT)	Admission Number	Unfilled Places	% of Unfilled Places
Ysgol Gymraeg Mornant, Picton	48	111	15	63	56.76%
Ysgol Gwenffrwd, Holywell	202	256	36	54	21.09%
Ysgol Y Llys, Prestatyn	272	420	60	148	35.23%
TOTAL	522	787		265	

The current School capacity is officially 111. However this current capacity assessment includes a mobile classroom, which has since been removed. A reassessment of the capacity would reduce the schools full time capacity to 81 full time places which would reduce the unfilled places from 56.76% to 40.74% based on January 2015 pupil numbers or 45.67% unfilled places based on September 2015 pupil numbers.

However, a reduction in the capacity would require the Council to formalise via a publication of notice (Statutory proposal) based on the Measuring the Capacity of schools in Wales guidance.

If the capacity of the school was reduced, the school would still trigger a review under the unfilled places criteria. Additionally as the school is already in the formal process of consultation on statutory school closure as per the School

Organisation Code which takes precedence. Should the school remain open the Council will formally review the capacity assessment through a separate process.

Name of School	Total (FT) Pupils Jan 2015	Capacity (FT)	Admission Number	Unfilled Places	% of Unfilled Places
Ysgol Gymraeg Mornant, Picton (without mobile classroom)	48	81	11	33	40.74%
Ysgol Gwenffrwd, Holywell	202	256	36	54	21.09%
Ysgol Y Llys, Prestatyn	272	420	60	148	35.23%
TOTAL	522	757		235	

As the change in capacity has not been formally amended, the capacity of Ysgol Gymraeg Mornant, Picton of 111 (full time pupils) is referenced throughout this document.

- 4.8 Pupil projections for all primary schools are undertaken following the return of the official school return (i.e. January school census). Pupil projections have been developed and aligned with other Local Authorities across the North Wales region.

Pupil Projections for identified Welsh Medium schools based on PLASC Census Data January 2015 (full time pupil numbers on roll)

Schools	Sept 2015	Sept 2016	Sept 2017	Sept 2018	Sept 2019	+/-
Ysgol Gymraeg Mornant, Picton (WM)	46	42	35	35	33	-13
Ysgol Gwenffrwd, Holywell (WM)	209	216	214	223	227	+18
Ysgol Y Llys, Prestatyn (WM)	309	327	346	364	380	+71
Totals	564	585	595	622	640	
Capacity (Full Time)	787	787	787	787	787	
Unfilled Numbers	223	202	192	165	147	
Unfilled %	28.33%	25.66%	24.39%	20.96%	18.67%	

(Source: May 2015 using Jan 15 PLASC and Denbighshire County Council projections)

- 4.9 The actual number of full time (FT) pupils on roll as at September 2015 for Ysgol Gymraeg Mornant, Picton is 44 (Source: The ONE System). This information

has been verified with Ysgol Gymraeg Mornant, Picton and Flintshire's School Management Information Team.

Based on the September pupil figures a reassessment of the pupil projections at the school is as follows.

Schools	Actual Sept 2015	Sept 2016	Sept 2017	Sept 2018	Sept 2019	Sept 2020
Ysgol Gymraeg Mornant, Picton	44	41	34	35	33	32
Capacity	111	111	111	111	111	111
Unfilled Places	67	70	77	76	78	79
Unfilled Places %	60.36%	63.06%	69.36%	68.46%	70.27%	71.17%

- 4.10 The table below displays the historic birth rate for the period 2008-2013 for the Gwespwr Picton Area. There has been a decline in birth rates in the area since 2010.

Ward	Historic Births					
	2008	2009	2010	2011	2012	2013
Ffynnongroyw	16	15	23	14	20	18
Gronant	19	16	13	11	11	9
Trelawnyd and Gwaenysgor	17	14	14	7	18	11
TOTAL	52	45	50	32	49	38

(Source: provided by Flintshire School Management Information Team)

- 4.11 Where unfilled places become disproportionate it can impact negatively on the resourcing of education. In 2012 Estyn² published 'How do surplus places affect the resources available for expenditure on improving outcomes for pupils?' This document is available at <http://www.estyn.gov.uk/english/docViewer/244416.9/how-do-surplus-places-affect-the-resources-available-for-expenditure-on-improving-outcomes-for-pupils-may-2012/?navmap=30,163>

Estyn commented that 'where there is a higher than necessary level of school places, resources are being deployed inefficiently that could be better used to improve the quality of education for all learners'.

- 4.12 The Welsh Government has set every Authority in Wales a target of reducing unfilled places county wide to 10% across the primary and secondary sectors, however it is necessary to have a certain level of unfilled places so that schools

² Estyn is the office of Her Majesty's Inspectorate for Education and Training in Wales. Estyn are independent of, but funded by, the National Assembly for Wales. The purpose of Estyn is to inspect quality and standards in education and training in Wales.

can respond accordingly to fluctuations in pupil numbers to meet parental demand sufficiently whilst maintaining a balance of provision.

- 4.13 Where unfilled places are reduced it allows for financial resource to be re-directed, specifically for teaching and learning within our schools. Reducing unfilled places is not solely an exercise in resource management but part of a wider strategy to improve outcomes and standards for all pupils in the longer term.
- 4.14 The development of school organisation proposals should also have regard to local plans, including housing. Potential pupils which could be generated from new housing developments is calculated using a housing yield formula. The housing yield formula has been derived from researching the work of several authorities.

The current housing yield formula for primary is as follows:-

Number of housing units x 0.24 (primary school formula) = child/pupil yield

The housing yield figures are maximum figures and do not take into account parental choice and/or pupil movement i.e. pupils moving into the new homes but who are already in the local education system.

There are no current housing development planning applications approved for the Gronant area.

The current housing development planning applications approved for the Gwespyr Picton area are listed below.

Potential Housing Developments – Fynnongroyw

Planning Reference	No of Units	Description	Potential Child/Pupil Yield (Primary only)
049970	11	Crown Inn Main Road	3

Potential Housing Developments – Dyserth (Denbighshire)

Planning Reference	No of Units	Description	Potential Child/Pupil Yield (Primary only)
3643	20 per year	Land adjacent to Glan Ffyddion Estate	5 per year

Potential Housing Developments – Prestatyn (Denbighshire)

Planning Reference	No of Units	Description	Potential Child/Pupil Yield (Primary only)
3619	65	Midnant Farm	16

Potential Housing Developments – Meliden (Denbighshire)

Planning Reference	No of Units	Description	Potential Child/Pupil Yield (Primary only)
3621	15 (starting 2018)	Ffordd Hendre	4

- 4.15 Based on the demographic, pupil numbers and housing information for the Gwespyr Picton area, should Ysgol Gymraeg Mornant, Picton close then pupils can be accommodated in existing Welsh Medium School provision, subject to parental choice.
- 4.16 Flintshire County Council seeks to maintain and improve the current high quality provision within Welsh medium primary schools. However should the status quo remain there is a risk that the quality and standard of education within the Gwespyr-Picton area could be adversely impacted as reducing resources would still need to be spent on maintaining buildings, administration and leadership, at the detriment to teaching and learning.
- 4.17 The level of austerity the Council faces in the coming years is unprecedented. The Council's priority is and remains sustaining the high quality of learning for children and young people across the County. Austerity is already having a direct impact on school budgets, resulting in loss of teaching posts and many Teaching Assistant hours being lost in schools this year, despite protecting schools above other services. With more expected in the coming years, doing nothing will lead to a rise in pupil teacher ratios, and inability to address the learning environment.
- 4.18 Placed in the context of challenges facing educational provision, level of austerity and sustainability of high quality educational provision, the Council is bringing forward this proposal to close Ysgol Gymraeg Mornant, Picton as of 31st August 2016 with existing pupils transferring to alternative schools subject to parental preference.

5. Benefits, disadvantages and risks of the proposal

5.1 Should the proposal be implemented it is expected that the following benefits would be realised.

1.	The proposals would at least maintain the current standards and quality of education for the future which the Council are seeking to strengthen. The proposal would, in the view of the Council, improve the current standards of Welsh medium education with the area and in the longer term would be to the benefit of all pupils within the area. (Covered in detail in section 7 of this document).
2.	The proposal to close Ysgol Gymraeg Mornant, Picton would result in a reduction of unfilled pupil places within the primary school network in line with National Policy.
3.	The proposal would lead to a reduction in the costs per pupil across the primary school network.
4.	The proposal would contribute to the greater efficiency and effectiveness of the school estate by re-directing resources to teaching and learning.
5.	The proposal protects all learners within Flintshire from reducing resources.

5.2 Where school organisation proposals are brought forward there will be some disadvantages. The disadvantages of the proposal are as follows:

1.	The proposal would result in the closure of Ysgol Gymraeg Mornant, Picton, therefore Welsh medium primary provision would cease in the hamlet of Gwespyr-Picton.
2.	Most pupils may be required to travel further to the nearest appropriate Welsh Medium school and increase travel time.
3.	The proposal would impact on staff. They may be redeployed or made redundant as a result of the proposal.

5.3 Many of the risks associated with the proposal arise from the disadvantages of the proposal outlined above. The risks and measures required to minimise or negate the impact of these risks are outlined below:

Disadvantages/Risk	Risk Management
Pupils may be required to travel further to school	In most instances pupils will be required to travel further to school. In line with the Council's home to school transport policy, Free Home to school transport will be provided to Welsh Medium provision. Both Ysgol Gwenffrwd, Holywell and Ysgol Y Llys, Prestatyn are over two miles from Ysgol Gymraeg Mornant, Picton therefore parents will be eligible for transport to Ysgol

	<p>Gwenffrwd or Ysgol Y Llys (should it be geographically nearer). Transport would also be available to English Medium or faith based provision in line with Transport policy. In all cases travel times are within the Welsh Government Transport Measure.</p> <p>A small number of pupils at Ysgol Gymraeg Mornant, Picton currently live in Denbighshire. Transport is determined by the Council in which pupils reside. Denbighshire County Council are aware of the consultation and copy of the consultation document will be forwarded to Denbighshire County Council.</p>
Staff may be redeployed or made redundant	<p>Should the proposal be implemented, the Council will work with the current members of staff at Ysgol Gymraeg Mornant, Picton, should they wish to seek redeployment or retirement opportunities.</p> <p>The governing body of the school will need to apply its own organisational change and redundancy policy. Support for all staff will be provided during this time through the school's leadership team and the Council. Staff displaced by the proposal may have the opportunity to be employed in the local primary network.</p>
Potential negative impact on the community of Gwespyr Picton.	<p>The Council acknowledges that where a school closure is proposed it will have some impact on the community. The Community Impact Assessment completed for this proposal has shown that whilst there is some community use of the school it is not extensive. Should the proposal be implemented there may be an opportunity for the community to retain the use of the buildings. A separate exercise will be conducted by the Council once the future of the school has been determined. The Community Impact Assessment can be found on the Flintshire County Council website by following the link below:</p> <p>www.flintshire.gov.uk/schoolmodernisation</p>
Language Impact	<p>A detailed Welsh Language Impact Assessment has been undertaken and can be found in section 13.</p> <p>www.flintshire.gov.uk/schoolmodernisation</p>

5.4 All risks will be monitored by Flintshire County Council's, Education and Youth Programme Board. By monitoring and ensuring there is a robust approach to

management of risks and disadvantages that could potentially impact on pupils/parents/carers/teachers and support staff can be minimised. An evaluation on the impact on pupils, teachers and support staff can be found in section 14 and 15 of this document respectively.

- 5.5 In view of the advantages, risks and disadvantages, the Council believe that the longer term benefits of the proposal, such as a reduction in unfilled places, improved educational outcomes, benefits for pupils across Flintshire and a reduction in cost per pupil outweigh any disadvantages.
- 5.6 Flintshire County Council has carefully considered a number of options when formulating school modernisation proposals for the Gwespyr Picton area. In considering these options, reference has been made to the main objectives of the School Modernisation Strategy and the key drivers for the Gwespyr Picton area review as detailed in section 2 and 3 of this document.
- 5.7 A number of options have been considered including maintaining the status quo, federation or amalgamation of Ysgol Gymraeg Mornant, Picton within another Welsh Medium school.
- 5.8 The options that have been explored by the Council are detailed in section 12 of this document.
- 5.9 This proposal has been developed in line with the Learner Travel (Wales) Measure 2008. The Council supports learners with free home to school transport if they meet criteria contained within its Home to School Transport Policy (more details are in section 17). For the modelling of the estimating transport costs as a result of the proposal the Council have assumed the full and projected pupils for the Ysgol Gymraeg Mornant, Picton cohort (statutory school age only) will be provided with free transport to Ysgol Gwenffrwd, Holywell. The estimated annual cost of this provision would be £26,600.
- 5.10 Due to the location of Ysgol Gymraeg Mornant, Picton, there are limited available routes in the area which enable pupils to walk or cycle to school, therefore the majority of pupils of statutory school age are provided with free home to school transport as per Council Policy. Should the proposal be implemented the majority of pupils of statutory school age would be eligible for free transport as per the Council's Policy. However for most pupils this would result in an increased travel distance to the nearest Welsh Medium school, however, travel times would be well within the Learner Travel (Wales) Measure 2008.
- 5.11 A small number of pupils at Ysgol Gymraeg Mornant, Picton reside in the county of Denbighshire. Transport eligibility is assessed by the Council in which you

reside, therefore pupils that live in Denbighshire would need to apply to Denbighshire County Council to ascertain their eligibility. A copy of the consultation document will be sent to Denbighshire County Council. Denbighshire's Home to transport policy can be found at the following link:

<https://www.denbighshire.gov.uk/en/resident/education/grants-and-funding/free-school-transport.aspx>

- 5.12 A separate Transport Impact assessment for this proposal, has been conducted, and can be found via the following link:

www.flintshire.gov.uk/schoolmodernisation

6. What will be the impact of the proposals on the Quality and Standards in Education?

- 6.1 The formulation of this proposal has given careful consideration to the likely impact of the proposal on the quality of outcomes, provision and leadership and management. This section provides information for consultees regarding the current provision at Ysgol Gymraeg Mornant, Picton, Ysgol Gwenffrwd, Holywell and Ysgol Y Llys, Prestatyn with an evaluation of the impact on quality and standards in education should the current proposal be implemented.

Current Provision: Ysgol Gymraeg Mornant, Picton, Ysgol Gwenffrwd, Holywell and Ysgol Y Llys, Prestatyn.

- 6.2 Ysgol Gymraeg Mornant, Picton is located in the village of Picton it is a Welsh Medium primary school for pupils aged 3-11 years of age. .
- 6.3 Ysgol Gwenffrwd, Holywell is located in the town of Holywell, approximately 6.69 miles from Ysgol Gymraeg Mornant, Picton. Ysgol Gwenffrwd, is a Welsh Medium primary school for pupils aged 3-11 years of age.
- 6.4 Ysgol Y Llys, Prestatyn is located in the town of Prestatyn within Denbighshire County Council, approximately 4.37 miles from Ysgol Gymraeg Mornant, Picton. Ysgol Y Llys is a Welsh Medium primary school for pupils aged 3-11 years of age.

6.5 The table below displays the full and part time number of pupils on roll for the past 5 year period based on January PLASC

Pupils	Jan 2011		Jan 2012		Jan 2013		Jan 2014		Jan 2015	
	FT	PT	FT	PT	FT	PT	FT	PT	FT	PT
Ysgol Gymraeg Mornant, Picton	63	4	58	6	57	4	52	3	48	5
Ysgol Gwenffrwd, Holywell	160	25	172	32	180	31	195	39	202	28
Ysgol Y Llys, Prestatyn	262	40	254	40	245	56	260	48	272	60

(FT – Full Time, PT – Part Time)

6.6 The table below displays the Full Time Capacity, Admission Number and Unfilled Places based on January 2015 PLASC for Ysgol Gymraeg Mornant, Picton.

Capacity (Full Time)	Admission Number	Number on Roll January 2015 (Full Time)	Unfilled Places	% of Unfilled Places
111	15	48	63	56.76%

The current School capacity is officially 111. However this current capacity assessment includes a mobile classroom, which has since been removed. A reassessment of the capacity would reduce the schools full time capacity to 81 full time places which would reduce the unfilled places from 56.76% to 40.74% based on January 2015 pupil numbers or 45.67% unfilled places based on September 2015 pupil numbers.

However, a reduction in the capacity would require the Council to formalise via a publication of notice (Statutory proposal) based on the Measuring the Capacity of schools in Wales guidance. If the capacity of the school was reduced, the school would still trigger under the unfilled places criteria. Additionally as the school is already in the formal process of consultation on statutory school closure as per the School Organisation Code which takes precedence. Should the school remain open the Council will formally review the capacity assessment.

6.7 Pupils in Ysgol Gymraeg Mornant, Picton are taught in mixed age groups. Pupils in Ysgol Gwenffrwd are taught in single age groups. Pupils in Ysgol Y Llys is a 2 form entry school, the current classroom structures are Nursery and Reception combined over three classes, Year 1 alone over 2 classes, Year 2 alone over 2 classes, Years 3 and 4 combined over three classes and Years 5 and 6 combined over three classes.

- 6.8 The tables below display the breakdown of pupils by year group (January and September 2015 PLASC)

Ysgol Gymraeg Mornant, Picton (Welsh Medium)								
	Nursery	Reception	Year 1	Year 2	Year 3	Year 4	Year 5	Year 6
Jan PLASC 2015	5	3	6	7	5	11	9	7
Sept 2015	5	5	3	5	7	4	11	8

The breakdown of Ysgol Gymraeg Mornant, Picton pupils also includes pupil numbers as at September 2015.

Ysgol Gwenffrwd, Holywell (Welsh Medium)							
Nursery	Reception	Year 1	Year 2	Year 3	Year 4	Year 5	Year 6
28	38	32	28	22	35	26	21

January 2015 PLASC

Ysgol Y Llys, Prestatyn (Welsh Medium)							
Nursery	Reception	Year 1	Year 2	Year 3	Year 4	Year 5	Year 6
60	48	53	39	38	35	36	23

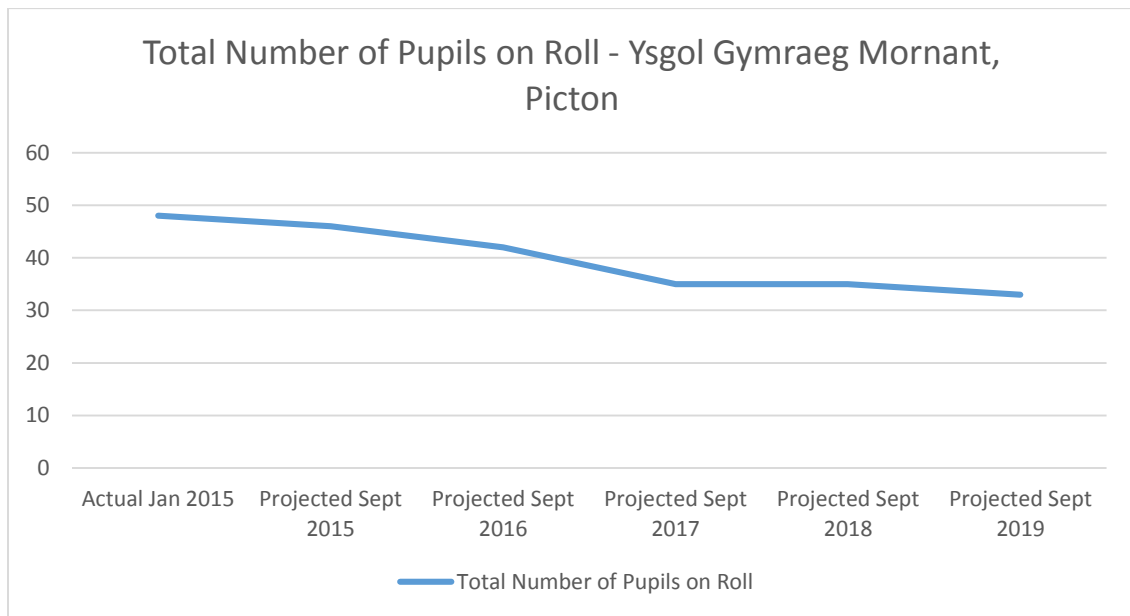
January 2015 PLASC

- 6.9 The tables in the following pages display more detailed pupil projections for Ysgol Gymraeg Mornant, Picton and the nearest appropriate schools named within the documents and provides pupil forecasts based on school census data.

Numbers of full time Pupils on Roll and Projected Number of Pupils – Ysgol Gymraeg Mornant, Picton (Projected Numbers)

Source: Actual figures Jan PLASC (2015) Projections (produced May 2015 using PLASC data Jan 2015) (Projection figures are rounded up/down)

Age	Actual Jan 15	Projected Sept 15	Projected Sept 16	Projected Sept 17	Projected Sept 18	Projected Sept 19
Reception	3	5	5	4	5	5
Year 1	6	3	5	5	4	5
Year 2	7	6	3	5	5	4
Year 3	5	7	6	3	5	5
Year 4	11	5	7	6	3	5
Year 5	9	11	5	7	6	3
Year 6	7	9	11	5	7	6
Total NOR	48	46	42	35	35	33

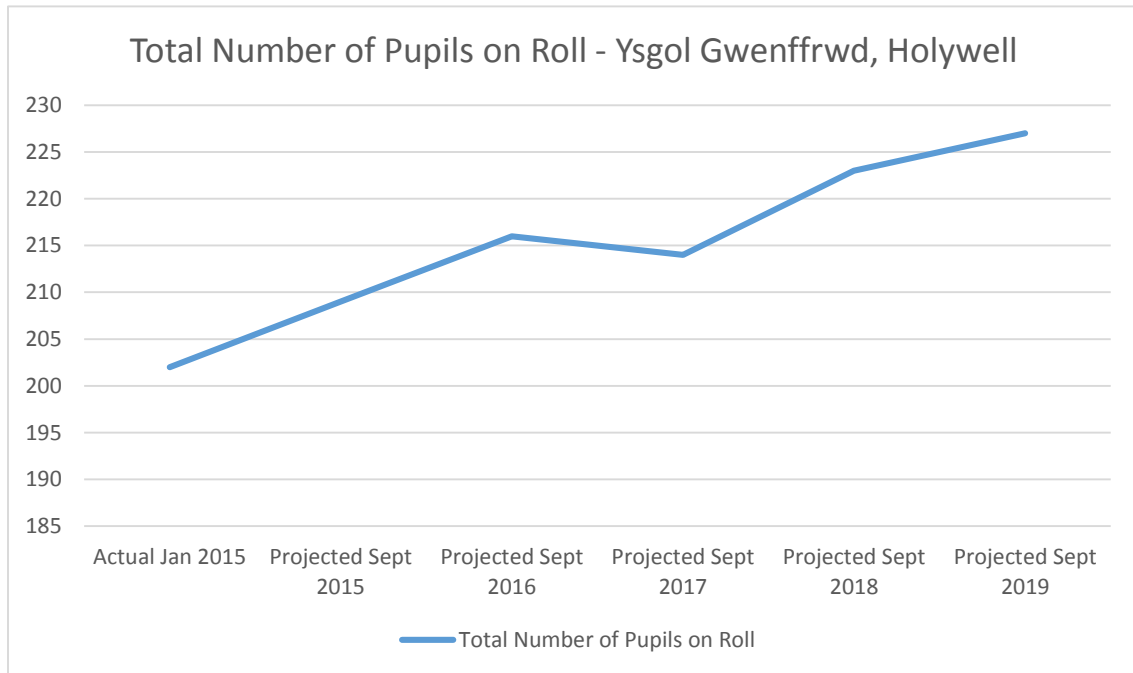


*Projected figures from September 2015 are not illustrated above as official school returns September 2015 have been verified with Ysgol Gymraeg Mornant, Picton and Flintshire's School Management Information Team. However, based on the number of current pupils on the Council's ONE System, projections for Ysgol Mornant, Picton will reduce, this is a net result of the low number intake into the school, and some movement of pupils in other year groups to other schools. The Council acknowledges that statutory consultation around school organisation change can cause a level of uncertainty within the local school community, which can be a contributory factor in pupil number reduction.

Numbers of full time Pupils on Roll and Projected Number of Pupils – Ysgol Gwenffrwd, Holywell (Projected Numbers)

Source: Actual figures Jan PLASC (2015) Projections (produced May 2015 using census data Jan 2015) (Projection figures are rounded up/down)

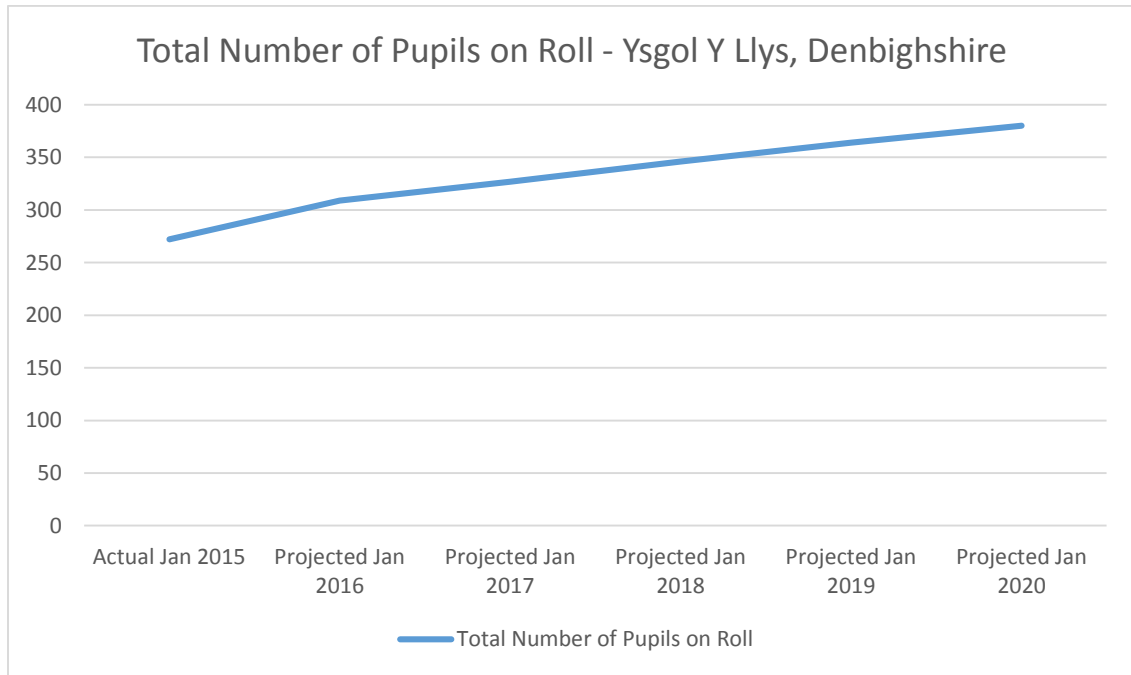
Age	Actual Jan 15	Projected Sept 15	Projected Sept 16	Projected Sept 17	Projected Sept 18	Projected Sept 19
Reception	38	28	33	33	31	32
Year 1	32	38	28	33	33	31
Year 2	28	32	38	28	33	33
Year 3	22	28	32	38	28	33
Year 4	35	22	28	32	38	28
Year 5	26	35	22	28	32	38
Year 6	21	26	35	22	28	32
Total NOR	202	209	216	214	223	227



Numbers of full time Pupils on Roll and Projected Number of Pupils – Ysgol Y Llys, Prestatyn (Projected Numbers)

Source: Actual figures Jan PLASC (2015) Projections (produced May 2015 using census data Jan 2015) (Projection figures are rounded up/down)

Age	Actual Jan 15	Projected Jan 16	Projected Jan 17	Projected Jan 18	Projected Jan 19	Projected Jan 2020
Reception	48	60	54	54	56	55
Year 1	53	48	60	54	54	56
Year 2	39	53	48	60	54	54
Year 3	38	39	53	48	60	54
Year 4	35	38	39	53	48	60
Year 5	36	35	38	39	53	48
Year 6	23	36	35	38	39	53
Total NOR	272	309	327	346	364	380



6.10 The Additional Learning Needs averages for Ysgol Gymraeg Mornant, Picton and the nearest appropriate schools for the past 5 year period are provided in the table below alongside local and national averages. In some instances the data set is incomplete as this may lead to the identification of individual pupils due to low numbers within the related cohort and therefore have been omitted.

	2010	2011	2012	2013	2014
Ysgol Gymraeg Mornant, Picton School Action	*	*	11.3%	10.0%	*
Ysgol Gwenffrwd, Holywell School Action	28.9%	24%	18.3%	15.5%	21.0%
Ysgol Y Llys, Prestatyn School Action	13.5%	17.4%	20.4%	18.8%	13.6%
Local Authority (Flintshire) School Action Average	13.4%	13.0%	13.6%	12.6%	12.1%
Local Authority (Denbighshire) School Action Average	12.2%	12.9%	12.8%	12.5%	12.5%
Wales School Action Average	15.5%	15.2%	15.6%	15.2%	15.1%
Ysgol Gymraeg Mornant, Picton School Action Plus	*	9.8%	13.2%	18%	17%
Ysgol Gwenffrwd, Holywell School Action Plus	*	5.0%	4.2%	6.1%	13.6%
Ysgol Y Llys, Prestatyn School Action Plus	11.6%	6.4%	4.3%	5.3%	8.3%
Local Authority (Flintshire) School Action Average Plus	7.2%	7.1%	6.7%	7.1%	7.0%
Local Authority (Denbighshire) School Action Average Plus	11.5%	10.6%	11.8%	12.2%	12.8%
Wales School Action Average Plus	8.5%	8.7%	8.9%	9.2%	8.8%
Ysgol Gymraeg Mornant, Picton Statemented	*	*	*	*	*
Ysgol Gwenffrwd, Holywell Statemented	*	*	*	*	*
Ysgol Y Llys, Prestatyn Statemented	*	*	*	*	*
Local Authority (Flintshire) Statemented Average	1.9%	1.6%	1.4%	1.2%	1.3%
Local Authority (Denbighshire) Statemented Average	1.4%	1.4%	1.1%	0.9%	1.1%
Wales Statemented Average	2.0%	1.9%	1.8%	1.7%	1.7%

Source: *mylocalschool wales gov – July 2015*

6.11 There are currently fewer than 10* pupils with English as an Additional Language (EAL) at Ysgol Gymraeg Mornant, Picton, Ysgol Gwenffrwd, Holywell and Ysgol Y Llys, Prestatyn.

6.12 The table below displays the pupil teacher ratios for the last academic year (2014).

School	Ratio
Ysgol Gymraeg Mornant, Picton	15.3
Ysgol Gwenffrwd, Holywell	18
Ysgol Y Llys, Prestatyn	20.2

Source: *mylocalschool wales gov – July 2015*

6.13 Ysgol Gymraeg Mornant, Picton was last inspected by Estyn in October 2014.

The Estyn report summarised as follows:

The school's current performance	Adequate
The school's prospects for improvement	Good

Judgement	Meaning
Excellent	Many strengths, including significant examples of sector-leading practice
Good	Many strengths and no important areas requiring significant improvement
Adequate	Strengths outweigh areas for improvement
Unsatisfactory	Important areas for improvement outweigh strengths

Key Question	School's Performance
KS1 - How good are outcomes?	Adequate
Standards	Adequate
Wellbeing	Good
KS2- How good is provision?	Adequate
Learning experiences	Good
Teaching	Adequate
Care, support and guidance	Good
Learning environment	Good
KS3 - How good are leadership and management?	Good
Leadership	Good
Improving quality	Good
Partnership working	Good
Resource management	Good

Current Performance

The school's current performance is adequate because:

- Most pupils make sound progress in their learning;
- Standards in literacy and numeracy throughout the school are good;
- Pupils enjoy coming to school and behave politely and courteously;
- Most pupils have a clear idea of their strengths and what they need to do to improve;
- Stimulating learning experiences meet the needs of the full range of pupils;
- There is comprehensive provision for developing the Welsh language and the Welsh dimension; and
- The quality of support and care for pupils is comprehensive and effective.

However,

- Pupils' achievement at the end of the Foundation Phase in the last two years has been low;
- There are not enough opportunities for pupils to lead their own learning; and
- Teachers do not make enough use of assessment information to plan the next stages in pupils' learning

Prospects for improvement

The school's prospects for improvement are good because:

- The headteacher's strategic leadership is robust and purposeful and has led to improvements in standards and provision;
- Staff and governors have a sound understanding of the school's strengths and areas that need to be improved;
- a wide range of partnerships promote pupils' learning and wellbeing effectively;
- the school responds positively to the parents' voice ; and
- the school's financial management is sound.

Recommendations

R1	Improve pupils' performance at the end of the Foundation Phase
R2	Provide better opportunities for pupils to lead their own learning
R3	Make more use of assessment information for planning the next stages in pupils' learning
R4	Ensure better consistency in the quality of pupils' handwriting in key stage 2

Full Estyn Report is available at the following link:

<http://www.estyn.gov.wales/provider/ysgol-gymraeg-mornant>

6.14 Ysgol Gwenffrwd, Holywell was last inspected by Estyn in January 2011.

The Estyn report summarised as follows:

The school's current performance	Good
The school's prospects for improvement	Good

Judgement	Meaning
Excellent	Many strengths, including significant examples of sector-leading practice
Good	Many strengths and no important areas requiring significant improvement
Adequate	Strengths outweigh areas for improvement
Unsatisfactory	Important areas for improvement outweigh strengths

Key Question	School's Performance
KS1 - How good are outcomes?	Good
Standards	Good
Wellbeing	Excellent
KS2 - How good is provision?	Good
Learning experiences	Good
Teaching	Good
Care, support and guidance	Good
Learning environment	Good
KS3 - How good are leadership and management?	Good
Leadership	Good
Improving quality	Good
Partnership working	Good
Resource management	Good

Current Performance
<p>The school's current performance is good because:</p> <ul style="list-style-type: none"> • almost all pupils are making good progress or better in the Foundation Phase and in key stage 2, • the school provides a wide and balanced range of stimulating experiences for all pupils that fully meet the requirements of the Foundation Phase, the national curriculum and religious education; • the teaching is consistently good with excellence shown in some lessons; and • the children's behaviour is exceptional throughout the school and their attitudes reflect their full participation in learning.

Prospects for improvement	
The school's prospects for improvement are good because:	
<ul style="list-style-type: none"> • the leadership of the headteacher and the senior management team is good and they have established a culture that encourages improvement. • The self-evaluation arrangements are a strength of the school; • The school has made good progress in responding to the recommendations of the previous inspection; and • The governing body has a comprehensive knowledge of the school's performance in comparison with other similar schools. 	

Recommendations	
R1	Continue to improve the writing of key stage 2 pupils; and
R2	Refine the school's procedures in terms of responding to the needs of the more able and talented pupils

Full Estyn Report is available at the following link:

<http://www.estyn.gov.wales/provider/ysgol-gwenffrwd>

6.15 Ysgol Y Llys, Prestatyn was last inspected by Estyn in December 2012.

The Estyn report summarised as follows:

The school's current performance	Good
The school's prospects for improvement	Good

Judgement	Meaning
Excellent	Many strengths, including significant examples of sector-leading practice
Good	Many strengths and no important areas requiring significant improvement
Adequate	Strengths outweigh areas for improvement
Unsatisfactory	Important areas for improvement outweigh strengths

Key Question	School's Performance
KS1 - How good are outcomes?	Good
Standards	Good
Wellbeing	Excellent
KS2 - How good is provision?	Excellent

Learning experiences	Excellent
Teaching	Good
Care, support and guidance	Excellent
Learning environment	Excellent
KS3 - How good are leadership and management?	Good
Leadership	Good
Improving quality	Good
Partnership working	Good
Resource management	Good

Current Performance

Ysgol Y Llys' performance is good because:

- Most pupils make progress and achieve well;
- The quality of pupils' oral work in Welsh across the school is very good, considering their starting point;
- Levels of attendance and behaviour are high and almost all pupils are enthusiastic and eager to learn;
- Rich and stimulating learning experiences and effective teaching motivate nearly all pupils to learn and take pride in their Welshness;
- There is a family ethos that is very caring and welcoming, in which pupils feel safe and happy and are treated with respect; and
- The excellent support and guidance contribute significantly to pupils' wellbeing and have a very positive effect on learning.

Prospects for improvement

Prospects for improvement are good because:

- The headteacher has a clear vision, based on promoting Welshness and children's wellbeing, that has been conveyed successfully to staff, pupils, parents and governors;
- All members of staff work as a team and understand their role in implementing the school's plans;
- Effective self-evaluation arrangements identify suitable priorities that place a clear emphasis on raising standards; and
- Effective co-operation with a range of partnerships has a positive effect on pupils' wellbeing and achievement.

Recommendations	
R1	Raise standards of extended writing across the curriculum in Welsh in key stage 2
R2	Ensure learning activities that will extend pupils of all abilities fully
R3	Ensure consistency in assessment for learning practice by ensuring that pupils take a more active part when evaluating their work and setting targets for improvement
R4	Ensure that self-evaluation arrangements are more analytical in relation to the effectiveness of the school's systems and strategies

Full Estyn Report is available at the following link:

<http://www.estyn.gov.wales/provider/ysgol-y-llys>

- 6.16 The data included within the tables below provides the outcomes at the end of the Foundation Phase (7 year olds) and Key Stage 2 (11 year olds) for Ysgol Gymraeg Mornant, Picton, Ysgol Gwenffrwd, Holywell and Ysgol Y Llys, Prestatyn against local, national and their respective family averages for the last three years of verified data (2012-2014).

The Foundation Phase Outcome Indicator is achieved when the national benchmark for 7 year olds (Outcome 5 or above) is reached by a pupil in the three core areas of learning of Language, Literacy & Communication; Mathematical Development and Personal & Social Development, Well-Being & Cultural Diversity.

The Core Subject Indicator is achieved when the national benchmark for 11 year olds (National Curriculum Level 4 or above) is reached by a pupil in the three core subjects of English, Maths and Science.

As a small school, Ysgol Gymraeg Mornant, Picton size of pupil cohorts in the statutory assessment year at Ysgol Gymraeg Mornant have regularly been below the number where they are required to share data in the public domain and would account for it being absent from websites such as My Local School. This is a Welsh Government agreed procedure to protect individual pupils who may be easily identified. However, for the purposes of this consultation document it is included below.

As a small school with very small pupil cohorts, where one pupil can represent a large percentage or even all of the cohort, it needs to be acknowledged that comparisons of performance year on year are statistically unreliable and need to be treated with caution.

7 year olds	Foundation Phase Outcome Indicator		
	2012	2013	2014
Ysgol Gymraeg Mornant, Picton	44.4%	50.0%	50.0%
Family Average	78.6%	79.4%	82.9%
Local Average	79.7%	84.4%	84.5%
National Average	80.5%	83.0%	85.2%

7 year olds	Foundation Phase Outcome Indicator		
	2012	2013	2014
Ysgol Gwenffrwd, Holywell	76.9%	75.7%	80.8%
Family Average	78.4%	83.7%	84.4%
Local Average	79.7%	84.4%	84.5%
National Average	80.5%	83.0%	85.2%

7 year olds	Foundation Phase Outcome Indicator		
	2012	2013	2014
Ysgol Y Llys, Prestatyn	90.2%	94.9%	86.8%
Family Average	81.5%	81.5%	87.8%
Local Average	81.7%	84.9%	86.1%
National Average	80.5%	83.0%	85.2%

11 year olds	Core Subject Indicator		
	2012	2013	2014
Ysgol Gymraeg Mornant, Picton	88.9%	75.0%	87.5%
Family Average	92.5%	84.4%	86.3%
Local Average	81.3%	85.0%	86.1%
National Average	82.6%	84.3%	86.1%

11 year olds	Core Subject Indicator		
	2012	2013	2014
Ysgol Gwenffrwd, Holywell	82.4%	88.2%	90.0%
Family Average	88.1%	84.7%	87.7%
Local Average	81.3%	85.0%	86.1%
National Average	82.6%	84.3%	86.1%

11 year olds	Core Subject Indicator		
	2012	2013	2014

Ysgol Y Llys, Denbighshire	91.9%	86.2%	86.7%
Family Average	88.4%	86.7%	88.7%
Local Average	83.5%	86.0%	86.6%
National Average	82.6%	84.3%	86.1%

- 6.17 The National School Categorisation System has now been introduced in Wales. The National School Categorisation System provides a clear and simple way of understanding how well a school is performing for all its pupils, how effectively it is led and managed, the quality of teaching and learning and the level of support and challenge it needs to do even better.

Further information regarding the National School Categorisation System for schools can be found in the guidance document published by the Welsh Government which provides definitions for each of the outcomes.

The categorisation of each school will be published annually; the most recent categorisation information from January 2014 for Ysgol Gymraeg Mornant, Picton, Ysgol Gwenffrwd, Holywell and Ysgol Y Llys, Denbighshire is displayed below:

Ysgol Gymraeg Mornant, Picton	
Standards Group	4
Improvement Capacity	B
Support Category	Amber

Ysgol Gwenffrwd, Holywell	
Standards Group	3
Improvement Capacity	A
Support Category	Yellow

Ysgol Y Llys, Prestatyn	
Standards Group	3
Improvement Capacity	B
Support Category	Yellow

Summary of Data: Local Primary schools (Jan 2014) Source: My local school:-

	Ysgol Gymraeg Mornant, Picton	Ysgol Gwenffrwd, Holywell	Ysgol Y Llys, Prestatyn
Number of pupils on roll (Year: 2014)	55	234	308
Free school meals (FSM) - 3 year average (Year: 2014)	14%	8.8%	10.1%
Pupil Teacher Ratio (PTR) (Year: 2014)	15.3	18	20.2
% Attendance during the year (Year: 2014)	94.4%	96.3%	94.9%
School budget per pupil (Year: 2015)	£4,201	£3,019	£3,681
Support category (Year: 2014)	Amber	Yellow	Yellow
% Pupils achieving the expected level in the Foundation Phase Areas of learning (Year: 2014)	*	80.8%	86.8%
% Pupils achieving the expected level in the core subjects in core subjects at Key Stage 2 (Year: 2014)	87.5%	90%	86.7%

6.18 Ysgol Gymraeg Mornant, Picton currently has a permanent Headteacher. Ysgol Gwenffrwd, Holywell and Ysgol Y Llys, Prestatyn currently have permanent Headteachers.

6.19 Ysgol Gymraeg Mornant, Picton does not offer wrap-around care³, but it has a Cylch Meithrin group which operates from the school site. Ysgol Gwenffrwd, Holywell does offer wrap-around care via a Cylch Meithrin group which operates from the school site. Ysgol Y Llys, Denbighshire does not offer wrap-around care but has a Cylch Meithrin group which operates from the school site.

7. Evaluation of the Impact of the Proposal on the Quality and Standard of Education

7.1 It is the view of the Council that should the current proposal be implemented it would improve the current standard and quality of Welsh medium education within the area and more specifically for the pupils of Ysgol Gymraeg Mornant, Picton. The review has set out to address challenges within the area that have the potential to impact upon the sustainability of high quality provision in the future. This proposal and related proposals seek to maintain the current

³ Wrap-around care is defined as Childcare which is provided at the school outside of core early years hours offered as pre nursery sessions

standard with a view to strengthening and improving educational provision within the area for the following reasons:

- Outcomes (standards and wellbeing)
- Provision (learning experiences, teaching, care, support and guidance, and learning environment)
- Leadership and Management (Leadership, improving quality, partnership working and resource management)

Impact on Outcomes – Standards and Wellbeing and Curriculum Delivery

- 7.2 It is the view of the Council that the proposal would at least maintain the current standard of outcomes and attainment should the proposal be implemented. Ysgol Gwenffrwd, Holywell and Ysgol Y Llys, Denbighshire would continue to provide all pupils with a broad and balanced curriculum at both Foundation Phase and Key Stage 2.
- 7.3 The outcomes of pupils at Ysgol Gwenffrwd, Holywell and Ysgol Y Llys, Prestatyn are set out in section 6 of this document against family, local and national averages. The outcomes for the Gwespyr Picton as a whole are below the local and national average and indicate that there is a concern about the quality educational provision within the area of Gwespyr-Picton. Should the proposal be implemented the current pupils at Ysgol Gymraeg Mornant, Picton would have access to alternative provision that has higher standards to that the pupils currently receive.
- 7.4 Ysgol Gwenffrwd, Holywell and Ysgol Y Llys, Prestatyn offer a full, broad and balanced curriculum. Should the current proposal be implemented Ysgol Gwenffrwd, Holywell and Ysgol Y Llys, Prestatyn would be able to continue delivering the curriculum at both foundation phase and key stage should they receive pupils as a result of this proposal being implemented. Ysgol Gwenffrwd, Holywell and Ysgol Y Llys, Prestatyn would not be adversely impacted in terms of curriculum delivery should they receive pupils as a result of this proposal being implemented.
- 7.5 There are unfilled places within each of the alternative schools, a rise in pupil numbers at these schools as a result of the proposal would not negatively impact on the capability of the school to deliver the curriculum.
- 7.6 Pupils in Ysgol Gymraeg Mornant, Picton are taught in mixed age year groups and taught within their appropriate key stage. Ysgol Gwenffrwd, Holywell are taught in single age year groups. Pupils in Ysgol Y Llys, Prestatyn are taught in mixed age year groups and taught within their appropriate key stage. In

December 2013 Estyn published a report 'School size and educational effectiveness'. The study found that small schools faced greater challenges in terms of curriculum delivery. This is linked to the financial constraints faced by small schools as school funding is linked to pupil numbers. Where pupil numbers are small, schools are restricted by these funding issues when establishing a staffing body.

- 7.7 Schools with higher pupil numbers, such as Ysgol Gwenffrwd, Holywell and Ysgol Y Llys, are able to recruit a broader range of teaching staff and middle management teams to establish subject and curriculum leads. Staff have more opportunity to specialise in different knowledge and subject areas which helps drive standards and outcomes. In small schools staff must adequately plan for a wide range of pupils of differing ages and abilities; staff development opportunities are reduced where staff are fewer within a school.

8.0 Alternative provision

- 8.1 The Council acknowledges that parents/pupils may wish to choose a school other than their nearest appropriate school should the current proposal be implemented. This section contains information relating to the identified alternative schools within the area that may be impacted should this proposal progress. Relevant information relating to these schools including the most recent Estyn reports, outcomes at the end of the Foundation Phase and Key Stage 2, numbers of pupils on roll, pupil forecasts can be found in section 4 and 6 of this document.
- 8.2 The Council has identified schools within Counties of Flintshire and Denbighshire given the location of Ysgol Gymraeg Mornant, Picton. Some pupils live in a neighbouring county, so it is likely to impact on Denbighshire County Council. This document will be sent to Denbighshire County Council as part of the consultation.

- 8.3 The Council has identified the following schools which may be affected by this proposal (Ysgol Gwenffrwd, Holywell and Ysgol Y Llys, Prestatyn).

Schools	Location	Approximate Distance from Ysgol Gymraeg Mornant, Picton (approx.)	Type	Language Category
Ysgol Gwenffrwd, Whitford Street, Holywell, Flintshire, CH8 7NJ	Holywell	6.69 Miles	Community	Welsh Medium
Ysgol Y Llys, Princes Avenue, Prestatyn, Denbighshire, LL19 8RP	Prestatyn	4.37 Miles	Community	Welsh Medium

Distance Source: Route Finder 3.41 Flintshire County Council Mapping System

9. Adequacy of School Accommodation and Impact of the Proposal on the Quality of Accommodation

Asset Management

- 9.1 It is a Welsh Government requirement that Local Authorities keep asset management data for their school's portfolio. Asset Management data is an essential tool to inform strategic decision making (along with other criteria) with regard to school building management for issues such as prioritisation of maintenance programme, capital projects and School Organisational Change.
- 9.2 Asset Management guidance from CLAW (Consortium of Local Authorities in Wales) makes the following statement:

The main practical ways in which the operational estate can adversely affect service delivery are as follows:

- a) Operating from too many buildings
- b) Under-spending on planned maintenance
- c) Operating from inefficient property
- d) Under-investment in appropriate buildings/facilities

When reviewing school buildings and premises, the Council will take into account Statutory requirements and relevant building bulletin guidance.

Condition Information

- 9.3 Flintshire's school Condition surveys are carried out by external consultants using Asset Management DfEE guidelines and include for work required within the next 5 years to bring the property/building up to a good standard. However, minor day-to-day maintenance (e.g. replacement of locks, broken glass, tap washers, etc.) and minor routine works (e.g. inspection, testing, cleaning, servicing, adjusting, overhauling etc.) are generally excluded unless they present a danger to life and limb or would involve a significant risk to health and safety if not carried out. Surveys are graded as follows:

- A - **Good**. Performing as intended and operating efficiently
- B - **Satisfactory**. Performing as intended but exhibiting minor deterioration
- C - **Poor**. Exhibiting major defects and/ or not operating as intended
- D - **Bad**. Life expired and/or serious risk of imminent failure.

Suitability Information

- 9.4 Flintshire's school suitability surveys are carried out by Council Officers following DfEE national asset management guidance and are graded as follows:

- A - **Good**. Facilities suitable for teaching, learning and well-being in schools.
- B - **Satisfactory**. Performing as intended but does not support the curriculum in some areas.
- C - **Poor**. Teaching methods inhibited/adverse impact on school organisation.
- D - **Bad**. Buildings seriously inhibit the staff's ability to deliver the curriculum

Measuring the Capacity of Schools

- 9.5 All Local Authorities are required to use the mandatory Welsh Government method of measuring school capacity using the Measuring Capacity of schools in Wales Assessment form.
- 9.6 Unfilled places are derived from comparing the capacity of the school against pupil number returns (actual pupil numbers) and are categorised as follows on the Council's Asset Management System:
- A - less than 10% unfilled places or 3% over capacity
 - B - 10-25% unfilled places or 4 -10% over capacity
 - C - more than 10% over capacity

D - more than 25% unfilled places or

D - small schools with fewer than 90 places and more than 25% and 30 unfilled
Places

Condition and suitability scores

School	Overall Condition	Overall Suitability
Ysgol Gymraeg Mornant, Picton	B	C
Ysgol Gwenffrwd, Holywell	C	C
Ysgol Y Llys, Prestatyn	A	A

- 9.7 Compared to the Department for Education and Skills - Building Bulletin 99, Briefing Framework for Primary School Projects the following suitability issues were identified:-

The building bulletin 99 document is available at the following link:-

https://www.gov.uk/government/uploads/system/uploads/attachment_data/file/288108/building_bulletin_99_-_briefing_framework_for_primary_school_projects.pdf

Suitability Summary

- 9.8 Ysgol Gymraeg Mornant, Picton Suitability Issues

Ysgol Gymraeg Mornant, Picton was surveyed on 29th January 2008 by Flintshire County Council, and reviewed on 14th December 2009 by EC Harris, Built Asset Consultancy

- Classroom bases fall below minimum standard
- No dedicated hall – Hall space is multi use
- No dedicated meeting room
- No secure reception
- Headteacher shares an office with the secretary
- No dedicated car parking area – staff use a road-side plot outside the school boundary
- Limited hard play in relation to the capacity of the school
- Areas of the school are being underutilised due to pupil numbers

- The Early years hard surface play area is shared at time with the Cylch Meithrin.
- No covered outside learning area
- No soft play area
- One classroom lacks adequate ventilation
- Part of the playing fields is wet and is unusable for most of the year due to poor drainage
- No pupil changing facilities
- No small group rooms (utilise the library area)
- No specialist practical areas
- No studio
- All roads leading to school are narrow lanes

Since the last suitability survey, the following suitability issues have been addressed:-

- There is no covered outside learning area
- Part of the playing fields is wet and is unusable for most of the year due to poor drainage
- No specialist practical areas
- Classroom lacks adequate ventilation – this is not a suitability issue

9.9 Ysgol Gwenffrwd, Holywell Suitability Issues

Ysgol Gwenffrwd, Holywell was surveyed on 28th February 2008 by Flintshire County Council and reviewed on 1st April 2010 by EC Harris, Built Asset Consultancy

- Solar gain issues in a number of classrooms
- Some classrooms fitted with specialist equipment due to the building being a former secondary school
- Early years hard play area is on a slope and accessible via steps
- No disabled access to the Early years play areas
- School is a tiered building on four levels
- There is a narrow entrance into the car park
- There are no drop off facilities
- Car park is too small for staff and visiting parking

9.10 Ysgol Y Llys, Prestatyn

Ysgol y Llys, Prestatyn has recently been through a refurbishment and extension, the works were completed last year. Denbighshire County Council have confirmed that the condition and suitability of Ysgol y Llys, Prestatyn is graded 'A'.

Following the recent works that was undertaken at Ysgol y Lllys, Prestatyn the maintenance backlog has been reduced. There are no current DDA compliance issues at the school.

Backlog Maintenance information

9.11 Priority Codes for backlog maintenance [definition] are as follows:-

Priority 1: Urgent work required to be undertaken within 1 year

Priority 2: Essential work required to be undertaken within 2 years

Priority 3: Desirable work [deemed as] required to be undertaken within 3 to 5 years

Priority 4: Long term work [deemed as] required to be undertaken outside the 5 year [cycle] period

9.12 The element Total 1 - 3 defines a five year financial investment and element 4 defines a six - ten year financial investment.

Ysgol Gymraeg Mornant, Picton (survey date 15th April 2013)

Element	Priority 1 cost estimates (£)	Priority 2 cost estimates (£)	Priority 3 cost estimates (£)	Priority 4 cost estimates (£)	TOTAL
03 Ceilings	0	1,276	0	0	1,276
04 External Walls, windows and Doors	0	2,187	0	0	2,187
05 Internal Walls and Doors	0	495	0	0	495
07 Mechanical Services	0	580	0	0	580
08 Electrical services	0	2,255	0	0	2,255
09 Redecorations	0	2,814	9,686	0	12,499
10 Fixed furniture and fittings	0	0	0	0	0

11 External Areas	0	110	0	0	110
Total	0	9,716	9,686	0	19,402

9.13 Ysgol Gwenffrwd, Holywell (survey date 18th July 2014)

Element	Priority 1 cost estimates (£)	Priority 2 cost estimate (£)	Priority 3 cost estimate (£)	Priority 4 (£)	TOTAL
02 Floors and stairs	0	5,002	74,413	0	79,419
03 Ceilings	0	8,869	244	0	9,113
04 External Walls, windows and Doors	0	35,469	649	0	36,118
05 Internal Walls and Doors	0	1,870	0	0	1,870
07 Mechanical Services	0	217,223	550	0	217,773
08 Electrical Services	0	4,863	0	0	4,863
09 Redecorations	0	12,170	61,147	0	73,317
11 External Areas	0	0	0	0	0
Total	0	285,466	137,003	0	£422,468

9.14 Ysgol Y Llys, Prestatyn

Following the work that was undertaken at this school the maintenance backlog has been reduced. There are no current DDA compliance issues at the school or the wider school site.

Diminishing Resources

- 9.15 The percentage of unfilled places in Flintshire schools is 17% which remains above the Welsh Government target of 10%.
- 9.16 An excessive number of unfilled places unproductively ties up resources. As schools funding and provision are largely driven by pupil numbers, surplus capacity means a disproportionate amount of funding is spent on infrastructure (such as buildings) and the “fixed costs” of running a school (such as leadership and administration).
- 9.17 This funding could be better used to ensure that pupil teacher ratios are maximised to make a direct difference to learners. As public service funding reduces over forthcoming years the case for reprioritisation and change becomes even more compelling.
- 9.18 All alternative schools in the local area provide appropriate building environments to support learning. Therefore, it is the view of the council that if this proposal is implemented there would be no adverse impact on any of the alternative provision in terms of building adequacy. There is sufficient capacity within the local Welsh medium school network to accommodate pupils displaced from Ysgol Gymraeg Mornant, Picton.

10. What will be the impact of the proposal on financing of Schools?

- 10.1 Not tackling school organisational issues can result in uneven and unfair funding patterns where some schools receive a disproportionate share of funding at the expense of pupils attending other schools in the area, this is mostly the case of schools that are classified as small schools. Any school proposals should contribute towards establishing a more equitable pattern of school funding.
- 10.2 In line with regulatory requirements Flintshire County Council has a schools funding formula which is the methodology by which the budget share for each school in the County is determined. Each year the formula is reviewed and in consultation with relevant stakeholders amendments are made to reflect changes in funding and policy. The detailed methodology and the budget shares are sent to all schools and a summary is published in what is referred to as the section 52 budget statement.
- 10.3 Schools receive a budget for a financial year from April to the following March and this is based on the pupils in each school in the September preceding the financial year. The 2015/16 section 52 budget statement has been used as the basis of analysis.

10.4 In 2015/16 Ysgol Gymraeg Mornant, Picton received a formula funding allocation of £240,408 which represents £4,411 per pupil, ranking the school as 5th highest funded per pupil in Flintshire, and £1,142 higher than the average funding per pupil in Flintshire. The higher level of per pupil funding reflects the need to subsidise small schools by the inclusion of lump sum amounts within then funding formula, and also reflects the higher premium costs per pupil in smaller schools.

10.5 The table below contains the per pupil funding for each of the schools affected by the proposal

School	Per Pupil Funding 2015/16	Budget Allocation 15/16 (£)
Ysgol Gymraeg Mornant, Picton	£4,411	£240,408
Ysgol Gwenffrwd, Holywell	£3,030	£657,473
Ysgol Y Llys, Prestatyn	£3,536	£1,077,000

* Note the funding formulas for Ysgol Y Llys, Prestatyn will be based on Denbighshire County Council's methodology

10.6 There are significant cost pressures facing schools such as an increase in the employers pension contribution, the introduction of the Single Tier Pension resulting in higher employer NI contributions, pay awards and general inflation. Due to austerity measures school budgets are under increasing pressure, the Schools' Budget will be uplifted by 1% in 2016/17 which in real terms means that schools will have to make efficiencies of around 2% to absorb costs pressures.

10.7 Using the 2015/16 funding model and based on pupil numbers as at September 2015 and estimated pupil numbers for September 2016 Ysgol Gymraeg Mornant, Picton would receive the following formula allocation:

Financial Year	Pupil Numbers	Estimated Formula Allocation*	Per Pupil Funding	Reduction in Budget compared with 2015/16	2% Inflationary pressure	Real Terms Reduction in budget
2016/17	46.5	£218,502	4,699	-21,905	-4,370	-26,275
2017/18	42	£204,276	£4,864	-36,131	-4,086	-40,217

*Based on 2015/16 Funding Model - Includes Part Time Nursery pupils

10.8 With reduced funding due to falling pupil numbers, a reduction in real term budgets due to inflationary pressures the financial resilience of the school is a significant concern.

10.9 Should Ysgol Gymraeg Mornant, Picton close, pupil-led funding would follow pupils to the school of their choice. As parental preference cannot be predicted at this stage for modeling purposes it is assumed that 100% of the pupils would transfer to Ysgol Gwenffrwd, Holywell. The impact on the formula allocations on Ysgol Gwenffrwd, Holywell is shown in the table below.

School	Per Pupil Funding 2015/16	Budget Allocation (£)	Increase in Funding
Ysgol Gwenffrwd, Holywell	£2,899	£786,984	£129,512

10.10 Due to the availability of alternative school places in the area there would be no requirements for capital investment in other schools as a consequence of the proposal.

10.11 Other savings which can also be achieved are reduction in the Council’s backlog maintenance of £19,402 and reduction in cyclic maintenance servicing costs for legionella, gas and electric testing (not included in the saving calculation).

10.12 There are some current transport costs totalling £34,200 per annum associated with Ysgol Gymraeg Mornant, Picton. Should the proposal be implemented 39 pupils would be entitled to free home to school transport to their nearest schools either Ysgol Gwenffrwd, Holywell or Ysgol Y Llys, Prestatyn on the grounds that the route is more than 2 miles and would be deemed to be hazardous. The estimated annual cost of home to transport provision to alternative provision would reduce the transport costs would be an estimated £26,600.

10.13 The net saving that could be achieved if the proposal to close the Ysgol Gymraeg Mornant, Picton goes ahead is as follows:-

Saving/Costs	Amount
Formula Funding Saving	£110,896
Backlog Maintenance Saving	£19,402
Transport Costs	-£26,600 (current transport costs of £34,200) Transport Saving of £7,600
Catering Saving	£6,000
Total Net Saving	£143,898

10.14 School meals to Ysgol Gymraeg Mornant, Picton are provided on a transported basis from Gronant CP School. This means that the food is prepared by Gronant CP School and then transported over to the school ready for service at lunch

times. The estimated annual catering savings should the school close would be approximately £6,000.

10.15 Flintshire County Council has a Carbon Reduction Strategy that seeks to reduce the County's Carbon emissions by 60% from 2007/08 levels by 2021. Within this strategy are four defined areas of action,

- Good housekeeping, i.e. minimise wasteful/inappropriate use of energy
- Technical upgrades - install new and more energy efficient equipment and Controls
- Asset rationalisation - the closure/mothballing of unsuitable or excess buildings
- Renewable Energy generation - invest in low carbon generation technologies.

All the above elements contribute to the important goal of reduced emissions, leading to a better environment and lower costs to the Council, particularly in relation to energy costs and various carbon taxes.

11. What will be the impact of the proposal on the land and buildings of the School?

11.1 The Council have no plans for the site at Ysgol Gymraeg Mornant, Picton, and will not consider the future of the site until such time as the school's future is determined.

11.2 Should the proposal be implemented Ysgol Gymraeg Mornant, Picton (building and site) would be declared surplus to Education and transferred to the Property Asset Team at Flintshire County Council.

11.3 As stated earlier in the document, the Council has no plans for the school site should the school close. Planning for the school will only take place once the future of the school has been determined. The Council could consider transferring the school asset or part of the asset to a constituted community group where they can demonstrate a need and ability to take over the running of the site.

12. What issues have been considered in developing the proposal?

Alternative Options

12.1 The Council has given careful consideration to a range of alternative options as part of the development of the current proposal. In considering these options reference has been made to the main investment objectives of the School Modernisation Programme which are as follows:

- continuing to raise educational standards;
- creating the conditions for school leaders to succeed;
- ensuring that school buildings are attractive learning and working environments;
- reducing the number of surplus places and the inequity of variation in cost per pupil; and
- providing resilience against falling revenue funding.

12.2 Additionally, all options have been analysed against the key drivers for the review, these are:

- Educational improvement
- Resilient School Leadership
- Suitable Buildings
- Unfilled places
- Diminishing Resources

12.3 The alternatives considered by the Council with regard to Ysgol Gymraeg Mornant, Picton are outlined below alongside associated advantages and disadvantages for each option.

Option 1 : Retain the Status Quo	
Advantages	Disadvantages
<ul style="list-style-type: none"> • Ysgol Gymraeg Mornant, Picton would remain open. 	<ul style="list-style-type: none"> • The Council would be unable to make progress towards the national 10% target for unfilled places across all school sectors. • It would not reduce the cost per pupil for the school, with this smaller school receiving subsidy from the Council in order to maintain it. • This option would not lead to a more balanced distribution of pupil-led funding. • This option would not lead to greater efficiency and effectiveness of the school estate. • The Council would still have to support building maintenance and capital improvement costs.

Option 2 : Federation	
Advantages	Disadvantages
<ul style="list-style-type: none"> • Ysgol Gymraeg Mornant, Picton would remain open • One headteacher across two or more sites, would provide a potential opportunity to strengthen leadership and management and result in at least one Headteacher salary saving. • There would be greater opportunity to share resources than the status quo and share best practice 	<ul style="list-style-type: none"> • Unfilled places would remain an issue – pupil forecasts suggest unfilled places above the national target of 10% across the Welsh Medium provision in 2017. • There would still be a requirement to finance and maintain two or more school buildings and staffing bodies • There may be increased staffing costs due to additional staff requirements as a

<p>and staff expertise would be broader.</p>	<p>consequence of revised leadership and management structures.</p> <ul style="list-style-type: none"> • Pupils would remain in mixed age cohorts in Ysgol Gymraeg Mornant, Picton – although some opportunities would be presented to undertake activities with pupils of a federated partner/s. • Would not result in any significant revenue savings for the council • This option would not lead to a more balanced distribution of pupil led funding. • This option would not lead to greater efficiency and effectiveness of the school estate. • The Council would still have to support building maintenance and capital improvement costs.
--	--

<p style="text-align: center;">Option 3 : Closure</p>	
<p style="text-align: center;">Advantages</p>	<p style="text-align: center;">Disadvantages</p>
<ul style="list-style-type: none"> • Pupils at Ysgol Gymraeg Mornant, Picton would be able to access a higher standard of education in the Welsh medium schools identified as alternative schools. • Unfilled places within the area would be reduced in line with National and Local targets. • Per pupil funding would become more evenly distributed across the area and would impact more widely across the school estate. • Resources could be implemented more efficiently and effectively to 	<ul style="list-style-type: none"> • Primary Welsh medium educational provision within the village of Gwespyr Picton would cease. • Staff may be redeployed or made redundant. • Journey times to alternative schools would increase. • Potential Impacts on friendship groups.

<p>maintain and strengthen educational improvement.</p> <ul style="list-style-type: none"> • The Cost per pupil range will be reduced in the primary sector • Reactive, cyclical and planned Building maintenance activities and costs will be reduced. • A revenue saving would be realised on staffing and leadership costs. • The Council would not have to expend capital resources to address suitability and sufficiency issues. 	<ul style="list-style-type: none"> • Potential impact on the community of Gwespyr and Picton.
--	--

13. Welsh Language, Community and Equality Impacts

13.1 The Council acknowledges that where a school closure is proposed it will have some impact on the local community. The community impact assessment can be found via the following link:

www.flintshire.gov.uk/schoolmodernisation

13.2 The impact assessment has identified a number of possible areas where the proposal could have some negative impact on a small number of local families and on the local community.

13.3 The loss of the school would impact on the small number of community activities taking place and the community facilities within Ysgol Gymraeg Mornant, Picton such as:-

- Fund raising meetings for Eisteddfod Yr Urdd 2016
- Dysgu Teulu

13.4 As stated earlier in the document, the Council has no plans for the school site should the school close. Planning for the school will only take place once the future of the school has been determined. The Council could consider transferring the school asset or part of the asset to a constituted community group where they can demonstrate a need and ability to take over the running of the site.

13.5 Detailed Equality and Welsh language impact assessments have also been completed for this proposal. The impact assessments have been completed to consider the potential impact of policy in respect of all areas of equality and Welsh language and the potential ways in which the impact can be limited and a positive impact can be promoted.

13.6 The impact assessments have identified a number of possible areas where the proposal could have some negative impact on some protected characteristic groups, and has identified ways to promote a positive impact. The equality and impact assessment can be found at the following link:-

www.flintshire.gov.uk/schoolmodernisation

Welsh Language Impact Assessment

13.7 This Impact Assessment is to consider the potential impact on the Welsh language of the proposal to close Ysgol Gymraeg Mornant, Picton.

13.8 In order to assess the potential impact on the Welsh language, consideration has been given to the following areas:

- Language of the school;
- Access to Welsh Medium education;
- Education Provision/Education Standards;
- Access to non-statutory provision;
- Access to pre/after school activities;
- Use of Welsh within the community

The following data is taken from the 2011 census and provides information regarding the Welsh language skills of residents in the Fynnongroyw area in which the school is located. The estimated population of the ward area in 2011 was 1,757 and the results for Welsh language skills are as follows:

- 22.9% of residents (aged 3 or over) are Welsh speakers. This is higher than the Flintshire average of 13.2% and higher than the Wales average of 19.0%.
- 16.1% of residents (aged 3 or over) can speak, read and write Welsh. This is higher than the Flintshire average of 9.3% and higher than the Wales average of 14.6%.

(Source: Office for National Statistics & Infobase Cymru)

Ysgol Gymraeg Mornant, Picton is defined as a Category 4 Welsh medium primary school with Welsh as the main teaching medium and the everyday language of the school.

13.9 The latest Pupil Level Annual School Census (PLASC) data from January 2015 identifies the following information about the use of the Welsh language by pupils and families at Ysgol Gymraeg Mornant, Picton –

Percentage of pupils that:

Speaks Welsh at home – 6.25 %

Does not speak Welsh at home – 91.66 %

Not applicable (cannot speak Welsh) – 2.08 %

13.10 The two nearest Category Welsh medium primary schools to Ysgol Gymraeg Mornant, Picton are Ysgol Gwenffrwd in Holywell, Flintshire (6.69 miles away from Ysgol Gymraeg Mornant, Picton) and Ysgol y Llys in Prestatyn, Denbighshire (4.37 miles away from Ysgol Gymraeg Mornant, Picton).

13.11 The transfer history of pupils from Ysgol Gymraeg Mornant, Picton is varied – most transfer to Welsh medium secondary schools e.g. Ysgol Maes Garmon, Flintshire and Ysgol Glan Clwyd, St Asaph, Denbighshire. A small number transfer to English medium secondary schools. Pupils from Ysgol Gwenffrwd, the nearest Flintshire Welsh medium alternative primary school, who transfer to Welsh medium secondary school attend either Ysgol Maes Garmon or Ysgol Glan Clwyd, St Asaph, Denbighshire. A small number transfer to English medium secondary schools.

13.12 Nearly all pupils from Ysgol y Llys, the nearest alternative Welsh medium primary school to Ysgol Gymraeg Mornant in Denbighshire who transfer to Welsh medium secondary school attend Ysgol Glan Clwyd, St Asaph, Denbighshire.

13.13 A comparison of standards in the Welsh language at Ysgol Gymraeg Mornant and its nearest alternative Welsh medium primary schools - Ysgol Gwenffrwd and Ysgol y Llys, Prestatyn – are included below. The expected level for 7 year olds is Foundation Phase Outcome 5 or better. The expected level for 11 year olds is National Curriculum Level 4 or better

<i>Ysgol Gymraeg Mornant</i>	2012	2013	2014
Language, Literacy & Communication Welsh (7 yr olds)	44.4%	50.0%	50.0%
Family Average	76.6%	81.4%	87.5%
LA Average	84.1%	84.4%	87.3%
Wales Average	85.9%	86.7%	89.8%
Welsh 1st Language (11yr olds)	88.9%	87.5%	87.8%
Family average	77.3%	77.9%	82.5%
LA Average	78.9%	90.1%	90.0%
Wales Average	84.0%	86.7%	88.1%

<i>Ysgol Gwenffrwd</i>	2012	2013	2014
Language, Literacy & Communication Welsh (7 yr olds)	76.9%	78.4%	84.6%
Family Average	81.6%	84.7%	91.9%
LA Average	78.9%	90.1%	90.0%
Wales Average	85.9%	86.7%	89.8%
Welsh 1st Language (11yr olds)	88.2%	88.2%	95.0%
Family average	86.2%	87.0%	90.0%
LA Average	78.9%	90.1%	90.0%
Wales Average	84.0%	86.7%	88.1%

<i>Ysgol Y Lllys</i>	2012	2013	2014
Language, Literacy & Communication Welsh (7 yr olds)	95.1%	94.9%	89.5%
Family Average	86.4%	84.1%	90.6%
LA Average	88.4%	89.9%	89.3%
Wales Average	85.9%	86.7%	89.8%
Welsh 1st Language (11yr olds)	83.8%	86.2%	86.7%
Family average	86.7%	87.3%	89.4%
LA Average	90.0%	88.0%	85.1%
Wales Average	84.0%	86.7%	88.1%

Source: Mylocalschoolswales.gov.uk

13.4 In the Welsh in Education Strategic Plan, Flintshire County Council endeavours to increase the number of fluent Welsh speakers within its boundaries, with the aim of creating an increasingly bilingual county and country.

Flintshire County Council is committed to supporting, expanding and promoting Welsh-medium education within the whole community, increasing the number and percentage of pupils receiving Welsh-medium education in compliance with the Welsh Government's Welsh-Medium Education Strategy of developing learners who are fully bilingual (i.e. fluent in both English and Welsh) and where there is demand.

Flintshire County Council, working in partnership with schools, stakeholders and other providers will: -

- provide parents with full information and understanding of the advantages of Welsh-medium education and the opportunities which exist within Flintshire;
- work with stakeholders to increase significantly the number of pupils who receive their education through the medium of Welsh in the current designated Welsh-medium schools in the County;
- work with schools to develop the CPD programme among the education workforce which will increase the number of potential practitioners within the Welsh-medium sector;
- work with schools to raise standards, as required by the National Literacy Programme and the School Effectiveness Framework
 - in the Welsh-medium sector (Welsh First Language and subjects taught through the medium of Welsh across the curriculum)
 - in the English-medium sector (where Welsh is taught and promoted as a second language).

13.5 In compliance with the statutory regulations in relation to Welsh in Education Strategic Plans, the Local Authority will undertake a survey to assess the demand for Welsh medium education every three years in order to plan for appropriate levels of provision.

13.6 The surveys of 2009 and 2013 confirmed that the greatest demand for Welsh medium education in Flintshire is currently in the Deeside area and Buckley/Mynydd Isa area. The Local Authority has responded to this demand by extending the provision of Ysgol Croes Atti (Flint) onto an additional site in Shotton and this opened in September 2014. The numbers of pupils attending the new school site are rising.

13.7 The needs of the Welsh medium education sector area always considered as part of the bidding process for funding from Welsh Government for 21st Century Schools funding.

Welsh Language Impact Assessment – Proposal to Close Ysgol Gymraeg Mornant

Impact Judgements: Positive/Negative/Neutral

Pupils’ use of Welsh Language	Option 1 - Status Quo	Option 2 - Federation With another WM school	Option 3 - Closure	Comments/Future mitigation of negative impacts
Access to Welsh Medium Education and being assessed through the medium of Welsh at age 7 and 11.	Neutral	Neutral	Neutral or Negative	If parents are committed to their children continuing to receive a Welsh medium education and send them to other Welsh medium schools in the area then the impact of closure will be neutral. The risk is that if Ysgol Gymraeg Mornant, Picton closes then parents and pupils might not choose to travel to a Welsh medium school that is further away and may elect to attend an English medium school which is nearer to their home, then the impact on the numbers of pupils being assessed through the medium of Welsh might be negative.
Educational Provision & Standards	Neutral	Positive	Positive	In the event of the closure of Ysgol Gymraeg Mornant, educational provision, standards and ‘Capacity to Improve’ are currently higher at

				<p>the nearest Welsh medium schools in both Flintshire (Ysgol Gwenffrwd) and Denbighshire (Ysgol y Llys) for which parents could express a preference in the event of closure than at Ysgol Gymraeg Mornant, Picton. This is based on Estyn judgements and the National Categorisation model.</p> <p><u>Estyn categorisation</u> Ysgol Gymraeg Mornant – Estyn Monitoring Ysgol Gwenffrwd – No follow up Ysgol y Llys – No follow up</p> <p><u>National Categorisation Model</u> Ysgol Gymraeg Mornant : Standards Group 4 Capacity to Improve – B Support Category - Amber Ysgol Gwenffrwd Standards Group 3 Capacity to Improve – A Support Category - Yellow Ysgol y LLys Standards Group 3 Capacity to Improve – B Support Category - Yellow</p>
--	--	--	--	--

				(Source: mylocalschool.wales.gov.u k & Estyn website www.estyn.gov.uk)
Pupils' use of language in:				
- The playground	Neutral	Neutral	Neutral/Negative *	*Depends on parental choice of new school if Ysgol Gymraeg Mornant closes – continue with Welsh Medium Impact is neutral. Move to English Medium, impact would be negative.
- Breakfast Club	Neutral	Neutral	Neutral/Negative *	
- After School Club	Neutral	Neutral	Neutral/Negative *	
Staff ability to teach through the medium of Welsh	Neutral	Neutral	Neutral	All staff in Ysgol Gymraeg Mornant, Ysgol Gwenffrwd and Ysgol y Llys are able to teach through the medium of Welsh.
Access to after school activities which provide opportunities for pupils to use Welsh eg Urdd club/residential visits	Neutral	Neutral	Neutral	All three schools offer a variety of experiences for children to develop and enjoy their use of the Welsh language including school run clubs and involvement in the Urdd and other community activities.
Access for parents/carers & the wider community to participate in activities to learn Welsh offered by the school	Neutral	Neutral	Neutral/ Negative	The Headteacher at Ysgol Gymraeg Mornant, Picton has indicated that there is a 'Dysgu Teulu' session which runs on a weekly basis. Ysgol Gwenffrwd, Holywell does not provide specific signposting to activities for parents/carers and the wider community to

				<p>participate in activities to learn Welsh.</p> <p>Ysgol y Llys signposts parents to suitable Welsh classes in the community.</p>
<p>Access to pre-school/early years provision through medium of Welsh</p>	Neutral	Neutral	Neutral/Negative *	<p>Both Ysgol Gymraeg Mornant, Picton and Ysgol Gwenffrwd offer pre-school provision through the medium of Welsh.</p> <p>Cylch Meithrin Mornant offers part time funded educational places for three year olds (Early Entitlement), a parent & toddler group (Ti a Fi) and wrap around care for Nursery pupils (Meithrin Mwy).</p> <p>Cylch Meithrin Rhagoral offers part time funded places for three year olds (Early Entitlement), and a parent & toddler group.</p> <p>Cylch Chwarae Treffynnon offers part time funded places for three year olds (Early Entitlement), and a parent & toddler group.</p> <p>*Depends on parental choice if Ysgol Gymraeg Mornant, Picton closes – continue with Welsh Medium</p>

				Impact is neutral. Move to English Medium, impact would be negative.
Language most commonly used by the Governing Body for meetings and communication	Neutral	Neutral	Neutral	Governors meetings in Ysgol Gymraeg Mornant, Picton are conducted in English Parent/Teacher Association Meetings are conducted in English.
Language most commonly used in the activities/meetings of the Parent/Teacher Association	Neutral	Neutral	Neutral	Meetings of the Parent/Teacher Association in Ysgol Gymraeg Mornant, Picton are conducted in English.

14. Impact of the Proposal on Teachers, Support Staff and Governing Body

- 14.1 Should the proposal be implemented this will result in change for the staffing body. Should the proposal be implemented the Council’s Human Resources Business Partner team would provide advice and guidance to governing body and members of teaching and support staff with respect to the redundancy process and associated activities.
- 14.2 As part of the formal consultation process the appropriate teaching and support staff trade unions will be consulted. A named representative from Flintshire County Council’s Human Resources team will be allocated to undertake consultation meetings.
- 14.3 Should the proposal be implemented, the Council will work with the current members of staff at Ysgol Gymraeg Mornant, Picton, including teaching and support staff, should they wish to seek redeployment or retirement opportunities.
- 14.4 The governing body of the school will apply its own organisational change and redundancy policy when it is required and appropriate support to teaching and support staff will be provided during this time through the Schools Leadership Team and the Council.

- 14.5 Staff displaced by the proposal may have the opportunity to be employed in the local schools network
- 14.6 It is not expected that there will be any significant staffing changes in the alternative schools named within this document as a result of the proposal.
- 14.7 Should this proposal be implemented the Governing body of Ysgol Gymraeg Mornant, Picton would cease on the proposed date of closure.

15. Impact of the Proposal on Pupils

- 15.1 When proposing changes to school organisation it is acknowledged that there will be some changes for pupils. Should the proposal be implemented and Ysgol Gymraeg Mornant, Picton be closed it would result in changes for the existing pupils such as:
- For the majority of pupils a longer travel time to a new school
 - A new school uniform
 - New teachers
 - New learning environment
 - Friendship groups could be affected
- 15.2 The Council would take all practicable steps to ease the transition for all pupils, most especially for vulnerable groups of learners such as Additional Learning Needs (ALN). Should the proposal be implemented the Council would arrange transition days for pupils for familiarise themselves with their new environments (subject to parental preference).
- 15.3 Where pupils have specific ALN needs the resource and support they require would be replicated in their new learning environments. This is detailed in the following section.

16. Additional Learning Needs (ALN) and Groups of Vulnerable Learners

- 16.1 If the current proposal is implemented, it would result in a change in the learning environment for all pupils. It is acknowledged by the Council that although the change will be experienced by all pupils, it may prove more challenging for pupils with additional learning needs. The Council will take all practicable steps to minimise disruption to all pupils with specific consideration given to pupils with additional learning needs.
- 16.2 All schools in Wales are required to pay due regard to the Welsh Government documents The Special Educational Needs Code of Practice for Wales (2002) and the Inclusion and Pupil Support, Circular No.: 47/2006. These documents categorise groups of pupils who may be deemed to have additional learning needs.

They specify the need for schools to have processes in place to support identification and place a requirement on schools to make appropriate provision in response to this. Any alternative school identified for pupils with additional learning needs as a result of this proposal would need to take into account the pupils needs and offer appropriate support in response to these.

- 16.3 Where a pupil has significant additional learning needs and has been issued with a Statement of Special Educational Need, they will continue to have access to the additional resources identified within the Statement in the new school. For some pupils a Service Level Agreement (SLA) may be in place providing individual intervention from central services, or financial resources for the school to provide fulltime support. Where this is the case, the resources/provision will also transfer to the new school. For pupils with an SLA or Statement, the named officer would offer support to parents/carers and pupils during the period of transition.
- 16.4 Careful planning will take place where pupils have needs that require adaptations to the new physical environment to make it accessible. Flintshire County Council is aware of the duties placed on it by the Equality Act 2010 and works within the confines of the Act to secure accessible school buildings for its pupils. Officers will therefore work closely with parents/carers and other relevant professionals to secure a smooth transition into the new environment where adaptations are required. For some pupils, suitable facilities may already exist and each pupil will be considered on an individual basis, taking into consideration parental preference.
- 16.5 Schools have reported the categories of educational needs for their full time pupils in the January 2015 PLASC. The educational needs categories for Ysgol Gymraeg Mornant, Picton and the alternative schools, are displayed below.

In some instances the data set is incomplete and shown as (*) as this may lead to identification of individual pupils due to low numbers within the related cohort.

School Name	School Action	School Action Plus	Statemented
Ysgol Gymraeg Mornant, Picton	*	*	*
Ysgol Gwenffrwd, Holywell	57	29	*
Ysgol Y Llys, Prestatyn	27	19	0

- 16.6 Provision for ALN is subject to external verification by the Estyn Inspection process. The following comments have been made in relation to Ysgol Gymraeg Mornant, Picton and also each of the relevant schools:

Ysgol Gymraeg Mornant, Picton Estyn Inspection Date: October 2014

'Provision for additional learning needs enables nearly all pupils to make good progress and to have access to the full curriculum. By using a good range of assessment methods, the school identifies pupils' additional learning needs at an early stage and arranges specific support and intervention programmes for them. This leads to suitable progress in pupils' standards and learning. Individual education plans are of an appropriate quality and, in consultation with parents, are reviewed regularly. In specific cases, the school takes advantage of the co-operation of external agencies, along with the local authority's support services.'

Ysgol Gwenffrwd, Holywell Estyn Inspection Date: January 2011

Pupils with additional learning needs (ALN) are making good progress in relation to their ability. There is no significant pattern highlighted in the performance of boys and girls. The school is staffed appropriately and makes effective use of the time, expertise and experience of members of staff. Good use is made of teaching assistants throughout the school, including in the Foundation Phase, and in supporting pupils with ALN.

'The percentage of pupils with additional learning needs is 33.2%, which is higher than the national average of 21.6%'

Ysgol Y Llys, Prestatyn Estyn Inspection Date: December 2012

'Provision for pupils with additional learning needs is excellent and enables them to make very good progress. The school co-ordinates its wide range of provision excellently. Teachers identify any additional learning needs at an early stage and monitor pupils' progress regularly and very effectively. Staff and the co-ordinator ensure that individual education plans are detailed and thorough and include parents' opinion. The way in which the school arranges training for members of staff and the provision that arises from it is excellent.'

- 16.7 For the last academic year the Free School Meal percentage for Ysgol Gymraeg Mornant, Picton was 22.91%. This is above the national average for Free School Meal percentage at 17.1%. It is the Councils view that the proposal will not have a disproportionate impact on pupils from an economically deprived background.

17. Transport Arrangements

- 17.1 The current transport arrangements for Ysgol Gymraeg Mornant, Picton are as follows:

Contract 1 (Bus service) = £100 per day

Contract 2 = £35 per day

Contract 3 = £45 per day

Current transport costs = £180.00 per day

Total annual transport costs = £180.00 x 190 school days = £34,200.00

17.2 The Council will provide transport in accordance with the Transport Policy.

<http://www.flintshire.gov.uk/en/PDFFiles/Lifelong-Learning/Schools/School-Transport/Transport-Eligibility-Criteria-.pdf>

For a small number of pupils at Ysgol Gymraeg Mornant, Picton reside in the county of Denbighshire, transport eligibility assessment would be managed by Denbighshire County Council. A copy of the consultation document will be sent to Denbighshire County Council for information. Denbighshire's Home to transport policy can be found at the following link:

<https://www.denbighshire.gov.uk/en/resident/education/grants-and-funding/free-school-transport.aspx>

17.3 In Summary the Council provide free transport for children of compulsory school age, where a child receiving primary education lives over two miles from the nearest appropriate school.

The Council also provides free transport for pupils of statutory school age:-

- where the route to school is considered to be hazardous by the Local Authority;
- where transport to a named school is identified in a pupil's Statement of Special Educational Needs. This would normally be on medical or educational grounds and would be deemed essential in the context of other criteria identified in this policy
- where a child requires transport on medical grounds and no suitable public transport exists;

Free transport is also provided for pupils of statutory school age:

- where a child whose parents are in receipt of Income Support or Working Tax Credit resides more than 2.5 miles from the nearest appropriate school;
- to the nearest Welsh medium school under the criteria identified above;
- to the nearest voluntary aided school where the admission to the school is on denominational grounds, subject to the distance criteria. Consultation with individual schools will take place to confirm the admission criteria under which

pupils are admitted. Suitable evidence of adherence to the faith of the school such as a baptismal certificate or a letter from a priest may be requested.

- 17.4 For most pupils at Ysgol Gymraeg Mornant, Picton would have an increased distance from their home to the alternative schools and could not utilise walking routes within the village due to its rural location.
- 17.5 For most pupils the distance travelled would increase, however this would not be in excess of the learner travel (Wales) Measure 2008.
- 17.6 Detailed mapping and transport information for Ysgol Gymraeg Mornant, Picton pupils and alternative schools can be viewed in the transport impact assessment at the following link:-

www.flintshire.gov.uk/schoolmodernisation

18. Admission Arrangements

- 18.1 Should the current proposal be implemented admission arrangements for alternative schools will be dealt with in line with Flintshire County Council's School Admissions Policy. This policy can be found on the website via the following link:-

<http://www.flintshire.gov.uk/schooladmissions>

Flintshire County Council is the admissions authority for Ysgol Gwenffrwd, Holywell and Denbighshire County Council is the admissions authority for Ysgol Y Lllys, Prestatyn. Should the proposal be implemented, parents/carers would be required to apply for a school place at an alternative school.

- 18.2 Flintshire County Council's admissions team will liaise with parents should the proposal be implemented to support a stable transition for pupils who are transferring to an alternative school. The Flintshire County Council's admissions service would write to individual parents to outline the options available to them and assist parents/carers to identify suitable alternative provision taking into consideration individual pupil needs.
- 18.3 Parents/carers can complete an online form for admissions to any school at the following link:-

<http://www.flintshire.gov.uk/schooladmissions>

Parents/carers can complete an online form for admissions to Denbighshire based schools from the Denbighshire school admissions department at the following link:-

<https://www.denbighshire.gov.uk/en/resident/education/school-admissions.aspx>

18.4 The Council's school admissions policy is based on the principle of attendance at the nearest suitable school, based on distance. The Council does not operate a system based on catchment areas. Schools are referred to as the 'nearest suitable school' which takes into account language and faith preference. Parents/carers may express a preference for any school for their child/children and as long as there are available spaces a place must be allocated.

19. Impact of the Proposal on Secondary Provision

19.1 The proposal will not have a significant impact on secondary provision within the area. The pupils of Ysgol Gymraeg Mornant, Picton transfer to Ysgol Maes Garmon, Mold or Ysgol Glan Clwyd, St Asaph, Denbighshire. If the pupils of Ysgol Gymraeg Mornant, Picton choose their next nearest Welsh Medium Primary School this would not have a negative impact on Ysgol Maes Garmon, Mold, or Ysgol Glan Clwyd, St Asaph, Denbighshire

20. How will the consultation take place?

20.1 This consultation will take place between Wednesday 11th November 2015 and Wednesday 23rd December 2015. The consultation is required to take place for at least 42 days with at least 20 of these days being school days.

20.2 As part of the consultation, Flintshire County Council has produced this consultation document containing certain information set out in the Welsh Government Guidance. The consultation document follows that guidance and sets out the information people will need to fully participate in the consultation process. Hard copies are available on request by contacting the School Modernisation Team, 01352 704134 or 01352 704015 or email 21stcenturyschools@flintshire.gov.uk.

20.3 This formal consultation document has been sent to a wide range of stakeholders, including:

- The Governing Body of Ysgol Gymraeg Mornant, Picton
- Pupils, Parents, carers, guardians, support staff and teachers of Ysgol Gymraeg Mornant, Picton
- Other Governing Bodies, Headteachers, parents, carers, guardians and School Councils of neighbouring primary schools
- Cylch Meithrin Mornant (perspective parents)
- Llanasa Community Council
- Prestatyn Town Council
- Ysgol Maes Garmon, Mold
- Ysgol Glan Clywd
- Assembly Members for Flintshire County Council and regional Assembly Members for the area
- Flintshire Transportation Officer and neighbouring LA Transport Officers
- Police and Crime Commissioner

- Members of Parliament
- Assembly Members
- Estyn
- Teaching and staff trade unions
- Gwasanaeth Effeithiolrwydd Ysgolion (GwE)
- Denbighshire County Council
- Conwy County Borough Council
- Wrexham County Borough Council
- Gwespyr Picton Community Council
- Ffynnongrow Community Council
- Holywell Town Council
- The local Communities First Partnership
- Betsi Cadwaladr Health Board
- Urdd
- Church in Wales and Roman Catholic Diocesan Authorities
- Welsh Minister for Education and Skills
- Flintshire Children and Young People's Partnership and the Early Years Development and Childcare Partnerships;
- Flintshire County Council Councillors who represent the Gwespyr Picton and surrounding area.
- MP for Denbighshire County Council

20.4 This document has been published on the Flintshire County Council website and can be found by following this link:

www.flintshire.gov.uk/schoolmodernisation

20.5 A supplementary version of this consultation document has been produced for children and young people who are likely to be affected by the proposal. This document will be made available at the schools named within this proposal. The document is also available on Flintshire County Council's website using the link provided above. The children and young people's document has been specifically written and presented to enable children and young people to understand and engage with the consultation process. Hard copies are available on request by contacting the School Modernisation Team, 01352 704134 or 01352 704015 or email 21stcenturyschools@flintshire.gov.uk.

20.6 Other relevant supporting documentation, such as the Community and Equality Impact Assessments can also be found on the Flintshire County Council website using the link provided above.

20.7 Within 13 weeks of the end of the period of consultation a formal consultation report must be published. The formal consultation report must contain the following:

- A summary of each of the issues raised by consultees;
- A response to each of the issues raised by consultees by means of clarification together with supporting reasons;

- Estyn’s view in full (as it is provided in its consultation response) of the overall merits of the proposal; and
 - Any proposer must ensure that any views expressed by children and young people affected by the proposals are highlighted within the consultation report and that it is accessible to them.
- 20.8 Responses provided at the consultation stage are not counted as formal objections.
- 20.9 The formal consultation report will be considered by Cabinet who will decide whether to proceed with the proposal. Should Cabinet decide to proceed the proposal must then be published by way of a Statutory Notice.
- 20.10 The statutory objection period lasts for 28 days (of which 15 days must be school days). To be considered as a statutory objection, objections must be made in writing or by email and sent to the proposer (Flintshire County Council).
- 20.11 Following the statutory objection period a summary of the statutory objections and the proposer’s response to the objections must be published. The Objection Report must be published before the end of 7 days beginning with the day of the proposal’s determination.
- 21.12 Please note that responses submitted as part of the formal consultation period will not be counted as objections to the proposal. Statutory objections can only be made if a Statutory Notice is published. If a Statutory Notice is published objections can then be registered. Consultees may submit a request during the statutory objection period that their response submitted at the consultation stage should be treated as an objection.
- 20.13 Flintshire County Council has 16 weeks from the end of the objection period to decide whether or not to implement the proposal. This is known as ‘determining the proposal’.
- 20.14 Flintshire County Council will make and issue its decision in relation to the proposal in writing setting out the reasons for the decision. The decision will be published on Flintshire County Council’s website.
- 20.15 Under section 54 of the 2013 Act the following bodies may within 28 days refer the proposal to the Welsh Ministers for consideration;
- Another local authority affected by the proposal;
 - The appropriate religious body for any school affected;
 - The governing body of a voluntary or foundation school subject to the proposals;
 - A trust holding property on behalf of a voluntary or foundation school subject to the proposals; and

- A further education institution affected by the proposals

20.16 The bodies making the referral will need to set out why they believe that the decision reached by the local authority is wrong.

20.17 There is a number of ways in which you can make your views known to us or ask any questions that you have regarding the proposal. Details are included below on how you can submit responses in a number of ways:

By Post

School Modernisation Team, Flintshire County Council, County Hall, Mold, Flintshire, CH7 6ND

By email

21stcenturyschools@flintshire.gov.uk

Online

<https://www.surveymonkey.com/r/WGD29PJ>

20.18 A response form is also attached in hardcopy at the end of this document. This can be returned either by post or email to the above addresses. Additionally you can complete the response form electronically using the following link:

<https://www.surveymonkey.com/r/WGD29PJ>

20.19 A consultation event will be offered for children and young people with members of the School Council at Ysgol Gymraeg Mornant, Picton. This will be facilitated by an officer from Flintshire County Council whose roles includes engagement and consultation specifically tailored for children and young people. Children and young people also have the opportunity to respond to the consultation using the children and young people's version of the consultation document. Children and Young People at the schools affected will have the opportunity to express their views to the proposal.

20.20 A consultation event will be offered for parents/carers of Ysgol Gymraeg Mornant, Picton. This will be facilitated by Officers from Flintshire County Council. Parents/Carers will have the opportunity to discuss the proposal with Officers.

20.21 A consultation event will be offered for Teachers/Support Staff and the Governing Body of Ysgol Gymraeg Mornant, Picton. This will be facilitated by Officers from Flintshire County Council. Teachers/Support Staff and the Governing Body of

Ysgol Gymraeg Mornant, Picton will have the opportunity to discuss the proposal with Officers.

- 20.22 At the close of the formal consultation process all view received will be collated and summarised within a formal consultation report alongside responses and clarification of issues by the local authority. This report will be presented to Cabinet for consideration.
- 20.23 All views are submitted to the above addresses by Wednesday 23rd December 2015. Responses/views/comments on the proposal sent to third parties may not be included within the analysis although every effort will be made to capture these views. Any late submissions may not be included within analysis that will be presented as part of the formal consultation report.

Consultation Response Form

(Please note that a consultation response will not be counted as a formal objection)

The consultation for Ysgol Gymraeg Mornant, Picton in accordance with the Welsh Government's School Organisation Code (July 2013) will commence Wednesday 11th November 2015 and close on Wednesday 23rd December 2015..

Proposal is to close Ysgol Gymraeg Mornant, Picton (Welsh Medium, Community School) as of 31st of August 2016 with pupils transferring to other Welsh medium schools in the local area subject to parental preference

Before you begin – if you would like to fill this form in on-line please go to:

<https://www.surveymonkey.com/r/WGD29PJ>

Based on the information you have been given in this booklet, at the consultation event and from other documents available on Flintshire County Council's website, please tell us your views on the Council's preferred option in the Gwespyr/Picton area.

1. Do you agree with the proposal to close Ysgol Gymraeg Mornant, Picton (by 31 August 2016)?

Yes No

2. Please tell us if you are responding as:

- A pupil of Ysgol Gymraeg Mornant, Picton
- A parent/carer of a pupil at Ysgol Gymraeg Mornant, Picton
- A Governor of Ysgol Gymraeg Mornant, Picton
- A Teacher of Ysgol Gymraeg Mornant, Picton
- A member of Support Staff of Ysgol Gymraeg Mornant, Picton
- Local Resident
- Other (Please specify)

3. Please let us know if you have any alternative suggestions for sustaining education in the Gwespyr/Picton area?

4. Please let us have your additional comments or views regarding the proposal. Please tell us why you feel this way.

5. Would you like us to acknowledge receipt of your response?

Yes No

6. Would you like to receive an email link to the formal consultation report when it is published on the Flintshire County Council website?

Yes No

7. If you have answered yes to either of the above questions please provide an email address. If you do not provide an email address we cannot keep you up to date

8. How we use your personal information

Under the terms of the Data Protection Act 1988 we must inform you of the following:

Flintshire County Council is seeking your views to help inform the decision on the current proposal. The information you have provided will be used only for this purpose, and may be shared with other internal agencies who are involved in the Consultation, however only to inform decision makers of your views and to address any issues you raise. If you do not wish to provide personal details your view will still be considered, but we will not be able to acknowledge receipt of your response personally.

Flintshire County Council is the data controller for the purpose of the Data Protection Act 1998. Your personal information will be processed in accordance with that Act and is being collected for the purpose stated above only, and will not be shared with any other party.

In order to monitor the inclusiveness of our engagement, we would appreciate your co-operation in providing, on an entirely voluntary basis, the information as requested below. The information is confidential and anonymous, and will be used solely for statistical monitoring purposes. It will be securely destroyed after we have captured the information.

Age: Please provide your date of birth (DD/MM/YYYY): / /

Prefer not to say

Sex: Male Other

Female Prefer Not To Say

National identity: How would you describe your national identity?

Welsh British

English Irish

Scottish Other (please describe)

Northern Irish Prefer Not To Say

Ethnic Group: What is your ethnic group? Choose one option that best describes your ethnic group or background.

White		Black/Black British		Asian/Asian British	
British <input type="checkbox"/>		Caribbean <input type="checkbox"/>		Indian <input type="checkbox"/>	
English <input type="checkbox"/>		African <input type="checkbox"/>		Bangladeshi <input type="checkbox"/>	
Northern Irish <input type="checkbox"/>		Any other Black <input type="checkbox"/>		Pakistani <input type="checkbox"/>	
Scottish <input type="checkbox"/>		Background		Chinese <input type="checkbox"/>	
Welsh <input type="checkbox"/>				Asian other <input type="checkbox"/>	
Irish <input type="checkbox"/>					
Gypsy or Irish Traveller <input type="checkbox"/>					
Other <input type="checkbox"/>					
Mixed/Mixed British				Other / Other British	
White / Black Caribbean <input type="checkbox"/>				Arab <input type="checkbox"/>	
White / Black African <input type="checkbox"/>				Other (state if required) <input type="checkbox"/>	
White / Asian <input type="checkbox"/>		Any other Mixed background <input type="checkbox"/>		Prefer not to say <input type="checkbox"/>	

Sexual Orientation:	Which of the following options best describes how you think of yourself?		
	Heterosexual/Straight	<input type="checkbox"/>	Bisexual <input type="checkbox"/>
	Gay Man	<input type="checkbox"/>	Other (state if desired) <input type="checkbox"/>
	Gay Woman/Lesbian	<input type="checkbox"/>	Prefer not to say <input type="checkbox"/>

Note: This question should only be asked of people age over 16.

Religion or Belief:	What is your religion?		
	Christian (all denominations)	<input type="checkbox"/>	No religion <input type="checkbox"/>
	Buddhist <input type="checkbox"/>	Muslim <input type="checkbox"/>	Jewish <input type="checkbox"/>
	Hindu <input type="checkbox"/>	Sikh <input type="checkbox"/>	Atheist <input type="checkbox"/>
			Other (State) <input type="checkbox"/>
			Prefer not to say <input type="checkbox"/>

Marital Status:		
Are you married or in a same-sex civil partnership?	Yes	<input type="checkbox"/>
	No	<input type="checkbox"/>
	Prefer not to say	<input type="checkbox"/>

Disability:	Section 6(1) of the Equality Act 2010 states that a person has a disability if:	
	(a) That person has a physical or mental impairment, and	
	(b) The impairment has a substantial and long-term adverse effect on that person's ability to carry out normal day-to-day activities.	
Using this definition do you consider yourself to be disabled?	Yes	<input type="checkbox"/>
	No	<input type="checkbox"/>
	Prefer not to say	<input type="checkbox"/>

Language:	What is your preferred language?
	English <input type="checkbox"/>
	Welsh <input type="checkbox"/>
	Other (including British Sign Language) <input type="checkbox"/>
	Prefer not to say <input type="checkbox"/>

Caring Responsibilities:	Do you look after or give help or support to family members, friends, neighbours or others because of either:	
• Long term physical or mental ill-health/disability; or	Yes	<input type="checkbox"/>
	No	<input type="checkbox"/>

- Problems related to old age

Prefer not to say