

Bus Timetable Amserlen Bws

2017
From May
O Mai



Welcome to the free bus timetable guide book for Flintshire. This publication is produced by Flintshire County Council and includes timetables for all bus routes operating in and passing through Flintshire.

Croeso i'r arweiniad i amserlen bysiau Sir y Fflint, sydd ar gael am ddim. Cyhoeddiad gan Gyngor Sir y Fflint yw hwn ac mae'n cynnwys amserlenni'r holl wasanaethau bws sy'n gweithredu yn Sir y Fflint neu sy'n teithio drwyddi.

Contents	Page Number	Cynnwys	Rhif Tudalen
Bus Timetable Enquiries	3	Ymholiadau Amserlen Bws	3
Using Bus Services	4	Defnyddio gwasanaethau bws	4
Ticketing	91 - 93	Cyfnewid Tocynnau	91 - 93
Lost Property	94	Eiddo coll	94
Complaints and Comments	94 - 95	Cwynion a sylwadau	94 - 95
General Information	2 - 4, 86 - 90	Gwybodaeth gyffredinol	2 - 4, 86 - 90

How to use this guide

To find the timetable page you want, you will need to know the route number of the service you wish to use.

If you do not know the route number, you can either look up your destination in the index to places on pages 5 - 8 or by using the route maps on pages 96 - 100. The route maps show the bus routes nearest to you or nearest to where you wish to travel. When you have found the route numbers you require, you can look up the timetables by referring to the List of Services on pages 9 - 10.

Sut i ddefnyddio'r arweiniad hwn

I gael hyd i dudalen benodol yn yr amserlen, bydd angen i chi wybod rhif llwybr y gwasanaeth rydych chi am ei ddefnyddio.

Os nad ydych yn gwybod rhif y llwybr, chwiliwch yn y mynegai ar dudalennau 5 - 8 am enw'r lle rydych yn teithio iddo neu defnyddiwch y mapiau o'r llwybrau ar dudalennau 96 - 100. Mae map o'r llwybrau yn dangos y llwybrau bws agosaf atoch chi neu agosaf at y lle rydych am deithio iddo. Ar ôl cael hyd i rif y llwybr bws sydd ei angen arnoch, gallwch chwilio drwy'r amserlenni drwy gyfeirio at y Rhestr o Wasanaethau ar dudalennau 9 - 10.

24 Hour Clock Format

To avoid confusion between “am” and “pm” times, Flintshire’s bus timetables are in the internationally recognised 24 hour clock format. Times after midday are as follows:

1300 = 1 pm	1700 = 5 pm	2100 = 9 pm
1400 = 2 pm	1800 = 6 pm	2200 = 10 pm
1500 = 3 pm	1900 = 7 pm	2300 = 11 pm
1600 = 4 pm	2000 = 8 pm	

Fformat cloc 24 awr

I osgoi unrhyw ddryswch rhwng amseroedd “am” a “pm,” rydym wedi defnyddio fformat y cloc 24 awr, sy'n cael ei gydnabod yn rhyngwladol. Dyma'r amseroedd ar ôl hanner dydd:

1300 = 1 pm	1700 = 5 pm	2100 = 9 pm
1400 = 2 pm	1800 = 6 pm	2200 = 10 pm
1500 = 3 pm	1900 = 7 pm	2300 = 11 pm
1600 = 4 pm	2000 = 8 pm	

Timetable Enquiries

Traveline Cymru	0800 464 0000
National Express	08717 818178
National Rail Enquiries	03457 484950

Ymholiadau am yr amserlenni

Traveline Cymru	0800 464 0000
National Express	08717 818178
National Rail Enquiries	03457 484950

Disclaimer

The services and times listed in this guide can be subject to change at short notice. Flintshire County Council will not be held responsible for any loss, damage or inconvenience as a result of any inaccuracy.

Ymwadiad

Gall y gwasanaethau a'r amseroedd sydd wedi'u rhestru yn y llyfryn hwn newid ar fyr rybudd. Ni fydd Cyngor Sir y Fflint yn derbyn unrhyw gyfrifoldeb am unrhyw golled, difrod neu anhwylystod a all godi oherwydd hyn.

Using Bus Services/Defnyddio Gwasanaethau Bws

Using Bus Services

When you intend to use a bus service it's always a good idea to plan your journey in advance by checking the timetable. Always arrive at the bus stop in plenty of time. Please have your money, ticket or pass ready when you board. If you are purchasing a ticket, please have as close to the exact fare as possible. You can find out the fare in advance by telephoning the bus operator concerned before you travel. See back cover for contact numbers.

All bus stops are 'on request'. When you see the bus approaching your bus stop, make a clear signal by raising your arm in plenty of time to allow the driver to see you and stop safely. If you are not the only person waiting for the bus, don't assume that someone else will signal for the bus to stop. Some bus stops are served by numerous bus routes so it is especially important that you make it clear that you require the bus to stop.

If you're catching a bus during the hours of darkness, it is helpful if you wear something light coloured or reflective to assist the driver in seeing you, especially if you are waiting at a bus stop on an unlit road.

Once you have paid the driver or shown your ticket / pass, please make your way to a seat as soon as possible. If no seats are available stand in a safe position and use the hand rails provided. Ensure that priority seats for elderly or disabled customers are kept free whilst other seats are available.

When you wish to get off the bus, press the nearest bell button in plenty of time and wait until the bus stops before standing up to alight. Remember to check that you have all of your belongings before leaving the bus.

Defnyddio Gwasanaethau Bws

Pan fyddwch yn bwriadu defnyddio gwasanaeth bws, mae bob amser yn syniad da cynllunio'ch siwrnai ymlaen llaw drwy edrych ar yr amserlen. Cofiwch gyrraedd y safle bws mewn da bryd. Gofalwch fod gennych eich arian, eich tocyn neu'ch pas yn barod wrth i chi fynd ar y bws. Os ydych yn prynu tocyn, gofalwch fod yr arian sydd gennych yn cyfateb mor agos â phosibl at union bris y siwrnai. Gallwch holi am y pris hwn drwy ffonio'r gweithredwr bws dan sylw cyn i chi deithio. Gweler y clawr cefn am rhifau ffôn.

Mae'n rhaid i chi ofyn i'r bws stopio yn y safleoedd bws. Pan welwch y bws yn dod, codwch eich braich mewn da bryd i ddangos i'r gyrrwr eich bod am i'r bws stopio. Os nad chi yw'r unig un sy'n aros am y bws, peidiwch â chymryd yn ganiataol y bydd rhywun arall yn stopio'r bws. Mae rhai safleoedd bws yn cael eu defnyddio gan nifer o wahanol lwybrau bws felly mae'n bwysig iawn eich bod yn dangos eich bod am i'r bws stopio.

Os byddwch yn dal bws yn y tywyllwch, byddai'n syniad da gwisgo dillad golau neu adlewyrchol i helpu'r gyrrwr i'ch gweld, yn enwedig os byddwch yn aros mewn safle bws ar ffordd heb olau.

Ar ôl talu'ch gyrrwr neu ar ôl dangos eich tocyn / pas, ewch i'ch sedd cyn gynted â phosibl. Os nad oes seddi ar gael, sefwch mewn lle diogel a defnyddiwch y rheiliau llaw pwrpasol. Gofalwch fod seddi ar gyfer yr henoed neu gwsmeriaid anabl yn cael eu cadw'n wag os oes seddi eraill ar gael.

Pan fyddwch am fynd oddi ar y bws, pwyswch y gloch agosaf mewn da bryd ac arhoswch i'r bws stopio cyn codi i adael y bws. Cofiwch wneud yn siŵr bod eich holl eiddo gennych cyn gadael y bws.

Index to Places Served/Mynegai i'r Mannau a Wasanaethir

Abermorddu	26, 27, 28, 40, DB1, X9	Burntwood Inn	7X
Afonwen	14, 14A	Cadole	1, X1, 6
Aston Courtland Drive	12	Caer Estyn	28A
Aston Plough	7X, 12, 110, SP1, SP2	Caergwrlle High Street / Stryd Fawr	26, 27, DB1
Axton	19	Caergwrlle Station / Gorsaf Tren	26, 27, 28, X9
Babell	14A	Caerwys	14, 14A
Bagillt	10A, 11, 11A, 18, 19	Calcoed	127, 14C
Berthengam	19	Carmel	14A, 14C, 19, 127
Bretton Village	X9	Cefn-y-Bedd	26, 27, 28, 40, X9
Broughton Airbus Brychdyn	3, 3A, 4, 4S, X4, 11, 11A 12 X9, 811	Central Drive Shotton	12
Broughton Retail Park / Parc Manwerthu Brychdyn	3, 3A, 4, 4S, 11A, 12, X9, 811 X4, X1, CT1, 109	Cheshire Oaks	SP1, SP2
Broughton Village / Pentref Brychdyn	3, 3A, 4S, CT1	Chester Bus Interchange / Caer Cyfnewidfa Bws	10, 10A, 11, 11A, 12, 16, 3, 3A, DB1, DB2, DB4
Brynford	14C, 22A, 127	Chester Countess Hospital / Ysbyty Iarlles Caer	9
Bryn-y-Baal	4, 4S, SP1	Chester / Caer Foregate Street	3, 3A, 4S, 9, 12, 16, DB1, X4, DB2, T1
Buckley Bryn Awelon Bwcle	21A/B	Chester Railway Station / Gorsaf Trên Caer	X1, 4, 4S, X4, 11
Buckley Cross / Croes Bwcle	3, 3A, 4, 4S, 28, 28A, X4 SP2, 21A/B	Chester Business Park / Parc Busnes Caer	X4
Buckley / Bwcle Horse & Jockey	4, 4S, 21A/B	Chester Greyhound Park (A548) / Parc Greyhound Caer	10, 10A, T1
Buckley Liverpool Road / Bwcle Ffordd Lerpwl	SP1, SP2, X4	Cilcain	14C
Buckley / Bwcle Precinct Way	3, 3A, 21A/B, SP1	Clwyd Theatr Cymru	9, 28, 28A,
Buckley Station / Gorsaf Trên Bwcle	3, 3A, 21A/B, 28, 28A		

Index to Places Served/Mynegai i'r Mannau a Wasanaethir

Connah's Quay / Cei Connah Boathouse	8, 10, 10A, 11, 11A, 12, T1, D1 99	Flint / Fflint	10A, 11, 11A, 11F, 18, 19, 28, 28A, 28X, S28, T1, D1, D3
Connah's Quay Civic Centre / Canolfan Ddinesig Cei Connah	9, 109, X9	Flint Cornist / Fflint Cornist	18, 19, D3
Connah's Quay Shopping Centre / Canolfan Siopa Cei Connah	8, 10, 12	Flint Prince of Wales Avenue / Fflint Rhodfa Tywysog Cymru	28, 18A, D3
Connah's Quay Llwyni Drive / Cei Connah Rhodfa Llwyni	9, X9, 109	Garden City	8, 9, 10, 10A, SP1, SP2, T1, D1
Cornist Road Hospital Flint / Ysbyty Fflint	18, 19	Gorsedd	14A, 14C, 19, 127
Cymau	40, DB1,	Greenfield Packet House Maesglas	11, 11F, 11G, 11M, 18
Deeside College / Coleg Glannau Dyfrdwy	7X, 10A, 11, 11A, T1, D1, D2	Greenfield School Lane / Lôn yr Ysgol Maesglas	11, 11G, 11M, 18, 23
Deeside Community Hospital / Ysbyty Cymunedol Glannau Dyfrdwy	12	Gronant Crossroads / Croesffordd Gronant	11, 11A, 11G, 11M, 18
Deeside Industrial Park/ Parc Diwydiannol Glannau Dyfrdwy	SP1, SP2, D1, D2, D3, DB4	Gronant Village / Pentref Gronant	11G, 18
Denbigh / Dinbych	14, 14A	Gwaenysgor	19
Dobshill	3, 3A, 28, 28A	Gwernaffield	6, 6A
Drury Parrot Inn	4, 4S	Gwernymynydd	1, 2, 6, X1
Ellesmere Port	SP1, SP2	Gwersyllt	26, 27, 28, 40
Ewloe / Ewlo	110, SP1, SP2, X4	Gwespyr	18
Ffrith Cymau Road Junction / Cyffordd Ffordd Cymau Ffrith	40, DB1	Halkyn / Helygain	126
Ffynongroyw	11, 11F, 11G, 11M, 18	Hawarden / Penarlâg	4, 4S, X4, X9
		Holway	14A, 14C, 19, 22, 127
		Hawarden High School / Ysgol Uwchradd Penarlâg	7X
		Holywell Bus Station / Gorsaf Fws Treffynnon	10A, 11, 11A, 11F, 11G, 11M, 14A, 14C, 18, 19, 22, 22A, 23, 126, T1

Index to Places Served/Mynegai i'r Mannau a Wasanaethir

Holywell Hospital / Ysbyty Treffynnon	22A, 23, 126	Mostyn Maes Pennant	11, 11M, 18
Hope Fagl Lane / Yr Hob Lôn Fagl	DB1	Mount Pleasant, Flint / Fflint	11A, 28
Hope / Yr Hob Hall Drive	28A	Mynydd Isa	3, 3A, 4, 4S, X4, SP1, SP2
Kinnerton	DB1, X9, CT1	Nannerch	14, 14C
Leeswood	26, 27	Nercwys	40, DB1
Lixwm / Licswm	14, 14C	New Brighton	4, 4S, SP1
Llanasa	19	Northop / Llaneurgain	8, 9, 11A, 28, 28A, 109, 110
Llanfynydd	40, DB1	Northop Hall / Neuadd Llaneurgain	8, 9, 110, X9
Llay / Llai	28A	Oakenholt	11, 11A, T1, D3
Lloc	19, 14A	Padeswood	X1
Loggerheads Country Park / Parc Gwledig Loggerheads	1, X1	Pantasaph	14C, 127
Mancot	11A, 12, 99	Pantymwyn	6, 6A
Mancot Chapel/Mechanics	7X, 11A, 99	Pen-ffordd-Llan	19
Manor Lane Hawarden	7X, 11A, 12, 811	Pentre Halkyn	126
Milwr	126	Penyffordd (Holywell / Treffynnon)	18
Moel-y-Crio	127	Penyffordd (Chester / Caer)	3, 3A, 28, 28A
Mold Bus Station / Gorsaf Fws Yr Wyddgrug	1, X1, 2, 3, 3A, 4, 4S, X4, 6, 6A, 8, 9, X9, 11A, 14, 14C, 26, 27, 28, 28A, 28X, S28, 40, DB1, 109, 110, SP1, SP2, 126, 127	Pen y Maes, Wood Lane	14A, 14C, 22
Mold / Yr Wyddgrug Parc Hendy	6	Penymynydd Roundabout / Cylchfan Penymynydd	3, 28, 28A
Mostyn Glan y Don	11X, 11G, 18	Pontblyddyn Crossroads / Croesffordd Pontblyddyn	26, 27
		Prestatyn Bus Station / Gorsaf Fws Prestatyn	11, 11G, 11M, 18, 19
		Quay Shopping Centre / Canolfan Siopa	8, 10, 12

Index to Places Served/Mynegai i'r Mannau a Wasanaethir

Queensferry / Y Fferi Isaf	8, 9, 10, 10A, 11A, SP1, SP2
Queensferry Asda	8, 12, SP1, SP2, X9
Rhesycae	14C, 127
Rhewl Mostyn	11, 11M, 18
Rhosesmor	126, 127
Rhydymwyn	14, 14C
Rhyl / Y Rhyl	11, 11G, 11M, 18, 19
Ruthin / Rhuthun	1, 2, X1
Saltney	3, 3A, 4, 4S, 11, 11A, 12, 16, DB2,
Saltney Ferry	DB2,
Sandycroft	11A, 12, 99
Sealand Manor	8
Shotton	8, 9, 10, 10A, 11, 11A, 12, 109, X9, D1
Southdown, Buckley / Bwcle	21 A/B
Spon Green, Buckley / Bwcle	21 A/B
Strand Holywell / Treffynnon	126
Sunningdale Buckley / Bwcle	21 A/B
Sychdyn	8, 9, X9, 11A, 28, 28A, 109, 110
Talacre Beach Club	18
Tan Lan	11, 11F, 11G, 11M
Trelawnyd	19
Trelogan	19
Tre Mostyn	19



0800 464 0000
www.traveline.cymru

Traveline Cymru

Gwybodaeth teithio didrafferth
Trouble free travel info

Treuddyn	40, DB1,
Tyn-y-Morfa	11M (Sundays/Dydd Sul), 18
Wern Bagillt	18, 19
Whitford	19
Wood Lane	7X
Wrexham Bus Station / Gorsaf Fws Wrecsam	26, 27, 28, 40, X9
Wrexham Maelor Hospital / Ysbyty Maelor Wrecsam	26, 27, 28, X9
Ysceifiog	14C

List of services included in this timetable

Y gwasanaethau sy'n ymddangos yn yr amserlen hon

Service / Gwasanaeth	Route / Llwybr	Page / Tudalen
1/X1/2	Mold/Yr Wyddgrug - Gwernymynydd - Llanarmon yn Iâl - Ruthin/Rhuthun - Chester/Caer	11 - 12
3/3A	Mold/Yr Wyddgrug - Buckley/Bwcle - Penyffordd - Broughton/Brychdyn - Saltney - Chester/Caer	13 - 14
4/4S	Mold/Yr Wyddgrug - New Brighton - Mynydd Isa - Buckley/Bwcle - Hawarden/Penarlâg - Broughton/Brychdyn - Chester/Caer	15 - 22
X4	Mold/Yr Wyddgrug - Buckley/Bwcle - Ewloe/Ewlo - Broughton/Brychdyn - Chester/Caer	23 - 24
6/6A	Mold/Yr Wyddgrug - Pantymwyn	25
7X	Hawarden/Penarlâg - Deeside College/Coleg Cambria	26
8	Sealand Manor - Queensferry Asda/Asda Y Fferi Isaf - Shotton - Northop Hall - Northop/Llaneurgain - Mold/Yr Wyddgrug	27
9/X9/109	Mold/Yr Wyddgrug - Connah's Quay/Cei Connah - Queensferry/Y Fferi Isaf - Wrexham/Wreccsam - Chester/Caer	28 - 29
10/10A	Holywell/Treffynnon - Connah's Quay/Cei Connah - Shotton - Queensferry/Y Fferi Isaf - Chester/Caer	30 - 32
11/11A	Holywell/Treffynnon - Mold/Yr Wyddgrug - Flint/Fflint - Shotton - Mancot - Broughton/Brychdyn - Chester/Caer	33 - 37
11G/11M/11F/11X	Holywell/Treffynnon - Prestatyn - Rhyl	38 - 40
12	Connah's Quay/Cei Connah - Deeside Hospital/Ysbyty Glannau Dyfrdwy - Mancot Chester/Caer	41 - 42
14	Mold/Yr Wyddgrug - Bodfari - Denbigh/Dinbych	43 - 44
14A	Holywell/Treffynnon - Carmel - Gorsedd - Babell - Caerwys - Afonwen - Denbigh/Dinbych	45 - 46
14C	Holywell/Treffynnon - Lix - Cilcain - Mold/Yr Wyddgrug - RuralRider	47 - 48
16	Chester/Caer - Lache - Saltney	49 - 51
18	Flint Cornist/Fflint Cornist - Holywell/Treffynnon - Penyffordd - Prestatyn - Rhyl	52 - 54
19	Flint Cornist/Fflint Cornist - Holywell/Treffynnon - Trelogan - Prestatyn - Rhyl	55 - 57
21, 21A, 21B	Buckley Station/Gorsaf Bwcle - Precinct Way - Southdown	58
22/22A	Holway - Pen-y-Maes/Brynford - Holway	59
23	Greenfield/Maesglas - Holywell/Treffynnon - Holywell Hospital/Ysbyty Treffynnon	60
26/27	Mold/Yr Wyddgrug - Leeswood - Caergwrle - Maelor Hospital/Ysbyty Maelor - Wrexham/Wreccsam	61 - 62

List of services included in this timetable

Y gwasanaethau sy'n ymddangos yn yr amserlen hon

Service / Gwasanaeth	Route / Llwybr	Page / Tudalen
28/28A/28X/S28	Flint/Fflint - Northop/Llaneurgain - Sychdyn- Mold/Yr Wyddgrug - Buckley/Bwcle - Penyffordd - Wrexham/Wreccsam	63 - 66
40	Mold/Yr Wyddgrug - Nercwys - Treuddyn - Llanfynydd - Ffrith - Cymau - Wrexham/Wreccsam	67 - 68
99	Sandycroft - Mancot - Shotton - Connah's Quay/Cei Connah - Mold Campus	69
110	Aston - Ewloe/Ewlo - Northop Hall - Northop/Llaneurgain - Sychdyn - Mold/Yr Wyddgrug	70
124	Holywell/Treffynnon - Pentre Halkyn - Halkyn/Helygain - Rhosesmor - Holywell/Treffynnon	71
126	Holywell/Treffynnon - Pentre Halkyn - Rhosesmor - Mold/Yr Wyddgrug	72
127	Mold/Yr Wyddgrug - Rhosesmor - Lixwm / Licswm - Brynford - Pantasaph - Holway	73
811	Leasowe/Arrowe Park - Deeside Ind Park/Ystâd Ddiwydiannol Glannau Dyfrdwy - Broughton/Brychdyn	74
D1/D2/D3	Flint/Y Fflint - Connah's Quay/Cei Connah - Shotton - Garden City - Deeside Industrial Park/Parc Diwydiannol Glannau Dyfrdwy	75 - 79
DB1	Mold/Yr Wyddgrug - Treuddyn/Leeswood - Higher Kinnerton - Chester/Caer	80
DB2	Chester/Caer - Curzon Park - Saltney Ferry	81
DB4	Chester/Caer - Deeside Ind Park/Ystâd Ddiwydiannol Glannau Dyfrdwy	82
SP1/SP2	Mold/Yr Wyddgrug - Buckley/Bwcle - Queensferry/Y Fferi Isaf - Deeside Industrial Park/Parc Diwydiannol Glannau Dyfrdwy - Ellesmere Port	83
T1	Greenfield/Maes Glas - Holywell/Treffynnon - Flint/Fflint - Deeside/Glannau Dyfrdwy - Chester/Caer	84
CT1	Higher Kinnerton - Broughton Retail Park/Parc Manwerthu Brychdyn	85

Ruthin/Rhuthun - Mold/Yr Wyddgrug - Chester/Caer

via/drwy Llanferres (X1, 1), Llanarmon yn lâl (1, 2) and/ac Graianrhyd (2)

Stagecoach

X1, 1, 2

Monday to Saturday (except Bank Holidays)

Dydd Llun i Sadwrn (heblaw Gwyliau Cyhoeddus)

Service Number/Rhif Gwasanaeth	1 SDO	1 SSH	2	X1	2	2	X1	2	2 SDO	1 SSH	X1	1 NS	X1
Ruthin/Rhuthun , Market St/Stryd y Farchnad	0745	0745	0900	0930	1020	1220	1240	1440	1530	1545	1630	1735	1800
Ruthin Ysgol Brynhyfryd	-	-	-	-	-	-	-	-	1540	-	-	-	-
Llanbedr, Griffin Inn	0750	0750	0905	0935	1025	1225	1245	1445	1545	1550	1635	1740	1805
Llanarmon-yn-lâl	0805	0805	0920	-	1040	1240	-	1500	1600	1605	-	1755	-
Llanferres	0812	0812	-	0944	-	-	1254	-	-	1612	1644	1802	1814
Tafarn-y-Gelyn	0814	0814	-	0946	-	-	-	-	-	-	-	-	-
Loggerheads (A494)	0816	0816	-	0948	-	-	1258	-	-	1616	1648	1806	1818
Cadole	0817	0817	-	0949	-	-	1259	-	-	1617	1649	1807	1819
Graianrhyd	-	-	0925	-	1045	1245	-	1505	1605	-	-	-	-
Eryrys	-	-	0931	-	1051	1251	-	1511	1611	-	-	-	-
Maeshafn	-	-	0937	-	1057	1257	-	1517	1617	-	-	-	-
Gwernymynydd School	0818	0818	0941	0950	1101	1301	1300	1521	1621	1618	1650	1808	1820
Mold/Yr Wyddgrug Bus Stn /Gorsaf Fwsiau	0823	0823	0946	0954	1106	1306	1304	1526	1626	1623	1655	1813	1824
			↓			↓					↓		
Mold/Yr Wyddgrug Bus Stn /Gorsaf Fwsiau	0823	-	-	0955	-	-	1305	-	-	-	-	-	1825
Mold Campus	0828	-	-	-	-	-	-	-	-	-	-	-	-
Padeswood, Castle Cement	-	-	-	1003	-	-	1313	-	-	-	-	-	1833
Broughton Retail Park	-	-	-	1012	-	-	1322	-	-	-	-	-	1842
Chester Foregate Street	-	-	-	1028	-	-	1338	-	-	-	-	-	1858
Chester/Caer Railway Stn/Gorsaf Reilffordd	-	-	-	1030	-	-	1340	-	-	-	-	-	1900

Codes / Codiau
SDO - Schooldays Only / Dyddiau Ysgol yn unig
SSH - Saturdays and School Holidays / Dydd Sadwrn a Gwyliau Ysgol
NS - Not Saturdays / Dim ar ddyddiau Sadwrn

Chester /Caer - Mold/Yr Wyddgrug - Rhuthun/Ruthin

via/drwy Llanferres (X1, 1), Llanarmon yn Iâl (1, 2) and/ac Graianrhyd (2)

Stagecoach

X1, 1, 2

Monday to Saturday (except Bank Holidays)

Dydd Llun i Sadwrn (heblaw Gwyliau Cyhoeddus)

Service Number/Rhif Gwasanaeth	X1	1 SSH	2 SDO	2	X1	2	X1	2	X1	1 SDO	1 SSH	2 NS	1
Chester/Caer Railway Stn/Gorsaf Reilffordd	0630	-	-	-	-	-	1110	-	1420	-	-	-	-
Chester Foregate Street	0634	-	-	-	-	-	1114	-	1424	-	-	-	-
Broughton Retail Park	0651	-	-	-	-	-	1134	-	1444	-	-	-	-
Padeswood Castle Cement	0700	-	-	-	-	-	1145	-	1455	-	-	-	-
Mold/Yr Wyddgrug Bus Stn /Gorsaf Fwsiau Arr	0708	-	-	-	-	-	1153	-	1502	-	-	-	-
	↓						↓		↓				
Mold/Yr Wyddgrug Bus Stn /Gorsaf Fwsiau Dep	0710	0800	0800	0845	0950	1115	1155	1315	1503	1530	1550	1650	1720
Mold Campus	-	-	-	-	-	-	-	-	-	1535	-	-	-
Gwernymynydd School/Ysgol Gwernymynydd	0716	0806	0806	0851	0956	1121	1201	1321	1509	1551	1556	1656	1726
Maeshafn	-	-	0810	0855	-	1125	-	1325	-	-	-	1700	-
Eryns	-	-	0816	0901	-	1131	-	1331	-	-	-	1706	-
Graianrhyd	-	-	0822	0907	-	1137	-	1337	-	-	-	1712	-
Cadole	0718	0808	-	-	0958	-	1203	-	1511	1553	1558	-	1728
Loggerheads (A494)	0719	0809	-	-	0959	-	1204	-	1512	1554	1559	-	1729
Tafarn-y-Gelyn	-	0811	-	-	1001	-	-	-	-	1556	-	-	-
Llanferres	0723	0813	-	-	1003	-	1208	-	1516	1558	1603	-	1733
Llanarmon-yn-Iâl	-	0820	0827	0912	-	1142	-	1342	-	1605	1610	1717	1740
Llanbedr Griffin Inn	0729	0832	0839	0924	1009	1154	1214	1354	1522	1617	1622	1729	1752
Ruthin Ysgol Brynhyfryd	-	-	0844	-	-	-	-	-	-	-	-	-	-
Rhuthun/Ruthin , Stryd y Farchnad/Market Street	0734	0837	0849	0929	1014	1159	1219	1359	1527	1622	1627	1734	1757

Codes / Codiau
SDO - Schooldays Only / Dyddiau Ysgol yn unig
SSH - Saturdays and School Holidays / Dydd Sadwrn a Gwyliau Ysgol
NS - Not Saturdays / Dim ar ddyddiau Sadwrn

Mold/Yr Wyddgrug - Chester/Caer

via/drwy Buckley/Bwcle, Penyffordd and/a Broughton/Brychdyn

Arriva

3, 3A

Monday to Saturday (except Bank Holidays)

Dydd Llun i Sadwrn (heblaw Gwyliau Cyhoeddus)

Service Number/Rhif Gwasanaeth	3	3	3	3	3	3	3	3	3	3	3	3
Mold Bus Station, Stand 5	0621	0721	0841	0941	1041	1141	1241	1341	1441	1541	1641	1741
Buckley Cross	0630	0730	0850	0950	1050	1150	1250	1350	1450	1550	1650	1750
Penyffordd, War Memorial Institute	0644	0744	0904	1004	1104	1204	1304	1404	1504	1604	1704	1804
Broughton Village Shops	0650	0750	0910	1010	1110	1210	1310	1410	1510	1610	1710	1810
Broughton Airbus	0654	0754	0914	1014	1114	1214	1314	1414	1514	1614	1714	1814
Broughton Retail Park	0656	0756	0916	1016	1116	1216	1316	1416	1516	1616	1716	1816
Bretton, Lane End	0700	0800	0920	1020	1120	1220	1320	1420	1520	1620	1720	1820
Saltney High Street	0704	0804	0924	1024	1124	1224	1324	1424	1524	1624	1724	1824
Chester Bus Interchange*	0718	0818	0938	1038	1138	1238	1338	1438	1538	1638	1738	1838
Chester Railway Station	-	-	-	-	-	-	-	-	-	-	-	-

Service Number/Rhif Gwasanaeth	3A	3A	3A	3A	3A
Mold Bus Station, Stand 5	1840	1930	2030	2130	2230
Buckley Cross	1849	1939	2039	2139	2239
Penyffordd, War Memorial Institute	1859	1949	2049	2149	2249
Broughton Village Shops	1904	1954	2054	2154	2254
Broughton Airbus	1908	1958	2058	2158	2258
Broughton Retail Park	1910	2000	2100	2200	2300
Bretton, Lane End	1914	2004	2104	2204	2304
Saltney High Street	1917	2007	2107	2207	2307
Chester Bus Interchange*	-	-	-	-	-
Chester Railway Station	1930	2020	2120	2220	2320

* Please note that the opening of the new Chester Bus Interchange has been delayed until 5 June 2017. In the meantime this service will commence and terminate at the Bus Exchange in Princess Street until the new bus station is fully operational. / Mae agor Cyfnewidfa Bysiau Caer wedi ei ohirio tan 5 Mehefin 2017. Bydd y gwasanaeth hwn yn cychwyn ac yn gorffen yn y Gyfnewidfa Fysiau ar Princess Street hyd nes bydd yr orsaf fysiau newydd yn gwbl weithredol.

Monday to Saturday (except Bank Holidays)

Dydd Llun i Sadwrn (heblaw Gwyliau Cyhoeddus)

Service Number/Rhif Gwasanaeth	3	3	3	3	3	3	3	3	3	3	3	3
Chester Railway Station	-	-	-	-	-	-	-	-	-	-	-	-
Chester Bus Interchange*	-	0733	0833	0933	1033	1133	1233	1333	1433	1533	1633	1733
Saltney High Street	-	0745	0845	0945	1045	1145	1245	1345	1445	1545	1645	1745
Bretton, Lane End	-	0753	0853	0953	1053	1153	1253	1353	1453	1553	1653	1753
Broughton Retail Park	-	0756	0856	0956	1056	1156	1256	1356	1456	1556	1656	1756
Broughton Airbus	-	0758	0858	0958	1058	1158	1258	1358	1458	1558	1658	1758
Broughton Village Shops	0645	0804	0904	1004	1104	1204	1304	1404	1504	1604	1704	1804
Penyffordd, Millstone Inn	0651	0810	0910	1010	1110	1210	1310	1410	1510	1610	1710	1810
Buckley Cross	0706	0825	0925	1025	1125	1225	1325	1425	1525	1625	1725	1825
Mold Bus Station	0715	0834	0934	1034	1134	1234	1334	1434	1534	1634	1734	1834

Service Number/Rhif Gwasanaeth	3A	3A	3A	3A	3A
Chester Railway Station	1830	1930	2030	2130	2230
Chester Bus Interchange*	-	-	-	-	-
Saltney High Street	1840	1940	2039	2139	2239
Bretton, Lane End	1846	1946	2045	2145	2245
Broughton Retail Park	1849	1949	2048	2148	2248
Broughton Airbus	1851	1951	2050	2150	2250
Broughton Village Shops	1857	1957	2056	2156	2256
Penyffordd, Millstone Inn	1903	2003	2101	2201	2301
Buckley Cross	1913	2013	2107	2207	2307
Mold Bus Station	1921	2021	2117	2217	2317

* Please note that the opening of the new Chester Bus Interchange has been delayed until 5 June 2017. In the meantime this service will commence and terminate at the Bus Exchange in Princess Street until the new bus station is fully operational. / Mae agor Cyfnewidfa Bysiau Caer wedi ei ohirio tan 5 Mehefin 2017. Bydd y gwasanaeth hwn yn cychwyn ac yn gorffen yn y Gyfnewidfa Fysiau ar Princess Street hyd nes bydd yr orsaf fysiau newydd yn gwbl weithredol.

Mold/Yr Wyddgrug - Chester/Caer

via/drwy New Brighton, Mynydd Isa, Buckley/Bwcle, Drury, Hawarden, Broughton/Brychdyn, and/a Saltney

Arriva

4, 4S

Monday to Friday (except Bank Holidays)

Dydd Llun i Gwener (heblaw Gwyliau Cyhoeddus)

Service Number/Rhif Gwasanaeth	4S	4	4		4	4		4	4	4	4	4
Mold , Bus Station, Stand 5	0554	0703	0733	then of these mins / yna'r munudau hyn	03	33	past each hour until / ar ôl pob awr tan	1403	1433	1503	1533	1603
New Brighton, Rose & Crown	0559	0708	0738		08	38		1408	1438	1509	1539	1609
Mynydd Isa, Mercia Inn	0602	-	-		-	-		-	-	-	-	-
Mynydd Isa, Llewelyn Drive/Park Ave	-	0710	0740		10	40		1410	1440	1511	1541	1611
Buckley Cross	0607	0717	0747		17	47		1417	1447	1519	1549	1619
Drury Parrot Inn	0612	0723	0753		23	53		1423	1453	1525	1555	1625
Hawarden High School	0619	0731	0801		31	01		1431	1501	1532	1602	1632
Broughton, Arriva Depot	0626	0738	0808		38	08		1438	1508	1538	1608	1638
Broughton Village Shops	0628	-	-		-	-		-	-	-	-	-
Broughton Airbus	0630	0742	0812		42	12		1442	1512	1542	1612	1642
Bretton Lane End	0632	0746	0816		46	16		1446	1516	1546	1616	1646
Saltney High Street	0636	0750	0820		50	20		1450	1520	1550	1620	1650
Chester Argos Stop B	0648	0802	0832	02	32	1502	1532	1602	1632	1702		
Chester Railway Station	0650	0804	0834	04	34	1504	1534	1604	1634	1704		

Mold/Yr Wyddgrug - Chester/Caer

via/drwy New Brighton, Mynydd Isa, Buckley/Bwcle, Drury, Hawarden, Broughton/Brychdyn, and/a Saltney

Arriva

4, 4S

Monday to Friday (except Bank Holidays)

Dydd Llun i Gwener (heblaw Gwyliau Cyhoeddus)

Service Number/Rhif Gwasanaeth	4	4	4	4	4	4	4	4	4
Mold , Bus Station, Stand 5	1633	1703	1803	1833	1900	2000	2100	2200	2300
New Brighton, Rose & Crown	1639	1709	1807	1837	1904	2004	2104	2204	2304
Mynydd Isa, Mercia Inn	-	-	-	-	-	-	-	-	2307
Mynydd Isa, Llewelyn Drive/Park Ave	1641	1711	1809	1839	1906	2006	2106	2206	-
Buckley Cross	1649	1719	1815	1845	1912	2012	2112	2212	2312
Drury Parrot Inn	1655	1725	1819	1849	1916	2016	2116	2216	2316
Hawarden High School	1702	1732	1825	1855	1922	2022	2122	2222	2322
Broughton, Arriva Depot	1708	1738	1833	1903	-	-	-	-	2330
Broughton Airbus	1712	1742	1837	-	1932	2032	2132	2232	-
Bretton Lane End	1716	1746	1841	-	1938	2038	2138	2238	-
Saltney High Street	1720	1750	1845	-	1942	2042	2142	2242	-
Chester Argos Stop B	1732	1802	1857	-	1953	2053	2152	2252	-
Chester Railway Station	1734	1804	1859	-	1955	2055	2154	2254	-

Monday to Friday (except Bank Holidays)

Dydd Llun i Gwener (heblaw Gwyliau Cyhoeddus)

Service Number/Rhif Gwasanaeth	4	4	4	4		4	4		4	4	4	4
Chester Railway Station	-	-	0655	0740	then at these mins / ynd r' munudau hyn	10	40	post each hour until / ar ôl pob awr tan	1410	1440	1510	1540
Saltney High Street	-	-	0708	0753		23	53		1423	1453	1526	1556
Bretton Lane End	-	-	0716	0801		31	01		1431	1501	1536	1606
Broughton Retail Park	-	-	0718	0803		33	03		1433	1503	1538	1608
Broughton Airbus	-	-	0720	0805		35	05		1435	1505	1540	1610
Broughton, Arriva Depot	0630	0700	0725	0810		40	10		1440	1510	1546	1616
Hawarden High School	0637	0707	0732	0817		47	17		1447	1517	1553	1623
Hawarden Sycamore Lodge	0639	0709	0734	0819		49	19		1449	1519	1555	1625
Drury Parrot Inn	0643	0713	0738	0823		53	23		1453	1523	1559	1629
Buckley Cross	0649	0719	0744	0829		59	29		1459	1529	1606	1636
Mynydd Isa, Park Ave / Llewellyn Drive	0653	0723	0748	0833	03	33	1503	1533	1610	1640		
Mold , Bus Station	0702	0732	0757	0842	12	42	1512	1542	1619	1649		

Chester/Caer - Mold/Yr Wyddgrug

via/drwy Saltney, Broughton/Brychdyn, Hawarden, Drury, Buckley/Bwcle, Mynydd Isa, and/a New Brighton

Arriva

4

Monday to Friday (except Bank Holidays)

Dydd Llun i Gwener (heblaw Gwyliau Cyhoeddus)

Service Number/Rhif Gwasanaeth	4	4	4	4	4	4	4	4	4
Chester Railway Station	1610	1640	1710	1800	1900	2000	2100	2200	2300
Saltney High Street	1626	1656	1726	1811	1910	2010	2110	2210	2310
Bretton Lane End	1636	1706	1736	1819	1917	2017	2117	2217	2317
Broughton Retail Park	1638	1708	1738	1820	1919	2019	2119	2219	2319
Broughton Airbus	1640	1710	1740	1822	1921	2021	2121	2221	2321
Broughton, Arriva Depot	1646	1716	1746	1827	-	-	-	-	-
Hawarden High School	1653	1723	1753	1833	1931	2031	2131	2231	2331
Hawarden Sycamore Lodge	1655	1725	1755	1835	1933	2033	2133	2233	2333
Drury Parrot Inn	1659	1729	1759	1839	1937	2037	2137	2237	2337
Buckley Cross	1706	1736	1806	1845	1943	2043	2143	2243	2343
Mynydd Isa, Park Ave / Llewellyn Drive	1710	1740	1810	1849	1947	2047	2247	2347	2347
Mold , Bus Station	1719	1749	1819	1858	1955	2055	2155	2255	2355

Mold/Yr Wyddgrug - Chester/Caer

via/drwy New Brighton, Mynydd Isa, Buckley/Bwcle, Drury, Hawarden, Broughton/Brychdyn, and/a Saltney

Arriva

4, 4S

Saturday

Dydd Sadwrn

Service Number/Rhif Gwasanaeth	4S	4	4		4	4		4	4	4	4	4	4	4	4
Mold , Bus Station, Stand 5	0554	0703	0733	then at these mins / ynd r. munudau hyn	03	33	past each hour until / ar ôl pob awr tan	1703	1803	1833	1900	2000	2100	2200	2300
New Brighton, Rose & Crown	0559	0708	0738		08	38		1708	1807	1838	1904	2004	2104	2204	2304
Mynydd Isa, Mercia Inn	0602	-	-		-	-		-	-	-	-	-	-	-	2307
Mynydd Isa, Llewelyn Drive/Park Ave	-	0710	0740		10	40		1710	1809	1840	1906	2006	2106	2206	-
Buckley Cross	0607	0717	0747		17	47		1717	1815	1847	1912	2012	2112	2212	2312
Drury Parrot Inn	0612	0723	0753		23	53		1723	1819	1853	1916	2016	2116	2216	2316
Hawarden High School	0619	0731	0801		31	01		1731	1825	1901	1922	2022	2122	2222	2322
Broughton, Arriva Depot	0626	0738	0808		38	08		1738	1833	1908	-	-	-	-	2330
Broughton Village Shops	0628	-	-		-	-		-	-	-	-	-	-	-	-
Broughton Airbus	0630	0742	0812		42	12		1742	1837	-	1932	2032	2132	2232	-
Broughton Retail Park	-	-	-		-	-		-	-	-	1934	2034	2134	2234	-
Bretton Lane End	0632	0746	0816		46	16		1746	1841	-	1938	2038	2138	2238	-
Saltney High Street	0636	0750	0820		50	20		1750	1845	-	1942	2042	2142	2242	-
Chester Argos Stop B	0648	0802	0832		02	32		1802	1857	-	1953	2053	2152	2252	-
Chester Railway Station	0650	0804	0834	04	34	1804	1859	-	1955	2055	2154	2254	-		

Chester/Caer - Mold/Yr Wyddgrug

via/drwy Saltney, Broughton/Brychdyn, Hawarden, Drury, Buckley/Bwcle, Mynydd Isa, and/a New Brighton

Arriva

4, 4S

Saturday

Dydd Sadwrn

Service Number/Rhif Gwasanaeth	4	4	4	4	4	4	4	4	4	4	4	4	4	4	4
Chester Railway Station	-	-	0710	0740	then at these mins / yna'r munudau hyn	10	40	post each hour until / ar ôl pob awr tan	1710	1800	1900	2000	2100	2200	2300
Saltney High Street	-	-	0723	0753		23	53		1723	1811	1910	2010	2110	2210	2310
Bretton Lane End	-	-	0731	0801		31	01		1731	1819	1917	2017	2117	2217	2317
Broughton Retail Park	-	-	0733	0803		33	03		1733	1821	1919	2019	2119	2219	2319
Broughton Airbus	-	-	0735	0805		35	05		1735	1822	1921	2021	2121	2221	2321
Broughton, Arriva Depot	0640	0710	0740	0810		40	10		1740	1827	-	-	-	-	-
Hawarden, High School	0647	0717	0747	0817		47	17		1747	1833	1931	2031	2131	2231	2331
Hawarden Sycamore Lodge	0649	0719	0749	0819		49	19		1749	1835	1933	2033	2133	2233	2333
Drury Parrot Inn	0652	0722	0752	0822		52	22		1752	1838	1936	2036	2136	2236	2336
Buckley Cross	0659	0729	0759	0829		59	29		1759	1845	1943	2043	2143	2243	2343
Mynydd Isa, Park Ave / Llewellyn Drive	0703	0733	0803	0833		03	33		1803	1849	1947	2047	2147	2247	2347
New Brighton, Rose & Crown	0707	0737	0807	0837		07	37		1807	1853	1950	2050	2150	2250	2350
Mold , Bus Station Stand 7	0712	0742	0812	0842	12	42	1812	1858	1955	2055	2155	2255	2355		

Mold/Yr Wyddgrug - Chester/Caer

via/drwy New Brighton, Mynydd Isa, Buckley/Bwcle, Drury, Hawarden, Broughton/Brychdyn, and/a Saltney

Sundays and Bank Holidays*

Dydd Sul a Gwyliau Cyhoeddus

Service Number/Rhif Gwasanaeth	4S	4S	4S		4S	4S		4S	4S	4S	4S	4S	4S	4S
Mold , Bus Station, Stand 5	0815	0935	1035	then of these mins / ynd'r munudau hyn	05	35	post each hour until / or ôl pob awr i'w tan	1705	1800	1900	2000	2100	2200	2300
New Brighton, Rose & Crown	0820	0940	1040		10	40		1710	1805	1905	2005	2105	2205	2305
Mynydd Isa, Mercia Inn	0823	0943	1043		13	43		1713	-	-	-	-	-	-
Mynydd Isa, Llewelyn Drive/Park Ave	-	-	-		-	-		-	1807	1907	2007	2107	2207	2307
Buckley Cross	0828	0948	1048		18	48		1718	1813	1913	2013	2113	2213	2313
Drury Parrot Inn	0834	0954	1054		24	54		1724	1818	1918	2018	2118	2218	2318
Hawarden High School	0841	1001	1101		31	01		1731	1825	1925	2025	2125	2225	2325
Broughton, Arriva Depot	0850	1010	1110		40	10		1740	1833	-	-	-	-	2333
Broughton Village Shops	0854	1014	1114		44	14		1744	1835	1935	2035	2135	2235	-
Broughton Airbus	0856	1016	1116		46	16		1746	1837	1937	2037	2137	2237	-
Bretton Lane End	0859	1019	1119		49	19		1749	1841	1941	2041	2141	2241	-
Saltney High Street	0903	1023	1123		53	23		1753	1844	1944	2044	2144	2244	-
Chester Argos Stop B	0915	1035	1135		05	35		1805	1854	1954	2054	2154	2254	-
Chester Railway Station	0917	1037	1137	07	37	1807	1856	1956	2056	2156	2256	-		

* Except Christmas Day, Boxing Day and New Year's Day / Heblaw Diwrnod Nadolig, Gwyl San Steffan a Dydd Calan

Sundays and Bank Holidays*

Dydd Sul a Gwyliau Cyhoeddus

Service Number/Rhif Gwasanaeth	4S	4S	4S		4S	4S		4S	4S	4S	4S	4S	4S	4S
Chester Railway Station	0920	1020	1050	then at these mins / yn at'r munudau hyn	20	50	past each hour until / ar ôl pob awr i'w tan	1720	1750	1900	2000	2100	2200	2300
Saltney High Street	0933	1033	1103		33	03		1733	1801	1911	2011	2111	2211	2311
Bretton Lane End	0941	1041	1111		41	11		1741	1809	1919	2019	2119	2219	2319
Broughton Retail Park	0942	1042	1112		42	12		1742	1810	1920	2020	2120	2220	2320
Broughton Airbus	0943	1043	1113		43	13		1743	1811	1922	2022	2122	2222	2322
Broughton Village Shops	0945	1045	1115		45	15		1745	1813	1924	2024	2124	2224	2324
Broughton, Arriva Depot	0950	1050	1120		50	20		1750	1818	-	-	-	-	-
Hawarden, High School	0958	1058	1128		58	28		1758	1825	1935	2035	2135	2235	2335
Hawarden Sycamore Lodge	1000	1100	1130		00	30		1800	1827	1937	2037	2137	2237	2337
Drury Parrot Inn	1003	1103	1133		03	33		1803	1830	1940	2040	2140	2240	2340
Buckley Cross	1010	1110	1140		10	40		1810	1837	1947	2047	2147	2247	2347
Mynydd Isa, Park Ave / Llewellyn Drive	1013	1113	1143		13	43		1813	1840	1950	2050	2150	2250	2350
New Brighton, Rose & Crown	1017	1117	1147		17	47		1817	1843	1953	2053	2153	2253	2353
Mold , Bus Station Stand 7	1022	1122	1152	22	52	1822	1848	1958	2058	2158	2258	2358		

* Except Christmas Day, Boxing Day and New Year's Day / Heblaw Diwrnod Nadolig, Gwyl San Steffan a Dydd Calan

Mold/Yr Wyddgrug - Chester/Caer

via/drwy Buckley/Bwcle, Ewloe, Hawarden/Penarlŷg and/a Broughton/Brychdyn

Arriva **X4**

Monday to Friday (except Bank Holidays)

Dydd Llun i Gwener (heblaw Gwyliau Cyhoeddus)

Service Number/Rhif Gwasanaeth	X4	X4	X4	X4	X4		X4	X4		X4	X4	X4	X4	X4	X4
Mold Bus Station	0638	0708	0738	0803	0848	then of these mins / ynd r munudau rym	18	48	post each hour until / ar ôl pob awr tan	1418	1448	1518	1548	1628	1708
Buckley Cross	0646	0717	0747	0812	0856		26	56		1426	1457	1527	1557	1637	1717
Ewloe Green School	0652	0724	0754	0819	0902		32	02		1432	1504	1534	1604	1644	1724
Hawarden Glynne Arms	0657	0730	0800	0825	0908		38	08		1438	1510	1540	1610	1651	1731
Broughton Arriva Depot	0703	0737	0807	0832	0914		44	14		1444	1517	1547	1617	1659	1739
Broughton Airbus	0708	0743	0812	0837	0919		49	19		1449	1522	1552	1622	1703	1743
Broughton Retail Park	0709	0745	0813	0838	0920		50	20		1450	1523	1553	1623	1704	1744
Chester Business Park	0723	0801	0826	0851	0933		03	33		1503	1536	1606	1636	1716	1756
Chester Railway Station	0734	0815	0840	0905	0946		16	46		1516	1550	1620	1650	1730	1810

Saturdays only

Dydd Sadwrn un nig

Service Number/Rhif Gwasanaeth	X4	X4	X4	X4	X4		X4	X4		X4	X4	X4	X4	X4	X4
Mold Bus Station	0648	0718	0748	0818	0848	then of these mins / ynd r munudau rym	18	48	post each hour until / ar ôl pob awr tan	1418	1448	1518	1548	1618	1648
Buckley Cross	0653	0723	0753	0823	0853		23	53		1423	1453	1523	1553	1623	1653
Ewloe Green School	0700	0730	0800	0830	0900		30	00		1430	1500	1530	1600	1630	1700
Hawarden Glynne Arms	0707	0737	0807	0837	0907		37	07		1437	1507	1537	1607	1637	1707
Broughton Arriva Depot	0714	0744	0814	0844	0914		44	14		1444	1514	1544	1614	1644	1714
Broughton Airbus	0719	0749	0819	0849	0919		49	19		1449	1519	1549	1619	1649	1719
Broughton Retail Park	0720	0750	0820	0850	0920		50	20		1450	1520	1550	1620	1650	1720
Chester Business Park	0733	0803	0833	0903	0933		03	33		1503	1533	1603	1633	1703	1733
Chester Railway Station	0746	0816	0846	0916	0946		16	46		1516	1546	1616	1646	1716	1746

Chester/Caer - Mold/Yr Wyddgrug

via/drwy Broughton/Brychdyn, Hawarden/Penarlâg, Ewloe, and/a Buckley/Bwcle

Arriva **X4**

Monday to Friday (except Bank Holidays)

Dydd Llun i Gwener (heblaw Gwyliau Cyhoeddus)

Service Number/Rhif Gwasanaeth	X4	X4	X4	X4	X4		X4	X4		X4	X4	X4	X4	X4	X4	X4	
Chester Railway Station	0650	0717	0747	0821	0855	then at these mins / yna'r munudau hyn	25	55	past each hour until / ar ôl pob awr tan	1425	1455	1525	1555	1625	1700	1740	1820
Chester Business Park	0701	0731	0800	0834	0908		38	08		1438	1513	1543	1613	1643	1717	1757	1837
Broughton Retail Park	0713	0744	0813	0847	0921		51	21		1451	1527	1557	1627	1657	1730	1810	1850
Broughton Airbus	0715	0745	0814	0848	0922		52	22		1452	1529	1559	1629	1659	1731	1811	1851
Broughton Arriva Depot	0719	0750	0819	0853	0927		57	27		1457	1534	1604	1634	1704	1736	1816	1856
Hawarden Glynne Arms	0724	0756	0825	0859	0933		03	33		1503	1540	1610	1640	1710	1741	1821	1901
Ewloe Green School	0729	0801	0831	0905	0939		09	39		1509	1545	1615	1645	1715	1746	1826	1906
Buckley Cross	0734	0807	0837	0911	0945		15	45		1515	1551	1621	1651	1721	1751	1831	1911
Mold Bus Station, Stand 4	0741	0823	0845	0919	0953		23	53		1523	1559	1629	1659	1729	1759	1839	1919

Saturdays only

Dydd Sadwrn un unig

Service Number/Rhif Gwasanaeth	X4	X4	X4	X4	X4		X4	X4		X4	X4	X4	X4	X4	X4
Chester Railway Station	0655	0725	0755	0825	0855	then at these mins / yna'r munudau hyn	25	55	past each hour until / ar ôl pob awr tan	1525	1555	1625	1655	1725	1755
Chester Business Park	0708	0738	0808	0838	0908		38	08		1538	1608	1638	1708	1738	1808
Broughton Retail Park	0721	0751	0821	0851	0921		51	21		1551	1621	1651	1721	1751	1821
Broughton Airbus	0722	0752	0822	0852	0922		52	22		1552	1622	1652	1722	1752	1822
Broughton Arriva Depot	0727	0757	0827	0857	0927		57	27		1557	1627	1657	1727	1757	1827
Hawarden Glynne Arms	0733	0803	0833	0903	0933		03	33		1603	1633	1703	1733	1803	1833
Ewloe Green School	0739	0809	0839	0909	0939		09	39		1609	1639	1709	1739	1809	1839
Buckley Cross	0745	0815	0845	0915	0945		15	45		1615	1645	1715	1745	1815	1845
Mold Bus Station, Stand 4	0753	0823	0853	0923	0953		23	53		1623	1653	1723	1753	1823	1853

Monday to Saturday (except Bank Holidays)

Dydd Llun i Sadwrn (heblaw Gwyliau Cyhoeddus)

Service Number/Rhif Gwasanaeth	6A	6	6	6	6	6	6	6A* VMC	6	6
Mold Bus Station Stand 2	0805	0930	1030	1130	1230	1330	1430	1545	1635	1735
Parc Hendy	-	0938	1038	1138	1238	1338	1438	-	1643	1743
Gwernymynydd School	0811	0943	1043	1143	1243	1343	1443	1551	1648	1748
Cadole Corner	0814	0946	1046	1146	1246	1346	1446	1554	1651	1751
Gwernaffield Hand Inn	0817	0949	1049	1149	1249	1349	1449	1557	1654	1754
Pantymwyn	0820	0952	1052	1152	1252	1352	1452	1600	1657	1757

Service Number/Rhif Gwasanaeth	6A SDO VMC	6A SSH	6	6	6	6	6	6	6	6A	6A	6A
Pantymwyn	0820	0825	0900	1000	1100	1200	1300	1400	1500	1605	1700	1800
Gwernaffield Hand Inn	0823	0828	0903	1003	1103	1203	1303	1403	1503	1608	1703	1803
Cadole Corner	0826	0831	0906	1006	1106	1206	1306	1406	1506	1611	1706	1806
Gwernymynydd School	0829	0834	0909	1009	1109	1209	1309	1409	1509	1614	1709	1809
Parc Hendy	-	-	0914	1014	1114	1214	1314	1414	1514	-	-	-
Mold Bus Station	0845	0842	0922	1022	1122	1222	1322	1422	1522	1622	1717	1817

Codes / SSH - Saturdays and School Holidays Only / Dydd Sadwrn a gwyliau ysgol unig

Codiau SDO - Dyddiau Ysgol yn unig / School Days only

VMC - Gweithredu heibio Gampus Yr Wyddgrug ar ddyddiau ysgol / Operates via Mold Campus on school days

Monday to Friday (School/College Days Only)

Dydd Llun i Gwener (Dyddiau Ysgol/Coleg yn unig)

Service Number/Rhif Gwasanaeth	7X 1 SDO/CDO	7X 2 SDO	7X 3 CDO
Manor Lane	0755	0755	-
Sandycroft Phoenix	0802	0802	-
Mancot Chapel	0808	0808	-
Mancot Mechanics Inn	0812	0812	-
Hawarden High School	0820	0820	-
Wood Lane	0821	-	0821
Burntwood Inn	0825	-	0825
St. David's Park	0828	-	0828
Aston Plough	0835	-	0835
Deeside College	0850	-	0850

Service Number/Rhif Gwasanaeth	7X 1 SDO/CDO	7X 2 SDO	7X 3 CDO
Hawarden High School	1520	1520	-
Manor Lane	1530	1530	-
Sandycroft Phoenix	1537	1537	-
Mancot Chapel	1543	1543	-
Mancot Mechanics Inn	1547	1547	-
Deeside College	1557	-	1615
Aston Plough	-	-	1628
St. David's Park	-	-	1635
Burntwood Inn	-	-	1638
Wood Lane bottom	-	-	1640

1 - When both Hawarden High School & Deeside College are open / Pan fydd Ysgol Uwchradd Penarlâg a Choleg Cambria ar agor

2 - When Hawarden High School is open but Deeside College is closed / Pan fydd Ysgol Uwchradd Penarlâg ar agor a Choleg Cambria ar gau

3 - When Hawarden High School is closed but Deeside College is open / Pan fydd Ysgol Uwchradd Penarlâg ar gau a Choleg Cambria ar agor

Sealand Manor - Mold/Yr Wyddgrug

via/drwy Connah's Quay and/a Northop Hall

Townlynx

8

Monday to Saturday (except Bank Holidays)

Dydd Llun i Sadwrn (heblaw Gwyliau Cyhoeddus)

Sealand Manor	0843	1025	1225	1425	1645
Queensferry ASDA	0850	1032	1232	1432	1652
Shotton Chester Road West S1	0857	1039	1239	1439	1659
Connah's Quay Boathouse	0901	1043	1243	1443	1703
Quay Shopping Centre (E)	0906	1048	1248	1448	1708
Northop Hall Boar's Head	0914	1056	1256	1456	1716
Northop Red Lion	0919	1101	1301	1501	1721
Mold Bus Station Stand 3	0928	1110	1310	1510	1730

Mold Bus Station Stand 3	0935	1130	1330	1600	1735
Northop Brook Street	0944	1139	1339	1609	1744
Northop Hall Boar's Head	0950	1145	1345	1615	1750
Quay Shopping Centre (E)	0957	1152	1352	1622	1757
Connah's Quay Boathouse	1002	1157	1357	1627	1802
Shotton Chester Road West S2	1006	1201	1401	1631	1806
Queensferry ASDA	1013	1208	1408	1638	1813
Sealand Manor	1020	1215	1415	1645	1820

Monday to Saturday (except Bank Holidays)

Dydd Llun i Sadwrn (heblaw Gwyliau Cyhoeddus)

Service Number/Rhif Gwasanaeth	9	X9	9	9	X9	9	X9	9	9	SSH X9	SDO/VMC 109
Mold Bus Station 3	0723	0840	-	-	-	-	-	-	-	1535	1545
Clwyd Theatr Cymru	0726	0843	-	-	-	-	-	-	-	-	-
Sychdyn, Cross Keys	0728	0845	-	-	-	-	-	-	-	1540	1550
Northop, Brook Street	0731	0848	-	-	-	-	-	-	-	1543	1553
Northop Hall, Boar's Head	0736	0853	-	-	-	-	-	1424	-	1548	-
Llwyni Drive, Sidney Hall Court	0748	0905	0920	1050	1120	1250	1320	1440	1550	1600	1608
Connah's Quay, Civic Centre	0754	0911	0926	1056	1126	1256	1326	1446	1556	1606	1613
Shotton Chester Road West	0756	0913	0928	1058	1128	1258	1358	1448	1558	1610	1615
Queensferry, Station Road	0759	-	0933	1103	-	1303	-	-	1603	-	-
Queensferry, ASDA	-	0918	-	-	1133	-	1333	1453	-	1615	1620
Green Lane East A548	0804	-	0938	1108	-	1308	-	-	1608	-	-
Countess Hospital / A5116	0817	-	0951	1121	-	1321	-	-	1621	-	-
Chester , Foregate Street	0828	-	1001	1131	-	1331	-	-	1631	-	-
Hawarden Glynne Arms	-	0923	-	-	1138	-	1338	-	-	1620	1625
Broughton Retail Park	-	0928	-	-	1143	-	1343	-	-	1625	1632
Bretton Village	-	0931	-	-	1147	-	1347	-	-	-	-
Higher Kinnerton Church	-	0937	-	-	1153	-	1353	-	-	-	-
Penyffordd War Memorial Institute	-	-	-	-	-	-	-	-	-	1632	1639
Hope Church	-	0943	-	-	1158	-	1358	-	-	1637	1644
Wrexham Maelor Hospital	-	0956	-	-	1211	-	1411	-	-	1650	1657
Wrexham Bus Station	-	1000	-	-	1215	-	1415	-	-	1655	1705

SSH - Saturdays and School Holidays Only/ Dydd Sadwrn a Gwyliau Ysgol yn unig

SDO - Schooldays Only / Dyddiau Ysgol yn unig

VMC - Via Mold Campus / heibio Ysgol Alun/Maes Garmon

Wrexham/Wreccsam - Chester/Caer - Mold/Yr Wyddgrug

via/drwy Hope, Broughton & Shotton (X9, 109) and/a Shotton & Countess Hospital (9)

Townlynx

9, X9, 109

Monday to Saturday (except Bank Holidays)

Dydd Llun i Sadwrn (heblaw Gwyliau Cyhoeddus)

Service Number/Rhif Gwasanaeth	SDO/VMC 109	SSH X9	9	9	X9	9	X9	9	SDO X9	SSH X9	9	9
Wrexham Bus Station	-	-	-	-	1020	-	1220	-	1420	1420	-	-
Wrexham Maelor Hospital	-	-	-	-	1024	-	1224	-	1424	1424	-	-
Hope Church	-	-	-	-	1037	-	1237	-	1437	1437	-	-
Higher Kinnerton Church	-	-	-	-	1041	-	1241	-	1441	1441	-	-
Bretton Village	-	-	-	-	1046	-	1246	-	1446	1446	-	-
Broughton Retail Park	-	-	-	-	1050	-	1250	-	1450	1450	-	-
Hawarden Glynne Arms	-	-	-	-	1055	-	1255	-	1455	1455	-	-
Chester , Foregate Street Stop E	-	-	0835	1005	-	1135	-	1335	-	-	-	1713
Countess Hospital / A5116	-	-	0844	1013	-	1143	-	1343	-	-	-	1721
Green Lane East A548	-	-	0858	1025	-	1155	-	1355	-	-	-	1733
Queensferry, ASDA	-	-	-	-	1100	-	1300	-	1500	1500	1505	-
Queensferry, Station Road	-	-	0904	1031	-	1201	-	1401	-	-	-	1740
Shotton Chester Road West	0759	0808	0908	1035	1105	1205	1305	1405	-	1505	1510	1744
Connah's Quay, Civic Centre	0802	0811	0911	1038	1108	1208	1308	1408	-	1508	1513	1753
Llwyni Drive, Sidney Hall Court	0807	0815	0915	1042	1112	1212	1312	1412	-	1512	1517	1758
Northop Hall, Boar's Head	-	-	-	-	-	-	-	1424	-	-	-	1809
Northop, Red Lion	0821	0826	-	-	-	-	-	-	-	1523	-	1814
Sychdyn, Cross Keys	0826	0829	-	-	-	-	-	-	-	1526	-	1817
Clwyd Theatr Cymru	-	0831	-	-	-	-	-	-	-	1528	-	1819
Mold Bus Station	0831	0834	-	-	-	-	-	-	-	1531	-	1822

SSH - Saturdays and School Holidays Only / Dydd Sadwrn a Gwyliau Ysgol yn unig

VMC - Via Mold Campus / heibio Ysgol Alun/Maes Garmon

SDO - Schooldays Only / Dyddiau Ysgol yn unig

Monday to Saturday (except Bank Holidays)

Dydd Llun i Sadwrn (heblaw Gwyliau Cyhoeddus)

Service Number/Rhif Gwasanaeth	10	10	10A	10	10A	10	10A	10	10A	10	10A	10	10A	10	10A
Holywell Bus Station	-	-	0658	-	0728	-	0758	-	28	-	58	-	1728	-	1758
Flint, Ship Inn	-	-	0712	-	0742	-	0812	-	42	-	12	-	1742	-	1812
Deeside College	-	-	0720	-	0750	-	0820	-	50	-	20	-	1750	-	1820
Quay Shopping Centre	0626	0656	-	0726	-	0756	-	26	-	56	-	1726	-	1756	-
Red Hall Precinct	0635	0705	-	0735	-	0805	-	35	-	05	-	1735	-	1805	-
Connahs Quay Boathouse	0640	0710	0725	0740	0755	0810	0825	40	55	10	25	1740	1755	1810	1825
Shotton Chester Road West	0642	0712	0727	0742	0757	0812	0827	42	57	12	27	1742	1757	1812	1827
Queensferry Station Road	0647	0717	0732	0747	0802	0817	0832	47	02	17	32	1747	1802	1817	1832
Garden City P.O.	0653	0723	0738	0753	0808	0823	0838	53	08	23	38	1753	1808	1823	1838
Chester Bus Interchange*	0708	0738	0753	0808	0823	0838	0853	08	23	38	53	1808	1823	1838	1853

then at these mins
/ yndd r munudau hyn

post each hour until
/ or of pob awr tan

	10	10	10	10	10
Quay Shopping Centre	1823	1853	1943	2043	2143
Red Hall Precinct	1831	1901	1948	2048	2148
Connah's Quay Boathouse	1835	1905	1951	2051	2151
Shotton Chester Road West	1837	1907	1953	2053	2153
Queensferry Station Road	1842	1912	1957	2057	2157
Garden City Post Office	1848	1918	2001	2101	2201
Chester Bus Interchange*	1903	1933	2014	2114	2214

* Please note that the opening of the new Chester Bus Interchange has been delayed until 5 June 2017. In the meantime this service will commence and terminate at the Bus Exchange in Princess Street until the new bus station is fully operational. / Mae agor Cyfnewidfa Bysiau Caer wedi ei ohirio tan 5 Mehefin 2017. Bydd y gwasanaeth hwn yn cychwyn ac yn gorffen yn y Gynnewidfa Fysiau ar Princess Street hyd nes bydd yr orsaf fysiau newydd yn gwbl weithredol.

Monday to Saturday (except Bank Holidays)

Dydd Llun i Sadwrn (heblaw Gwyliau Cyhoeddus)

Service Number/Rhif Gwasanaeth	10	10A	10	10A		10	10A	10	10A		10	10A	10	10A	10	10A	10
Chester Bus Interchange*	0708	0723	0738	0753	then at these mins /yndd rhwyddau hyn	08	23	38	53	post each hour until /or ôl pob awr tan	1708	1723	1738	1753	1808	1823	1845
Garden City Post Office	0725	0740	0755	0810		25	40	55	10		1725	1740	1755	1810	1825	1840	1900
Queensferry Station Road	0730	0745	0800	0815		30	45	00	15		1730	1745	1800	1815	1830	1845	1905
Shotton Chester Road West	0736	0751	0806	0821		36	51	06	21		1736	1751	1806	1821	1836	1851	1911
Connah's Quay Boathouse	0737	0752	0807	0822		37	52	07	22		1737	1752	1807	1822	1837	1852	1912
Red Hall Precinct	0742	-	0812	-		42	-	12	-		1742	-	1812	-	1842	-	1916
Quay Shopping Centre	0750	-	0820	-		50	-	20	-		1750	-	1820	-	1850	-	1925
Deeside College	-	0758	-	0828		-	58	-	28		-	1758	-	1828	-	1858	-
Flint McDonalds	-	0806	-	0836		-	06	-	36		-	1806	-	1836	-	1906	-
Holywell Bus Station	-	0820	-	0850		-	20	-	50		-	1820	-	1850	-	1920	-

	10	10	10	10
Chester Bus Interchange*	1915	2015	2115	2230
Garden City Post Office	1930	2028	2128	2243
Queensferry Station Road	1935	2031	2131	2246
Shotton Chester Road West	1941	2034	2134	2249
Connah's Quay Boathouse	1942	2035	2135	2250
Red Hall Precinct	1946	-	-	2253
Quay Shopping Centre	1955	2039	2139	2259

* Please note that the opening of the new Chester Bus Interchange has been delayed until 5 June 2017. In the meantime this service will commence and terminate at the Bus Exchange in Princess Street until the new bus station is fully operational. / Mae agor Cyfnewidfa Bysiau Caer wedi ei ohirio tan 5 Mehefin 2017. Bydd y gwasanaeth hwn yn cychwyn ac yn gorffen yn y Gyfnewidfa Fysiau ar Princess Street hyd nes bydd yr orsaf fysiau newydd yn gwbl weithredol.

Sundays and Bank Holidays

Dydd Sul a Gwyliau Cyhoeddus

Service Number/Rhif Gwasanaeth	10	10	10		10	10		10	10	10	10	10	10
Quay Shopping Centre	0913	1013	1043	then at these times / yno'r munudau hyn	13	43	post each hour until / or di'pob awr tan	1813	1843	1913	1943	2043	2143
Red Hall Precinct	0919	1019	1049		19	49		1819	1849	1919	1949	2049	2149
Connah's Quay Boathouse	0923	1023	1053		23	53		1823	1853	1922	1952	2052	2152
Shotton Chester Road West	0925	1025	1055		25	55		1825	1855	1923	1953	2053	2153
Queensferry Station Road	0930	1030	1100		30	00		1830	1900	1926	1956	2056	2156
Garden City Post Office	0935	1035	1105		35	05		1835	1905	1930	2000	2100	2200
Chester Bus Interchange*	0950	1050	1120		50	20		1850	1920	1943	2013	2113	2213

Service Number/Rhif Gwasanaeth	10	10	10		10	10		10	10	10	10	10	10		
Chester Bus Interchange*	1007	1107	1137	then at these times / yno'r munudau hyn	07	37	post each hour until / or di'pob awr tan	1807	1837	1907	1937	2015	2115	2230	
Garden City Post Office	1022	1122	1152		22	52		1822	1850	1920	1950	2028	2128	2243	
Queensferry Station Road	1026	1126	1156		26	56		1826	1853	1923	1953	2031	2131	2246	
Shotton Chester Road West	1032	1132	1202		32	02		1832	1856	1926	1956	2034	2134	2249	
Connah's Quay Boathouse	1033	1133	1203		33	03		1833	1857	1927	1957	2035	2135	2250	
Red Hall Precinct	-	-	-		-	-		-	-	-	-	-	-	-	2253
Quay Shopping Centre	1039	1139	1209		39	09		1839	1902	1932	2002	2040	2140	2259	

* Please note that the opening of the new Chester Bus Interchange has been delayed until 5 June 2017. In the meantime this service will commence and terminate at the Bus Exchange in Princess Street until the new bus station is fully operational. / Mae agor Cyfnewidfa Bysiau Caer wedi ei ohirio tan 5 Mehefin 2017. Bydd y gwasanaeth hwn yn cychwyn ac yn gorffen yn y Gyfnewidfa Fysiau ar Princess Street hyd nes bydd yr orsaf fysiau newydd yn gwbl weithredol.

Monday to Saturday (except Bank Holidays)

Dydd Llun i Sadwrn (heblaw Gwyliau Cyhoeddus)

Service Number/Rhif Gwasanaeth															
Holywell , Bus Station, Stand 1	0530	0550	0620	0650	0720	0750	0820	0850	0920	0950	1020	1050	1120	1150	1220
Bagillt, Post Office	0537	0558	0628	0658	0728	0758	0828	0858	0928	0958	1028	1058	1128	1158	1228
Flint Ship	0544	0605	0635	0705	0735	0805	0835	0905	0935	1005	1035	1105	1135	1205	1235
Kelsterton, Deeside College	0551	0613	0643	0713	0743	0813	0843	0913	0943	1013	1043	1113	1143	1213	1243
Connah's Quay, Boathouse	0557	0619	0649	0720	0750	0820	0850	0920	0950	1020	1050	1120	1150	1220	1250
Queensferry Solar Services	0602	0625	0655	0726	0756	0826	0856	0926	0956	1026	1056	1126	1156	1226	1256
Hawarden, Glynne Arms	0605	0628	0658	0730	0800	0830	0900	0930	1000	1030	1100	1130	1200	1230	1300
Broughton, Airbus	0610	0634	0704	0736	0806	0836	0906	0936	1006	1036	1106	1136	1206	1236	1306
Broughton Retail Park	0612	0635	0705	0738	0808	0838	0908	0938	1008	1038	1108	1138	1208	1238	1308
Bretton Lane End	0614	0638	0708	0741	0811	0841	0911	0941	1011	1041	1111	1141	1211	1241	1311
Saltney High Street	0618	0642	0712	0745	0815	0845	0915	0945	1015	1045	1115	1145	1215	1245	1315
Chester Railway Station	0635	0700	0730	0803	0835	0905	0933	1003	1033	1103	1133	1203	1233	1303	1333

Holywell , Bus Station, Stand 1	1250	1320	1350	1420	1450	1520	1550	1620	1650	1720	1750	1820
Bagillt, Post Office	1258	1328	1358	1428	1458	1528	1558	1628	1658	1728	1758	1828
Flint Ship	1305	1335	1405	1435	1505	1535	1605	1635	1705	1735	1805	1835
Kelsterton, Deeside College	1313	1343	1413	1443	1513	1543	1613	1643	1713	1743	1813	1843
Connah's Quay, Boathouse	1320	1350	1420	1450	1520	1550	1620	1650	1720	1750	1820	1850
Queensferry Solar Services	1326	1356	1426	1456	1526	1556	1626	1656	1726	1756	1826	1856
Hawarden, Glynne Arms	1330	1400	1430	1500	1530	1600	1630	1700	1730	1800	1830	1900
Broughton, Airbus	1336	1406	1436	1506	1536	1606	1636	1706	1736	1806	1836	1906
Broughton Retail Park	1338	1408	1438	1508	1538	1608	1638	1708	1738	1808	1838	1908
Bretton Lane End	1341	1411	1441	1511	1541	1611	1641	1711	1741	1811	1841	1911
Saltney High Street	1345	1415	1445	1515	1545	1615	1645	1715	1745	1815	1845	1915
Chester Railway Station	1403	1433	1503	1533	1603	1635	1705	1735	1803	1833	1903	1933

Connects with services 11F, 11G, 11M or 11X in Holywell for journeys to/from Rhyl, through tickets are available, passengers do not need to change buses.
/ Ceir cysylltiadau yn Nhrefynnon â gwasanaethau 11M, 11G, 11F ar gyfer teithiau i ac o'r Rhyl, mae tocynnau trwodd ar gael, ac nid oes ar deithwyr angen newid bws.

Monday to Saturday (except Bank Holidays)

Dydd Llun i Sadwrn (heblaw Gwyliau Cyhoeddus)

Service Number/Rhif Gwasanaeth																
Chester , Railway Station, S6	0645	0715	0745	0815	0845	0915	0945	1015	1045	1115	1145	1215	1245	1315	1345	
Saltney High Street	0659	0729	0800	0830	0859	0929	0959	1029	1059	1129	1159	1229	1259	1329	1359	
Bretton Lane End	0707	0737	0809	0839	0907	0937	1007	1037	1107	1137	1207	1237	1307	1337	1407	
Broughton Retail Park	0709	0739	0811	0841	0909	0939	1009	1039	1109	1139	1209	1239	1309	1339	1409	
Broughton Airbus	0710	0740	0812	0842	0910	0940	1010	1040	1110	1140	1210	1240	1310	1340	1410	
Hawarden, Gladstone Way	0717	0747	0819	0849	0917	0947	1017	1047	1117	1147	1217	1247	1317	1347	1417	
Queensferry Solar Services	0722	0752	0824	0854	0922	0952	1022	1052	1122	1152	1222	1252	1322	1352	1422	
Connah's Quay Boathouse	0728	0758	0830	0900	0928	0958	1028	1058	1128	1158	1228	1258	1328	1358	1428	
Kelsterton Deeside College	0735	0805	0837	0907	0935	1005	1035	1105	1135	1205	1235	1305	1335	1405	1435	
Flint McDonalds	0743	0813	0845	0915	0943	1013	1043	1113	1143	1213	1243	1313	1343	1413	1443	
Bagillt Post Office	0749	0819	0851	0921	0949	1019	1049	1119	1149	1219	1249	1319	1349	1419	1449	
Holywell Bus Station	0758	0828	0900	0930	0958	1028	1058	1128	1158	1228	1258	1328	1358	1428	1458	

Chester , Railway Station, S6	1415	1445	1515	1545	1615	1645	1715	1745	1815	1845
Saltney High Street	1429	1459	1529	1600	1630	1700	1730	1759	1829	1859
Bretton Lane End	1437	1507	1537	1609	1639	1709	1739	1807	1837	1907
Broughton Retail Par	1439	1509	1539	1611	1641	1711	1741	1809	1839	1909
Broughton Airbus	1440	1510	1540	1612	1642	1712	1742	1810	1840	1910
Hawarden, Gladstone Way	1447	1517	1547	1619	1649	1719	1749	1817	1847	1917
Queensferry Solar Services	1452	1522	1552	1624	1654	1724	1754	1822	1852	1922
Connah's Quay Boathouse	1458	1528	1558	1630	1700	1730	1800	1828	1858	1928
Kelsterton Deeside College	1505	1535	1605	1637	1707	1737	1807	1835	1905	1935
Flint McDonalds	1513	1543	1613	1645	1715	1745	1815	1843	1913	1943
Bagillt Post Office	1519	1549	1619	1651	1721	1751	1821	1849	1919	1949
Holywell Bus Station	1528	1558	1628	1700	1730	1800	1830	1858	1928	1958

Connects with services 11F, 11G, 11M or 11X in Holywell for journeys to/from Rhyl, through tickets are available, passengers do not need to change buses. / Ceir cysylltiadau yn Nhrefynnon â gwasanaethau 11M, 11G, 11F ar gyfer teithiau i ac o'r Rhyl, mae tocynnau trwodd ar gael, ac nid oes ar deithwyr angen newid bws.

Mold/Yr Wyddgrug - Holywell/Treffynnon - Chester/Caer (evening service)

via/drw y Flint/Y Fflint, Connah's Quay/Cei Connah, Queensferry, Mancot, Broughton/Brychdyn, Saltney

Arriva

11A

Monday to Saturday (except Bank Holidays)

Dydd Llun i Sadwrn (heblaw Gwyliau Cyhoeddus)

Service Number/Rhif Gwasanaeth									
Mold Bus Station, Stand 4	1945	-	2145						
Holywell Bus Station Stand 1	-	2030	-						
Flint Ship	2002	2044	2202						
Kelsterton, Deeside College	2009	2051	2209						
Connah's Quay Boathouse	2014	2057	2214						
Queensferry Solar Services	2019	2102	2219						
Mancot Chapel	2021	2104	2221						
Sandycroft Church	2022	2105	2222						
Broughton Retail Park	2028	2111	2228						
Bretton Lane End	2030	2113	2230						
Saltney High Street	2033	2117	2233						
Chester Railway Station	2045	2132	2245						
Chester Railway Station	1915	1945	2045	2145	2245				
Saltney High Street	1927	1957	2052	2157	2252				
Bretton Lane End	1934	2004	2057	2204	2257				
Broughton Retail Park	1935	2005	2058	2205	2258				
Sandycroft Church	1941	2011	2104	2211	2304				
Mancot Chapel	1942	2012	2105	2212	2305				
Queensferry Solar Services	1945	2015	2108	2215	2308				
Connah's Quay, Boathouse	1950	2020	2112	2220	2312				
Deeside College	1956	2026	2117	2226	2317				
Flint McDonalds	2003	2033	2125	2233	2325				
Mold Bus Station	-	-	2140	-	2340				
Holywell Bus Station	2017	2047	-	2247	-				

Connects with services 11F, 11G, 11M or 11X in Holywell for journeys to/from Rhyl, through tickets are available, passengers do not need to change buses.
/ Ceir cysylltiadau yn Nhrefynnon â gwasanaethau 11M, 11G, 11F ar gyfer teithiau i ac o'r Rhyl, mae tocynnau trwodd ar gael, ac nid oes ar deithwyr angen newid bws.

Sunday and Bank Holidays

Dydd Sul a Gwyliau Cyhoeddus

Service Number/Rhif Gwasanaeth	11A	11A	11A	11A	11A	11A	11A
Holywell Bus Station Stand 1	0835	1035	1235	1435	1635	1835	2030
Bagillt, Post Office	0843	1043	1243	1443	1643	1843	2037
Flint Ship	0850	1050	1250	1450	1650	1850	2044
Deeside College	0858	1058	1258	1458	1658	1858	2051
Connah's Quay, Boathouse	0905	1105	1305	1505	1705	1905	2057
Queensferry Solar Services Q2	0911	1111	1311	1511	1711	1911	2102
Mancot Chapel	0913	1113	1313	1513	1713	1913	2104
Sandycroft Church	0915	1115	1315	1515	1715	1915	2105
Broughton Retail Park	0924	1124	1324	1524	1724	1924	2111
Bretton Lane End	0926	1126	1326	1526	1726	1926	2113
Saltney High Street	0931	1131	1331	1531	1731	1931	2117
Chester , Railway Station, S6	0948	1148	1348	1548	1748	1948	2132

Connects with services 11F, 11G, 11M or 11X in Holywell for journeys to/from Rhyl, through tickets are available, passengers do not need to change buses.
/ Ceir cysylltiadau yn Nhrefynnon â gwasanaethau 11M, 11G, 11F ar gyfer teithiau i ac o'r Rhyl, mae tocynnau trwodd ar gael, ac nid oes ar deithwyr angen newid bws.

Sunday and Bank Holidays

Dydd Sul a Gwyliau Cyhoeddus

Service Number/Rhif Gwasanaeth	11A	11A	11A	11A	11A	11A	11A
Chester , Railway Station, S6	0955	1155	1355	1555	1755	1955	2145
Saltney High Street	1011	1211	1411	1611	1811	2009	2159
Bretton Lane End	1017	1217	1417	1617	1817	2014	2204
Broughton Retail Park	1018	1218	1418	1618	1818	2015	2205
Sandycroft Church	1026	1226	1426	1626	1826	2021	2211
Mancot Chapel	1028	1228	1428	1628	1828	2022	2212
Queensferry Solar Services Q1	1032	1232	1432	1632	1832	2025	2215
Connah's Quay, Boathouse	1038	1238	1438	1638	1838	2030	2220
Deeside College	1045	1245	1445	1645	1845	2036	2226
Flint McDonalds	1053	1253	1453	1653	1853	2043	2233
Bagillt, Post Office	1059	1259	1459	1659	1859	2049	2239
Holywell Bus Station	1108	1308	1508	1708	1908	2057	2247

Connects with services 11F, 11G, 11M or 11X in Holywell for journeys to/from Rhyl, through tickets are available, passengers do not need to change buses.
/ Ceir cysylltiadau yn Nhrefynnon â gwasanaethau 11M, 11G, 11F ar gyfer teithiau i ac o'r Rhyl, mae tocynnau trwodd ar gael, ac nid oes ar deithwyr angen newid bws.

Holywell/Treffynnon - Rhyl/Y Rhyl

via/drwy Prestatyn (11G, 11M) and/ac Flint/Y Fflint (11F)

Arriva

11F, 11G, 11M

Monday to Saturday (except Bank Holidays)

Dydd Llun i Sadwrn (heblaw Gwyliau Cyhoeddus)

Service Number/Rhif Gwasanaeth	11M	11G	11M	11G	11M	11G	11M	11G	11M	11G	11M	11G	11M	11G	11M
Holywell Bus Station Stand 3	-	0735	0805	0835	0905	0935	1005	1035	1105	1135	1205	1235	1305	1335	1405
Greenfield Packet House	-	0739	0810	0839	0910	0939	1010	1039	1110	1138	1210	1239	1310	1339	1410
Maes Pennant Shops	0717	-	0817	-	0917	-	1017	-	1117	-	1217	-	1317	-	1417
Mostyn Glan-y-don	-	0744	-	0844	-	0944	-	1044	-	1144	-	1244	-	1344	-
Ffynnongroyw	0725	0750	0825	0850	0925	0950	1025	1050	1125	1149	1225	1250	1325	1350	1425
Mostyn Road, The Bells Pub	0731	0756	0831	0856	0931	0956	1031	1056	1131	1156	1231	1256	1331	1356	1431
Gronant Nant y Gro	-	0801	-	0901	-	1001	-	1101	-	1201	-	1301	-	1401	-
Prestatyn Bus Station	0747	0817	0847	0917	0947	1017	1047	1117	1149	1219	1247	1317	1347	1417	1447
Ffrith Beach	0757	0827	0857	0927	0957	1027	1057	1127	1159	1229	1257	1327	1357	1427	1457
Rhyl Bus Station	0806	0836	0906	0936	1006	1036	1106	1136	1208	1238	1306	1336	1406	1436	1506

Service Number/Rhif Gwasanaeth	11G	11M	11G	11M	11G	11M	11G	11M	11G	11M	11F	11G	11M	11M	11M
Flint McDonalds	-	-	-	-	-	-	-	-	-	-	1935	-	-	-	-
Holywell Bus Station Stand 3	1435	1505	1535	1605	1635	1707	1737	1807	1837	1905	-	1935	2005	2055	2255
Greenfield Packet House	1439	1510	1539	1610	1639	1712	1740	1812	1840	1910	1940	1939	2010	2059	2259
Maes Pennant Shops	-	1517	-	1617	-	1719	-	1819	-	1917	-	-	2017	2105	2305
Mostyn Glan-y-don	1444	-	1544	-	1644	-	1746	-	1846	-	1944	1944	-	-	-
Ffynnongroyw	1450	1525	1550	1625	1650	1727	1751	1827	1851	1925	-	1949	2025	2113	2313
Mostyn Road, The Bells Pub	1456	1531	1556	1631	1656	1733	1758	1833	1858	1931	1955	1956	2031	2119	2319
Gronant Nant y Gro	1501	-	1601	-	1701	-	1803	-	1903	-	-	2001	-	-	-
Prestatyn Bus Station	1517	1547	1617	1647	1717	1749	1819	1849	1919	1947	-	2017	2047	2134	2334
Ffrith Beach	1527	1557	1627	1657	1727	1759	1829	1859	1929	1957	-	2027	2057	2144	2344
Rhyl Bus Station	1536	1606	1636	1706	1736	1808	1838	1908	1938	2006	2010	2036	2106	2153	2353

Connects with services 11, 11A in Holywell for journeys to/from Chester; through tickets are available, passengers do not need to change buses. / Ceir cysylltiadau yn Nhrefynnon â gwasanaethau 11, 11A ar gyfer teithiau i ac o'r Caer, mae tocynnau trwodd ar gael, ac nid oes ar deithwyr angen newid bws.

Rhyl/Y Rhyl - Holywell/Treffynnon

via/drwy Prestatyn (11G, 11M) and/ac Flint/Y Fflint (11F)

Arriva

11F, 11G, 11M, 11X

Monday to Saturday (except Bank Holidays)

Dydd Llun i Sadwrn (heblaw Gwyliau Cyhoeddus)

Service Number/Rhif Gwasanaeth	11X	11X	11G	11M	11G	11M	11X	11G	11F	11G	11M	11G	11M	11G	11M
Rhyl Bus Station	0450	0510	0515	0545	0615	0645	0655	0715	0745	0815	0845	0915	0945	1015	1045
Ffrith Beach	0500	0520	-	-	-	-	0705	-	-	-	-	-	-	-	-
Ffrith Hotel	-	-	0525	0555	0625	0655	-	0725	0755	0827	0855	0925	0955	1025	1055
Prestatyn, Bus Station	-	-	0534	0604	0634	0704	-	0734	0804	0836	0904	0934	1004	1034	1104
Gronant Nant y Gro	-	-	0549	-	0649	-	-	0749	-	0851	-	0949	-	1049	-
Talacre Station Road Turn	0510	0530	0554	0619	0654	0719	0715	0754	0819	0856	0919	0954	1019	1054	1119
Ffynnongroyw	-	-	0557	0623	0657	0723	-	0757	0823	0900	0923	0957	1023	1057	1123
Maes Pennant Shops	-	-	-	0632	-	0732	-	-	0832	-	0932	-	1032	-	1132
Mostyn Glan-y-don	0516	0536	0604	-	0704	-	0721	0804	-	0906	-	1004	-	1104	-
Greenfield Packet House	0520	0540	0609	0639	0709	0739	0725	0809	0839	0911	0939	1009	1039	1109	1139
Holywell , Bus Station, Stand 1	0525	0545	0614	0644	0714	0744	0730	0814	0844	0916	0944	1014	1044	1114	1144

Service Number/Rhif Gwasanaeth	11G	11M	11G	11M	11G	11M	11G	11M	11G	11M	11G	11M	11G	11M	11F	11M	11M
Rhyl Bus Station	1115	1145	1215	1245	1315	1345	1415	1445	1515	1545	1615	1645	1715	1745	1815	1930	2230
Ffrith Hotel	1125	1155	1225	1255	1325	1355	1425	1455	1527	1557	1625	1655	1725	1755	1825	1939	2239
Prestatyn, Bus Station	1134	1204	1234	1304	1334	1404	1434	1504	1536	1606	1634	1704	1734	1804	1834	1947	2247
Gronant Nant y Gro	1149	-	1249	-	1349	-	1449	-	1551	-	1649	-	1749	-	1849	-	-
Talacre Station Road Turn	1154	1219	1254	1319	1354	1419	1454	1519	1556	1621	1654	1719	1754	1819	1854	2002	2302
Ffynnongroyw	1157	1223	1257	1323	1357	1423	1457	1523	1600	1625	1657	1723	1757	1823	1857	2006	2306
Maes Pennant Shops	-	1232	-	1332	-	1432	-	1532	-	1634	-	1732	-	1832	-	2014	2314
Mostyn Glan-y-don	1204	-	1304	-	1404	-	1504	-	1606	-	1704	-	1804	-	1904	-	-
Greenfield Packet House	1209	1239	1309	1339	1409	1439	1509	1539	1611	1640	1709	1739	1809	1839	1909	2020	2320
Holywell , Bus Station, Stand 1	1214	1244	1314	1344	1414	1444	1514	1544	1616	1646	1714	1744	1814	1844	1914	2025	2325
Flint Ship	-	-	-	-	-	-	-	-	-	-	-	-	-	-	1858	1928	-

Connects with services 11, 11A in Holywell for journeys to/from Chester, through tickets are available, passengers do not need to change buses. / Ceir cysylltiadau yn Nhrefynnon â gwasanaethau 11, 11A ar gyfer teithiau i ac o'r Caer, mae tocynnau trwodd ar gael, ac nid oes ar deithwyr angen newid bws.

Sunday and Bank Holidays

Dydd Sul a Gwyliau Cyhoeddus

Service Number/Rhif Gwasanaeth	11M TY	11M TY	11M TY	11M TY	11M TY	11M TY	11M TY	11M TY
Holywell Bus Station Stand 3	0915	1115	1315	1515	1715	1915	2105	2255
Greenfield Packet House	0920	1120	1320	1520	1720	1920	2109	2259
Maes Pennant Shops	0927	1127	1327	1527	1727	1927	2115	2305
Ffynnongroyw Crown Hotel	0935	1135	1335	1535	1735	1935	2123	2313
Talacre Station Road Turn	0938	1138	1338	1538	1738	1938	2126	2316
Prestatyn Bus Station	0957	1157	1357	1557	1757	1957	2144	2334
Ffrith Beach	1007	1207	1407	1607	1807	2007	2154	2344
Rhyl Bus Station	1016	1216	1416	1616	1816	2016	2203	2353

Service Number/Rhif Gwasanaeth	11M TY	11X TY	11M TY	11M TY	11M TY	11M TY	11M TY	11M TY	11M TY
Rhyl Bus Station	0730	0830	0930	1130	1330	1530	1730	1930	2230
Ffrith Beach	-	0839	-	-	-	-	-	-	-
Ffrith Hotel	0740	-	0940	1140	1340	1540	1740	1939	2239
Prestatyn, Bus Station	0749	-	0949	1149	1349	1549	1749	1947	2247
Talacre Station Road End	0804	0850	1004	1204	1404	1604	1804	2002	2302
Ffynnongroyw	0808	-	1008	1208	1408	1608	1808	2006	2306
Maes Pennant Shops	0817	-	1017	1217	1417	1617	1817	2014	2314
Glan-y-don, Mostyn Garage	-	0856	-	-	-	-	-	-	-
Greenfield, Packet House	0824	0900	1024	1224	1424	1624	1824	2020	2320
Holywell Bus Station	0829	0905	1029	1229	1429	1629	1829	2025	2325

Connects with services 11, 11A in Holywell for journeys to/from Chester, through tickets are available, passengers do not need to change buses. / Ceir cysylltiadau yn Nhrefynnon â gwasanaethau 11, 11A ar gyfer teithiau i ac o'r Caer, mae tocynnau trwodd ar gael, ac nid oes ar deithwyr angen newid bws.

40 **TY** - Gweithredir heibio Tyn-y-Morfa/Silver Birch / operates via Tyn-y-Morfa/Silver Birch.

Connah's Quay/Cei Connah - Chester/Caer

- via/drwy Shotton, Mancot, Sandycroft, Broughton

Arriva **12**

Monday to Saturday (except Bank Holidays)

Dydd Llun i Sadwrn (heblaw Gwyliau Cyhoeddus)

Service Number/Rhif Gwasanaeth	12	12	12	12	12	12	12	12	12	12	12	12
Connah's Quay Shopping Centre	0605	0655	0725	0755	0825	0914	0944	1014	1044	1129	1159	1229
Connah's Quay Boathouse	0611	0701	0731	0801	0831	0920	0950	1020	1050	1135	1205	1235
Shotton, Ash Grove	0614	0704	0734	0804	0834	0923	0953	1023	1053	1138	1208	1238
Deeside Community Hospital	0622	0712	0742	0812	0842	0930	1000	1030	1100	1145	1215	1245
Queensferry, Asda	0626	0716	0746	0816	0846	0933	1003	1033	1103	1148	1218	1248
Mechanics' Arms	0629	0719	0749	0819	0849	0935	1005	1035	1105	1150	1220	1250
Mancot Chapel	0632	0722	0752	0822	0852	0938	1008	1038	1108	1153	1223	1253
Sandycroft, School	0634	0724	0754	0824	0854	0940	1010	1040	1110	1155	1225	1255
Sandycroft Bridge Inn	0637	0727	0757	0827	0857	0942	1012	1042	1112	1157	1227	1257
Broughton Arriva Depot	0645	0735	0805	0835	0905	0950	1020	1050	1120	1205	1235	1305
Broughton Retail Park	0651	0741	0811	0841	0911	0956	1026	1056	1126	1211	1241	1311
Chester Argos Stop B	0711	0801	0831	0901	0931	1016	1046	1116	1146	1231	1301	1331

Service Number/Rhif Gwasanaeth	12	12	12	12	12	12	12	12	12	12	12	12
Connah's Quay Shopping Centre	1259	1344	1414	1444	1514	1559	1629	1659	1729	1814	1844	1914
Connah's Quay Boathouse	1305	1350	1420	1450	1520	1605	1635	1705	1735	1820	1850	1920
Shotton, Ash Grove	1308	1353	1423	1453	1523	1608	1638	1708	1738	1823	1853	1923
Deeside Community Hospital	1315	1400	1430	1500	1530	1615	1645	1715	1745	1830	1900	1930
Queensferry, Asda	1318	1403	1433	1503	1533	1618	1648	1718	1748	1833	1903	1933
Mechanics' Arms	1320	1405	1435	1505	1535	1620	1650	1720	1750	1835	1905	1935
Mancot Chapel	1323	1408	1438	1508	1538	1623	1653	1723	1753	1838	1908	1938
Sandycroft, School	1325	1410	1440	1510	1540	1625	1655	1725	1755	1840	1910	1940
Sandycroft Bridge Inn	1327	1412	1442	1512	1542	1627	1657	1727	1757	1842	1912	1942
Broughton Arriva Depot	1335	1420	1450	1520	1550	1635	1705	1735	1805	1850	1920	1950
Broughton Retail Park	1341	1426	1456	1526	1556	1641	1711	1741	1811	1856	-	-
Chester Argos Stop B	1401	1446	1516	1546	1616	1701	1731	1801	1831	1916	-	-

Chester/Caer - Connah's Quay

- via/drwy Broughton, Sandycroft, Mancot, Shotton

Arriva

12

Monday to Saturday (except Bank Holidays)

Dydd Llun i Sadwrn (heblaw Gwyliau Cyhoeddus)

Service Number/Rhif Gwasanaeth	12	12	12	12	12	12	12	12	12	12	12	12
Chester Argos Stop B	0648	0718	0808	0838	0908	0934	1019	1049	1119	1149	1234	1304
Broughton Retail Park	0706	0736	0826	0856	0926	0954	1039	1109	1139	1209	1254	1324
Broughton Arriva Depot	0712	0742	0832	0902	0932	1000	1045	1115	1145	1215	1300	1330
Sandycroft Bridge Inn	0718	0748	0838	0908	0938	1006	1051	1121	1151	1221	1306	1336
Sandycroft School	0721	0751	0841	0911	0941	1009	1054	1124	1154	1224	1309	1339
Mancot Chapel	0723	0753	0843	0913	0943	1011	1056	1126	1156	1226	1311	1341
Mechanics' Arms	0726	0756	0846	0916	0946	1014	1059	1129	1159	1229	1314	1344
Queensferry Asda	0729	0759	0849	0919	0949	1017	1102	1132	1202	1232	1317	1347
Deeside Community Hospital	0734	0804	0854	0924	0954	1022	1107	1137	1207	1237	1322	1352
Shotton Ash Grove	0739	0809	0859	0929	0959	1027	1112	1142	1212	1242	1327	1357
Connah's Quay Boathouse	0741	0811	0901	0931	1001	1029	1114	1144	1214	1244	1329	1359
Connah's Quay Shopping Centre	0746	0816	0906	0936	1006	1036	1121	1151	1221	1251	1336	1406

Service Number/Rhif Gwasanaeth	12	12	12	12	12	12	12	12	12	12	12
Chester Argos Stop B	1334	1404	1449	1519	1549	1619	1704	1734	1804	1834	1919
Broughton Retail Park	1354	1424	1509	1539	1609	1639	1724	1752	1822	1852	1937
Broughton Arriva Depot	1400	1430	1515	1545	1615	1645	1730	1758	1828	1858	1943
Sandycroft Bridge Inn	1406	1436	1521	1551	1621	1651	1736	1804	1834	-	-
Sandycroft School	1409	1439	1524	1554	1624	1654	1739	1807	1837	-	-
Mancot Chapel	1411	1441	1526	1556	1626	1656	1741	1809	1839	-	-
Mechanics' Arms	1414	1444	1529	1559	1629	1659	1744	1812	1842	-	-
Queensferry Asda	1417	1447	1532	1602	1632	1702	1747	1815	1845	-	-
Deeside Community Hospital	1422	1452	1537	1607	1637	1707	1752	1820	1850	-	-
Shotton Ash Grove	1427	1457	1542	1612	1642	1712	1757	1825	1855	-	-
Connah's Quay Boathouse	1429	1459	1544	1614	1644	1714	1759	1827	1857	-	-
Connah's Quay Shopping Centre	1436	1506	1551	1621	1651	1721	1806	1832	1902	-	-

Monday to Saturday (except Bank Holidays)

Dydd Llun i Sadwrn (heblaw Gwyliau Cyhoeddus)

Service Number/Rhif Gwasanaeth	P&O SDO D14	LJ 14	LJ 14	LJ 14	P&O SDO C14	LJ 14	LJ 14
Mold Alun School	-	-	-	-	1535	-	-
Mold Bus Station Stand 1	0745	0845	1045	1315	1545	1545	1730
Rhydymwyn Old Station	0750	0850	1050	1320	-	1550	1735
Nannerch Cross Foxes	-	-	-	-	-	-	R
Lixwm Council Houses	0801	0900	1100	1330	1600	1600	R
Caerwys Square	0813	0912	1112	1342	1605	1612	1757
Afonwen Pwllgwyn	0816	0915	1115	1345	-	1615	1800
Bodfari Forge Shop	0820	0919	1119	1349	-	1619	1804
Waen Aberwheeler	-	0922	1122	1352	-	1622	R
Denbigh High School	0830	-	-	-	-	-	-
Denbigh Lenten Pool	0835	0935	1135	1405	-	1635	1817

Monday to Saturday (except Bank Holidays)

Dydd Llun i Sadwrn (heblaw Gwyliau Cyhoeddus)

Service Number/Rhif Gwasanaeth	P&O SDO C14	LJ SDO 14	LJ 14	LJ 14	LJ 14	P&O SDO D14	LJ 14
Denbigh Lenten Pool	-	0745	0940	1140	1410	1535	1640
Denbigh High School	-	-	-	-	-	1540	-
Waen Aberwheeler	-	-	0953	1153	1423	-	1653
Bodfari Forge Shop	-	0755	0955	1155	1425	1551	1655
Afonwen Pwllgwyn	-	0759	0959	1159	1429	1555	1659
Caerwys Square	0810	0804	1004	1204	1434	1601	1704
Lixwm Council Houses	0815	0813	1013	1213	1443	1611	1713
Nannerch Cross Foxes	-	0816	1016	1216	1446	-	1716
Rhydymwyn Old Station	-	0823	1023	1223	1453	1619	1723
Mold Bus Station	0830	0829	1029	1229	1459	1624	1729
Mold Alun School	0835	-	-	-	-	-	-

SDO - School Days Only & Operates via Mold Campus/ Dyddiau ysgol yn unig ac heibio ysgol Uwchradd Yr Wyddgrug

R - Passengers intending to travel to this point may inform the driver at the time of travel / Gall teithwyr sy'n bwriadu teithio i/o'r man hon hysbysu'r gyrrwr ar y daith

LJ - Llew Jones

P&O - P&O Lloyd

Monday to Friday (except Bank Holidays)

Dydd Llun i Gwener (heblaw Gwyliau Cyhoeddus)

Service Number/Rhif Gwasanaeth				HH SDO		
Pen-y-Maes Wood Lane	-	0943	1143	-	-	-
Holywell Bus Station Stand 4	-	0950	1150	1522	1522	1650
Carmel Old Post Office	-	0954	1154	1526	1526	1654
Gorsedd Druid Inn	-	0956	1156	1528	1528	1656
Caerwys Square	-	1005	1205	1541	1541	1705

Service Number/Rhif Gwasanaeth	HH SDO					
Caerwys Square	-	1020	1220	1600	1600	1710
Gorsedd Druid Inn	-	1029	1229	1609	1609	1719
Carmel Old Post Office	0810	1031	1231	1611	1611	1721
Holywell Bus Station Stand 4	0814	1035	1235	1615	1615	1725
Pen-y-Maes Wood Lane	-	1040	1240	-	-	1730

SDO - School days / Dyddiau Ysgol yn unig

HH - Operates via Holywell High / Heibio Ysgol Uwchradd Treffynnon

Saturdays only

Dydd Sadwrn yn unig

Service Number/Rhif Gwasanaeth				
Pen-y-Maes Wood Lane	0943	1143	1243	
Holywell Bus Station Stand 4	0950	1150	1248	
Carmel, Old Post Office	0954	1154	-	
Gorsedd Druid Inn	0956	1156	-	
Caerwys Square	1005	1205	-	
Afonwen Pwllgwyn	1008	1208	-	
Bodfari Forge Shop	1012	1212	-	
Denbigh Lenten Pool	1023	1223		

Denbigh Lenten Pool	-	1030	-	1230
Bodfari Forge Shop	-	1041	-	1241
Afonwen Pwllgwyn	-	1045	-	1245
Caerwys Square	0920	1050	-	1250
Gorsedd Druid Inn	0929	1059	-	1259
Carmel, Old Post Office	0931	1101	-	1301
Holywell Bus Station Stand 4	0935	1105	1135	1305
Pen-y-Maes Wood Lane	0940	-	1140	-

Monday to Saturday (except Bank Holidays)

Dydd Llun i Sadwrn (heblaw Gwyliau Cyhoeddus)

Service Number/Rhif Gwasanaeth			NS	S
Pen-y-Maes Wood Lane	0843	1043	1243	-
Holywell Bus Stn Stand 4	0850	1050	1250	1306
Carmel Old Post Office	0854	1054	1254	1310
Gorsedd Druid Inn	0856	1056	1256	1312
Brynford Crossroads	0901	1101	1301	1317
Ysceifog	R	R	R	R
Lixwm Garage	0907	1107	1307	1323
Rhesycae	R	R	R	R
Lixwm Council Houses	0909	1109	1309	1326
Nannerch Cross Foxes	0913	1113	1313	1330
Cilcain Maes Cilan	0922	1122	1322	-
Rhydymwyn Llys Alun	0932	1132	1332	-
Rhydymwyn Garage	0933	1133	1333	1339
Mold Bus Station	0938	1138	1338	1344

NS - Not Saturday / Dim ar ddydd Sadwrn

S - Saturdays only / Dydd Sadwrn yn unig

R - Passengers intending to travel to this point may inform the driver at the time of travel or by booking in advance by calling 01352 710682 from 0800 - 1700 Mondays to Fridays (please allow a minimum of two hours notice for bookings) / Gall teithwyr sy'n bwriadu trafaelio i/o'r man hon hysbysu'r gymwr ar y daith neu bwcio drwy ffonio 01352 710682 ymlaen llaw rhwng 0800 ac 1700 o ddydd Llun i Gwener (rhowch o leiaf 2 awr o rybudd cyn teithio os gwelwch yn dda)

Monday to Saturday (except Bank Holidays)

Dydd Llun i Sadwrn (heblaw Gwyliau Cyhoeddus)

Service Number/Rhif Gwasanaeth	NS	NS	S	NS	S	
Mold Bus Station Stand 1	-	0948	0948	1148	1148	1348
Rhydymwyn Garage	-	0953	0953	1153	1152	1352
Rhydymwyn Llys Alun	-	0954	0954	1154	1154	1354
Cilcain Maes Cilan	-	1004	1004	1204	1204	1404
Nannerch Cross Foxes	-	1013	1013	1213	1213	1413
Lixwm Council Houses	0916	1016	1016	1216	1216	1416
Rhesycae	R	R	R	R	R	R
Lixwm Garage	0919	1019	1019	1219	1219	1419
Ysceiflog	R	R	R	R	R	R
Brynford Crossroads	0923	1023	1023	1223	1223	1423
Gorsedd Druid Inn	0929	1029	1029	1229	1229	-
Carmel Old Post Office	0931	1031	1031	1231	1231	-
Holywell Bus Stn Stand 4	0935	1035	1035	1235	1235	1428
Pen-y-Maes Wood Lane	0940	-	1040	-	1240	-

NS - Not Saturday / Dim ar ddydd Sadwrn

S - Saturdays only / Dydd Sadwrn yn unig

R - Passengers intending to travel to this point may inform the driver at the time of travel or by booking in advance by calling 01352 710682 from 0800 - 1700 Mondays to Fridays (please allow a minimum of two hours notice for bookings) / Gall teithwyr sy'n bwriadu trafaelio i/o'r man hon hysbysu'r gyrrwr ar y daith neu bwcio drwy ffonio 01352 710682 ymlaen llaw rhwng 0800 ac 1700 o ddydd Llun i Gwener (rhowch o leiaf 2 awr o rybudd cyn teithio os gwelwch yn dda)

Monday to Friday (except Bank Holidays)

Dydd Llun i Gwener (heblaw Gwyliau Cyhoeddus)

Service Number/Rhif Gwasanaeth																		
Chester , Railway Station	-	-	0613	0641	-	-	-	-	-	-	-	-	-	-	-	-	-	
Chester, Bus Interchange*	-	-	0616	0644	0656	0709	0720	0730	0740	0750	0805	0816	0834	0849	0904	0919	0934	0949
Handbridge, Parish Church	-	-	0626	0654	0706	0719	0730	0740	0750	0800	0816	0827	0845	0900	0915	0930	0945	1000
Lache , Cliveden Road shops	0534	0604	0634	0702	0714	0727	0738	0748	0758	0808	0824	0835	0853	0908	0923	0938	0953	1008
Saltney, Sandy Lane, Community Centre arr	0541	0611	0641	0709	0721	0734	0745	0755	0805	0815	0834	0845	0903	0918	0931	0948	1003	1018
Saltney, Sandy Lane, Community Centre dep	0541	0611	0641	0709	0721	0734	0745	0755	0805	0818	0834	0845	0903	0918	0931	0948	1003	1018
Lache , Cliveden Road shops	0551	0621	0651	0719	0731	0744	0756	0809	0819	0830	0846	0856	0911	0926	0943	0956	1011	1026
Handbridge, Parish Church	0559	0629	0659	0727	0739	0752	0804	0818	0828	0840	0856	0905	0919	0934	0950	1004	1019	1034
Chester Bus Interchange*	-	-	0708	0736	0749	0802	0814	0830	0840	0852	0908	0917	0929	0944	0959	1014	1029	1044
Chester, Foregate Street	0605	0635	-	-	-	-	-	-	-	-	-	-	-	-	-	-	-	-
Chester , Railway Station	0608	0638	-	-	-	-	-	-	-	-	-	-	-	-	-	-	-	-

									SHO	SDO	SHO	SDO					
Chester , Bus Interchange*	1004	1019	1034	1049	then at these times / yr ar hysbysu'r amser	04	19	34	49	post each hour until / ar ôl pob awr tan	1500	1500	1515	1515	1534	1546	1558
Handbridge, Parish Church	1015	1030	1045	1100		15	30	45	00		1511	1517	1526	1530	1545	1557	1609
Lache , Cliveden Road shops	1023	1038	1053	1108		23	38	53	08		1519	1527	1534	1541	1553	1605	1617
Saltney, Sandy Lane, Community Centre arr	1033	1048	1103	1118		33	48	03	18		1529	1536	1544	1550	1603	1615	1627
Saltney, Sandy Lane, Community Centre dep	1033	1048	1103	1118		33	48	03	18		1533	1538	1548	1553	1603	1615	1627
Lache , Cliveden Road shops	1041	1056	1111	1126		41	56	11	26		1541	1546	1556	1601	1611	1623	1635
Handbridge, Parish Church	1049	1104	1119	1134		49	04	19	34		1549	1554	1604	1609	1619	1631	1643
Chester , Bus Interchange*	1059	1114	1129	1144	59	14	29	44	1559	1605	1614	1620	1629	1641	1653		

SHO - School Holidays Only / Gwyliau Ysgol yn unig **SDO** - Dyddiau Ysgol yn unig / School Days only

*Please note that the opening of the new Chester Bus Interchange has been delayed until 5 June 2017. In the meantime this service will commence and terminate in Foregate Street until the new bus station is fully operational. / Mae agor Cyfnewidfa Bysiau Caer wedi ei ohirio tan 5 Mehefin 2017. Bydd y gwasanaeth hwn yn cychwyn ac yn gorffen yn y Foregate Street hyd nes bydd yr orsaf fysiau newydd yn gwbl weithredol.

Monday to Friday (except Bank Holidays)

Dydd Llun i Gwener (heblaw Gwyliau Cyhoeddus)

Chester, Bus Interchange*	1610	1622	1634	1646	1658	1710	1719	1735	1750	1805	1820	1850	1915	2000	2045
Handbridge, Parish Church	1621	1633	1645	1657	1709	1721	1730	1746	1801	1815	1831	1901	1924	2009	2054
Lache, Cliveden Road shops	1629	1641	1653	1705	1717	1729	1738	1754	1809	1822	1838	1908	1929	2014	2059
Saltney, Sandy Lane, Community Centre arr	1639	1651	1703	1715	1727	1739	1748	1804	1819	1832	1848	1918	1937	2022	2107
Saltney, Sandy Lane, Community Centre dep	1639	1651	1703	1715	1727	1739	1748	1805	1820	1833	1849	1919	1938	2023	2108
Lache, Cliveden Road shops	1647	1659	1711	1723	1735	1747	1756	1813	1826	1839	1855	1925	1944	2029	2114
Handbridge, Parish Church	1655	1707	1719	1731	1743	1755	1804	1821	1834	1847	1903	1933	1952	2037	2122
Chester, Bus Interchange*	1705	1717	1729	1741	1753	1805	1814	1831	1843	1856	1912	1942	2001	2046	2131

Saturdays only

Dydd Sadwrn yn unig

Chester, Bus Interchange*	0615	0645	0715	0745	0815	0830	0845	0900	then at these times / yna'n rhifynau hyn	15	30	45	00	post each hour until / or ôl pob awr tan	1715	1730	1745
Handbridge, Parish Church	0626	0656	0726	0756	0826	0842	0857	0912		27	42	57	12		1727	1742	1757
Lache, Cliveden Road shops	0634	0704	0734	0804	0834	0850	0905	0920		35	50	05	20		1735	1750	1805
Saltney, Sandy Lane, Community Centre arr	0644	0714	0744	0814	0844	0900	0915	0930		45	00	15	30		1745	1800	1815
Saltney, Sandy Lane, Community Centre dep	0644	0714	0744	0814	0844	0900	0915	0930		45	00	15	30		1745	1800	1815
Lache, Cliveden Road shops	0651	0721	0751	0821	0851	0908	0923	0938		53	08	23	38		1753	1808	1821
Handbridge, Parish Church	0659	0729	0759	0829	0859	0916	0931	0946	01	16	31	46	1801	1816	1829		
Chester, Bus Interchange*	0709	0739	0809	0839	0909	0926	0941	0956	11	26	41	56	1811	1826	1839		

*Please note that the opening of the new Chester Bus Interchange has been delayed until 5 June 2017. In the meantime this service will commence and terminate in Foregate Street until the new bus station is fully operational. / Mae agor Cyfnewidfa Bysiau Caer wedi ei ohirio tan 5 Mehefin 2017. Bydd y gwasanaeth hwn yn cychwyn ac yn gorffen yn y Foregate Street hyd nes bydd yr orsaf fysiau newydd yn gwbl weithredol.

Saturdays only

Dydd Sadwrn yn unig

Service Number/Rhif Gwasanaeth

Chester, Bus Interchange*	1800	1815	1845	1915	2000	2045	2205	2320
Handbridge, Parish Church	1811	1827	1857	1925	2010	2055	2215	2330
Lache, Cliveden Road shops	1818	1834	1904	1930	2015	2100	2220	2335
Saltney, Sandy Lane, Community Centre arr	1828	1844	1914	1938	2023	2108	2228	2343
Saltney, Sandy Lane, Community Centre dep	1828	1844	1914	1938	2023	2108	2228	2343
Lache, Cliveden Road shops	1834	1850	1920	1944	2029	2114	2234	2349
Handbridge, Parish Church	1842	1858	1928	1952	2035	2120	2240	2355
Chester, Bus Interchange*	1852	1908	1938	2002	2043	2128	2248	000

Sundays and Bank Holidays*

Dydd Sul a Gwyliau Cyhoeddus*

Chester, Bus Interchange*	-	0915	0945	1015	1045	then at these times / yna'r munudau hyn	15	45	post each hour until / wrth bob awr tan	1515	1546	1616	1646	1716	1740	1832	1920
Handbridge, Parish Church	-	0926	0956	1026	1056		26	56		1526	1558	1628	1658	1728	1752	1843	1931
Lache, Cliveden Road shops	0903	0933	1003	1033	1103		33	03		1533	1605	1635	1705	1735	1759	1850	1938
Saltney, Sandy Lane, Community Centre arr	0910	0940	1010	1040	1110		40	10		1540	1612	1642	1712	1742	1806	1857	1945
Saltney, Sandy Lane, Community Centre dep	0910	0940	1010	1040	1110		40	10		1540	1612	1642	1712	1742	1806	1857	1945
Lache, Cliveden Road shops	0919	0949	1019	1049	1119		49	19		1548	1620	1650	1720	1750	1814	1905	1953
Handbridge, Parish Church	0925	0955	1025	1055	1125		55	25		1554	1626	1656	1726	1756	1820	1911	1959
Chester, Bus Interchange*	0934	1004	1034	1104	1134	04	34	1603	1635	1705	1735	1805	1829	1920	2008		

*Please note that the opening of the new Chester Bus Interchange has been delayed until 5 June 2017. In the meantime this service will commence and terminate in Foregate Street until the new bus station is fully operational. / Mae agor Cyfnewidfa Bysiau Caer wedi ei ohirio tan 5 Mehefin 2017. Bydd y gwasanaeth hwn yn cychwyn ac yn gorffen yn y Foregate Street hyd nes bydd yr orsaf fysiau newydd yn gwbl weithredol.

Monday to Friday (except Bank Holidays)

Dydd Llun i Gwener (heblaw Gwyliau Cyhoeddus)

Service Number/Rhif Gwasanaeth	SDO							SHO SDO SDO						
Flint Cornist Brushwood Avenue	-	-	-	-	1036	1236	1438	-	1511	-	1531	-	1636	
Flint, McDonalds	-	-	-	-	1046	1246	1448	-	1521	1520	1541	-	1646	
Flint Retail Park	-	-	-	-	1048	1248	1450	-	1523	-	1543	-	1648	
Bagillt Post Office	-	-	-	-	1052	1252	-	-	1527	1525	1546	-	1659	
Bagillt Boot & Ship	0705	0725	0750	0855	1055	1255	-	-	1530	1529	1550	-	1701	
Cairnton Crescent	0707	0727	0752	0859	1059	1259	-	-	1534	-	-	-	R	
Holywell Bus Station Stand 3	-	-	0759	0905	1105	1305	-	1518	1540	1538	-	-	R	
Greenfield Packet House	-	-	-	0910	1110	1310	-	1523	-	1539	-	-	-	
Mostyn Glan-y-Don	0712	0732	-	-	-	-	-	-	-	-	-	-	-	
Maes Pennant Shops	-	-	-	0916	1116	1316	-	1529	-	-	-	-	-	
Rhewl Mostyn Swan	-	-	-	0921	1121	1321	-	1532	-	-	-	-	-	
Pen-y-ffordd Post Office	0722	-	-	0929	1129	1329	-	1539	-	-	-	1640	-	
Gwespyr Tanrallt Road	0728	-	-	0935	1135	1335	-	1545	-	-	-	1646	-	
Talacre Beach Club	-	-	-	0941	1141	1341	-	-	-	-	-	1653	-	
Gronant Crossroads	0733	0745	-	0948	1148	1348	-	1551	-	-	-	1657	-	
Prestatyn Bus Station	0739	-	-	0955	1155	1355	-	1558	-	-	-	1703	-	
Beverley Drive	-	-	-	1005	1205	1405	-	-	-	-	-	-	-	
Rhyl Bus Station	-	-	-	1015	1215	1415	-	-	-	-	-	-	-	

R - Yn parhau: Cairnton Crescent ac i'r gorsaf bysiau Treffynnon ar gais / To Cairnton Crescent, Holywell Bus Station on request

SDO - Dyddiau Ysgol yn unig / School Days only

SHO - Gwyliau Ysgol yn unig / School Holidays only

Rhyl/Y Rhyl - Prestatyn - Flint Cornist/Fflint (Cornist)

via/drwy Holywell/Treffynnon

P & O Lloyd

18

Monday to Friday (except Bank Holidays)

Dydd Llun i Gwener (heblaw Gwyliau Cyhoeddus)

Service Number/Rhif Gwasanaeth	SDO				SHO	COR SDO				
Rhyl Bus Station	-	-	1050	1250	-	-	-	-	-	-
Beverley Drive	-	-	1100	1300	-	-	-	-	-	-
Prestatyn Bus Station	-	-	1110	1310	-	-	1410	-	1558	1610
Gronant Crossroads	0745	-	1117	1317	-	-	1417	-	1605	1617
Talacre Beach Club	-	-	1124	1324	-	-	1424	-	-	1624
Gwespyr Tanrallt Road	0750	-	1128	1328	-	-	1428	-	-	1628
Pen-y-ffordd Post Office	0754	0933	1133	1333	-	-	1433	-	-	1633
Rhewl Mostyn Swan	0801	0940	1140	1340	-	-	1440	-	-	-
Maes Pennant Shops	0806	0945	1145	1345	-	-	1445	-	-	-
Mostyn Glan-y-Don	-	-	-	-	-	-	-	-	1615	-
Greenfield Packet House	0813	0953	1153	1353	-	-	1452	-	1617	-
Holywell , Bus Station, Stand 1	0817	0958	1158	1358	-	-	1455	-	-	-
Cairnton Crescent	-	1003	1203	1403	-	-	-	-	-	-
Bagillt Boot & Ship	0821	1006	1206	1406	-	-	-	1606	-	-
Bagillt Post Office	0824	1009	1209	1409	-	-	-	1609	-	-
Flint Retail Park	-	1017	1217	1417	1455	1455	-	1617	-	-
Flint Ship	0834	1022	1222	1424	1457	1457	-	1622	-	-
Flint Church Street	-	1026	1226	1428	1501	1501	-	1626	-	-
Flint Cornist , Brushwood Avenue	-	1036	1236	1438	1511	1531	-	1636	-	-

COR - Heibio Ysgol Cornist / Via Cornist School

SDO - Dyddiau Ysgol yn unig / School Days only

SHO - Gwyliau Ysgol yn unig / School Holidays only

Saturdays only

Dydd Sadwrn yn unig

Service Number/Rhif Gwasanaeth					
Flint Cornist Brushwood Avenue	-	1036	1236	1436	1636
Flint McDonalds	-	1046	1246	1446	1646
Flint Retail Park	-	1048	1248	1448	1648
Bagillt Post Office	-	1059	1259	1459	1659
Bagillt Boot & Ship	0901	1101	1301	1501	1701
Cairnton Crescent	0904	1104	1304	1504	R
Holywell Bus Station Stand 3	0910	1110	1310	1510	R
Greenfield Packet House	0915	1115	1315	1515	-
Maes Pennant Shops	0921	1121	1321	1521	-
Rhewl Mostyn Swan	0926	1126	1326	1526	-
Penyffordd Post Office	0934	1134	1334	1534	-
Talacre Beach Club	0946	1146	1346	-	-
Gronant Crossroads	0953	1153	1353	-	-
Prestatyn Bus Station	1000	1200	1400	-	-
Rhyl Bus Station	1014	1214	1414	-	-

Rhyl Bus Station	-	1055	1255	1455	-
Prestatyn Bus Station	-	1110	1310	1510	-
Gronant Crossroads	-	1117	1317	1517	-
Talacre Beach Club	-	1124	1324	1524	-
Penyffordd Post Office	0934	1134	1334	1534	1534
Rhewl Mostyn Swan	0940	1140	1340	1540	-
Maes Pennant Shops	0945	1145	1345	1545	-
Mostyn Glan-y-Don	-	-	-	-	1542
Greenfield Packet House	0953	1153	1353	1553	-
Holywell Bus Station Stand 1	0958	1158	1358	1558	-
Cairnton Crescent	1003	1203	1403	1603	1548
Bagillt Boot & Ship	1006	1206	1406	1606	1550
Bagillt Post Office	1008	1208	1408	1608	-
Flint Retail Park	1017	1217	1417	1617	-
Flint Ship	1022	1222	1422	1622	-
Flint Church Street	1026	1226	1426	1626	-
Flint Cornist Brushwood Avenue	1036	1236	1436	1636	-

Monday to Friday (except Bank Holidays)

Dydd Llun i Gwener (heblaw Gwyliau Cyhoeddus)

Service Number/Rhif Gwasanaeth				CW			
Flint Cornist Brushwood Avenue	0836	0936	1136	1336	-	1728	-
Flint McDonalds	0846	0946	1146	1346	-	1738	-
Flint Retail Park	0848	0948	1148	1348	-	1740	-
Wern Stores	-	0955	1155	-	-	1742	-
Bagillt Post Office	0859	0959	1159	1352	-	1745	-
Bagillt Boot & Ship	0901	1001	1201	1354	-	-	-
Pen-y-Maes	0907	1007	1207	1400	-	-	-
Holywell Bus Station Stand 3	0910	1010	1210	1403	1518	-	1805
Carmel Old Post Office	0915	1015	1215	1408	1523	-	1810
Carmel Mertyn Lane	R	R	R	R	R	R	R
Gorsedd Druid Inn	0917	1017	1217	1410	1525	-	R
Whitford Maes Rhydwen	0924	1024	1224	R	1530	-	R
Tre-Mostyn	R	R	R	-	-	-	-
Berthengam	0931	1031	1231	-	1537	-	-
Llanasa Church	R	R	R	-	-	-	-
Trelawnyd War Memorial	0937	1037	1237	-	1543	-	-
Dyserth High Street	0942	1042	1242	-	1547	-	-
Winchester Drive	0947	1047	1247	-	-	-	-
Llandaff Drive	0950	1050	1250	-	-	-	-
Beverley Drive	0952	1052	1252	-	1552	-	-
Prestatyn Bus Station	0957	1057	1257	-	1558	-	-
Rhyl Bus Station 6	-	1112	1312	-	-	-	-

R - Ar gais / on request

CW - yn galw yng Nghaerwys ar gais / calls at Caerwys on request

Rhyl/Y Rhyl - Prestatyn - Flint Cornist/Fflint (Cornist)

via/drwy Whitford, Holywell/Treffynnon and/a Bagillt

P & O Lloyd

19

Monday to Friday (except Bank Holidays)

Dydd Llun i Gwener (heblaw Gwyliau Cyhoeddus)

Service Number/Rhif Gwasanaeth								
Rhyl Bus Station	-	-	-	-	1150	1350	-	-
Prestatyn Bus Station	-	0748	-	1010	1205	1405	-	1718
Beverley Drive	-	-	-	-	1208	1408	-	-
Llandaff Drive	-	-	-	-	1210	1410	-	-
Winchester Drive	-	-	-	-	1213	1413	-	1718
Dyserth High Street	-	0758	-	1020	1220	1420	-	1728
Trelawnyd	-	0803	-	1031	1231	1431	-	1733
Llanasa Church	-	-	-	R	R	R	-	-
Berthengam	-	0809	-	1037	1237	1437	-	1739
Tre-Mostyn	-	-	-	R	R	R	-	-
Whitford Maes Rhydwen	-	0815	-	1045	1245	1445	-	1745
Gorsedd Druid's Inn	-	0821	-	1051	1251	1451	-	1751
Carmel Mertyn Lane	-	-	-	R	R	R	-	-
Carmel Old Post Office	-	0823	-	1053	1253	1453	-	1753
Holywell , Bus Station, Stand 1	0800	0830	0900	1100	1300	1458	1700	1758
Bagillt Boot End	0806	-	0906	1106	1306	1504	1706	-
Bagillt Post Office	0808	-	0908	1108	1308	-	1708	-
Wern Stores	0813	-	0913	1113	-	-	-	-
Flint Retail Park	0820	-	0920	1120	1317	-	1713	-
Flint Ship	0822	-	0922	1122	1322	-	1715	-
Flint Church Street	0826	-	0926	1126	1326	-	1718	-
Flint Cornist Brushwood Avenue	0836	-	0936	1136	1336	-	1728	-

R - Ar gais / on request

Saturdays only

Dydd Sadwrn yn unig

Service Number/Rhif Gwasanaeth		
Flint Cornist Brushwood Avenue	0936	-
Flint McDonalds	0946	-
Flint Retail Park	0948	-
Wern Stores	0955	-
Bagillt Post Office	0959	-
Bagillt Boot & Ship	1001	-
Pen-y-Maes	1007	-
Holywell Bus Station Stand 3	1010	-
Carmel Old Post Office	1015	-
Carmel Mertyn Lane	R	-
Gorsedd Druid Inn	1017	-
Whitford Maes Rhydwen	1024	-
Tre-Mostyn	R	-
Berthengam	1031	1225
Llanasa Church	R	-
Trelawnyd	1037	1230
Dyserth High Street	1047	1240
Prestatyn Bus Station	1100	1250
Rhyl Bus Station	1114	1305

Rhyl Bus Station	-	1145	1355
Prestatyn Bus Station	-	1200	1410
Dyserth High Street	-	1210	1420
Trelawnyd	-	1220	1431
Llanasa Church	-	-	R
Berthengam	-	1225	1437
Tre-Mostyn	-	-	R
Whitford Maes Rhydwen	-	-	1445
Gorsedd Druid's Inn	-	-	1451
Carmel Mertyn Lane	-	-	R
Carmel Old Post Office	-	-	1453
Holywell , Bus Station, Stand 1	0900	-	1500
Bagillt Boot & Ship	0906	-	1506
Bagillt Post Office	0908	-	1508
Wern Stores	0913	-	-
Flint Retail Park	0920	-	-
Flint Ship	0922	-	-
Flint Church Street	0926	-	-
Flint Cornist Brushwood Avenue	0936	-	-

Monday to Friday (except Bank Holidays)

Dydd Llun i Gwener (heblaw Gwyliau Cyhoeddus)

Service Number/Rhif Gwasanaeth	SDO 21	21A	21B	21A	21B	21A	DPS 21B	21A	21B	21B
Buckley Railway Station	0815	0908	1008	1108	1208	1308	1408	1508	1608	1709
Meadow Ave / Burntwood Ct	0818	-	1012	-	1212	-	1412	-	1612	R
Beech Road	0820	-	-	-	-	-	-	-	-	R
Knowle Lane	0822	-	-	-	-	-	1415	-	1615	R
Hawkesbury Road	0824	-	-	-	-	-	1416	-	1616	R
Ewloe Place	-	-	1015	-	1215	-	-	-	-	R
Alltami Road	-	-	1017	-	1217	-	-	-	-	R
Buckley Health Centre	0824	-	1018	-	1218	-	1416	-	1617	1713
Spon Green Megs Lane	-	0912	-	1111	-	1311	-	1511	-	R
Buckley Precinct Way	-	0914	1022	1114	1222	1314	1420	1514	1622	R
Buckley Cross	0827	0917	-	1117	-	1317	-	1517	-	1718
Bryn Awelon	-	-	1028	-	1228	-	1425	-	1628	R
Southdown, Sunningdale	0831	0922	1033LA	1122	1233LA	-	1430	1522	1633	R
Bryn Awelon	0836	0927	-	1127	-	-	-	1527	-	R
Buckley Cross	-	-	1037	-	1237	-	1434	-	1638	R
Buckley Precinct Way	0842	0934	1041	1134	1241	-	1437	1534	1641	R
Spon Green Megs Lane	-	-	1043	-	1243	-	1440	-	1644	R
Buckley Health Centre	0845	0937	-	1137	-	-	-	1537	-	R
Alltami Road	-	-	-	1138	-	-	-	-	-	R
Ewloe Place	-	-	-	1140	-	-	-	-	-	R
Buckley Railway Station	0849	-	R	-	R	-	1446	-	R	R
Hawkesbury Road	-	0937	-	-	-	-	-	1540	-	R
Knowle Lane	-	0938	-	-	-	-	-	1541	-	R
Meadow Ave / Burntwood Ct	-	0941	1049	1144	1249	-	1449	1553	1649	R
Beech Road	-	R	R	R	R	-	R	R	-	R
Buckley Railway Station	-	0945	1052	1148	1252	-	1452	1547	1652	R

R - Passengers intending to travel to this point may inform the driver at the time of travel or by booking in advance by calling 07966 405212 from 0800-1700 hours Mondays to Fridays (please allow a minimum of two hours notice for bookings).

R - Gall teithwyr sy'n bwriadu trafaelio i/o'r man hon hysbysu'r gyrrwr ar y daith neu fwcio dwry ffonio 07966 405212 ymlaen llaw rhwng 0800 ac 1700 o ddydd Llun i Gwener (rhowch o leiaf 2 awr o rybudd cyn teithio os gwelwch yn dda)

SDO - School days only / Dyddiau ysgol yn unig

DPS - Via Drury Primary School / Heibio Ysgol Gynradd Drury

LA - Via Linderick Avenue / Heibio Linderick Avenue

Monday to Saturday (except Bank Holidays)	Dydd Llun i Sadwrn (heblaw Gwyliau Cyhoeddus)																				
Service Number/Rhif Gwasanaeth	22 NS	22A	22	22A	22	22A	22	22A	22	22A	22	22A	22	22A	22	22A	22	22A	22	22A	
Holway Moor Lane	0745	0830	0900	0930	1000	1030	1100	1130	1200	1230	1300	1330	1400	1430	1500	-	1530	1600	1630	1700	-
Holywell Bus Stn Stand 2	-	0837	-	0937	-	1037	-	1137	-	1237	-	1337	-	1437	-	1518	1537	-	1637	-	1722
Holywell Bus Stn Stand 4	0750	-	0905	-	1005	-	1105	-	1205	-	1305	-	1405	-	1505	-	-	1605	-	1705	-
Brynford Hafod-y-Bryn	-	0846	-	0946	-	1046	-	1146	-	1246	-	1346	-	1446	-	1533	1546	-	1646	-	-
Pen-y-Maes Wood Lane	0754	-	0909	-	1009	-	1109	-	1209	-	1309	-	1409	-	1509	-	-	1609	-	1709	-

Service Number/Rhif Gwasanaeth	22 NS	22A PE NS	22A	22	22A	22	22A	22	22A	22	22A	22	22A	22	22A	22 S	22A NS	22A S	22	22A	22
Pen-y-Maes Wood Lane	0755	-	-	0913	-	1013	-	1113	-	1213	-	1313	-	1413	-	1513	-	-	1613	-	1713
Brynford Hafod-y-Bryn	-	0807	0846	-	0946	-	1046	-	1146	-	1246	-	1346	-	1446	-	1533	1546	-	1646	-
Holywell Bus Stn Stand 3	0800	0819	0855	0925	0955	1025	1055	1125	1155	1225	1255	1325	1355	1425	1455	1525	1540	1555	1625	1655	1718
Holway Moor Lane	-	-	0859	0929	0959	1029	1059	1129	1159	1229	1259	1329	1359	1429	1459	1529	1544	1559	1629	1659	-

NS - Not Saturday / Dim ar ddydd Sadwrn
 S - Saturday only / Dydd Sadwrn yn unig
 PE - via Pentre Halkyn / heibio Pentre Halkyn

Monday to Friday (except Bank Holidays)

Dydd Llun i Gwener (heblaw Gwyliau Cyhoeddus)

Greenfield School Lane	0925	1025	1125
Holywell Bus Stn Stand 3	0936	1036	1136
Holywell Hospital	0939	1039	1139

Holywell Hospital	0940	1040	1140
Holywell Bus Stn Stand 3	0943	1043	1143
Greenfield School Lane	0954	1054	1154

Mold/Yr Wyddgrug - Wrexham/Wrecsam

via/drwy Leeswood, Caergwrle and/a Maelor Hospital/Ysbyty Maelor

Arriva

26, 27

Monday to Friday (except Bank Holidays)

Dydd Llun i Gwener (heblaw Gwyliau Cyhoeddus)

Service Number/Rhif Gwasanaeth	27	27	27	26	26	26	26	26	26	26	26 VMC	26	27	27
Mold Bus Station	0655	0740	0840	0940	1040	1140	1240	1340	1440	1540	1640	1740	1840	
Leeswood, Drury Lane	0708	0753	0853	0953	1053	1153	1253	1353	1453	1553	1653	1753	1853	
Caergwrle, Pentre Lane Turn (SE)	0719	0804	0904	1004	1104	1204	1304	1404	1504	1604	1704	1802	1902	
Caergwrle Railway Station	0723	0808	0908	1008	1108	1208	1308	1408	1508	1608	1708	1806	1906	
Tan yr Allt	0729	0814	0914	1014	1114	1214	1314	1414	1514	1614	1714	1811	1911	
Pendine Estate	0734	0819	0919	1019	1119	1219	1319	1419	1519	1619	1719	1817	1917	
Wrexham , Bus Station	0745	0836	0930	1030	1130	1230	1330	1430	1530	1630	1730	1826	1926	

Saturdays only

Dydd Sadwrn yn unig

Service Number/Rhif Gwasanaeth	27	27	27	26	26	26	26	26	26	26	26	26	27	27
Mold Bus Station	0705	0750	0835	0935	1035	1135	1235	1335	1435	1535	1635	1735	1835	
Leeswood, Drury Lane	0718	0803	0848	0948	1048	1148	1248	1348	1448	1548	1648	1748	1848	
Caergwrle, Pentre Lane Turn (SE)	0725	0810	0855	0955	1055	1155	1255	1355	1455	1555	1655	1755	1855	
Caergwrle Railway Station	0729	0814	0859	1059	1159	1159	1259	1359	1459	1559	1659	1759	1859	
Tan yr Allt	0734	0819	0904	1004	1104	1204	1304	1404	1504	1604	1704	1804	1904	
Pendine Estate	0741	0826	0911	1011	1111	1211	1311	1411	1511	1611	1711	1811	1911	
Wrexham , Bus Station	0751	0836	0921	1021	1121	1221	1321	1421	1521	1621	1721	1821	1921	

VMC - Operates via Mold Alun/Maes Garmon on school days / Heibio Ysgol Alun/Maes Garmon ar ddyddiau ysgol

Wrexham/Wreccsam - Mold/Yr Wyddgrug

via/drwy Maelor Hospital/Ysbyty Maelor, Caergwrle and/a Leeswood

Arriva **26, 27**

Monday to Friday (except Bank Holidays)	Dydd Llun i Gwener (heblaw Gwyliau Cyhoeddus)												
Service Number/Rhif Gwasanaeth	27	27	27 VMC	26	26	26	26	26	26	26	26	27	27
Wrexham, Bus Station (4)	0600	0645	0745	0845	0945	1045	1145	1245	1345	1445	1545	1645	1745
Pendine Estate	0611	0656	0756	0856	0956	1056	1156	1256	1356	1456	1556	1656	1756
Tan yr Allt	0617	0702	0802	0902	1002	1102	1202	1302	1402	1502	1602	1702	1802
Caergwrle, Railway Station	0620	0705	0805	0905	1005	1105	1205	1305	1405	1505	1605	1705	1805
Pontblyddyn, Bridge Inn (NW)	0628	0713	0813	0913	1013	1113	1213	1313	1413	1513	1613	1713	1813
Leeswood, Bethel Chapel	0636	0721	0821	0921	1021	1121	1221	1321	1421	1521	1621	1721	1821
Mold Bus Station	0649	0734	0834	0934	1034	1134	1234	1334	1434	1534	1634	1734	1834

Saturdays only	Dydd Sadwrn yn unig												
Service Number/Rhif Gwasanaeth	27	27	27	26	26	26	26	26	26	26	26	27	27
Wrexham, Bus Station (4)	0615	0700	0745	0845	0945	1045	1145	1245	1345	1445	1545	1645	1745
Pendine Estate	0625	0710	0755	0855	0955	1055	1155	1255	1355	1455	1555	1655	1755
Tan yr Allt	0632	0717	0802	0902	1002	1102	1202	1302	1402	1502	1602	1702	1802
Caergwrle, Railway Station	0635	0720	0805	0905	1005	1105	1205	1305	1405	1505	1605	1705	1805
Pontblyddyn, Bridge Inn (NW)	0643	0728	0813	0913	1013	1131	1213	1313	1413	1513	1613	1713	1813
Leeswood, Bethel Chapel	0648	0733	0818	0918	1018	1118	1218	1318	1418	1518	1618	1718	1818
Mold Bus Station	0701	0746	0831	0931	1031	1131	1231	1331	1431	1531	1631	1731	1831

VMC - Operates via Mold Alun/Maes Garmon on school days / Heibio Ysgol Alun/Maes Garmon ar ddyddiau ysgol

Monday to Friday (except Bank Holidays)

Dydd Llun i Gwener (heblaw Gwyliau Cyhoeddus)

Service Number/Rhif Gwasanaeth	28	28X	28 MG	28	28A FM	28A	28	28A	28	28	S28 MC SDO	28A CAS SDO	28A SHO	28	28	28
Wrexham Bus Station Stand 4	-	-	0750	-	0922	1022	1122	1222	1322	1422	-	1450	1502	-	-	1722
Wrexham Maelor Hospital	-	-	0755	-	-	-	1127	-	1327	1427	-	-	-	-	-	1727
Caergwrle Railway Station	-	-	0805	-	-	-	1137	-	1337	1437	-	-	-	-	-	1740
Hope Church	-	-	0807	-	-	-	1139	-	1339	1439	-	-	-	-	-	1742
Hope Hall Drive	-	-	-	-	0939	1039	-	1239	-	-	-	1507	1519	-	-	-
Meadowslea Hospital	-	-	0810	-	0942	1042	1142	1242	1342	1442	-	1527	1522	-	-	1745
Penyffordd War Mem Institute	-	-	0812	-	0944	1044	1144	1244	1344	1444	-	1529	1524	-	-	1747
Penymynydd Roundabout	-	-	0815	-	0947	1047	1147	1247	1347	1447	-	1532	1527	-	-	1750
Dobshill Roundabout	-	-	0816	-	0948	1048	1148	1248	1348	1448	-	1533	1528	-	-	1751
Buckley Station approach	-	-	0818	-	0950	1050	1150	1250	1350	1450	-	1535	1530	-	-	1753
Buckley Cross	-	-	0822	-	0954	1054	1154	1254	1354	1454	-	1539	1534	-	-	1757
Mold Bus Station Stand 4	0705	0820	0838	0905	1005	1105	1205	1305	1405	1505	1545	1547	1545	1610	1710	1810
Clwyd Theatr Cymru	0708	0823	-	0908	1008	1108	1208	1308	1408	1508	1548	-	1548	1613	1713	1813
Sychdyn Vownog	-	-	-	-	-	-	-	-	-	-	1555	-	-	-	-	-
Sychdyn Cross Keys	0711	0826	-	0911	1011	1111	1211	1311	1411	1511	1600	-	1551	1616	1716	1816
Northop Brook Street	0714	0829	-	0914	1014	1114	1214	1314	1414	1514	1606	-	1553	1619	1719	1819
Mount Pleasant Mill Tavern	0717	0832	-	0917	1019	1117	1217	1317	1417	1517	1609	-	1556	1622	1722	1822
Prince of Wales Ave Welsh Harp	0721	-	-	0921	1023	1121	1221	1321	1421	1521	1611	-	1558	1626	1726	1826
Flint Retail Park	0726	-	-	0926	1028	1126	1226	1326	1426	1526	-	-	-	1631	1731	1831
Flint Ship	0727	0835	-	0927	1029	1127	1227	1327	1427	1527	1616	-	1603	1632	1732	1832

MG - operates via Maes Garmon on school days / heibio Ysgol Maes Garmon ar ddyddiau ysgol **FM** - via Flint Mountain / heibio Mynydd Flint

MC - operates via Mold Campus on school days / heibio Ysgol Alun / Maes Garmon ar ddyddiau ysgol **SDO** - School Days only / Dyddiau Ysgol yn unig

CAS - operates via Castell Alun High School / heibio Ysgol Uwchradd Castell Alun **SHO** - School Holidays only (except Public Holidays) / Gwyliau Ysgol yn unig (heblaw Gwyliau Cyhoeddus)

	Monday to Friday (except Bank Holidays)								Dydd Llun i Gwener (heblaw Gwyliau Cyhoeddus)								
Service Number/Rhif Gwasanaeth	28X	28	28A CAS SDO	28A SHO	28X	S28 SDO	28A	28	28A	28	28	28A	28	28 MG	28	28	28
Flint Ship	0645	-	0745	0745	0755	0810	0845	0945	1045	1145	1245	1345	1445	-	1545	1645	1745
Prince of Wales Ave Welsh Harp	-	-	0748	0748	-	0813	0851	0951	1051	1151	1251	1351	1451	-	1551	1651	1751
Mount Pleasant Mill Tavern	0647	-	0752	0752	0757	0819	0854	0954	1054	1154	1254	1354	1454	-	1554	1654	1754
Northop Red Lion	0650	-	0755	0755	0800	0825	0857	0957	1057	1157	1257	1357	1457	-	1557	1657	1757
Sychdyn Cross Keys	0654	-	0759	0759	0804	-	0901	1001	1101	1201	1301	1401	1501	-	1601	1701	1801
Sychdyn Vownog	-	-	-	-	-	0830	-	-	-	-	-	-	-	-	-	-	-
Clwyd Theatr Cymru	0657	-	0802	0802	0807	-	0904	1004	1104	1204	1304	1404	1504	-	1604	1704	1804
Mold Bus Station Stand 6	0700	0710	0805	0810	0810	0839	0910	1010	1110	1210	1310	1410	1507	1550	1607	1707	1807
Buckley Cross	-	0718	0813	0818	-	-	0918	1018	1118	1218	1318	1418	-	1558	-	-	-
Buckley Station approach	-	0721	0817	0822	-	-	0922	1022	1122	1222	1322	1422	-	1602	-	-	-
Dobshill Roundabout	-	0722	0818	0823	-	-	0923	1023	1123	1223	1323	1423	-	1603	-	-	-
Penymynydd Roundabout	-	0723	0819	0824	-	-	0924	1024	1124	1224	1324	1424	-	1604	-	-	-
Penyffordd War Mem Institute	-	0726	0822	0827	-	-	0927	1027	1127	1227	1327	1427	-	1607	-	-	-
Meadowslea Hospital	-	0728	0825	0830	-	-	0930	1030	1130	1230	1330	1430	-	1610	-	-	-
Hope Hall Drive	-	-	0833	0833	-	-	0933	-	1133	-	-	1433	-	-	-	-	-
Hope Church	-	0731	-	-	-	-	-	1033	-	1233	1333	-	-	1613	-	-	-
Caergwrle Station	-	0733	-	-	-	-	-	1035	-	1235	1335	-	-	1615	-	-	-
Wrexham Maelor Hospital	-	0742	-	-	-	-	-	1045	-	1245	1345	-	-	1625	-	-	-
Wrexham Bus Station	-	0747	0849	0849	-	-	0949	1050	1149	1250	1350	1449	-	1630	-	-	-

MG - operates via Maes Garmon on school days / heibio Ysgol Maes Garmon ar ddyddiau ysgol

CAS - operates via Castell Alun High School / heibio Ysgol Uwchradd Castell Alun

SHO - School Holidays only (except Public Holidays) / Gwyliau Ysgol yn unig (heblaw Gwyliau Cyhoeddus)

SDO - School Days only / Dyddiau Ysgol yn unig

Wrexham/Wreccsam - Mold/Yr Wyddgrug - Flint/Y Fflint

via/drwy Penyffordd, Buckley and/a Northop/Llaneurgain

Townlynx

28, 28A

Saturdays only

Dydd Sadwrn yn unig

Service Number/Rhif Gwasanaeth	28	28	28	28A	28	28A	28	28A	28	28A	28
Wrexham Bus Station Stand 4	-	-	-	1022	-	1222	-	1422	-	1622	-
Hope Hall Drive	-	-	-	1039	-	1239	-	1439	-	1639	-
Meadowslea Hospital	-	-	-	1042	-	1242	-	1442	-	1642	-
Penyffordd War Mem Institute	-	-	-	1044	-	1244	-	1444	-	1644	-
Penymynydd Roundabout	-	-	-	1047	-	1247	-	1447	-	1647	-
Dobshell Roundabout	-	-	-	1048	-	1248	-	1448	-	1648	-
Buckley Station approach	-	-	-	1050	-	1250	-	1450	-	1650	-
Buckley Cross	-	-	-	1054	-	1254	-	1454	-	1654	-
Mold Bus Station Stand 4	0805	0905	1005	1105	1205	1305	1405	1505	1610	1710	1810
Clwyd Theatr Cymru	0808	0908	1008	1108	1208	1308	1408	1508	1613	1713	1813
Sychdyn Cross Keys	0811	0911	1011	1111	1211	1311	1411	1511	1616	1716	1816
Northop Brook Street	0814	0914	1014	1114	1214	1314	1414	1514	1619	1719	1819
Mount Pleasant Mill Tavern	0817	0917	1017	1117	1217	1317	1417	1517	1622	1722	1822
Prince of Wales Ave Welsh Harp	0821	0921	1021	1121	1221	1321	1421	1521	1626	1726	1826
Flint Retail Park	0826	0926	1026	1126	1226	1326	1426	1526	1631	1731	1831
Flint Ship	0827	0927	1027	1127	1227	1327	1427	1527	1632	1732	1832

Saturdays only

Dydd Sadwrn yn unig

Service Number/Rhif Gwasanaeth	28	28A	28	28A	28	28A	28	28A	28	28	28
Flint Ship	0745	0845	0945	1045	1145	1245	1345	1445	1545	1645	1745
Prince of Wales Ave Welsh Harp	0748	0848	0948	1048	1148	1248	1348	1448	1548	1648	1748
Mount Pleasant Mill Tavern	0752	0851	0951	1052	1152	1252	1352	1452	1552	1652	1752
Northop Red Lion	0755	0854	0954	1055	1155	1255	1355	1455	1555	1655	1755
Sychdyn Cross Keys	0759	0858	0958	1059	1159	1259	1359	1459	1559	1659	1759
Clwyd Theatr Cymru	0802	0902	1002	1102	1202	1302	1402	1502	1602	1702	1802
Mold Bus Station Stand 6	0805	0910	1005	1110	1205	1310	1405	1510	1605	1705	1805
Buckley Cross	-	0918	-	1118	-	1318	-	1518	-	-	-
Buckley Station approach	-	0922	-	1122	-	1322	-	1522	-	-	-
Dobshell Roundabout	-	0923	-	1123	-	1323	-	1523	-	-	-
Penymynydd Roundabout	-	0924	-	1124	-	1324	-	1524	-	-	-
Penyffordd War Mem Institute	-	0927	-	1127	-	1327	-	1527	-	-	-
Meadowslea Hospital	-	0930	-	1130	-	1330	-	1530	-	-	-
Hope Hall Drive	-	0933	-	1133	-	1333	-	1533	-	-	-
Wrexham Bus Station	-	0949	-	1149	-	1349	-	1549	-	-	-

Monday to Saturday (except Bank Holidays)

Dydd Llun i Sadwrn (heblaw Gwyliau Cyhoeddus)

Service Number/Rhif Gwasanaeth					SDO	SSH	
Mold Bus Station Stand 6	0700	0945	1135	1335	1530	1545	1735
Mold Campus	-	-	-	-	1540	-	-
Nercwys, White Lion	0709	0954	1144	1344	1549	1554	1744
Treuddyn, Farmer's Arms	0717	1002	1152	1352	1557	1602	1752
Llanfynydd Post Office	0720	1007	1157	1357	1602	1607	1757
Cymau Ffrith Road Junction	0722	1009	1159	1359	1604	1609	1759
Cymau Old Post Office	0725	1011	1201	1401	1606	1611	1801
Abermorddu School	0729	1015	1205	1405	1610	1615	1805
Cefn-y-Bedd Hollybush	0730	1016	1206	1406	1611	1616	-
Tan-yr-allt	0734	1020	1210	1410	-	-	-
Gwersyllt Wheatsheaf	0738	1024	1214	1414	1614	1619	-
Wrexham Sainsbury's	-	1026	1216	1416	1616	1621	-
Wrexham Bus Station 4	0753	1034	1224	1424	1624	1629	-

SDO - Dyddiau ysgol yn unig / School days only

SSH - Dydd Sadwrn a Gwyliau Ysgol yn unig / Saturdays and School Holidays only

Monday to Saturday (except Bank Holidays)

Dydd Llun i Sadwrn (heblaw Gwyliau Cyhoeddus)

Service Number/Rhif Gwasanaeth	VMC					
Wrexham Bus Stn Stand 4	0755	1035	1235	1435	1640	-
Wrexham Sainsbury's	-	1040	1240	1440	1645	-
Gwersyllt Wheatsheaf	0803	1045	1245	1445	1650	-
Tan-yr-allt	-	1047	1247	1447	1652	-
Cefn-y-Bedd Hollybush	0806	1053	1253	1453	1658	-
Abermorddu School	0807	1054	1254	1454	1659	1805
Cymau Old P.O.	0811	1058	1258	1458	1703	R
Ffrith Cymau Rd Jnct	0814	1101	1301	1501	1706	R
Llanfynydd Post Office	0817	1103	1303	1503	1708	R
Treuddyn Farmers Arms	0821	1108	1308	1508	1713	R
Nercwys White Lion	0828	1115	1315	1515	1720	R
Mold Campus	0833	-	-	-	-	-
Mold Bus Station	0835	1122	1322	1522	1727	R

SSH - Saturdays and school holidays / Dydd Sadwrn a gwyliau ysgol

Sch - School days only / Dyddiau ysgol yn unig

VMC - Via Mold Alun High School on school days / Heibio Ysgol Alun ar ddyddiau ysgol

R - Passengers intending to travel to this point may inform the driver at the time of travel / Gall teithwyr sy'n bwriadu trafaelio i'r man hon hysbysu'r gyrrwr ar y daith

Monday to Friday (School days only)

Dydd Llun i Gwener (Dyddiau ysgol yn unig)

Service Number/Rhif Gwasanaeth	SDO
Sandycroft St Francis Church	0748
Mancot Hawarden Way	0750
Mancot Chapel	0752
Mancot Mechanics Arms	0754
Deeside Leisure Centre	0757
Shotton Ash Grove	0800
Shotton Chester Road West	0802
Connah's Quay Boathouse	0805
Connah's Quay Mold Road	0810
Connah's Quay Mold Road / Fair Oaks Drive	0815
Mold Campus	0840

	SDO
Mold Campus	1530
Connah's Quay Mold Road / Fair Oaks Drive	-
Connah's Quay Mold Road	-
Connah's Quay Boathouse	-
Shotton Chester Road West	-
Shotton Ash Grove	-
Deeside Leisure Centre	-
Mancot Mechanics Arms	-
Mancot Chapel	-
Mancot Hawarden Way	-
Sandycroft St Francis Church	-

Monday to Friday (except Bank Holidays)

Dydd Llun i Gwener (heblaw Gwyliau Cyhoeddus)

Service Number/Rhif Gwasanaeth	SDO	SHO
Aston Plough	0806	0806
Ewloe Car Auctions	0810	0810
Northop Hall Boars's Head	0815	0815
Northop Red Lion	0819	0819
Sychdyn Cross Keys	0822	0822
Mold Bus Station	0827	0827
Mold Campus	0830	-

	SDO	SHO
Mold Campus	1540	-
Mold Bus Station Stand 4	1545	1545
Sychdyn Cross Keys	1549	1549
Northop Brook Street	1552	1552
Northop Hall Boar's Head	1556	1556
Ewloe Car Auctions	1601	1601
Aston Plough	1605	1605

SDO – School Days only / Dyddiau Ysgol yn unig

SHO - School Holidays only (except Public Holidays) / Gwyliau Ysgol yn unig (heblaw Gwyliau Cyhoeddus)

Monday to Friday (School days only)

Dydd Llun i Gwener (Dyddiau ysgol yn unig)

Service Number/Rhif Gwasanaeth	SDO
Holywell Bus Station	0750
Pentre Halkyn	0758
Rhosesmor Red Lion	0801
Rhesycae	0803
Lixwm Crown	0807
Ysceiflog	0811
Brynford Crossroads	0815
Pantasaph	0823
Holywell Bus Station	0835
Holywell High School	0838

	SDO
Holywell High School	1515
Holywell Bus Station	1518
Pantasaph	1526
Brynford Crossroads	1530
Ysceiflog	1536
Lixwm Crown	1540
Rhesycae	1543
Rhosesmor Red Lion	1546
Pentre Halkyn	1551
Holywell Bus Station	1555

Monday to Saturday (except Bank Holidays)

Dydd Llun i Sadwrn (heblaw Gwyliau Cyhoeddus)

Service Number/Rhif Gwasanaeth	SDO	SSH	SDO				W			NS		
Strand	-	-	-	-	-	1047	-	1247	-	-	-	-
Holywell Bus Station Stand 3	0755	0800	0820	0855	0950	1050	1150	1250	1420	1450	1620	1710
Milwr	0758	0801	0821	0856	0951	1051	1151	1251	1421	1451	1621	1711
Pentre Halkyn P.O.	0801	0805	0826	0900	0955	1055	1155	1255	1425	1455	1625	1715
Halkyn Library	0808	0810	0833	0905	1000	1100	1200	1300	1430	1500	1630	1720
Berth Ddu	0810	0813	0836	0908	1003	1103	1203	1303	1433	1503	1633	1723
Rhosesmor	0813	0815	-	0910	1005	1105	1205	1305	1435	1505	1635	1725
Mold Bus Station	0822	0824	-	0919	1016	1114	1214	1314	1444	1514	1644	1734

	SSH	SDO	W				NS	S	NS	S	SDO	NS		
Mold Bus Station Stand 2	0830	0835	0920	1020	1120	1220	1320	1345	1445	1445	-	1545	1645	1745
Rhosesmor	0839	0844	0929	1029	1129	1229	1329	1354	1454	1454	-	1554	1654	1754
Berth Ddu	0841	0846	0931	1031	1131	1231	1331	1356	1456	1456	1520	1556	1656	1756
Halkyn Library	0844	0849	0934	1034	1134	1234	1334	1359	1459	1459	1523	1559	1659	1758
Pentre Halkyn P.O.	0849	0854	0939	1039	1139	1239	1339	1404	1504	1504	1530	1604	1704	1802
Milwr	0852	0857	0942	1042	1142	1242	1342	1407	1507	1507	1536	1607	1707	1807
Holywell Bus Station Stand 3	0854	0859	0944	1044	1144	1244	1344	1409	1509	1509	1540	1609	1709	1809
Strand	-	-	-	1047	-	1247	-	-	-	1512	-	-	-	-

SDO - School Days only / Dyddiau Ysgol yn unig

NS - Not Saturdays / Dim ar ddydd Sadwrn

W - via / heibio Windmill

SSH - Saturdays & School Holidays only / Dydd Sadwrn a Gwyliau Ysgol yn unig

S - Saturdays Only / dydd Sadwrn yn unig

Holway - Mold/Yr Wyddgrug

via/drwy Carmel, Pantasaph, Brynford, Lixwm and/a Rhes-y-cae

Townlynx

127

Monday to Friday (School days only)

Dydd Llun i Gwener (Dyddiau ysgol yn unig)

Service Number/Rhif Gwasanaeth	SDO
Holway Garage	0803
Carmel Old P.O.	0806
Gorsedd Druid Inn	0809
Pantasaph	0811
Brynford Crossroads	0815
Lixwm Garage	0821
Rhes-y-cae	0824
Mold Bus Station	0836

	SDO
Mold Bus Station Stand 2	1545
Rhes-y-cae	1559
Lixwm Garage	1601
Brynford Crossroads	1608
Pantasaph	1611
Gorsedd Druid Inn	1615
Carmel Old P.O.	1618
Holway Garage	1621

Monday to Friday (except Bank Holidays)

Dydd Llun i Gwener (heblaw Gwyliau Cyhoeddus)

Service Number/Rhif Gwasanaeth			
Moreton Cross Pasture Road	0402	0602	0702
Hoylake Road, Hurrell Road	0409	0609	0709
Bidston, Stanley Road, Hoylake Road	0412	0612	0712
Duke Street, Cleveland Street	0418	0618	0718
Birkenhead 12 Quays Ferry Terminal	0423	0623	0723
Woodside Bus Station	0428	0628	0728
Birkenhead Bus Station	0433	0633	0733
New Ferry, New Chester Road, Bebington Road	0443	0643	0743
Bromborough Pool Lane	0447	0647	0747
Bromborough Old Hall Road	0454	0654	0754
Eastham New Chester Road, Bridle Road	0500	0700	0800
Hooton Crossroads, New Chester Road	0503	0703	0803
Little Sutton Chester Road, Red Lion Lane	0506	0706	0806
Two Mills, Welsh Road, Parkgate Road	0511	0711	0811
Deeside Ind Park, First Avenue	0515	0715	0815
Deeside Ind Park, Toyota Plant	0519	0719	0819
Garden City, Welsh Road, Sealand Avenue	0525	0725	0825
Queensferry Station Road, Pierce Street	0528	0728	0828
Queensferry, Asda	0530	0730	0830
Sandycroft Chester Road, Hamilton Avenue	0536	0736	0836
Broughton Airbus	0542	0742	0842
Broughton Shopping Park Tesco	0544	0744	0844

Broughton Shopping Park	1617	1717
Broughton Airbus	1619	1719
Sandycroft Chester Road, Hamilton Avenue	1625	1725
Queensferry Station Road, Pierce Street	1634	1733
Garden City, Welsh Road, Sealand Avenue	1636	1736
Deeside Ind Park, Toyota Plant	1642	1742
Deeside Ind Park, First Avenue	1649	1746
Two Mills, Welsh Road, Parkgate Road	1659	1750
Little Sutton Chester Road, Red Lion Lane	1705	1755
Hooton Crossroads, New Chester Road	1708	1758
Eastham New Chester Road, Bridle Road	1712	1801
Bromborough Old Hall Road	1718	1807
Bromborough Pool Lane	1722	1814
New Ferry, New Chester Road, Bebington Road	1727	1818
Birkenhead Bus Station	1737	1828
Woodside Bus Station	1741	1833
Birkenhead 12 Quays Ferry Terminal	1746	1838
Duke Street, Cleveland Street	1750	1844
Bidston, Stanley Road, Hoylake Road	1753	1850
Hoylake Road, Hurrell Road	1756	1853
Moreton Cross, Hoylake Road	1801	1900
Leasowe Ross Avenue	1812	-

Monday to Friday (except Bank Holidays)

Dydd Llun i Gwener (heblaw Gwyliau Cyhoeddus)

Service Number/Rhif Gwasanaeth																			
Connah's Quay , Boathouse Inn	0520	0620	0720	0820	0920	1020	1220	1320	1420	1520	1620	1720	1820	1920	2020	2120	2220	2320	
Shotton, Chester Road West	0525	0625	0725	0825	0925	1025	1225	1325	1425	1525	1625	1725	1825	1925	2025	2125	2225	2325	
Shotton, Central Drive	0530	0630	0730	0830	0930	1030	1230	1330	1430	1530	1630	1730	1830	1930	2030	2130	2230	2330	
Queensferry, Station Road	0535	0635	0735	0835	0935	1035	1235	1335	1435	1535	1635	1735	1835	1935	2035	2135	2235	2335	
Garden City, Leprechaun	0540	0640	0740	0840	0940	1040	1240	1340	1440	1540	1640	1740	1840	1940	2040	2140	2240	2340	
D.I.P. (Zones 1 & 2), Parkway	0545	0645	0745	0845	0945	1045	1245	1345	1445	1545	1645	1745	1845	1945	2045	2145	2245	-	
D.I.P. (Zone 3), Tenth Avenue	0550	0650	0750	0850	0950	-	1250	1350	1450	1550	-	1750	1850	1950	2050	2150	2250	-	

D.I.P. (Zone 3), Tenth Avenue	0605	0705	0805	0905	1005	1305	1405	1505	1605	1705	1805	1905	2005	2105	2205	2305	-	-
D.I.P. (Zones 1 & 2), Parkway	0610	0710	0810	0910	1010	1310	1410	1510	1610	1710	1810	1910	2010	2110	2210	2310	-	-
Connah's Quay, Boathouse Inn	0620	0720	0820	0920	1020	1320	1420	1520	1620	1720	1820	1920	2020	2120	2220	2320	-	-
Shotton, Chester Road West	0625	0725	0825	0925	1025	1325	1425	1525	1625	1725	1825	1925	2025	2125	2225	2325	-	-
Shotton, Central Drive	0630	0730	0830	0930	1030	1330	1430	1530	1630	1730	1830	1930	2030	2130	2230	2330	-	-
Queensferry, Station Road	0635	0735	0835	0935	1035	1335	1435	1535	1635	1735	1835	1935	2035	2135	2235	2335	-	-
Garden City , Leprechaun	0640	0740	0840	0940	1040	1340	1440	1540	1640	1740	1840	1940	2040	2140	2240	2340	-	-

Saturdays only

Dydd Sadwrn yn unig

Service Number/Rhif Gwasanaeth											
Flint , Ship	0520	0620	0720	0820	1220	1320	1420	1520	1620	1720	
Connah's Quay, Boathouse Inn	0532	0632	0732	0832	1232	1332	1432	1532	1632	1732	
Shotton, Chester Road West	0535	0635	0735	0835	1235	1335	1435	1535	1635	1735	
Queensferry, Station Road	0540	0640	0740	0840	1240	1340	1440	1540	1640	1740	
Garden City, Leprechaun	0545	0645	0745	0845	1245	1345	1445	1545	1645	1745	
D.I.P. (Zones 1 & 2), Parkway	0550	0650	0750	0850	1250	1350	1450	1550	1650	1750	
D.I.P. (Zone 3), Tenth Avenue	0555	0655	0755	0855	1255	1355	1455	1555	1655	1755	

D.I.P. (Zone 3), Tenth Avenue	0605	0705	0805	0905	1305	1405	1505	1605	1705	1805	
D.I.P. (Zones 1 & 2), Parkway	0610	0710	0810	0910	1310	1410	1510	1610	1710	1810	
Flint , Ship	0620	0720	0820	0920	1320	1420	1520	1620	1720	1820	
Connah's Quay, Boathouse Inn	0632	0732	0832	0932	1332	1432	1532	1632	1732	1832	
Shotton, Chester Road West	0635	0735	0835	0935	1335	1435	1535	1635	1735	1835	
Queensferry, Station Road	0640	0740	0840	0940	1340	1440	1540	1640	1740	1840	
Garden City , Leprechaun	0645	0745	0845	0945	1345	1445	1545	1645	1745	1845	

Sundays only

Dydd Sul yn unig

Service Number/Rhif Gwasanaeth											
Flint , Ship	0520	0620	0720	0820	1220	1320	1420	1520	1620	1720	
Connah's Quay, Boathouse Inn	0532	0632	0732	0832	1232	1332	1432	1532	1632	1732	
Shotton, Chester Road West	0535	0635	0735	0835	1235	1335	1435	1535	1635	1735	
Queensferry, Station Road	0540	0640	0740	0840	1240	1340	1440	1540	1640	1740	
Garden City, Leprechaun	0545	0645	0745	0845	1245	1345	1445	1545	1645	1745	
D.I.P. (Zones 1 & 2), Parkway	0550	0650	0750	0850	1250	1350	1450	1550	1650	1750	
D.I.P. (Zone 3), Tenth Avenue	0555	0655	0755	0855	1255	1355	1455	1555	1655	1755	

D.I.P. (Zone 3), Tenth Avenue	0605	0705	1305	1405	1505	1605	1705	1805			
D.I.P. (Zones 1 & 2), Parkway	0610	0710	1310	1410	1510	1610	1710	1810			
Flint, Ship	0620	0720	1320	1420	1520	1620	1720	1820			
Connah's Quay, Boathouse Inn	0632	0732	1332	1432	1532	1632	1732	1832			
Shotton, Chester Road West	0635	0735	1335	1435	1535	1635	1735	1835			
Queensferry, Station Road	0640	0740	1340	1440	1540	1640	1740	1840			
Garden City , Leprechaun	0645	0745	1345	1445	1545	1645	1745	1845			

Monday to Friday (except Bank Holidays)

Dydd Llun i Gwener (heblaw Gwyliau Cyhoeddus)

Service Number/Rhif Gwasanaeth																		
Connah's Quay , Ffordd Llanarth	0525	0625	0725	0825	0925	1125	1225	1325	1425	1525	1625	1825	1925	2025	2125	2225		
Connah's Quay, Wepre Park	0530	0630	0730	0830	0930	1130	1230	1330	1430	1530	1630	1830	1930	2030	2130	2230		
D.I.P. (Zone 3), Tenth Avenue	0545	0645	0745	0845	0945	1145	1245	1345	1445	1545	1645	1845	1945	2045	2145	2245		
D.I.P. (Zones 1 & 2), Parkway	0550	0650	0750	0850	0950	1150	1250	1350	1450	1550	1650	1850	1950	2050	2150	2250		

												F						
D.I.P. (Zones 1 & 2), Parkway	0605	0705	0805	0905	1205	1305	1405	1505	1605	1705	1805	1905	2005	2105	2205	2305		
D.I.P. (Zone 3), Tenth Avenue	0610	0710	0810	0910	1210	1310	1410	1510	1610	1710	1810	1910	2010	2110	2210	2310		
Connah's Quay, Wepre Park	0620	0720	0820	0920	1220	1320	1420	1520	1620	1720	1820	1920	2020	2120	2220	2320		
Connah's Quay , Ffordd Llanarth	0625	0725	0825	0925	1225	1325	1425	1525	1625	1725	1825	1925	2025	2125	2225	2325		

F - Continues to Flint and Terminates at 18:45 Flint Cornist / Yn mynd ymlaen i'r Flint cyn gorffen am 18:45 yn Cornist y Flint

Monday to Friday (except Bank Holidays)

Dydd Llun i Gwener (heblaw Gwyliau Cyhoeddus)

Service Number/Rhif Gwasanaeth															
Flint , Cornist	0525	0625	0725	0825	1225	1325	1425	1525	1625	1825	1925	2025	2125	2225	
Flint, Ship	0533	0633	0733	0833	1233	1333	1433	1533	1633	1833	1933	2033	2133	2233	
Flint, Jones Motors/Spar Garage	0538	0638	0738	0838	1238	1338	1438	1538	1638	1838	1938	2038	2138	2238	
D.I.P. (Zone 3), Tenth Avenue	0548	0648	0748	0848	1248	1348	1448	1548	1648	1848	1948	2048	2148	2248	
D.I.P. (Zones 1 & 2), Parkway	0553	0653	0753	0853	1253	1353	1453	1553	1655	1855	1955	2055	2155	2255	

										UC					
D.I.P. (Zones 1 & 2), Parkway	0605	0705	0805	0905	1305	1405	1505	1605	1705	1805	1905	2005	2105	2205	2305
D.I.P. (Zone 3), Tenth Avenue	0610	0710	0810	0910	1310	1410	1510	1610	1710	1810	1910	2010	2110	2210	2310
Flint, The Swan	0620	0720	0820	0920	1320	1420	1520	1620	1720	1840	1920	2020	2120	2220	2320
Flint, Church Street (Library)	0622	0722	0822	0922	1322	1422	1522	1622	1722	1842	1922	2022	2122	2222	2322
Flint Cornist	0625	0725	0825	-	1325	1425	1525	1625	1725	1845	1925	2025	2125	2225	2325

UC - Operates via Upper Connah's Quay before serving Flint / Yn gweithredu yng Nghei Connah uchaf cyn gwasanaethu'r Fflint

Monday to Saturday (except Bank Holidays)

Dydd Llun i Sadwrn (heblaw Gwyliau Cyhoeddus)

Service Number/Rhif Gwasanaeth	DB1 NS	DB1	DB1	DB1	DB1	DB1	DB1	DB1	DB1	DB1 SDO	DB1 SSH	DB1	DB1
Mold Bus Station	-	-	-	-	1050	-	1250	-	1430	1450	-	1650	
Treuddyn	0657	-	0905	-	1105	-	1305	-	1445	1505	-	1705	
Caergwrle Post Office	0709	0742	0919	-	1119	-	1319	-	1459	1519	-	1719	
Hope Church	0712	0745	0922	-	1122	-	1322	-	1502	1522	-	1722	
Hope Castell Alun School	-	-	-	-	-	-	-	-	1525	-	-	-	
Higher Kinnerton Church	0719	0752	0927	-	1127	-	1327	-	1532	1527	-	1727	
Dodleston Primary School	0727	0800	0935	1035	1135	1235	1335	1435	1540	1535	1635	1735	
Westminster Park Shops	0735	0808	0947	1047	1147	1247	1347	1447	1552	1547	1647	1747	
Handbridge Edgar's Field	-	0815	0954	1054	1154	1254	1354	1454	1559	1554	1654	1754	
Chester Foregate Street†	0743	0822	1000	1100	1200	1300	1400	1500	1605	1600	1700	1800	
Chester Bus Interchange*	0746	0825	1003	1103	1203	1303	1403	1503	1608	1603	1703	1803	

Service Number/Rhif Gwasanaeth	DB1 NS	DB1	DB1	DB1	DB1	DB1	DB1	DB1	DB1	DB1	DB1	DB1
Chester Bus Interchange*	0746	0910	1010	1110	1210	1310	1410	1510	1610	1710	1810	
Chester Foregate Street	0749	0913	1013	1113	1213	1313	1413	1513	1613	1713	1813	
Handbridge Esso Garage	-	0919	-	1119	1219	1319	1419	1519	1619	1719	1819	
Westminster Park Shops	-	0926	-	1126	1226	1326	1426	1526	1626	1726	1826	
Dodleston Primary School	0806	0934	1030	1134	1234	1334	1434	1534	1634	1734	1834	
Higher Kinnerton Church	0814	0942	-	1142	-	1342	-	1542	-	1742	1842	
Hope Church	-	0947	-	1147	-	1347	-	1547	-	1747	1847	
Hope Castell Alun School	0830	-	-	-	-	-	-	-	-	-	-	
Caergwrle War Memorial	-	0950	-	1150	-	1350	-	1550	-	1750	1850	
Treuddyn	-	1004	-	1204	-	1404	-	1604	-	1804	1904	
Mold , Bus Station Stand 5	-	1019	-	1219	-	1419	-	1619	-	1819	1919	

*Please note that the opening of the new Chester Bus Interchange has been delayed until 5 June 2017. In the meantime this service will commence and terminate in Foregate Street until the new bus station is fully operational. / Mae agor Cyfnewidfa Bysiau Caer wedi ei ohirio tan 5 Mehefin 2017. Bydd y gwasanaeth hwn yn cychwyn ac yn gorffen yn y Foregate Street hyd nes bydd yr arsaf fysiau newydd yn gwbl weithredol. **NS** - Not Saturdays/ Dim ar ddydd Sadwrn **SSH** - Saturdays and School Holidays only/Dydd Sadwrn a Gwyliau Ysgol yn unig **SDO** - School Days only / Dyddiau Ysgol yn unig

Monday to Friday (except Bank Holidays)

Dydd Llun i Gwener (heblaw Gwyliau Cyhoeddus)

Service Number/Rhif Gwasanaeth	DB2	DB2	DB2	DB2	DB2	DB2
Saltney Ferry	0930	1030	1135	1240	1340	1440
Saltney High Street	0934	1034	1139	1244	1344	1444
Curzon Park	0938	1038	1143	-	-	-
Handbridge	0946	1046	1151	1253	1353	1453
Chester Foregate Street	0956	1056	1201	1303	1403	1503
Chester Bus Interchange*	0959	1059	1204	1306	1406	1506

Service Number/Rhif Gwasanaeth	DB2	DB2	DB2	DB2	DB2	DB2
Chester Bus Interchange*	1005	1105	1205	1310	1410	1510
Chester Foregate Street	1008	1108	1208	1313	1413	1513
Handbridge	-	1118	1218	1323	1423	1523
Curzon Park	-	1126	1226	1331	-	-
Saltney High Street	1021	1131	1231	1336	1432	1532
Saltney Ferry	1025	1135	1235	1340	1436	1536

*Please note that the opening of the new Chester Bus Interchange has been delayed until 5 June 2017. In the meantime this service will commence and terminate in Foregate Street until the new bus station is fully operational. / Mae agor Cyfnewidfa Bysiau Caer wedi ei ohirio tan 5 Mehefin 2017. Bydd y gwasanaeth hwn yn cychwyn ac yn gorffen yn y Foregate Street hyd nes bydd yr orsaf fysiau newydd yn gwbl weithredol.

Monday to Friday (except Bank Holidays)

Dydd Llun i Gwener (heblaw Gwyliau Cyhoeddus)

Service Number/Rhif Gwasanaeth	DB4	DB4		DB4
Chester Railway Station	0705	-	-	-
Chester Bus Interchange*	0710	0815	-	1655
Chester Garden Lane	0718	0823	-	-
Blacon Parade	0723	0828	-	-
Saughall	0727	0832	-	-
Sealand, Brooklyn Farm	0731	0836	-	1716
Deeside Industrial Park , First Avenue	0739	0844	-	1722

Service Number/Rhif Gwasanaeth	DB4	DB4	DB4	DB4
Deeside Industrial Park , First Avenue	0739	0844	1615	1732
Deeside Industrial Park, Tenth Avenue	0746	0851	1624	1739
Sealand, Brooklyn Farm	0751	-	1631	1746
Saughall	-	-	1634	1749
Blacon Parade	-	-	1638	1753
Chester Garden Lane	-	-	1643	1758
Chester Bus Interchange*	0813	-	1651	1806

*Please note that the opening of the new Chester Bus Interchange has been delayed until 5 June 2017. In the meantime this service will commence and terminate in Foregate Street until the new bus station is fully operational. / Mae agor Cyfnewidfa Bysiau Caer wedi ei ohirio tan 5 Mehefin 2017. Bydd y gwasanaeth hwn yn cychwyn ac yn gorffen yn y Foregate Street hyd nes bydd yr orsaf fysiau newydd yn gwbl weithredol.

Monday to Saturday (except Bank Holidays)

Dydd Llun i Sadwrn (heblaw Gwyliau Cyhoeddus)

Service Number/Rhif Gwasanaeth	SP1	SP1	SP1	SP1	VMC SP1	SP1
Mold Bus Station Stand 6	0715	0915	1115	1315	1540	1745
New Brighton	0720	0920	1120	1320	1545	1750
Mercia Inn	0722	0922	1122	1322	1551	1752
Nant Mawr Crescent	0726	0926	1126	1326	1555	1756
Buckley Precinct Way	0730	0930	1130	1330	1559	1759
Ewloe Boar's Head	0737	0937	1137	1337	1606	1806
Queensferry outside ASDA	0743	0943	1143	1343	1612	1812
Deeside Ind Park Zone 1 Post Box	0749	0949	1149	1349	1618	1818
Deeside Ind Park Zone 3 Toyota	-	-	-	-	-	1828
Cheshire Oaks	0759	0959	1200	1359	1628	1841
Ellesmere Port Bus Station	0806	1006	1207	1406	1633	1846

Service Number/Rhif Gwasanaeth	SP2	SP2	SP2	SP2	SP2	SP2
Mold Bus Station Stand 6	0615	0845	1045	1240	1440	1715
Buckley Cross	0623	0853	1053	1248	1448	1723
Ewloe Boar's Head	0630	0900	1100	1255	1455	1730
Queensferry outside ASDA	0633	0903	1103	1258	1458	1733
Deeside Ind Park Zone 1 Post Box	0639	0909	1109	1304	1504	1739
Deeside Ind Park Zone 3 Toyota	0647	0917	1117	1312	1512	1747
Cheshire Oaks	0700	0930	1130	1325	1525	1800
Ellesmere Port Bus Station	0705	0935	1135	1330	1530	1805

Service Number/Rhif Gwasanaeth	VMC SP1	SP1	SP1	SP1	SP1	SP1
Ellesmere Port Bus Station	0730	0940	1140	1340	1540	1815
Cheshire Oaks	0736	0945	1147	1345	1545	1820
Deeside Ind Park zone 3 Toyota	-	-	-	-	-	1837
Deeside Ind Park zone 1 Post box	0751	0957	1159	1357	1557	1842
Queensferry Asda	0805	1004	1208	1404	1604	1848
Ewloe Boar's Head	0813	1011	1215	1411	1611	1852
Buckley Precinct Way	0821	1019	1223	1419	1619	1859
Nant Mawr Crescent	0823	1021	1225	1421	1621	1901
Mercia Inn	0826	1026	1230	1426	1626	1905
New Brighton	0828	1028	1232	1428	1628	1907
Mold Bus Station	0833	1033	1237	1433	1633	1911

Service Number/Rhif Gwasanaeth	SP2	SP2	SP2	SP2	SP2	SP2
Ellesmere Port Bus Station	0615	0815	1015	1215	1415	1645
Cheshire Oaks	0620	0820	1022	1220	1420	1650
Deeside Ind Park zone 3 Toyota	0638	0838	1040	1238	1438	1708
Deeside Ind Park zone 1 Post box	0643	0843	1045	1243	1443	1713
Queensferry Asda	0650	0850	1052	1250	1450	1719
Ewloe Boar's Head	0656	0856	1058	1256	1456	1725
Buckley Cross	0706	0906	1108	1306	1506	1735
Mold Bus Station	0711	0911	1114	1311	1511	1740

Monday to Saturday (except Bank Holidays)

Dydd Llun i Sadwrn (heblaw Gwyliau Cyhoeddus)

Service Number/Rhif Gwasanaeth										SSH	SDO	
Greenfield , School Lane	0735	0835	0935	1035	1135	1235	1335	1435	1535	1605	1635	
Holywell Bus Station Stand 1	0745	0845	0945	1045	1145	1245	1345	1445	1545	1615	1645	
Bagillt Post Office	0751	0851	0951	1051	1151	1251	1351	1451	1551	1621	1651	
Flint Ship	0757	0857	0957	1057	1157	1257	1357	1457	1557	1627	1657	
Deeside College	0805	0905	1005	1105	1205	1305	1405	1505	1605	1635	1705	
Connah's Quay Boathouse	0808	0908	1008	1108	1208	1308	1408	1508	1608	1638	1708	
Shotton Chester Road West S2	0810	0910	1010	1110	1210	1310	1410	1510	1610	1640	1710	
Queensferry Station Road	0814	0914	1014	1114	1214	1314	1414	1514	1614	1644	1714	
Garden City P.O.	0818	0918	1018	1118	1218	1318	1418	1518	1618	1648	1718	
Greyhound Park (A548)	0826	0926	1026	1126	1226	1326	1426	1526	1626	1656	1726	
Chester Bus Exchange	0830	0930	1030	1130	1230	1330	1430	1530	1630	1700	1730	
Chester , Foregate Street Stop D	0835	0935	1035	1135	1235	1335	1435	1535	1635	1705	1735	
Chester , Foregate Street Stop D	0845	0945	1045	1145	1245	1345	1445	1545	1645	1710	1745	
Chester Bus Exchange	0900	1000	1100	1200	1300	1400	1500	1600	1700	1725	1800	
Greyhound Park (A548)	0904	1004	1104	1204	1304	1404	1504	1604	1704	1729	1804	
Garden City P.O.	0912	1012	1112	1212	1312	1412	1512	1612	1712	1737	1812	
Queensferry Station Road	0916	1016	1116	1216	1316	1416	1516	1616	1716	1741	1816	
Shotton Chester Road West S1	0920	1020	1120	1220	1320	1420	1520	1620	1720	1745	1820	
Connah's Quay Boathouse	0922	1022	1122	1222	1322	1422	1522	1622	1722	1747	1822	
Deeside College	0925	1025	1125	1225	1325	1425	1525	1625	1725	1750	1825	
Flint McDonalds	0933	1033	1133	1233	1333	1433	1533	1633	1733	1758	1833	
Bagillt Post Office	0939	1039	1139	1239	1339	1439	1539	1639	1739	1804	1839	
Holywell Bus Station Stand 3	0945	1045	1145	1245	1345	1445	1545	1645	1745	1810	1845	
Greenfield , School Lane	0950	1050	1150	1250	1350	1450	1550	1650	1750	1815	1850	

SSH - Saturdays and School Holidays Only / Dydd Sadwrn a Gwyliau Ysgol yn unig SHO - Gwyliau Ysgol yn unig / School Holidays only

SDO - Dyddiau Ysgol yn unig / School Days only.

Monday to Saturday (except Bank Holidays)

Dydd Llun i Sadwrn (heblaw Gwyliau Cyhoeddus)

Service Number/Rhif Gwasanaeth	NS		SSH		
Higher Kinnerton, Sandy Lane	0740	0955	1155	1310	1525
Higher Kinnerton, Bennetts Lane	0745	1000	1200	1315	1530
Broughton Village Shops	-	-	-	1325	1540
Broughton Retail Park	0800	1015	1215	1330	1545

Service Number/Rhif Gwasanaeth	SSH		
Broughton Retail Park	1230	1500	1715
Broughton Village Shops	-	-	1720
Higher Kinnerton, Sandy Lane	1245	1515	1725
Higher Kinnerton , Bennetts Lane	1250	1520	1730

Timetables Online

You can find all the latest bus timetables for Flintshire online by visiting: www.flintshire.gov.uk/publictransport

You can also plan your journey using public transport in Flintshire and the rest of Wales by using Traveline's Journey Planner at: <http://www.traveline-cymru.info/>

Amserlenni ar-lein

Gallwch weld yr holl amserlenni bws diweddaraf ar gyfer Sir y Fflint ar-lein os ewch i: www.flintshire.gov.uk/publictransport

Gallwch hefyd gynllunio'ch taith ar drafnidiaeth gyhoeddus yn Sir y Fflint a gweddill Cymru drwy fynd i wefan Traveline Cymru: <http://www.traveline-cymru.info/>

Bus Times to Your Mobile Phone

As well as contacting Traveline Cymru by phone or the internet, you can now get bus times on your mobile phone through FREE applications for iPhone and Android with Traveline NextBuses and Traveline.txt.

NextBuses.mobi

Go to <http://nextbuses.mobi/> on your mobile web browser (to receive a bookmark for this service, text 'traveline' to 84268). The site will show the next few departures from the selected stop. Live information is shown where available, otherwise scheduled times are given. This service is free apart from any normal data charges made by your mobile operator (contact your operator for details).

continued...

Amseroedd bysiau ar eich ffôn symudol

Yn ogystal â chysylltu â Traveline Cymru dros y ffôn neu drwy'r rhyngwyd, gallwch gael amseroedd bysiau ar eich ffôn symudol drwy Aps Traveline NextBuses a Traveline.txt sydd ar gael AM DDIM ar gyfer yr iPhone ac Android.

NextBuses.mobi

Ewch i <http://nextbuses.mobi/> ar borwr eich ffôn symudol (i gael nod tudalen y gwasanaeth hwn, tecstiwch 'traveline' i 84268). Bydd y safle'n dangos pryd y bydd y bysiau nesaf yn gadael safle bws penodol. Dangosir gwybodaeth fyw os yw ar gael neu, fel arall, nodir yr amseroedd ar yr amserlen. Mae'r gwasanaeth hwn am ddim ar wahân i unrhyw daliadau arferol am ddata y mae gweithredwr eich ffôn yn eu codi (cysylltwch â'r gweithredwr i gael y manylion).

parhad...

Bus Times to Your Mobile Phone (continued)

Traveline.txt

There are over 21,000 bus stops in Wales and each one has a unique seven letter code. To find out what your bus stop code is simply look at the bus stop, where the code will be displayed or visit the Traveline Cymru website at www.traveline-cymru.info and click on 'Find Your Bus Stop.'

Alternatively you can call Traveline Cymru on 0800 464 00 00 (calls are free from a BT land line, other networks and mobiles may be significantly more).

Next, all you need to do is send the bus stop code as a text message to the Traveline text number 84268 (charged at normal tariff). You will then receive a free reply via a text message within 30 seconds showing:

- The times of up to the next four buses due at that particular stop
- The service number of each bus
- The destination of each bus

QR Codes

This publication uses QR (Quick Response) Codes.

If you have a smartphone with a barcode scanning app you can scan this code and it will take you to the relevant content on our website.

You can use this to view timetables or save the file to your smartphone for future reference.

Amseroedd bysiau ar eich ffôn symudol (parhad)

Traveline.txt

Mae dros 21,000 o safleoedd bws yng Nghymru ac mae gan bob un ohonynt god saith llythyren unigryw. Mae cod eich safle bws chi i'w weld ar y safle bws ei hun neu ewch i wefan Traveline Cymru, sef www.traveline-cymru.info a chliciwch ar 'cael hyd i'r Safle Bws'.

Neu, gallwch ffonio Traveline Cymru ar 0800 464 00 00 (mae galwadau am ddim o linell dir BT, gall rhwydweithiau eraill a ffonau symudol fod yn llawer mwy).

Yna, y cyfan y mae angen i chi ei wneud yw anfon cod y safle bws fel neges destun i rif Traveline 84268 (pris arferol). Yna, cewch neges destun di-dâl ymhen 30 eiliad yn dangos:

- Amseroedd y pedwar bws nesaf a fydd yn stopio yn y safle arbennig hwnnw
- Rhif gwasanaeth pob bws
- Lle mae pob bws yn mynd

Codau QR

Mae'r cyhoeddiad hwn yn defnyddio Codau QR (ymatebion cyflym).

Os oes gennych ffôn clyfar sydd ag app i sganio cod bar, gallwch sganio'r cod hwn a bydd yn mynd â chi i'r dudalen berthnasol ar ein gwefan.

Gallwch ddefnyddio hwn i edrych ar amserlenni neu i arbed y ffeil ar eich ffôn i'w defnyddio rywdro eto.

Bus Stops & Shelters

Bus shelters are provided where there is a proven demand and where there is enough space taking into account minimum footpath width requirements and road/traffic safety requirements.

Bus stop poles and signs are provided county wide, and many of these poles are also furnished with a timetable case containing an up-to-date list of departure times for that particular bus stop.

If you have any concerns regarding a bus shelter or bus stop, or if you would like to report vandalism or damage, please call Streetscene on 01352 701234 with as much detail as possible including details of the stop location.

Safleoedd a chysgodfannau bws

Os oes digon o alw ac os oes digon o le, gan gofio am y gofynion o ran lled llwybrau troed a gofynion diogelwch ffyrdd/traffig, codir cysgodfannau bws.

Gosodir polion ac arwyddion safleoedd bws drwy'r sir, ac ar nifer o'r polion hyn, bydd amserlen yn cynnwys rhestr gyfredol o amseroedd y gwasanaethau bws ar gyfer y safle bws penodol hwnnw.

Os oes gennych unrhyw bryderon yn ymwneud â chysgodfan neu safle bws, neu os ydych am roi gwybod am fandaliaeth neu ddifrod, ffoniwch Gwasanaethau Stryd ar 01352 701234 gan roi gymaint o fanylion â phosib gan gynnwys lleoliad y safle bws dan sylw.

Bus Services on Public Holidays

On Public Holidays, most bus services operate to a SUNDAY timetable.

Buses do not normally operate on Christmas Day, Boxing Day or New Year's Day.

On Christmas Eve and New Year's Eve, bus services finish earlier than usual at about 2000 hours.

Gwasanaethau Bws yn Ystod Gwyliau Cyhoeddus

Ar wyliau cyhoeddus, mae'r rhan fwyaf o wasanaethau bws yn cadw at amserlen DYDD SUL. Nid yw bysus yn rhedeg fel arfer ar ddydd Nadolig, Gŵyl San Steffan na dydd Calan.

Ar Noswyl Nadolig a Nos Galan, mae'r gwasanaethau bws yn gorffen yn gynt nag arfer, am tua 20:00.

School Days in Flintshire

To avoid confusion, buses shown in the timetable as operating on school days normally run from Monday to Friday during the following periods:

Summer Term 2017

24 April 2017 - 26 May 2017
(Excluding May Day: 1 May 2017)
5 June 2017 - 21 July 2017

Autumn Term 2017

1 September 2017 - 27 October 2017
6 November 2017 - 22 December 2017

Spring Term 2018

8 January 2018 - 9 February 2018
19 February 2018 - 23 March 2018

Diwrnodau ysgol yn Sir y Fflint

Os yw'r amserlen yn dangos bod bws yn rhedeg ar ddiwrnodau ysgol, bydd yn rhedeg fel arfer o ddydd Llun i ddydd Gwener yn ystod y cyfnodau a ganlyn:

Tymor yr Haf 2017

24 Ebrill 2017 - 26 Mai 2017
(ac eithrio Calan Mai: 1 Mai 2017)
5 Mehefin 2017 - 21 Gorffennaf 2017

Tymor yr Hydref 2017

1 Medi 2017 - 27 Hydref 2017
6 Tachwedd 2017 - 22 Rhagfyr 2017

Tymor yr Gwanwen 2018

8 Ionawr 2018 - 9 Chwefror 2018
19 Chwefror - 23 Mawrth 2018

Free Concessionary Bus Travel

You may be entitled to free concessionary travel on bus services in Flintshire and the rest of Wales if you are a permanent Flintshire resident AND if you are:

- Aged 60 or over
- In receipt of certain disability benefits
- Blind or partially sighted
- Profoundly or severely deaf
- Without speech
- Learning disabled
- Unable to drive owing to a medical condition.

Please see our separate leaflet or the Flintshire website for more details.

www.flintshire.gov.uk/travel

LARGER PRINT TIMETABLES
If you require a larger print timetable, please telephone the Flintshire Contact Centre on 01352 701234

Teithio ar y bws am ddim

Mae'n bosibl y cewch deithio ar y bws am ddim ar wasanaeth bws yn Sir y Fflint a gweddill Cymru os ydych yn byw'n barhaol yn Sir y Fflint yn bodloni'r amodau a ganlyn:

- Rydych yn 60 oed neu'n hŷn
- Rydych yn cael rhai budd-daliadau anabledd penodol
- Rydych yn ddall neu'n rhannol ddall
- Rydych yn ddiifrifol neu'n hollol fyddar
- Nid ydych yn gallu siarad
- Mae gennych anabledd dysgu
- Nid ydych yn gallu gyrru oherwydd rhyw gyflwr meddygol.

Darllenwch y daflen berthnasol neu edrychwch ar wefan Sir y Fflint i gael rhagor o fanylion.

www.siryfflint.gov.uk/teithio

AMSERLENNI MEWN PRINT
BRAS Os oes angen amserlen print bras arnoch, ffoniwch Contact Centre Sir y Fflint ar 01352 701234

Ticketing

Please note that some tickets may change from the 2nd January 2018.

Ticket Interavailability

As a general rule, return tickets are NOT interchangeable between bus operators.

There are certain exceptions to this for return tickets on some subsidised journeys; this will be shown on the relevant timetable page.

Day Tickets

There are various day tickets available depending on where you wish to travel and with which bus operator. Some bus operators issue day tickets that are only valid on their own services. It is advisable to check ticket availability in advance. Day Tickets can be bought from the driver on the first bus you board and are usually valid until 2359 that day. The BwsAbout day ticket allows unlimited travel on subsidised services operated by various operators in Flintshire and Denbighshire for £5.50 (Adults); £2.50 (Young Person, 5 to 21); £2.80 (OAP); £12 (Family); £25 (Adult Week); £12 (Young Person Week). See the separate BwsAbout leaflet for more details and fare prices.

The DeeRover day ticket allows unlimited travel on subsidised services operated by various operators throughout the Deeside area for £4.30 (Adult); £2.20 (Children); £2.20 (OAP). See the separate DeeRover leaflet for more details and fare prices.

Tocynnau

Nodwch os gwelwch yn dda fod rhai tocynnau yn newid o'r 2ail Ionawr 2018.

Cyfnewid tocynnau

Fel rheol gyffredinol, NI allwch gyfnewid tocynnau dwyffordd rhwng gwahanol weithredwyr bws.

Mae rhai eithriadau i'r rheol hon yn achos tocynnau dwyffordd ar gyfer rhai siwrneiau sy'n rhan o gynllun cymhorthdal; bydd hyn wedi'i nodi ar y dudalen berthnasol yn yr amserlen.

Tocyn diwrnod

Mae amrywiol docynnau diwrnod ar gael gan ddiabyddu i ble rydych am deithio a chyda pha weithredwr. Bydd rhai gweithredwyr bws yn dosbarthu tocynnau diwrnod sy'n ddilys ar eu gwasanaethau nhw'n unig. Byddai'n syniad da sicrhau bod tocynnau ar gael ymlaen llaw. Gallwch brynu tocynnau diwrnod gan yrwr y bws cyntaf y byddwch yn ei ddefnyddio ac, fel arfer, byddwch yn gallu parhau i'w ddefnyddio tan 2359 y diwrnod hwnnw.

Drwy brynu tocyn diwrnod BwsAbout, gallwch deithio faint fynnwch chi ar fws gwasanaeth sy'n derbyn cymhorthdal yn Sir y Fflint a Sir Ddinbych am £5.50 (oedolion); £2.50 (Pobl ifanc, 5 i 21); £2.80 (Pensiynwyr); £12.00 (Teulu); £25 (Ticed Wythnos Oedolion); £12.00 (Ticed Wythnos Pobl Ifanc). Darllenwch daflen BwsAbout i gael rhagor o wybodaeth a phrisiau.

Drwy brynu tocyn diwrnod DeeRover, gallwch deithio faint fynnwch chi ar fws gwasanaeth sy'n derbyn cymhorthdal yn ardal Glannau Dyfrdwy a hynny am £4.30 (oedolion); £2.20 (plant); £2.20 (pensiynwyr). Darllenwch daflen DeeRover i gael rhagor o wybodaeth a phrisiau.

Ticketing (continued)

North Wales Rover

The North Wales Rover ticket is available for travel by bus and train within North Wales and Chester. Tickets are available from staffed stations or from the drivers of participating bus companies for use on all trains and most bus services throughout Anglesey, Conwy, Denbighshire, Flintshire, Gwynedd and Wrexham.

North Wales Rover is also valid on services outside the area to various places including Chester City Centre (not valid on railway station link bus service), Chester Business Park, Ellesmere Port (bus services SP1/SP2 only), Machynlleth and Aberystwyth (buses X28, T2 and trains only).

2 zones Adult £13.00 - Child £6.50

3 zones: Adult £22.00 - Child £11.00

All zones: Adult £38.00 - Child £19.00 Available at railway station only. (Prices valid to 31st December 2017)

Explore Wales Pass

The Explore Wales Pass gives unlimited access to all of Wales' mainline train services and many bus routes across the country. Valid on trains throughout Wales including to/from Crewe and Shrewsbury; on the Ffestiniog Railway and the Welsh Highland Railway; and on all buses in North and Mid Wales as well as most buses in South Wales. You can purchase an Explore Wales Pass at any railway station

www.arrivatrainswales.co.uk/ExploreWales/

continued...

Tocynnau (parhad)

Tocyn Crwydro'r Gogledd

Mae Tocyn Crwydro'r Gogledd yn caniatáu i chi deithio ar y bws a'r trê'n yn ardal Gogledd Cymru a Chaer. Mae'r tocyn ar gael mewn gorsafoedd sydd â staff neu gan yrwy'r cwmnïau bws sy'n rhan o'r cynllun a chewch ei ddefnyddio ar y rhan fwyaf o wasanaethau trê'n a bws yn Ynys Môn, Conwy, Sir Ddinbych, Sir y Fflint, Gwynedd a Wrecsam.

Gallwch ddefnyddio tocyn Crwydro'r Gogledd hefyd y tu allan i'r ardal i wahanol lefydd gan gynnwys Canol Dinas Caer (ond ni allwch ei ddefnyddio ar wasanaethau bws rhwng gorsafoedd trê'n), Parc Busnes Caer, Ellesmere Port (gwasanaethau bws SP1/SP2 yn unig), Machynlleth ac Aberystwyth (bysiau X28, T2 a threnau'n unig).

2 ardal: Oedolyn £13.00 - Plentyn £6.50

3 ardal: Oedolyn £22.00 - Plentyn £11.00

Pob ardal: Oedolyn £38.00 - Plentyn £19.00 Ar gael o'r orsaf rheilffordd. (Prisiau'n ddilys tan 31 Rhagfyr 2017)

Tocyn Archwilio Cymru

Mae Tocyn Archwilio Cymru yn caniatáu i chi ddefnyddio'r holl wasanaethau trê'n sy'n dilyn prif lwybrau Cymru a llawer o lwybrau bws ar hyd y lled y wlad. Gallwch ddefnyddio'r tocyn drwy Gymru gyfan gan gynnwys i/o Crewe ac Amwythig; a Rheilffordd Ffestiniog a Rheilffordd Ucheldir Cymru; ac ar yr holl fysiau yng ngogledd a chanolbarth Cymru yn ogystal â'r rhan fwyaf o fysiau yn ne Cymru. Gallwch brynu tocyn mewn unrhyw orsaf rheilffordd

www.arrivatrainswales.co.uk/ExploreWales/

parhad...

Ticketing (continued)

Plus Bus

Plus Bus is an add-on bus fare to either or both ends of your rail journey, at participating stations. It gives unlimited access to most local bus journeys for the whole day. Locally, it is available in Rhyl, Prestatyn, and Wrexham on Arriva buses. For information about other stations on the UK rail network see www.plusbus.org.uk

Cymru Connect

Cymru Connect is a Welsh Government funded scheme allowing you to travel to anywhere in Wales formerly not accessible by train, using one through rail ticket. Through a partnership between Arriva Trains Wales and bus operators in Wales, Cymru Connect allows you to book a ticket at a UK rail station* and travel from point A to point B in Wales using a combination of rail and bus in one single transaction**. Cymru Connect integrates rail and bus journeys across Wales to provide a joined up offering.

You can purchase a Cymru Connect ticket at any rail station in the same way you would purchase any other rail ticket***. You will need to present the rail part of your ticket to the ticket inspector on the train, and the bus part of the ticket to the driver on the bus in order to make your journey. You can either call Traveline on 0800 464 0000**** and speak to a friendly bilingual call centre agent or log on to the website www.traveline-cymru.info and plan your journey online.

*Cymru Connect tickets cannot be bought on the bus

***Cymru Connect tickets cannot be bought online or by telephone

****Open 7am-10pm daily apart from Christmas Day when closed and Christmas Eve, Boxing Day, New Year's Eve and New Year's Day when a reduced service is provided. Calls cost 10p per minute plus network extras.

Tocynnau (parhad)

Plus Bus

Tocyn bws i'w ychwanegu at eich taith ar y trêen yw Plus Bus, i'w defnyddio yn y gorsafoddedd sy'n rhan o'r cynllun. Cewch ddefnyddio'r rhan fwyaf o'r gwasanaethau bws lleol drwy gydol y dydd. Mae ar gael yn lleol yn y Rhyl, Prestatyn a Wrecsam ar fysiau Arriva. I gael gwybodaeth am orsafoddedd eraill ar rwydwaith rheilffyrdd y DU gwelwch www.plusbus.org.uk

Cymru Connect

Cynllun a noddir gan Lywodraeth Cymru yw Cymru Connect ac mae'n caniatáu i chi deithio i unrhyw le yng Nghymru nad oedd modd teithio yno gynt ar y trêen, gan ddefnyddio un tocyn rheilffordd drwodd. Drwy bartneriaeth rhwng Trenau Arriva Cymru a gweithredwyr bysiau, mae Cymru Connects yn caniatáu i chi neilltuo tocyn mewn unrhyw orsaf rheilffordd yn y DU* a theithio o bwynt A i bwynt B yng Nghymru drwy gyfuno taith ar y trêen a thaith ar y bws a hynny drwy brynu un tocyn yn unig**.

Mae Cymru Connect yn integreiddio siwrneiau ar drên ac ar fws ar hyd a lled Cymru i gynnig taith gydgyssylltiedig. Gallwch brynu tocyn Cymru Connect mewn unrhyw orsaf rheilffordd yn yr un modd ag y byddech yn prynu unrhyw docyn rheilffordd arall***. Bydd angen i chi roi'r rhan honno o'r tocyn sy'n ymwneud â'r rheilffordd i'r swyddog tocynnau ar y trêen, a rhoi'r rhan honno o'r tocyn sy'n ymwneud â'r bws i yrwr y bws. Gallwch naill ai ffonio Traveline ar 0800 464 0000**** a siarad ag asiant dwyieithog, cyfeillgar mewn canolfan alwadau neu fewngofnodi ar y wefan, sef www.traveline-cymru.info a chynllunio'ch siwrnai ar-lein.

*Ni allwch brynu tocynnau Cymru Connect ar y bws

***Ni allwch brynu tocynnau Cymru Connect ar-lein na dros y ffôn

****Ar agor 7am-10pm bob dydd ac eithrio Dydd Nadolig a dim ond gwasanaeth cyfyngedig sydd ar gael Noswyl Nadolig, Gŵyl San Steffan, Nos Galan a Dydd Calan.

Easy Access Buses

Virtually all Flintshire bus services now offer low floor, easy access buses. However, there may be times when an operator needs to substitute a conventional bus owing to maintenance or vehicle testing and it is always advisable to check with the relevant operator before travelling.

Lost Property

If you think you may have left an item on a bus, please contact the bus company concerned. The company name is shown on your ticket, and the contact numbers for all bus operators in Flintshire are listed on the rear cover of this publication. If your property is located it is your responsibility to collect it from the relevant depot.

Complaints and Comments

Compliments, comments and complaints from you, our customer, helps us to improve our services now and in the future.

If you have reason to complain about a bus service, it is best in the first instance to contact the bus company directly involved. However, if you feel that you have not been dealt with fairly or you are dissatisfied with the bus company's response, you can either contact the Council for subsidised services or Bus Users UK for commercial services and they will investigate the complaint on your behalf.

continued...

Bysiau hygrych

Mae bron pob gwasanaeth bws yn Sir y Fflint bellach yn cynnig bysus llawr isel, hawdd mynd arnynt. Fodd bynnag efallai y bydd yna adegau pan fydd gweithredwr angen newid bws confensiynol oherwydd gwaith cynnal a chadw neu gynnal prawf ar y cerbyd ac mae'n ddoeth cysylltu â'r gweithredwr perthnasol cyn teithio bob amser.

Eiddo coll

Os ydych yn meddwl eich bod wedi gadael eitem ar fws, cysylltwch â'r cwmni perthnasol. Bydd enw'r cwmni ar eich tocyn, ac mae rhif ffôn pob cwmni bws yn Sir y Fflint wedi rhestru yng nghefn y llyfryn hwn. Os ceir hyd i'r eitem, eich cyfrifoldeb chi yw ei chasglu o'r depo perthnasol.

Cwynion a sylwadau

Mae'ch cwynion a'ch sylwadau chi, ein cwsmeriaid, yn ein helpu ni i wella'n gwasanaethau yn awr ac yn y dyfodol.

Os oes gennych reswm i gwyno am wasanaeth bws, mae'n well cysylltu â'r cwmni bws yn uniongyrchol i ddechrau. Os ydych yn teimlo na chwsoch eich trin yn deg, fodd bynnag, neu os nad ydych yn fodlon ar ymateb y cwmni bws, gallwch gysylltu â'r Cyngor os ydych yn cwyno am wasanaethau y mae'n rhoi cymhorthdal iddo, neu cysylltwch â Bus Users UK os yw'r gwasanaeth yn un masnachol a byddant yn ymchwilio i'ch cwyn ar eich rhan.

parhad...

Complaints and Comments (continued)

Bus Users UK (Wales / Cymru)

P.O. Box 1045
Cardiff CF11 1JE
Tel: 029 2022 1370 / 0300 111 0001
E-mail: wales@bususers.org

Flintshire County Council also has a dedicated Customer Services Team who can deal with enquiries and monitor complaints from start to finish.

If you wish to contact us you can either:

Email us: customerservices@flintshire.gov.uk

Write to us:

CUSTOMER SERVICES TEAM
Flintshire County Council
FREEPOST, NWW 15332
Mold, Flintshire CH7 6ZY

Telephone us: 01352 703020

Cwynion a sylwadau (parhad)

Bus Users UK (Wales / Cymru)

Blwch SP 1045
Caerdydd CF11 1JE
Rhif ffôn: 029 2022 1370 / 0300 111 0001
E-bost: wales@bususers.org

Mae gan Gyngor Sir y Fflint hefyd Dîm Gwasanaethau Cwsmeriaid i ymdrin ag ymholiadau ac i fonitro cwynion o ddechrau'r broses tan ei diwedd.

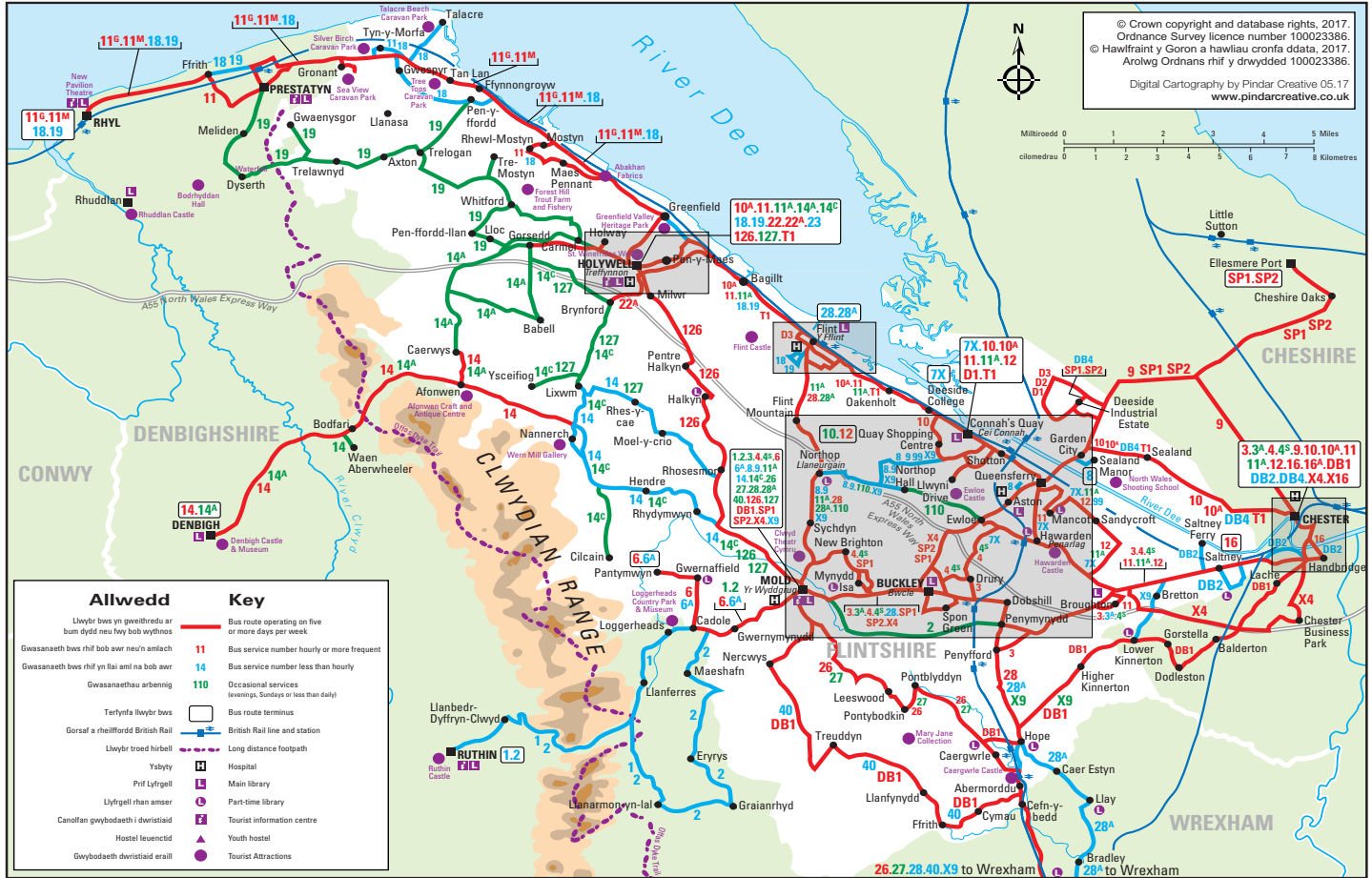
Os hoffech gysylltu â ni, gallwch naill ai:

Anfon e-bost atom: customerservices@flintshire.gov.uk

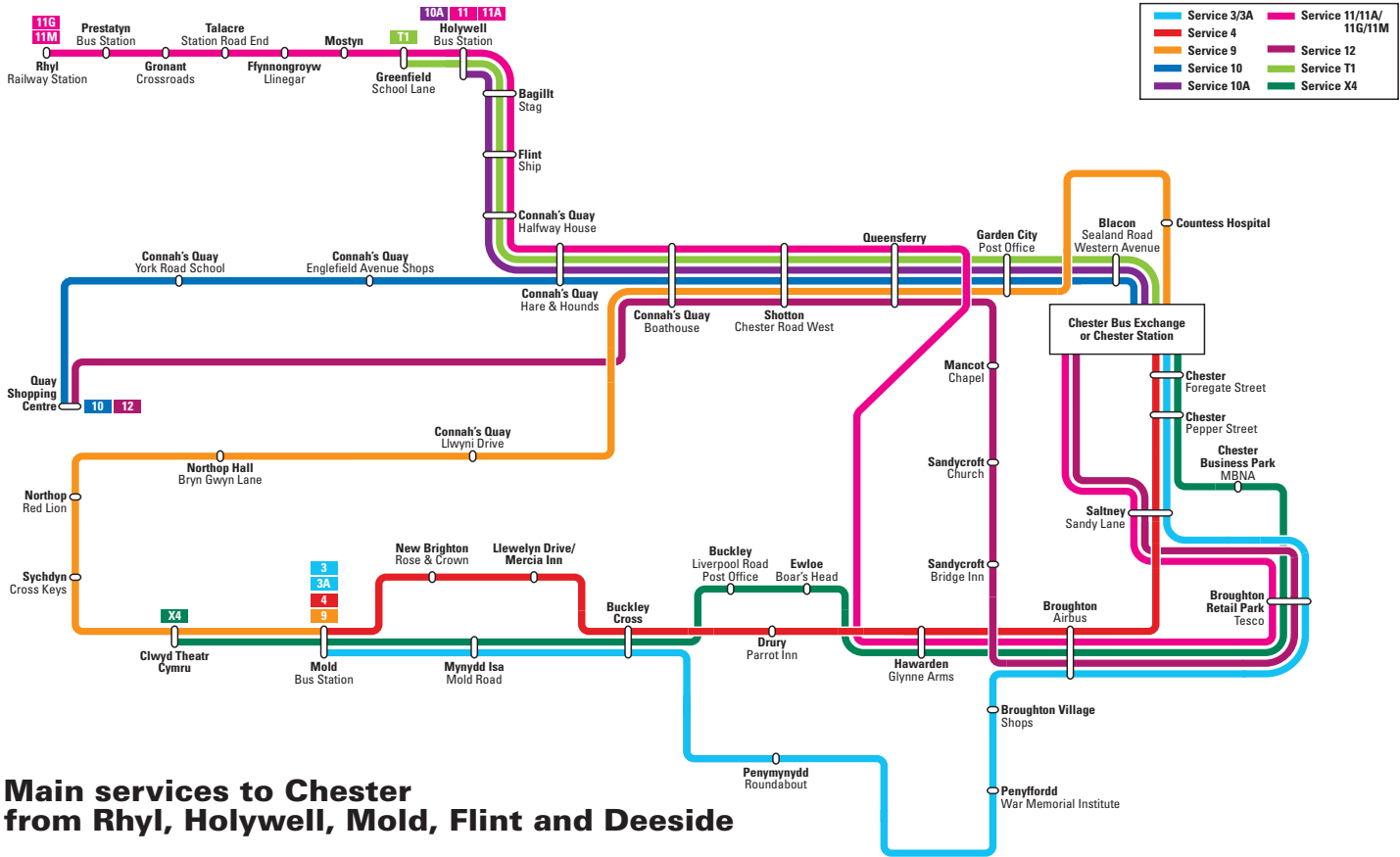
Ysgrifennu atom:

Y TÎM GWASANAETHAU CWSMERIAID
Cyngor Sir y Fflint
RHADBOST, NWW 15332
Yr Wyddgrug, Sir y Fflint CH7 6ZY

Ein ffonio ni: 01352 703020



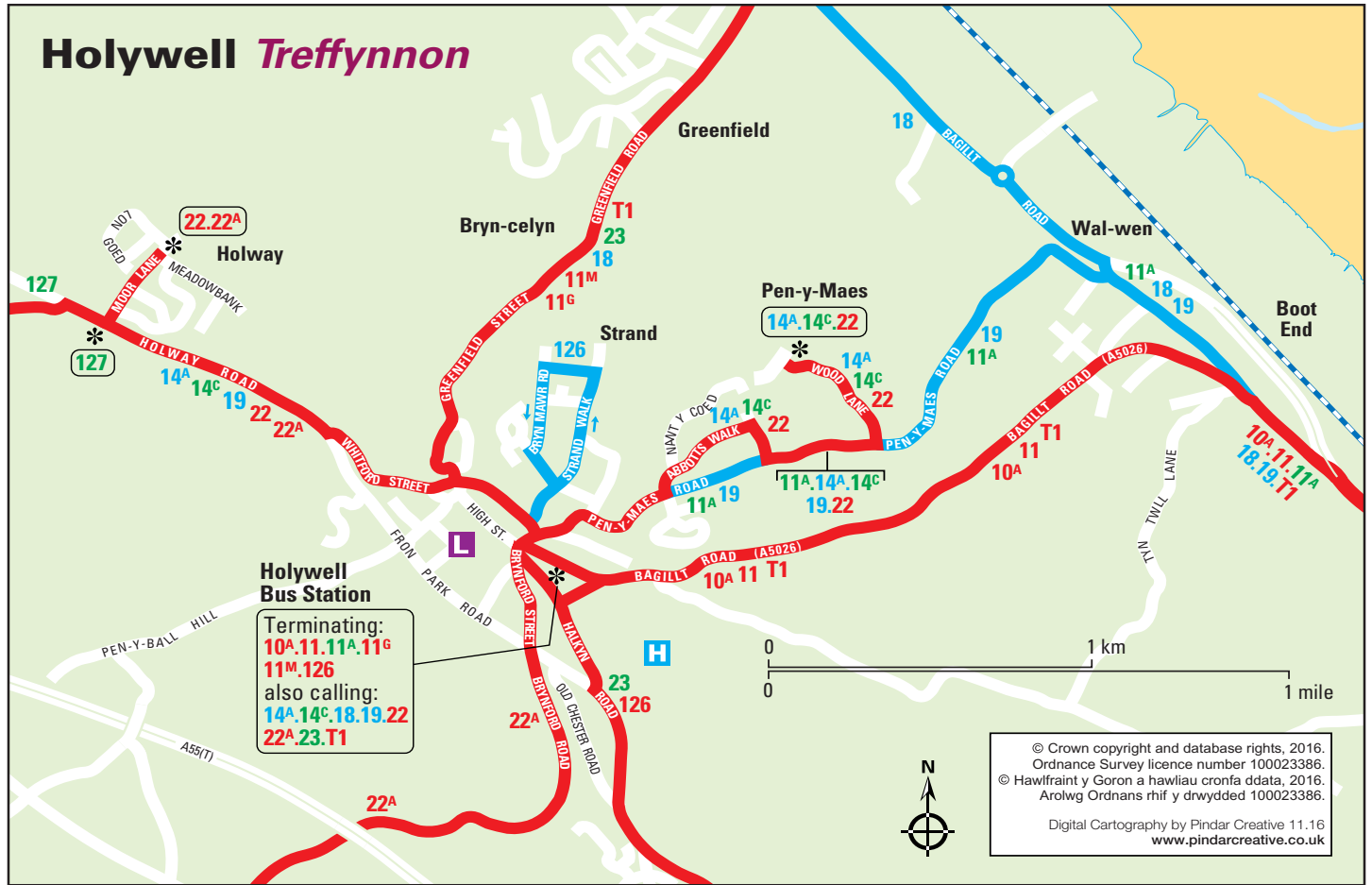




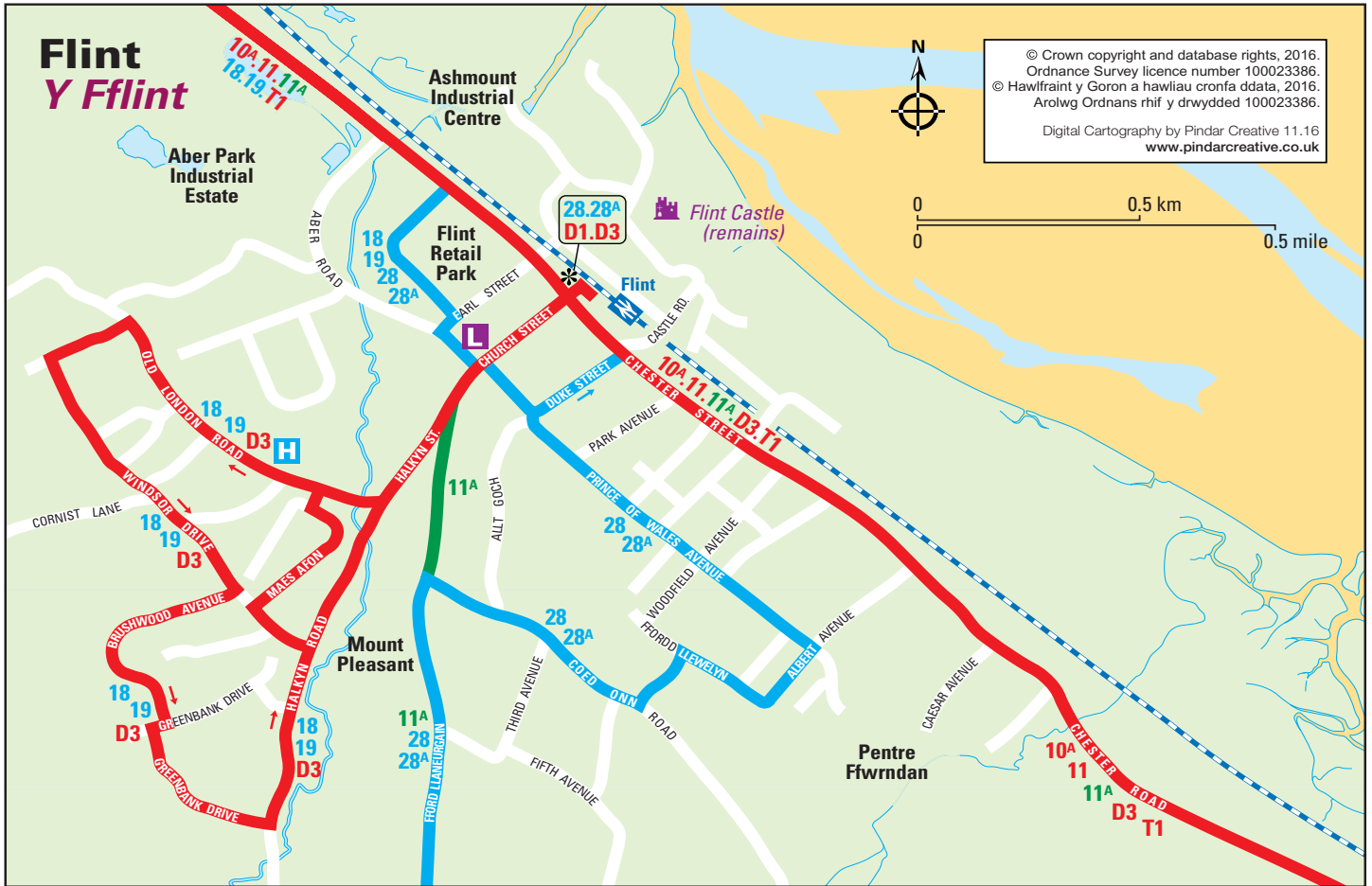
Main services to Chester from Rhyl, Holywell, Mold, Flint and Deeside

Prif wasanaethau i Gaer o'r Wyddgrug, Rhyl, Treffynnon y Fflint a Glannau Dyfrdwy

Holywell Treffynnon



Flint Y Fflint



Monday to Saturday

Dydd Llun i Sadwrn

Service Number/Rhif Gwasanaeth	*	*	BHX	BHX	BHX	BHX	BHX	BHX	BHX	BHX	BHX	BHX	BHX	BHX	BHX	BHX	BHX
Liverpool Central/Canolog Lerpwl	-	-	0655	0810	0910	1010	1110	1210	1310	1410	1510	1610	1725	1825	2035	2235	
James Street	-	-	0657	0812	0912	1012	1112	1212	1312	1412	1512	1612	1727	1827	2037	2237	
Bidston	-	-	0731	0831	0932	1032	1132	1232	1332	1432	1532	1635	1745	1846	2056	2256	
Upton	-	-	0732	0832	0933	1033	1133	1233	1333	1433	1533	1636	1746	1847	2057	2257	
Heswall	-	-	0739	0839	0940	1040	1140	1240	1340	1440	1540	1643	1753	1854	2104	2304	
Neston	-	-	0744	0844	0945	1045	1145	1245	1345	1445	1545	1648	1758	1859	2109	2309	
Hawarden Bridge	-	-	0753x	0853x	-	-	-	-	-	-	-	1657	1807x	-	-	-	
Shotton Low Level d	0522	0648	0804	0932	1012	-	-	-	-	-	-	-	-	-	-	-	
Shotton High Level a	-	-	0755	0855	0955	1055	1155	1255	1355	1455	1555	1659	1809	1909	2119	2320	
Rhyl a	-	-	0829	0957	1037	-	1229	1330	1429	1529	1629	1728	1858	2006	2238	-	
Rhyl d	-	-	0715	0813	0913	1013	1112	1212	1312	-	1508	1536	1733	-	2010	2216	
Shotton High Level d	-	-	0755	0855	0955	1055	1155	1255	1355	1455	1555	1659	1809	1909	2119	2320	
Penarlôg/Hawarden	-	-	0800	0900	1000	1100	1200	1300	1400	1500	1600	1704	1814	1914	2124	2325	
Bwcle/Buckley	-	-	0805	0905	1005	1105	1205	1305	1405	1505	1605	1709	1819	1919	2129	2330	
Penyffordd	-	-	0808	0908	1008	1108	1208	1308	1408	1508	1608	1712	1822	1922	2132	2333	
Yr Hôb/Hope	-	-	0812	0912	1012	1112	1212	1312	1412	1512	1612	1716	1826	1926	2136	2337	
Caergwrle	-	-	0814	0914	1014	1114	1214	1314	1414	1514	1614	1718	1828	1928	2138	2339	
Cefn-y-Bedd	-	-	0816	0916	1016	1116	1216	1316	1416	1516	1616	1720	1830	1930	2140	2341	
Gwersyllt	-	-	0820	0920	1020	1120	1220	1320	1420	1520	1620	1724	1834	1934	2144	2347	
Cyffredinol Wrexham General a	0603	0731	0827	0927	1027	1127	1227	1327	1427	1527	1627	1731	1841	1941	2151	2354	
Shrewsbury a	0716	0807	0913	1022	1114	1229	1314	1427	1513	1629	1714	1827	2014	-	2323	-	
Canolog Wrexham Central	-	-	0832	0932	1032	1132	1232	1332	1432	1532	1632	1736	1846	1946	2156	-	

BHX - Train does not run on Bank Holidays/Nid yw'r gwasanaeth yn gweithredu ar Wyliau Cyhoeddus **c** - Connection times vary/Gall amseroedd cysylltiadau amrywio **d** - Departure time/Amser gadel **a** - Arrival time/Amser cyrraedd **x** - Stops on request/Bydd y tren yn galw ar gais unig **SX** - Except Saturday / Dim ar ddydd Sadwrn * Please note: Alternative services via Chester are shown in this timetable when they offer a significant benefit to the traveller * Sylwer: Dangosir gwasanaethau drwy Gaer yn yr amserlen hon pan fyddan nhw'n cynnig dewis amgen i'r teithiwr On public holidays, Arriva Trains Wales generally operate a Sunday Service (subject to any Network Rail engineering work). Yn gyffredinol, ar wyliau cyhoeddus, bydd Trenau Arriva Cymru yn gweithredu'r gwasanaeth a gynigir fel arfer ar ddydd Sul (yn amodol ar unrhyw waith peirianyddol gan Network Rail).

Monday to Saturday

Dydd Llun i Sadwrn

Service Number/Rhif Gwasanaeth		BHX		BHX		BHX		BHX		BHX		BHX				
Canolog Wrexham Central	-	0728	0830	0930	1030	1130	1230	1330	1430	1530	1630	1743	1944	-	2155	
Shrewsbury d	0520	0610	0724	0821	0924	1023	1125	1225	1325	1425	1526	1624	1909	2139	2024	
Cyffredinol Wrexham General d	0631	0730	0832	0932	1032	1132	1232	1332	1432	1532	1632	1745	1948	-	2157	
Gwersyllt	0635	0734	0836	0936	1036	1136	1236	1336	1436	1536	1636	1749	1950	-	2201	
Cefn-y-Bedd	0640	0739	0841	0941	1041	1141	1241	1341	1441	1541	1641	1754	1955	-	2206	
Caergwrle	0642	0741	0843	0943	1043	1143	1243	1343	1443	1543	1643	1756	1957	-	2208	
Yr Hob/Hope	0644	0743	0845	0945	1045	1145	1245	1345	1445	1545	1645	1758	1959	-	2210	
Penyffordd	0648	0747	0849	0949	1049	1149	1249	1349	1449	1549	1649	1802	2003	-	2214	
Buckley	0651	0750	0852	0952	1052	1152	1252	1352	1452	1552	1652	1805	2006	-	2217	
Penarlôg/Hawarden	0655	0754	0856	0956	1056	1156	1256	1356	1456	1556	1656	1809	2010	-	2221	
Shotton High Level a	0659	0758	0900	1000	1100	1200	1300	1400	1500	1600	1700	1813	2014	-	2225	
Rhyl a	0753	0829	0957	1007	1229	-	1330	1529	1629	1728	1759	1858	2108	-	2330	
Rhyl d	0626	0715	0813	0913	1013	1112	1212	1312	-	1536	1536	1733	1912	-	2147	
Shotton High Level d	0659	0759	0900	1000	1100	1200	1300	1400	1500	1600	1700	1813	2014	-	2225	
Shotton Low Level d	-	-	-	-	-	-	-	-	-	-	-	-	2136	2304	-	
Hawarden Bridge/Pont Penarlôg	0701x	0801x	-	-	-	-	-	-	-	-	-	1702x	-	-	-	
Neston	0710	0810	0910	1010	1110	1210	1310	1410	1510	1610	1711	1823	2024	-	2235	
Heswall	0715	0815	0915	1015	1115	1215	1315	1415	1515	1615	1716	1828	2029	-	2240	
Upton	0721	0821	0921	1021	1121	1221	1321	1421	1521	1621	1722	1834	2035	-	2246	
Bidston	0730	0830	0931	1030	1130	1230	1330	1430	1530	1630	1731	1845	2044	-	2255	
Liverpool James Street	0749	0849	0949	1049	1149	1249	1349	1449	1549	1649	1749	1904	2129	-	2329	
Liverpool Central/Canolog Lerpwl	0755	0855	0955	1055	1155	1255	1355	1455	1555	1655	1755	1910	2135	-	2335	

BHX - Train does not run on Bank Holidays/Nid yw'r gwasanaeth yn gweithredu ar Wyliau Cyhoeddus **c** - Connection times vary/Gall amseroedd cysylltiadau amrywio **d** - Departure time/Amser gadel **a** - Arrival time/Amser cyrraedd **x** - Stops on request/Bydd y tren yn galw ar gais unig **SX** - Except Saturday / Dim ar ddydd Sadwrn * Please note: Alternative services via Chester are shown in this timetable when they offer a significant benefit to the traveller * Sylwer: Dangosir gwasanaethau drwy Gaer yn yr amserlen hon pan fyddan nhw'n cynnig dewis amgen i'r teithiwr On public holidays, Arriva Trains Wales generally operate a Sunday Service (subject to any Network Rail engineering work). Yn gyffredinol, ar wyliau cyhoeddus, bydd Trenau Arriva Cymru yn gweithredu'r gwasanaeth a gynigir fel arfer ar ddydd Sul (yn amodol ar unrhyw waith peirianyddol gan Network Rail).

Sundays and Bank Holidays*

Dydd Sul a Gwyliau Cyhoeddus*

Service Number/Rhif Gwasanaeth						
Liverpool Central/Canolog Lerpwl	0935	1205	1435	1705	1935	2205
James Street	0937	1207	1437	1707	1937	2207
Bidston	0957	1227	1457	1727	1957	2227
Upton	0958	1228	1458	1728	1958	2228
Heswall	1005	1235	1505	1735	2005	2235
Neston	1010	1240	1510	1740	2010	2240
Hawarden Bridge/Pont Penarlâg	1019	1249	1519	1749	2019	2249
Shotton Low Level d	-	-	-	-	-	-
Shotton High Level a	1021	1251	1521	1751	2021	2251
Rhyl a	-	1336	1636	1903	-	2334
Rhyl d	0908	1141	-	1654	1943	2156
Shotton High Level d	1021	1251	1521	1751	2021	2251
Penarlâg/Hawarden	1026	1256	1526	1756	2026	2256
Bwcle/Buckley	1031	1301	1531	1801	2031	2301
Penyffordd	1034	1304	1534	1804	2034	2304
Yr Hob/Hope	1038	1308	1538	1808	2038	2308
Caergwrle	1040	1310	1540	1810	2040	2310
Cefn-y-Bedd	1042	1312	1542	1812	2042	2312
Gwersyllt	1046	1316	1546	1816	2046	2316
Cyffredinol Wrexham General a	1051	1323	1553	1823	2053	2326
Shrewsbury a	1227	1427	-	1920	2222	-
Canolog Wrexham Central	1059	1329	1559	1829	2059	-

BHX - Train does not run on Bank Holidays/Nid yw'r gwasanaeth yn gweithredu ar Wyliau Cyhoeddus **c** - Connection times vary/Gall amseroedd cysylltiadau amrywio **d** - Departure time/Amser gadel **a** - Arrival time/Amser cyrraedd **x** - Stops on request/Bydd y tren yn galw ar gais unig **SX** - Except Saturday / Dim ar ddydd Sadwrn * Please note: Alternative services via Chester are shown in this timetable when they offer a significant benefit to the traveller * Sylwer: Dangosir gwasanaethau drwy Gaer yn yr amserlen hon pan fyddan nhw'n cynnig dewis amgen i'r teithiwr On public holidays, Arriva Trains Wales generally operate a Sunday Service (subject to any Network Rail engineering work). Yn gyffredinol, ar wyliau cyhoeddus, bydd Trenau Arriva Cymru yn gweithredu'r gwasanaeth a gynigir fel arfer ar ddydd Sul (yn amodol ar unrhyw waith peirianyddol gan Network Rail).

Monday to Saturday (except Bank Holidays)

Dydd Llun i Sadwrn (heblaw Gwyliau Cyhoeddus)

Service Number/Rhif Gwasanaeth						
Canolog Wrexham Central	-	1111	1341	1611	1841	2110
Shrewsbury d	-	1016	1217	1522	1730	2022
Cyffredinol Wrexham General d	0844	1114	1344	1614	1844	2113
Gwersyllt	0848	1118	1348	1618	1848	2117
Cefn-y-Bedd	0853	1123	1353	1623	1853	2122
Caergwre	0855	1125	1355	1625	1855	2124
Yr Hôb/Hope	0857	1127	1357	1627	1857	2126
Penyffordd	0901	1131	1401	1631	1901	2130
Buckley	0904	1134	1404	1634	1904	2133
Penarlâg/Hawarden	0908	1138	1408	1638	1908	2137
Shotton High Level a	0912	1142	1412	1642	1912	2141
Rhyl a	1022	1237	1536	1736	2012	2234
Rhyl d	-	-	-	1545	-	2256
Shotton High Level d	0912	1142	1412	1642	1912	2141
Shotton Low Level d	-	-	-	-	-	-
Hawarden Bridge/Pont Penarlâg	0914	1114	1414	1644	1914	2143
Neston	0923	1153	1423	1653	1923	2152
Heswall	0928	1158	1428	1658	1928	2157
Upton	0934	1204	1434	1704	1934	2203
Bidston	0942	1212	1442	1713	1943	2212
Liverpool James Street	1029	1259	1529	1759	2029	2259
Liverpool Central/Canolog Lerpwl	1035	1305	1535	1805	2035	2305



BHX - Train does not run on Bank Holidays/Nid yw'r gwasanaeth yn gweithredu ar Wyliau Cyhoeddus **c** - Connection times vary/Gall amseroedd cysylltiadau amrywio **d** - Departure time/Amser gadel **a** - Arrival time/Amser cyrraedd **x** - Stops on request/Bydd y tren yn galw ar gais unig **SX** - Except Saturday / Dim ar ddydd Sadwrn * Please note: Alternative services via Chester are shown in this timetable when they offer a significant benefit to the traveller * Sylwer: Dangosir gwasanaethau drwy Gaer yn yr amserlen hon pan fyddan nhw'n cynnig dewis amgen i'r teithiwr On public holidays, Arriva Trains Wales generally operate a Sunday Service (subject to any Network Rail engineering work). Yn gyffredinol, ar wyliau cyhoeddus, bydd Trenau Arriva Cymru yn gweithredu'r gwasanaeth a gynigir fel arfer ar ddydd Sul (yn amodol ar unrhyw waith peirianyddol gan Network Rail).

Borderlands Line

Your railway, your daily life

From Bidston to Wrexham, for work, shopping or just great days out, the Borderlands Line will take you there.

Investing in infrastructure to keep you moving

Normal services resume on June 19th



Shopping



Bike & Go at Bidston



Explore Wales



Travel to work



Relax and unwind



Family days out

Find out more and plan your train journey at www.borderlandsline.com



Wrexham • Bidston • Liverpool
Wrecsam • Bidston • Lerpwl

Lein y Gororau

Eich rheilfordd, eich bywyd bob dydd

O Bidston i Wrecsam, ar gyfer gwaith, siopa neu ddiwrnod allan gwych, aiff Lein y Gororau â chi yno.

**Buddsoddi mewn
seilwaith i'ch
symud o le i le**

**Gwasanaethau
Normal Ail-ddechrau
19 Mehefin**



Siopa



Beicio a Mynd yn Bidston



Archwillo Cymru



Teithio i'r gwaith



Ymlacio a dadflino



Diwrnodau allan i'r teulu

Gallwch ganfod mwy a chynllunio'ch siwrnai ar wefan
www.borderlandsline.com



BUS SERVICE OPERATORS / GWEITHREDWYR GWASANAETHAU BYSIAU

ARRIVA

Manor Lane Ind. Est.,
Hawarden / Penarlag, CH5 3QY
Tel. (01244) 536642

Ffynnongroew Road,
Rhyl / Y Rhyl, LL18 1DB
Tel. (01745) 343492

Berse Road,
Wrexham / Wrecsam, LL11 6SL
Tel: (01978) 756883

H.D.Hutchinson

Newlyn, Padeswood Road,
Buckley, Flintshire CH7 2JW
Tel: (01244) 543907

JONES MOTORS

Chester Rd
Flint, CH6 5DZ
Tel: (01352) 733292

LLEW JONES

Station Yard, Station Road,
Llanrwst, Conwy LL26 0EH
Tel: (01492) 640320

P & O LLOYD

Rhydwen Garage, Bagillt,
Holywell / Treffynnon, CH6 6JJ
Tel: (01352) 710682

R WILLIAMS

22 Holywell Road, Flint CH6 5ES
Tel: (01352) 731111

STAGECOACH

The Pebbles, Liverpool Road,
Chester / Caer, CH2 1AE
Tel: (01244) 381461

TOWNLYNX

Unit 72,
Greenfield Business Park 2,
Holywell / Treffynnon,
CH8 7GJ
Tel: (01352) 715757

 **traveline**
.cymru
Rhadffôn
Freephone **0800 464 00 00**



dwi'n bwriadu mynd ymhell
I bobl ifanc 16-18 oed sy'n ♡ teithiau rhatach
i'm going places
for 16-18 year olds who ♡ cheaper travel

GWYBODA CHYB I'W AWRI!
llw.cymru/fyngherdynteithio

APPLY NOW!
gov.wales/mytravelpass

 **Travel Pass**
Cymru
Wales